

Kidde ADS

Combined Cylinder Strap for 225-lb. and 395-lb. Systems

P/N: 90-23612X-001

FEATURES

- Available in Two Sizes for 225-lb. and 395-lb. Systems
- Convenience of One Strap for Two Cylinders
- Easily Installed
- Custom fit for the ADS
- SAE 1020 Steel
- UL Listed
- FM Approved

DESCRIPTION

Kidde ADS Combined Cylinder Strap offers the convenience of one strap installation for a two cylinder system. Custom made for use with the Kidde ADS, the strap is available in two sizes: one is custom fit for a 225-lb. tank and nitrogen driver cylinder, and one for the 395-lb. tank and nitrogen driver cylinder. Made of high quality steel, the strap is durable enough to withstand typical installation environments and is designed for easy, secure installation.

INSTALLATION

The agent cylinder and nitrogen driver cylinders are secured in place using the combined cylinder strap. The strap is bolted to a solid wall or a strut assembly in three locations: left, right and center. Use 1/2-inch threaded rod and/or 1/2-inch diameter nuts, bolts and washers to secure the mounting strap to a vertical surface. After the containers are securely mounted, they can then be connected to the discharge piping per the system drawings.

SPECIFICATIONS

MATERIALS

Body: SAE 1020 Steel
Finish: Black
Approx. Weight:
225-lb. Strap: 4.4 lb. (2.0 kg)
395-lb. Strap: 5.6 lb. (2.5 kg)



ORDERING INFORMATION

Part Number	Description
06-236126-001	Cylinder Strap for use with the 395-lb. ADS Cylinder and 4070 cu. in. Nitrogen Driver Set
06-236127-001	Cylinder Strap for use with the 225-lb. ADS Cylinder and 2300 cu. in. Nitrogen Driver Set

DIMENSIONS

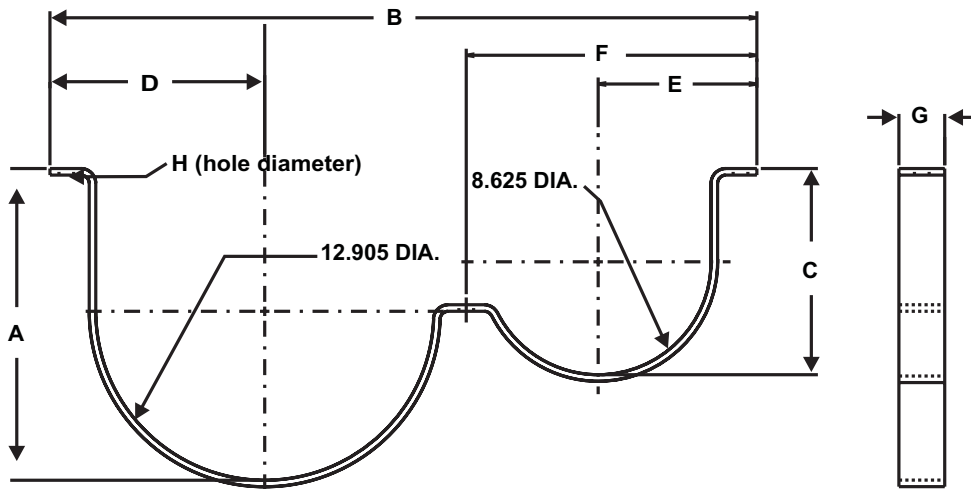


Figure 1. Dimensions for 225-lb. System (P/N 06-236127-001, See Table 1)

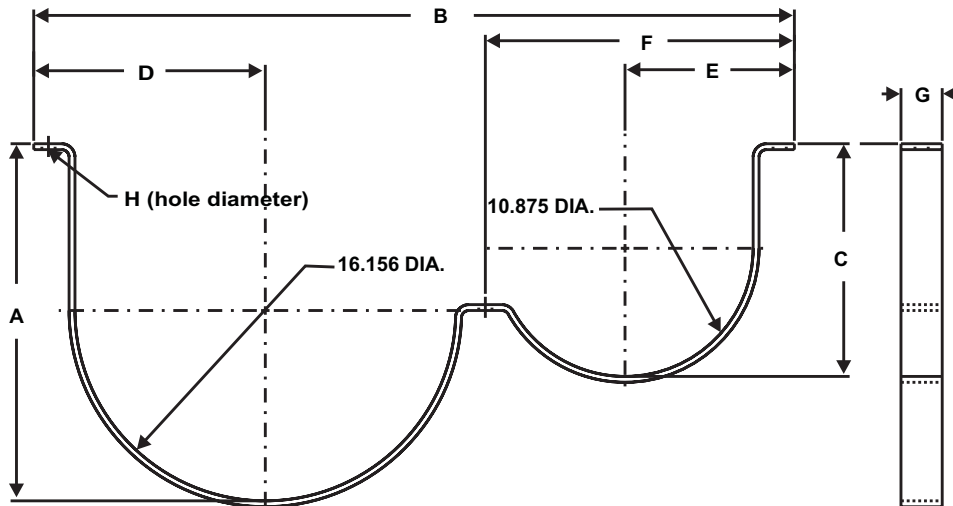


Figure 2. Dimensions for 395-lb. System (P/N 06-236126-001, See Table 1)

Table 1. Bracket Dimensions

Part Number	Cylinder Size	A		B		C		D		E		F		G		H	
		in.	mm	in.	mm	in.	mm	in.	mm	in.	mm	in.	mm	in.	mm	in.	mm
06-236127-001	225 lb.	11.91	303	27.00	686	7.88	200	8.20	208	6.06	154	11.10	282	1.75	44	0.562	14
06-236126-001	395 lb.	14.00	356	32.28	820	8.72	221	9.83	250	7.19	183	13.12	333	1.75	44	0.562	14

This literature is provided for informational purposes only. KIDDE-FENWAL, INC. assumes no responsibility for the product's suitability for a particular application. The product must be properly applied to work correctly. If you need more information on this product, or if you have a particular problem or question, contact KIDDE-FENWAL, INC., Ashland, MA 01721. Telephone: (508) 881-2000.