

Kidde® In-Cabinet™

Cylinder Bracket,
P/N 06-220037-00X

 Kidde Fire Systems

Effective: September 2004
K-90-3002

FEATURES

- *UL Listed*
- *Tested to UL 2166*
- *Tee Bolt Quick-Release Clip*
- *Designed Custom Fit to Ensure Proper Horizontal or Vertical Mount Alignment*
- *Corrosion Resistant*
- *Durable Construction; Made of Stainless Steel and SAE 1020 Steel*

DESCRIPTION

Kidde Fire Systems, tee bolt quick-release Cylinder Bracket is Listed by the Underwriters Laboratory, Inc. (UL) and designed specifically for use with the Kidde In-Cabinet/Small Enclosure Systems. The tee bolt, quick release strap is offered in three (3) sizes to accommodate all the In-Cabinet/Small Enclosure cylinder and valve assembly offerings. The strap is made of high quality steel, and is durable enough to withstand the typical industrial, installation environments. In addition, the bracket will accommodate the cylinder if it is installed in a horizontal or vertical position. The cylinder valve fits only one-way into the bracket, such that the siphon tube in the cylinder is oriented correctly to achieve proper agent flow.

INSTALLATION

Simply mount the bracket to a wall or structure that is strong enough to support the cylinder during a discharge event. Once it is mounted, the cylinder can be strapped into place using the tee bolt clip on the strap. If needed, once the strap has been secured, the adjusting nut can be tightened to further secure the cylinder in place.

WARNING

Always ensure that the safety cap is on the cylinder when strapping the cylinder in place or before removing cylinder from the strap. Failure to comply with this warning could result in injury to personnel or property damage.

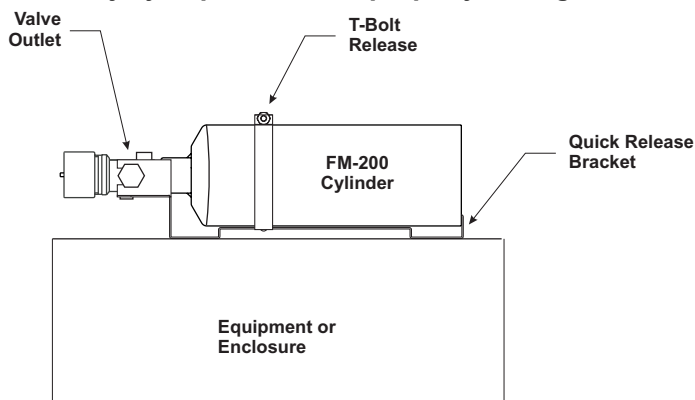


Figure 1. Horizontal Installation

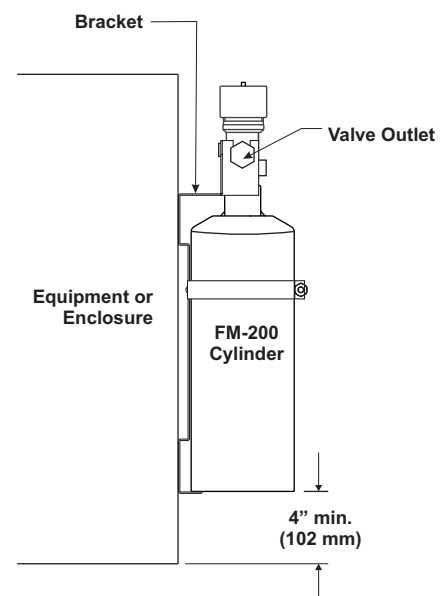
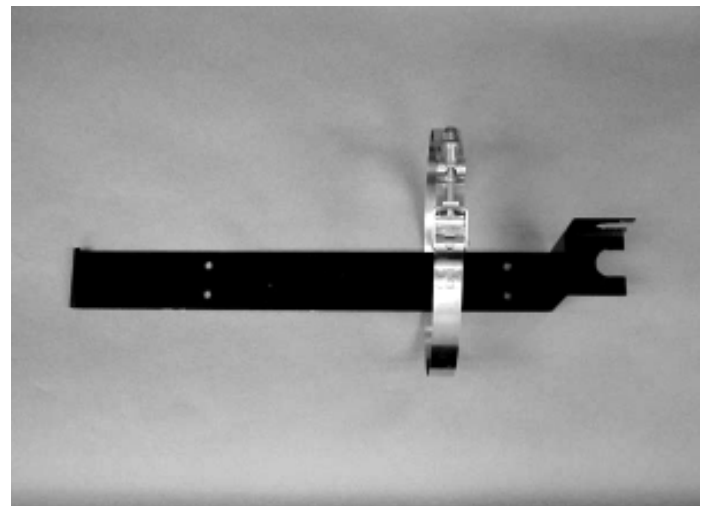


Figure 2. Vertical Installation

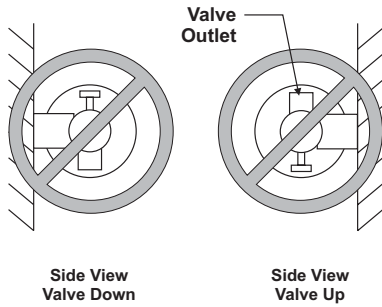


Figure 3. Incorrect Installation

SPECIFICATIONS

- Body: SAE 1020 Steel
- Strap: Stainless Steel
- Finish:
 - Body: Black
 - Strap: Stainless Steel, No Finish
- Approximate Weight:
 - 0.85 lb. (0.39 kg), P/N 06-220037-001
 - 1.05 lb. (0.48 kg), P/N 06-220037-002
 - 2.31 lb. (1.05 kg), P/N 06-220037-003

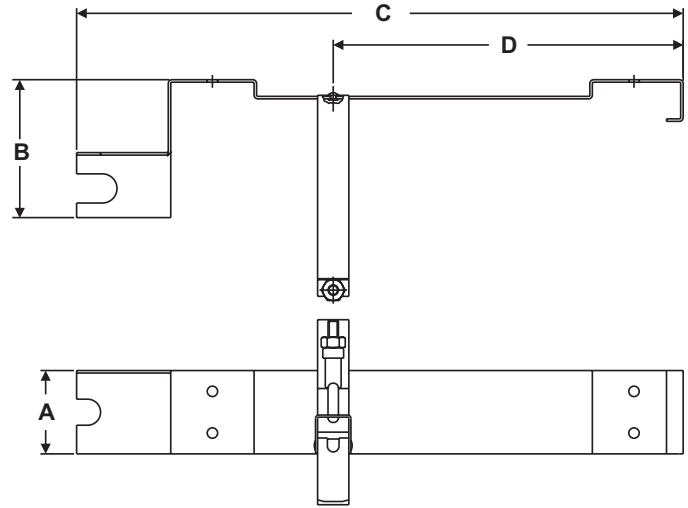


Figure 4. Cylinder Bracket Specifications

Table 1. Cylinder Bracket Specifications

Part Number	A	B	C	D
06-220037-001	2.00 in. (51 mm)	3.31 in. (84 mm)	14.56 in. (370 mm)	8.40 in. (213 mm)
06-220037-002	2.00 in. (51 mm)	4.73 in. (120 mm)	17.88 in. (454 mm)	10.00 in. (254 mm)
06-220037-003	2.00 in. (51 mm)	4.73 in. (120 mm)	32.95 in. (837 mm)	12.00 in. (305 mm)

ORDERING INFORMATION

Part Number	Description
06-220037-001	Quick Release Cylinder Strap for use with 145 cu. in. Cylinder and Valve Assembly
06-220037-002	Quick Release Cylinder Strap for use with 500 cu. in. Cylinder and Valve Assembly
06-220037-003	Quick Release Cylinder Strap for use with 750 cu. in. Cylinder and Valve Assembly

Kidde is a registered trademark of Kidde-Fenwal, Inc.
 In-Cabinet is a trademark of Kidde-Fenwal, Inc.
 FM-200 is a registered trademark of Great Lakes Chemical Corporation.
 All other trademarks are property of their respective owners.

This literature is provided for informational purposes only. KIDDE-FENWAL, INC. assumes no responsibility for the product's suitability for a particular application. The product must be properly applied to work correctly. If you need more information on this product, or if you have a particular problem or question, contact KIDDE-FENWAL INC., Ashland, MA 01721. Telephone: (508) 881-2000

