

FUJIFILM X70 SPECIFICATIONS

Black: F X70-B / Silver: F X70-S

Model name	FUJIFILM X70	
Number of effective pixels	16.3 million pixels	
Image sensor	23.6mm × 15.6mm (APS-C) X-Trans CMOS II with primary color filter Total number of pixels: 16.7 million pixels	
Storage media	SD memory card / SDHC memory card / SDXC (UHS-I) memory card ^{*1}	
File format	Still image	JPEG (Exif Ver 2.3) ^{**} , RAW (RAF format), RAW+JPEG (Design rule for Camera File system compliant / DPOF-compatible)
	Movie	MOV (H.264, Audio: Linear PCM / stereo sound)
Number of recorded pixels	L :	(3:2) 4896 × 3264 / (16:9) 4896 × 2760 / (1:1) 3264 × 3264
	M :	(3:2) 3456 × 2304 / (16:9) 3456 × 1944 / (1:1) 2304 × 2304
	S :	(3:2) 2496 × 1664 / (16:9) 2496 × 1408 / (1:1) 1664 × 1664 <Motion Panorama> 180° Vertical : 2160 × 9600 Horizontal : 9600 × 1440 120° Vertical : 2160 × 6400 Horizontal : 6400 × 1440
Lens	Name	FUJINON single focal length lens
	Focal length	f=18.5mm (35mm format equivalent : 28mm)
	Full-aperture	F2.8
	Constitution	5 groups 7 lenses (2 aspherical glass molded lens included)
Aperture	F2.8 - F16 1/3EV step (controlled with 9-blade aperture diaphragm)	
Focus distance	Approx. 10cm to infinity / 3.9in. to infinity	
Sensitivity	Standard output	AUTO (Control available up to ISO 6400) Equivalent to ISO 200 - 6400
	Extended output	Equivalent ISO 100, 12800, 25600 and 51200
Exposure control	TTL 256-zone metering, Multi / Spot / Average	
Exposure mode	Programmed AE / Shutter Speed priority AE / Aperture priority AE / Manual exposure	
Exposure compensation	-3.0EV - +3.0EV, 1/3EV step (movie recording : -2.0EV - +2.0EV)	
Face detection	Yes	
Shutter speed	(Electronic Shutter mode) 1sec. to 1/3200sec. ^{**} , (P mode) 4sec. to 1/4000sec., (All other modes) 30sec. to 1/4000sec., Time 30sec. to 1/4000sec., Bulb (max.60min.)	
	Continuous shooting	
	Approx. 8.0fps (JPEG : max. approx. 10 frames) Approx. 3.0fps (JPEG : up to the capacity of the card) [*] Recordable frame number may vary depending on the type of memory card used. [*] The frame rate varies with shooting condition and the number of images recorded.	
	Auto bracketing	
AE Bracketing (±1/3EV, ±2/3EV, ±1EV) Film Simulation Bracketing (Any 3 types of film simulation selectable) Dynamic Range Bracketing (100%, 200%, 400%) ISO sensitivity Bracketing (±1/3EV, ±2/3EV, ±1EV) White Balance Bracketing (±1, ±2, ±3)		
Focus	Mode	Single AF / Continuous AF / MF
	Type	Intelligent Hybrid AF (TTL contrast AF / TTL phase detection AF), AF assist illuminator available
AF frame selection	Single Point AF :	49 areas on a 7×7 grid (Changeable size of AF frame among 5 types), Zone AF : Selectable with 3×3 / 5×3 / 5×5 areas from 77 areas on an 11×7 grid, Wide/Tracking AF : Automatic selection from 77 areas on an 11×7 grid
	Automatic scene recognition / Custom / Color temperature selection (K) / Preset :	Fine, Shade, Fluorescent light (Daylight), Fluorescent light (Warm White), Fluorescent light (Cool White), Incandescent light, Underwater
White balance		
Self-timer	10sec. / 2sec. delay	
Interval timer shooting	Yes Setting: Interval, Number of shots, Starting time	
Flash	Auto flash (Super Intelligent Flash)	
	Effective range: (ISO 1600) approx. 30cm - 7.9m/1.0ft. - 25.9ft. Guide Number: approx. 5.5 (ISO100-m)	
	Flash modes	
Flash modes	Red-eye Removal OFF	Auto / Forced Flash / Slow Synchro / Suppressed Flash / Commander
	Red-eye Removal ON	Red-eye Reduction Auto / Red-eye Reduction & Forced Flash / Red-eye Reduction & Slow Synchro / Suppressed Flash / Commander [*] Red-eye removal is active when Face Detection is set to ON.

Hot shoe	Yes (Dedicated TTL Flash compatible)	
LCD monitor	3.0-inch, aspect ratio 3:2, approx. 1,040K-dot Tilt-type TFT color LCD monitor (approx. 100% coverage)	
	Movie recording	
Full HD (1920 × 1080) 60p / 50p / 30p / 25p / 24p, Continuous recording : up to approx. 14min. HD (1280 × 720) 60p / 50p / 30p / 25p / 24p, Continuous recording : up to approx. 27min. [*] Use a card with SD Speed Class with CLASSIC or higher		
Photography functions	Advanced SR AUTO, Eye detection AF, Face Detection, Interval timer shooting, Auto Red-eye Removal, Select custom setting, Motion panorama, Color space, Setting (Color, Sharpness, D-range, Gradation), Film Simulation, Advanced Filter, Framing guideline, Frame No. memory, Histogram display, Preview depth of focus, Lens Modulation Optimizer, Pre-AF, Control ring setting, Focus check, Focus Peak Highlight, Digital Split Image ^{TM**} , Electronic level, Multiple exposure, Release priority / Focus priority selection, Fn button setting (RAW, Movie, etc.), ISO AUTO control, Instant AF setting (AF-S / AF-C), Interlock spot AE & Focus area, Focus area setting, AE-L / AF-L button setting, Edit / Save quick menu, Preview exp. / WB in manual mode, Shutter type, Touch screen setting	
	Touch screen mode	Shooting Mode: Touch shooting, Focus area, OFF Display Mode: Swipe, Zoom, Pinch-in / Pinch-Out, Double-tap, Drag
Digital Tele-converter	28mm (Nomal), 35mm, 50mm *35mm format equivalent	
Film Simulation mode	PROVIA/STANDARD, Velvia/VIVID, ASTIA/SOFT, CLASSIC CHROME, PRO Neg Hi, PRO Neg. Std, MONOCHROME, MONOCHROME+Ye FILTER, MONOCHROME+R FILTER, MONOCHROME+G FILTER, SEPIA	
Dynamic range setting	AUTO, 100%, 200%, 400%	
Advanced filter	Toy camera / Miniature / Pop color / High-key / Low-key / Dynamic tone / Soft focus / Partial color (Red / Orange / Yellow / Green / Blue / Purple)	
Playback functions	RAW conversion, Image rotate, Auto image rotate, Face Detection, Red-eye reduction, Photobook assist, Erase selected frames, Image search, Multi-frame playback (with micro thumbnail), Slide show, Protect, Crop, Resize, Panorama, Favorites	
Wireless transmitter	Standard	IEEE 802.11b/g/n (standard wireless protocol)
	Access mode	Infrastructure
Wireless function	Geotagging, Wireless communication (Image transfer), View & Obtain Images, Remote camera shooting, PC Autosave, instax printer print	
Other functions	PictBridge, Exif Print, 35 Languages, Date / Time, Time difference, Sound & Flash OFF, High Performance, Preview exp. in Manual mode, LCD Brightness, LCD Color, Preview Pic. Effect, DISP. Custom Setting	
	Terminal	Digital interface: USB2.0 (High-Speed) / micro USB terminal *connectable with Remote Release RR-90 (sold separately) HDMI output: HDMI Micro connector (Type D)
Power supply	NP-95 Li-ion battery (included)	
Dimensions	112.5mm (W) × 64.4mm (H) × 44.4mm (D) / 4.43in. (W) × 2.54in. (H) × 1.75in. (D) (Minimum Depth : 25.9mm / 1.02in.)	
Weight	Approx. 340g / 12.0oz. (including battery and memory card) Approx. 302g / 10.6oz. (excluding accessories, battery and memory card)	
	Operating temperature	0°C - 40°C (+32°F - +104°F)
Operating humidity	10% - 80% (no condensation)	
Battery life for still images	Approx. 330 frames ^{**}	
Battery life for movies	Consecutive movie recording : approx. 86min. (Face detection is set to OFF) [*] Individual movies cannot exceed approx. 14min. on Full HD mode, and approx. 27min. on HD mode in length.	
Starting up period	Approx. 0.5sec., when High Performance mode set to ON Approx. 1.0sec., when High Performance mode set to OFF	
	Accessories included	Li-ion battery NP-95, AC power adapter AC-5VF, Plug Adapter, Shoulder strap, Lens cap, Metal strap clip, Protective cover, Clip attaching tool, USB cable, Owner's manual

^{*1} Please see the Fujifilm website to check memory card compatibility.
^{*2} Exif 2.3 is a digital camera file format that contains a variety of shooting information for optimal printing.
^{*3} The Electronic Shutter may not be suitable for fast-moving objects. Flash can not be used.
^{*4} Digital Split Image is a trademark or a registered trademark of FUJIFILM Corporation.
^{*5} Approximate number of frames / period that can be taken with a fully-charged battery based on CIPA standard.

FUJIFILM
Value from Innovation

X70



<http://fujifilm-x.com/x70/>

To ensure correct usage, read owner's manual carefully before using your equipment.
 All photos, illustrations, drawings and other images in this brochure are intended for illustrative purposes only.
 DXC logo is a trademark. All other trademarks are the property of their respective holders.
 SILKPIX® is a registered trademark of Ichikawa Soft Laboratory Co., Ltd. in Japan.



Specifications are subject to change without notice

For more information, please visit our website
http://www.fujifilm.com/products/digital_cameras/index.html

FUJIFILM
FUJIFILM Corporation

©2016 FUJIFILM Corporation

THE ULTIMATE COMPACT X STREET PHOTOGRAPHY



1/100sec. F8.0 ISO400

**FEATURING A 28mm*1 EQUIVALENT WIDE-ANGLE LENS:
THE X70 PREMIUM COMPACT CAMERA FOR EVERYDAY USE**

Wide angle of view, compact size, X-Trans™*2 image quality, superb response, stunning style. The X70 with its 18.5mm wide-angle lens is all you need to make your everyday shots dramatic.

FUJIFILM X70



*1 35mm format equivalent. *2 X-Trans is a trademark or registered trademark of FUJIFILM Corporation.



1/20sec. F2.8 ISO1600



1/60sec. F2.8 ISO1250

LENS

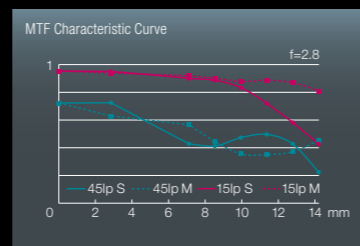
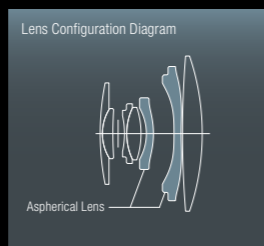
18.5mm F2.8 LENS HELPS YOU MAKE THE MOST OF EVERY SITUATION

The X70 features a 18.5mm F2.8 wide-angle fixed lens capable of covering everything from snapshots to landscapes. Using technologies developed in the X100 series, the newly-designed FUJINON lens is optimized for the 16.3-megapixel APS-C sized X-Trans™ CMOS II sensor and produces outstanding detail and sharpness.



NEW COMPACT, HIGH-PERFORMANCE LENS

The new lens, specifically developed for the X70, has an optical construction of seven elements in five groups, including two aspherical lenses to correct distortion. Furthermore, the wide aperture lens combines with the sensor to deliver an impressive level of detail with even light distribution across the entire frame.



SENSOR / PROCESSOR

X-TRANS CMOS II

SENSOR

Despite its compact, lightweight body, the X70 features a 16.3-megapixel APS-C sized sensor. Thanks to its unique color filter array, moiré and false colors are tightly controlled without the need for an optical low-pass filter (OLPF). Coupled with the high-performance image processing engine, the camera delivers excellent sharpness, rich gradation and low noise.



EXR Processor II

PROCESSOR

With its high-speed image processing engine, the X70's faster start-up time and shooting interval are achieved. The camera is also capable of shooting at ISO 51200 thanks to highly precise noise reduction, allowing for handheld shooting even in low light conditions.

START-UP TIME	SHOOTING INTERVAL
0.5sec. ^{*1}	0.5sec. ^{*2}
SHUTTER TIME LAG	MAXIMUM SENSITIVITY
0.01sec.	ISO51200 ^{*3}

* X-Trans is a trademark or registered trademark of FUJIFILM Corporation.

^{*1} In High-Performance Mode. ^{*2} MF Mode. ^{*3} Extended output sensitivity.



1/60sec. F4.0 ISO1600



1/2000sec. F5.6 ISO800

CONTROL

EXPOSURE CONTROL USING DIALS AND AN APERTURE RING

Based around the trademark X-Series operating system, the small and lightweight X70 offers intuitive operation with at-a-glance checking of important exposure settings. The lens features an aperture ring, while shutter speeds and exposure compensation are controlled by dials on the top-plate. Apertures can be changed in 1/3 or 1 stop increments for precise control, while the dials are milled from aluminium for ease of use and a comfortable feel.



Aperture Ring



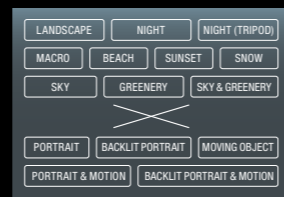
Shutter Speed Dial / Exposure Compensation Dial

AUTO MODE SELECTOR LEVER

Selecting AUTO on the top-plate Auto Mode Selector Lever switches the X70 to Advanced SR Auto, where it automatically selects the optimal settings according to the scene. This delivers instant high-quality results with settings chosen based on 54 pre-programmed scenes.



Auto Mode Selector Lever



Auto Detection Scene Combination

AUTOFOCUS

HIGH-SPEED / HIGH-PRECISION, SIX TYPES OF AF MODES

The X70 features Intelligent Hybrid AF, which automatically switches between Phase Detection AF (best for speed) and Contrast AF (best for low light). The phase detection pixels in the center of the image sensor deliver autofocusing speeds as short as 0.1sec*. Six AF modes, including Zone and Wide/Tracking for moving subjects, will ensure you capture the subject, whatever the conditions.

FASTEST AF
0.1sec.*

CONTINUOUS SHOOTING SPEED
8.0fps (HIGH-SPEED MODE) 3.0fps (LOW-SPEED MODE)



AF-S + SINGLE POINT
High-precision AF



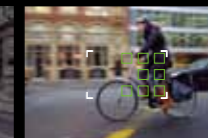
AF-S + ZONE
For capturing movement over a wide area



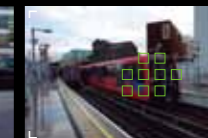
AF-S + WIDE/TRACKING
Perfect for capturing unpredictable motion



AF-C + SINGLE POINT
Optimized for linear movements backwards and forwards



AF-C + ZONE
For tracking movement handheld



AF-C + WIDE/TRACKING
For tracking a subject moving erratically over a wide area in the frame

AUTO MACRO FOR CLOSE-UP SHOTS

Automatically switch to an AF mode optimized for close-up photography. Minimum working distance: 10cm.



FACE DETECTION + EYE DETECTION AF

Take professional-looking portraits with Face Detection and Eye Detection AF, which focuses accurately on the eye.



* Fujifilm research based on CIPA guidelines in High-Performance mode as of January, 2016.



1/140sec. F5.6 ISO200



1/8500sec. F2.8 ISO800

TILTING LCD SCREEN

SHOOT AT ANY ANGLE WITH THE 180 DEGREE TILTING LCD SCREEN

A 3.0-inch 1.04M-dot 180 degree tilting LCD screen allows users to shoot from a wide variety of angles, such as low angles and high angles, and flipping the screen 180 degree upwards is perfect for selfies. The X70's wide-angle lens is ideal for high-quality self-portraits that include your surroundings too.



High Angle

Low Angle

Selfie



TOUCHSCREEN

ENJOY SIMPLE PLAYBACK AND SHOOTING WITH THE FIRST TOUCHSCREEN ON AN X-SERIES CAMERA

The X70 is the first X-Series model to feature touchscreen control. When shooting, the touchscreen allows users to select a focus area and use Touch Shot to take a picture quickly. During playback, smartphone-style gestures can be used, including swipe, drag, pinch-zoom and double tap enlargement, offering a different experience to viewing images using buttons.



Focus on the right front of the subject with normal AF

Focus on the back-left of the subject with Touch Shot





1/125sec. F5.6 ISO800 PROVIA

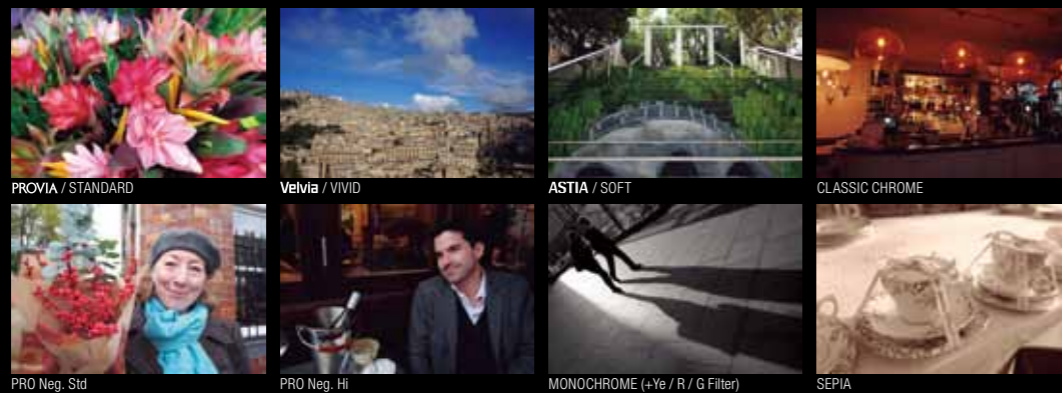


1/160sec. F2.8 ISO400

FILM SIMULATION

28mm × FUJIFILM COLORS FILM SIMULATION MODES ENCAPSULATE FUJIFILM'S PASSION AND FILM MAKING HERITAGE

Film Simulation uses color reproduction technology perfected through more than 80 years of film manufacturing. Users can select from 11 different modes, just like choosing a roll of film, so they can get precisely the right color reproduction for their image. When shooting in RAW, users can apply their favorite Film Simulation in post-production using RAW conversion software.



DIGITAL TELE-CONVERTER

INTEGRAL DIGITAL TELE-CONVERTER OFFERS 35mm* and 50mm* EQUIVALENTS

When the digital tele-converter is activated, the lens is capable not only of shooting at the wide-angle 28mm* equivalent, but also 35mm* and 50mm* settings. The LCD screen alters according to the setting, so it's just like changing lenses - perfect when you want your subject larger in the frame. The lens's focusing ring becomes a control ring, except when using MF, allowing the user to speedily change the angle of view. The digital teleconverter can be used with main exposure modes including P (Program AE), S (Shutter Speed Priority AE), and A (Aperture Priority AE).



* 35mm format equivalent.



1/125sec. F5.6 ISO800 PARTIAL COLOR (YELLOW)



10sec. F11 ISO200

EFFECTS

ADVANCED FILTERS FOR UNIQUE SHOTS

Eight Advanced Filters can be used to easily create artistic photographs. Modes include Toy Camera for a retro look, Miniature for a miniature effect, Pop Color for emphasizing contrast and saturation, and Soft Focus for adding bokeh and a soft look to the shot. The filter effect can be previewed on the LCD monitor.



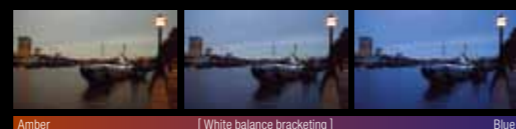
GET CREATIVE WITH MULTIPLE EXPOSURE

The X70 offers a Multiple Exposure mode for superimposing two images in one frame. The first frame is displayed while shooting the second, so you can get precisely the shot you are after.



VERSATILE AUTO BRACKETING FUNCTIONS

The X70 features five different auto bracketing functions, including AE, ISO sensitivity, Dynamic Range, Film Simulation and White Balance. One press of the shutter captures three different shots.



WIRELESS / INTERVAL

REMOTE SHOOTING FROM SMARTPHONES AND TABLETS

Remote shooting is possible using the free FUJIFILM Camera Remote app. This dedicated app means various settings, including exposure mode, white balance, timer and Touch AF can be operated from your smartphone or tablet. It's ideal when taking shots of special occasions or nature photos, plus it helps to prevent camera shake when shooting in low light conditions.



WIRELESS CONNECTIVITY TO INSTANTLY TRANSFER IMAGES

Using the FUJIFILM Camera Remote app, captured images can be sent to your smartphone or tablet without any ID or password. Images can be quickly shared or even uploaded to social networking sites. Images can also be sent to the SHARE-SP-1 (sold separately) for wireless printing.



INTERVAL SHOOTING FOR CONTINUOUS SHOTS

Shooting intervals can be set from one second to 24 hours for between 1 and 999 frames. The starting time can also be set. This offers far more creativity compared to a self-timer, allowing you to shoot the same point over an extended period to capture how a scene changes.





ACTUAL SIZE: W112.5mm×H64.4mm×D44.4mm / W4.43in×2.54in×1.75in (MINIMUM DEPTH: 25.9mm / 1.02in)



DESIGN DETAILS



Front

Back

Top



Compact and lightweight

Large handgrip

Luxurious appearance and texture

Features Super Intelligent Flash

ACCESSORIES

HALF LEATHER CASE

BLC-X70

Enhances the style and grip on the camera, while keeping it protected from scratches. Hand strap and cloth case included.



LENS HOOD

LH-X70 Black
LH-X70 Silver

Stylish hood cuts down reflections. Comes in black or silver to match the body.



EXTERNAL OPTICAL VIEWFINDER

VF-X21

Features 21mm* / 28mm* frame lines, and supports wide conversion lens.



WIDE CONVERSION LENS

(Available soon)
WCL-X70 Black
WCL-X70 Silver

Converts the fixed lens to a 21mm* equivalent without compromising optical performance. Available in black or silver.



* 35mm format equivalent.