



SmartLinx

Healthcare's First Medical Device Information System

SmartLinx MDIS® sets the new industry standard for applying medical device integration technology to help improve the delivery of patient care. It is a powerful, vendor-neutral data management solution that ties together the medical devices across your enterprise into a unified system that not only captures and distributes patient clinical data, but also makes available operational data about the devices themselves.

Through its three core components — connectivity, integration and analytics — SmartLinx consolidates clinical workflow and puts data to work by integrating it with intelligent systems beyond the EMR, like clinician decision support, alarm management, and asset management systems to drive informed clinical and operational decisions. Through its powerful surveillance and analytical tools, clinicians can more rapidly recognize the signs of potential patient physiological deterioration, while IT and clinical engineering can manage and monitor the enterprise-wide operational health and use of your medical devices.

DIRECT SALES CONTACTS

North America

CapsuleTech, Inc.
300 Brickstone Square, Suite 203
Andover, MA 01810 USA
Email: sales@capsuletech.com
Phone: 978-482-2300

Europe

CapsuleTech, SAS
9B Villa Pierre Ginier
75018, Paris, France
Email: northeurope@capsuletech.com
Email: southeurope@capsuletech.com
Email: centraleurope@capsuletech.com
Phone: (+33) 1 84 17 12 00

Asia-Pacific

CapsuleTech Asia Pacific PTE. LTD
80 Robinson Road
#02-00 Singapore 068898
Email: south-asia@capsuletech.com
Phone: (+65) 8258 9837

Capsule (China)

Email: north-asia@capsuletech.com
Phone: (+86) 186 2175 5367

CapsuleTech Australia PTY LTD

Unit 503 Floor 5
151 Castlereagh St
Sydney NSW 2000
Email: south-asia@capsuletech.com
Phone (+65) 8258 9837

Middle-East

Capsule
PO Box 73678 Office 207
Dune Building, 2nd December Street
Dubai - UAE
Email: mea@capsuletech.com
Phone: (+971) 50 703 1491

Latin America

Capsule
Rua Cayowaá, 571, Perdizes
CEP 05018-001
São Paulo – SP – BRAZIL
Email: south-america@capsuletech.com
Phone (Portuguese): (+55) (11) 3280 8656
Phone (Spanish): (+52) 55 8421 3486

Support

North America Hotline
Email: support@capsuletech.com
Phone: 800 260-9537

International Hotline

Email: emea.support@capsuletech.com

In North America
CapsuleTech, Inc.
300 Brickstone Square, Suite 203
Andover, MA 01810 USA
Phone: 978-482-2300
www.capsuletech.com

Outside North America
Capsule Technologie
9 Villa Pierre Ginier
75018, Paris, France
Phone: +33 1 5334 1400

SmartLinx Medical Device Information System and SmartLinx IQ are community trademarks of Capsule Technologie.

© 2015 Capsule Technologie
All rights reserved.
MKT-0034
DCN-2015-61. Revision 1.0
Release Date: 2015-Apr-1



smartlinxTM
Medical Device Information System

Unlocking the Power of Medical Device Data



The Challenge of Clinical Data Management

Data. It's everywhere in a hospital. But there is a big difference between having data and having useful, decision-guiding information. Devices surround patients, generating richly detailed data. And in an effort to improve surveillance and outcomes, patients are being connected to even more medical devices, while sicker patients are being placed in lower acuity settings where continuous monitoring is becoming more prevalent. From intensive care to medical-surgical, infusion pumps, ventilators and countless other medical devices are generating volumes of data. But what happens to the data? Fact is, much of it remains hidden, locked in the medical devices.

An Integrated System to Unlock the Data

What if there was a more efficient way to capture all patient and treatment data? What if there was a way to actually manage that device data, tailor it to the needs of users throughout a healthcare enterprise and seamlessly share it not only with clinical information systems and EMRs, but integrate it with other clinical applications such as alarm management and decision support?

What if there were ways to look at the information devices create about themselves through their own operation? Information about how they are being used and by whom. Information about their performance and how they are being deployed. And clinical insight into alarms and when vitals were last taken for patients.

What if there was a system to harness and unlock the power of medical device data and put it to work by integrating it with intelligent systems beyond the EMR?

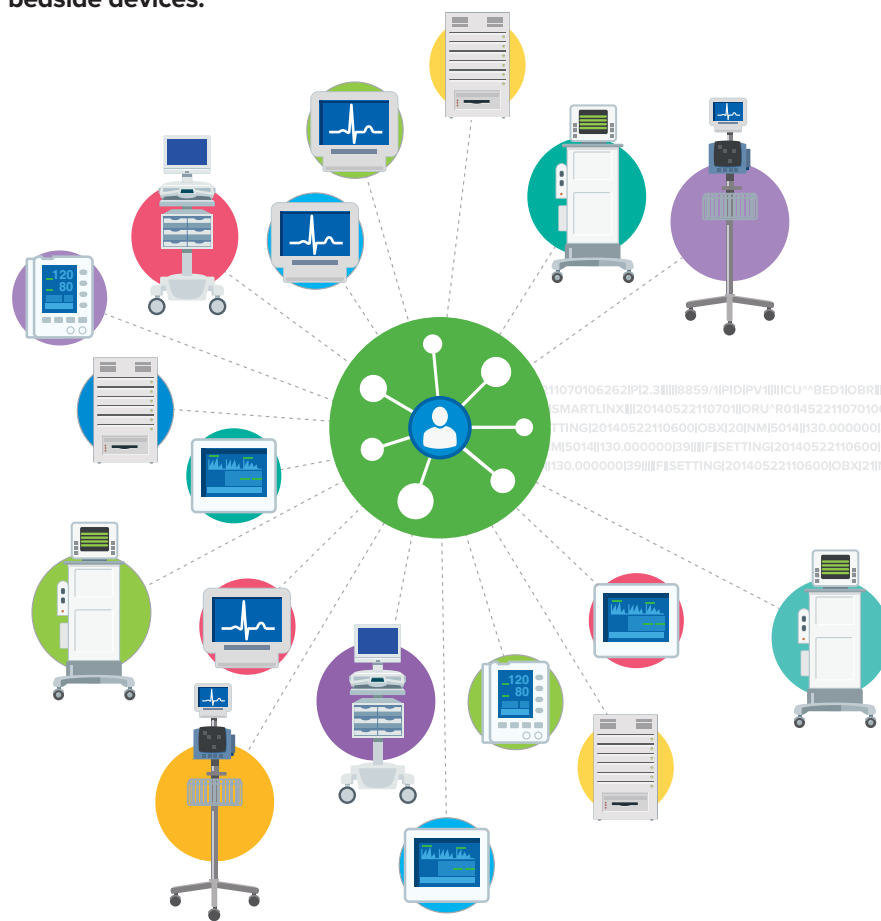
Connectivity

Flexible and Functional



With as many as 18 different device categories, each with unique IT requirements and clinical workflows, a single connectivity option is both impractical and inflexible. Capsule offers several options that not only meet virtually any connectivity scenario to capture data, normalize it, and put it on your network with relevant context, but that also enhances clinical workflow. Access to and communication of the data on each medical device is achieved by the industry's largest, dynamic library of device driver interfaces (DDIs) – over 730+ of them – that read and translate device protocols.

Capture data from all bedside devices.



Integration

Powerful, Adaptable and Manageable



The heart of the SmartLinx system is secure and robust server software. Fully scalable and upgradable, it is the engine that drives your MDIS. It is a vendor-neutral solution designed to aggregate, differentiate and distribute medical device data where and when it's need throughout your enterprise. SmartLinx can uniquely tailor data to the needs of receiving systems for clinical documentation, clinical decision support, alarm management, clinical research, and more through a process that provides data sampling, data selection, data adaptation and additional context, like location and patient ID.

Deliver data where and when it's needed.



Analytics

Insight Into Your Medical Device Infrastructure



Beyond clinical data, medical devices create data of their own – new information about the devices themselves – that offers insight into the status, deployment, performance, and operation and use of medical devices across your enterprise. Capsule provides access to the data through SmartLinx IQ®, an analytics solution that will offer insight into the operational aspects of your enterprise-wide device infrastructure. IQ is a window into the data captured by SmartLinx that will provide vision into clinical efficiency, medical device utilization and the overall “health” of your devices.

Deliver clinical and operational insights.



Capsule: Delivering the Power of Medical Device Data

Capsule is the leading global clinical data management company with over 1,800 hospital clients in 38 countries. Our core product, the SmartLinx Medical Device Information System™, is the product of nearly 20 years of medical device integration experience and is built on the foundation of our proven DataCaptor™ integration software, a system that has undergone numerous enhancements. Evolving along with the events and trends that have impacted healthcare, we've built our reputation on the proven ability of our products and services to harness and unlock the power of medical device data to:

- Improve processes for directly taking patient vitals
- Support connectivity to more medical devices than any other company in the industry
- Improve efficiency, timeliness, and accuracy of patient data communication.
- Provide timely clinical and operational insight
- Install systems via a time-tested implementation model

Taken together, Capsule solutions help improve the delivery of patient care by:

- Saving nursing time
- Reducing transcription errors
- Facilitating faster clinical decision-making through near real-time transmission of, and clinician access to patient vitals data in the EMR and other clinical applications
- Improving medical device operational efficiency
- Maximizing hospitals' investments in their medical devices

Professional Services

Capsule ensures the most cost-effective and efficient deployment of SmartLinx across your enterprise through a Professional Services team that offers a full range of services from project preparation through implementation services. From project management, training, and technical consulting to post-implementation support, Capsule addresses the full product lifecycle and helps you manage device integration projects from start to finish. Our project approach is based on best practices and follows a rigorous four-phased implementation process to help guide customers through the project lifecycle. This results in clearly defined project deliverables from project inception to closure.