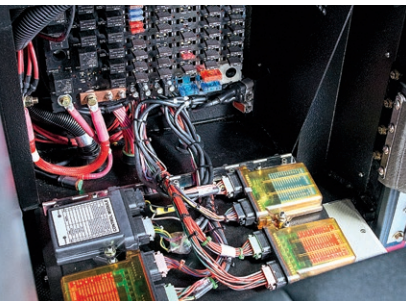




THE URBAN FIREFIGHTER'S BEST FRIEND.

City life isn't easy. Good thing the Arrow XT™ chassis is engineered with a utilitarian approach that will meet the needs of both the big city and the rural fire departments.

Designed and built with an emphasis on heavy-duty, the Arrow XT meets the demands of any high volume department with its rugged and dependable chassis and an all business cab interior.



Battle-tested, firefighter approved

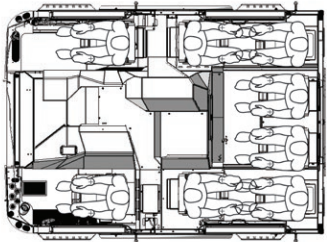
- Clean, functional and rugged metal interior tough enough to withstand heavy use.
- Big power, at 94¾" wide the Arrow cab is the narrowest cab in the industry providing up to 600 HP engines for maximum performance in a narrow, maneuverable fire truck.
- Heavy-duty construction throughout – rugged metal interior, thick-walled castings and purpose built structural extrusions for added strength and long term durability.
- Hard-wired electrical system or Command Zone™ electronics for advanced reliability, simplified subsystem integration, easier troubleshooting and maintenance.

Serviceability

- "Extreme Tilt" cab that allows easy inspection and maintenance of the drive train.
- Power distribution location provides access while standing with boots on the ground for convenient service and reduced maintenance time.
- Built-in wire raceways throughout the cab reduce the chance of wire chaffing and make it easier to service or add cab harnesses and wiring.

Maneuverability

- 15 degree angle of approach and departure to handle obstacles with confidence.
- 45 degree cramp angle for tight maneuvering.
- Massive 13¾" 120 ksi steel frame rails for superior handling and reduced frame deflection.



Specifications

Engine	Detroit Diesel DD13, Cummins ISX 12, ISX 15, or ISL 9
Engine Horsepower	370 – 600 HP
Transmission	Allison 3000 EVS, 4000 EVS, or 4500 EVS
Alternator	270 – 430 Amp
Front GAWR (maximum)	24,000 lb
Front Axle Suspension	Leaf or TAK-4™ Independent Front Suspension
Cramp Angle (maximum)	45°
Rear GAWR (maximum)	60,000 lb
Rear Axle Suspension	Leaf, Rubber, or Air; Single or Tandem
Frame Rail	13-3/8"
Cab Width	94-3/4"
Cab Length	57", 67" or 81"
Cab Roof Style	Flat or Raised (10", 16" or 20")
Seating Capacity	8
Doors	Barrier or Full Height
Side Roll Protection	Default
Frontal Air Bags	Default
Electrical System	Hard Wired or Command Zone™

www.piercemfg.com



Pierce Manufacturing Inc., An Oshkosh Corporation Company
P.O. Box 2017, Appleton WI 54912-2017 USA

Specifications, descriptions and illustrative material in this literature are as accurate as known at the time of publication, but are subject to change without notice. Illustrations may include optional equipment and accessories and may not include all standard equipment. All measurements are nominal values.

© Pierce Manufacturing Inc., Pierce, the Pierce logo and TAK-4 are registered trademarks and Arrow XT and Command Zone are trademarks of Pierce Manufacturing Inc., Appleton, WI. Printed in U.S.A.

All other trademarks are the property of their respective owners.

P-0014-ARRXTSS 1/16