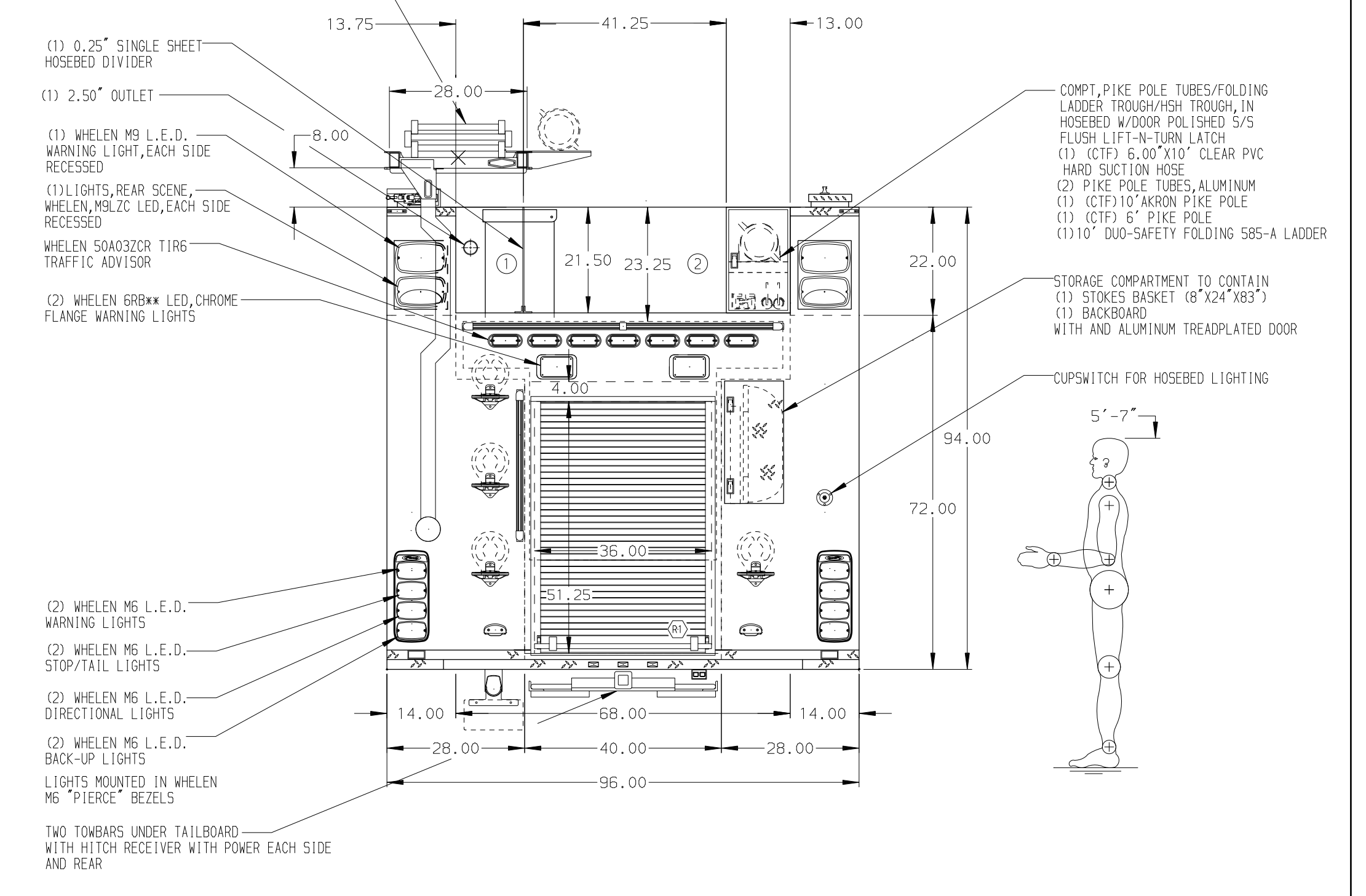
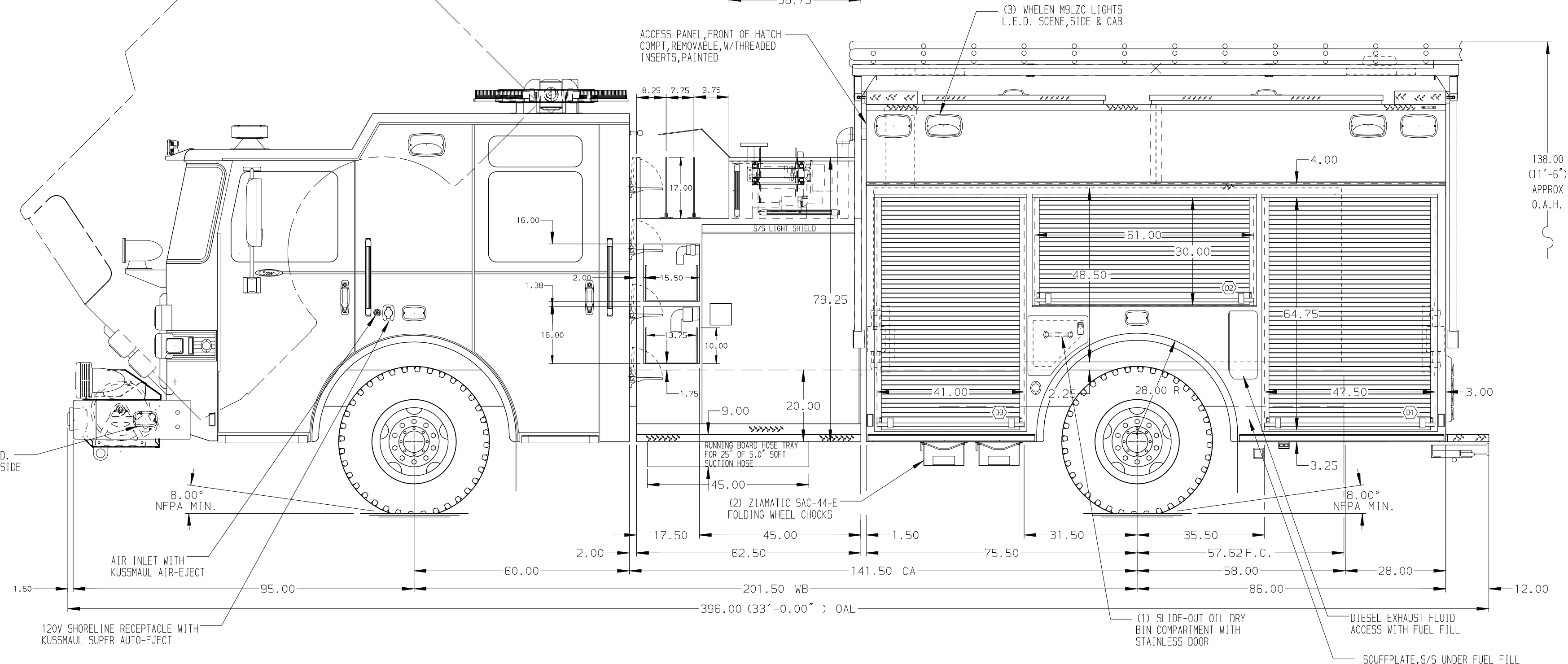


HOSEBED CAPACITIES
 ① 400' OF 2.50" D.J. POLY HOSE
 ② 1200' OF 5.00" D.J. POLY HOSE

HYDRAULIC LADDER RACK W/OFFSET ARM TO CONTAIN THE FOLLOWING EQUIPMENT:
 (1) 24" DUO-SAFETY 2-SEC 900-A
 (1) 14" DUO-SAFETY ROOF 775-A
 (1) TROUGH FOR (CTF) 6.0' X 10' CLEAR PVC HARD SUCTION HOSE



ALUMINUM BODY

NOTE
 DIMENSIONS SHOWN ARE APPROXIMATE AND ARE SUBJECT TO MINOR DEVIATIONS AS MAY OCCUR OR BE NECESSARY IN CONSTRUCTION. MINOR DETAILS NOT SHOWN.

REV	DATE	BY	CH
01APR16	JLA	RWI	
02MAR16	JAF	RWI	
11NOV15	LST	CSH	

		JOB NO.	29631
		SCALE	1:24
TITLE 1250-D-1000 GAL POLY, 161" FULL HEIGH, SPECIAL DEPTH (2) SPEEDLAYS, (3) X-LAYS, HYD. LADDER RACK, DELUGE	DATE		
	FOR	NORTHERN TAZEVELL FPD WASHINGTON, ILLINOIS	
DWG NO. 29631AD	CHECKED BY	LST	
	SHEET NO.	210CT15	
	SHEET SIZE	D	
		1 OF 1	