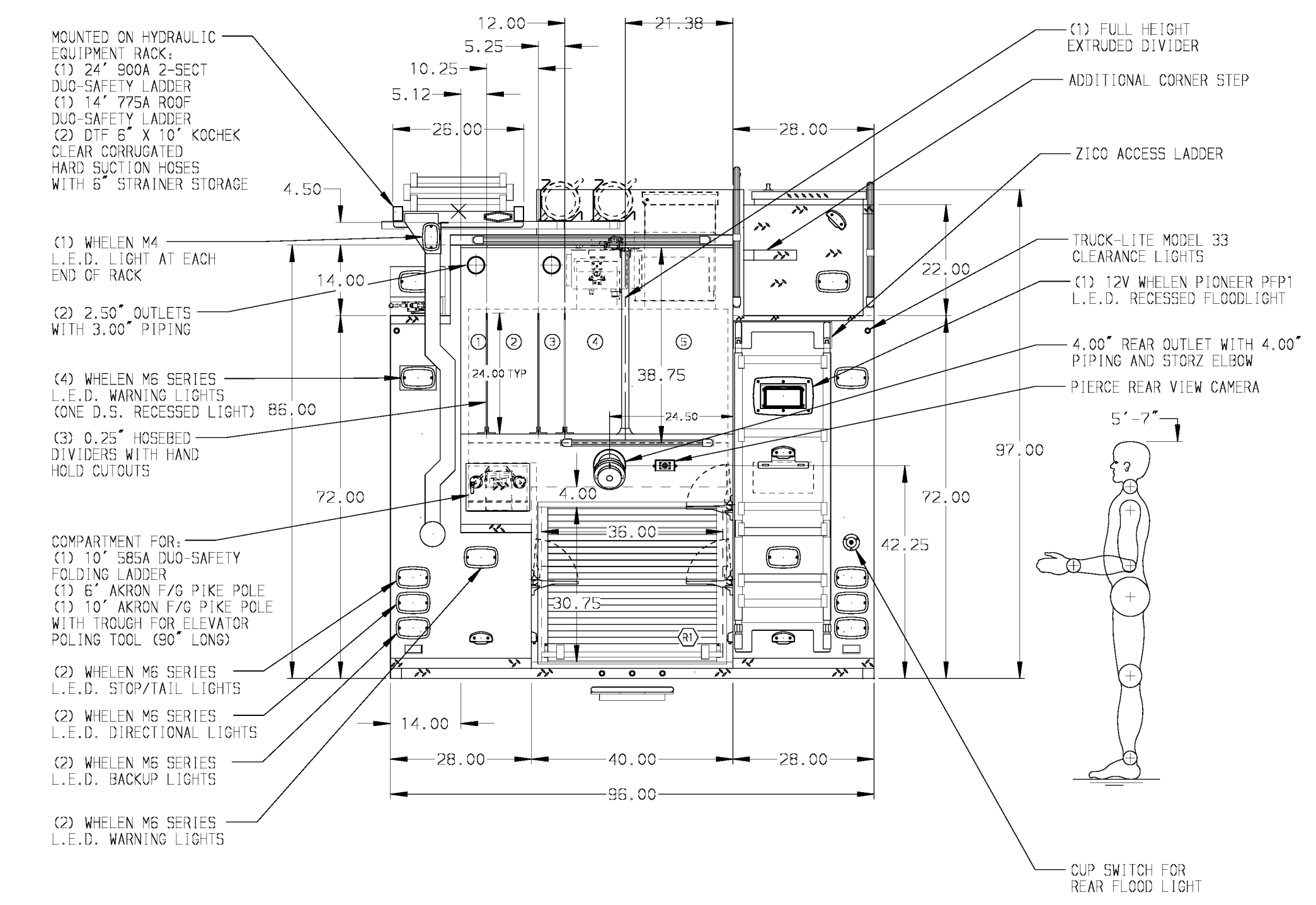


HOSEBED CAPACITIES

1	300' OF 2.50" D.J. POLY HOSE
2	400' OF 1.75" D.J. POLY HOSE
3	200' OF 2.50" D.J. POLY HOSE
4	500' OF 3.00" D.J. POLY HOSE
5	1000' OF 4.00" D.J. POLY HOSE



ALUMINUM BODY

SIDE ROLL PROTECTION
FRONTAL IMPACT PROTECTION

NOTE
DIMENSIONS SHOWN ARE APPROXIMATE AND ARE SUBJECT TO MINOR DEVIATIONS AS MAY OCCUR OR BE NECESSARY IN CONSTRUCTION. MINOR DETAILS NOT SHOWN.

- 5/8" S/STL SCUFFPLATE ON TOP EDGE OF FRONT BUMPER
- 5/8" S/STL PROTECTIVE GUARD FOR ROLL-UP DOORS
- SHELF TRACKS FOR SHELVES IN COMPARTMENTS D1, D2, D3, P1, P3 & R1
- ONE ADJUSTABLE FULL WIDTH/DEPTH INVERTED SHELF IN COMPT P1, (3) SHIPPED LOOSE
- ONE ADJUSTABLE FULL WIDTH/DEPTH SHELF IN COMPT D3, TWO IN D1 & P3
- ONE FLOOR MOUNTED SLIDE-OUT TRAY IN COMPARTMENTS D3, P1 & R1
- ONE ADJUSTABLE TILTING SLIDE-OUT TRAY IN COMPARTMENT P3
- SWING-OUT TOOL BOARD IN COMPARTMENT P2
- FOUR POLY TOL. BOX'S LOCATED IN COMPARTMENT P1, TWELVE SHIPPED LOOSE
- RETENTION NETTING LOCATED IN COMPARTMENT D1
- PAC TRAC MOUNTED ON REAR WALL OF COMPARTMENT D3
- ONE VERTICAL PARTITION IN COMPARTMENT P1/R1 & D1/R1
- ONE VERTICAL PARTITION IN COMPARTMENTS D1, P1 & P3
- THREE SPECIAL HEIGHT VERTICAL PARTITIONS SHIPPED LOOSE
- HINGED AIR BAG RACK IN COMPARTMENT D1
- ONE TOOL BOARD ON SLIDE-OUT TRAY IN COMPARTMENT P1
- L.E.D. PERIMETER SCENE LIGHTS LOCATED PER SHOP ORDER
- CIRCUIT BREAKER PANEL IN COMPARTMENT D3
- MOUNTING BASE'S FOR ANTENNAS LOCATED PER SHOP ORDER
- ONE 15A 6-PLACE RECEPTACLE STRIP IN P.S. EMS COMPARTMENT
- ONE HANNAY ELECTRIC REWIND CORD REEL MODEL 1618-17-18 WITH 200' OF 10/4 CORD IN P.S. CARGO AREA
- AIR INLET/OUTLET WITH DISCONNECT FITTING LOCATED ON DRIVER SIDE PUMP PANEL
- PIERCE LOGO MUDFLAPS FRONT AND REAR
- STAINLESS STEEL FENDER CROWNS FRONT AND REAR
- OTA MODEL D8L 75 BATTERY CHARGER LOCATED BEHIND DRIVERS SEAT W/COVER
- KUSSEMAUL AIR COMPRESSOR MOUNTING BEHIND DRIVERS SEAT

REV	DATE	BY	CH	ARROW-XT
02SEP15	AMI	TWH		
14AUG15	AMI	TWH		
05JUN15	AMI	WKL		

		JOB NO.	28982
		SCALE	1:24
TITLE 1500-D-630P WATER W/40G FOAM CELL, 161" LONG BODY PUMPER (2) XLAYS, HYD LDR RACK, DELUGE, GENERATOR, NIGHT SCAN FOR METROPOLITAN WASHINGTON AIRPORTS AUTHORITY DULLES, VIRGINIA		DRAWN BY	AMI
		CHECKED BY	WKL
DWG NO. 28982AD		SHEET SIZE	D
		SHEET NO.	1 OF 1