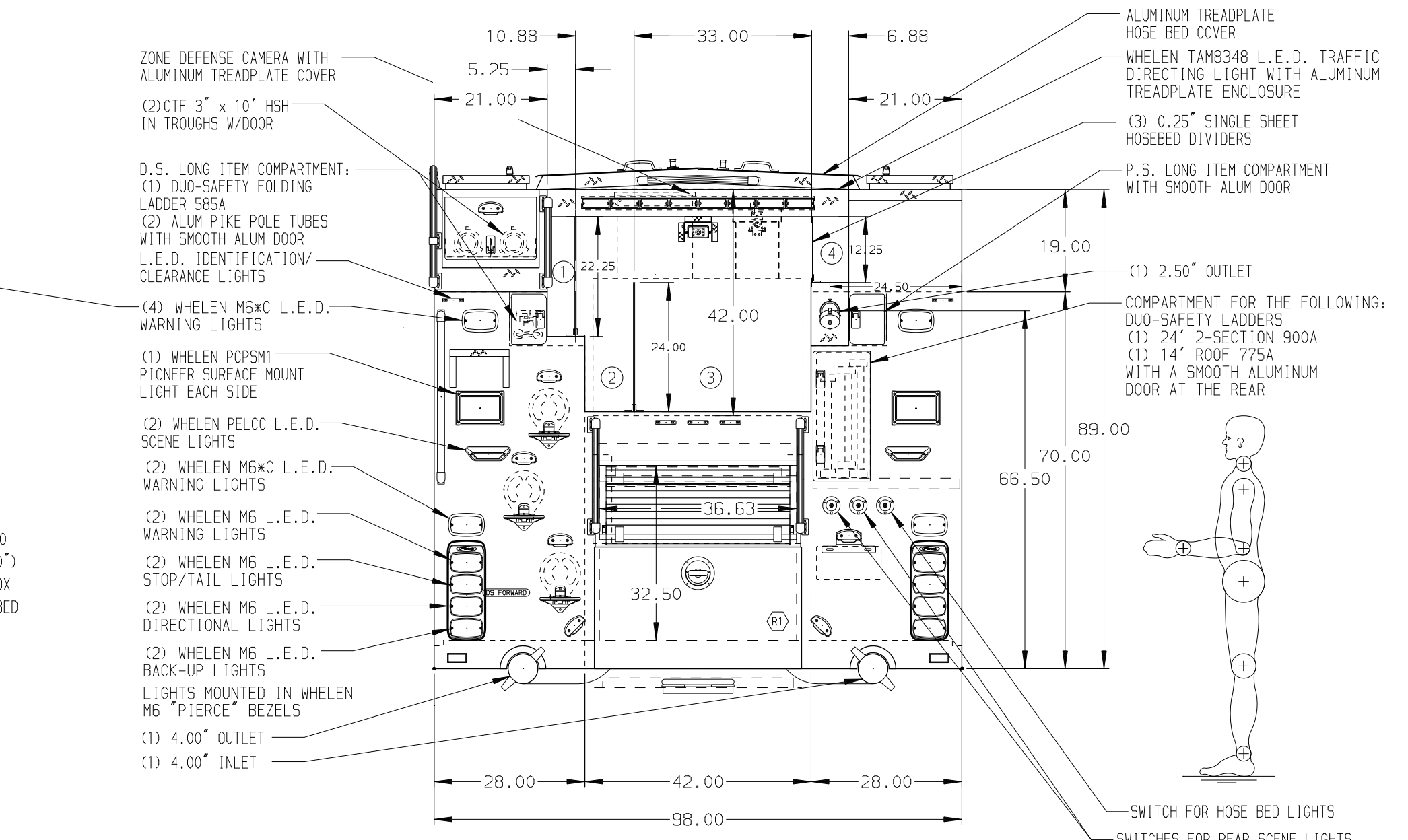


- HOSED CAPACITIES**
- ① - OPEN
 - ② - 500' OF 2.50" D.J. HOSE
 - ③ - 1000' OF 4.00" D.J. HOSE
 - ④ - 300' OF 1.75" D.J. HOSE



ALUMINUM BODY MAXIMUM O.A.L. 396.00" MAXIMUM O.A.H. 132.00" FRONTAL IMPACT AND SIDE ROLL PROTECTION

NOTE
DIMENSIONS SHOWN ARE APPROXIMATE AND ARE SUBJECT TO MINOR DEVIATIONS AS MAY OCCUR OR BE NECESSARY IN CONSTRUCTION. MINOR DETAILS NOT SHOWN.

1. VOGEL LUBE SYSTEM PUMP LOCATED PER SHOP ORDER
2. MOUNTING BASE FOR ANTENNA LOCATED PER SHOP ORDER
3. BATTERY CHARGER LOCATED IN COMPARTMENT D3
4. PERIMETER SCENE LIGHTS LOCATED PER SHOP ORDER
5. C-TECH CABINET IN COMPARTMENT P3
6. PIERCE L.E.D. COMPARTMENT DUAL LIGHT STRIPS LOCATED PER SHOP ORDER
7. ONE ADJUSTABLE FULL WIDTH/FULL DEPTH SHELF IN COMPARTMENT D1, TWO IN D3, & P1
8. ONE PAINTED ADJUSTABLE TILTING SLIDE-OUT TRAY IN COMPARTMENT D1
9. ONE PAINTED FLOOR MOUNTED SLIDE-OUT TRAY W/SIDE SLIDERS IN COMPARTMENT P1
10. ONE PAINTED FLOOR MOUNTED SLIDE-OUT TRAY W/SIDE SLIDERS IN COMPARTMENT P1

11. ONE PEGBOARD TOOLBOARD ADDED TO SLIDE-OUT TRAY IN COMPARTMENT D1
12. THREE ALUMINUM SLIDE-OUT TOOL BOARD IN COMPARTMENT P3
13. ONE SWING-OUT TOOLBOARD WITH PEGBOARD IN COMPARTMENT D2
14. TWO POLY TOOL BOXES 22" x 10" x 10" IN COMPARTMENT D1
15. DRI-DECK MATTING WITH BEVEL ON COMPARTMENT FLOOR IN COMPARTMENT D2, P2 & P3
16. DRI-DECK MATTING ON SHELVES IN COMPARTMENTS PER SHOP ORDER
17. VERTICAL PARTITION IN COMPARTMENT D1 & P3
18. ALUMINUM PEGBOARD WITH TRACKS ON REAR WALL IN COMPARTMENT P2 & P3
19. COMPARTMENT VENTILATION SYSTEM
20. 5 GALLON BUCKET OF GREASE FOR VOGEL SYSTEM SHIPPED LOOSE

21. PIERCE LOGO MUDFLAPS FRONT AND REAR
22. STAINLESS STEEL FENDER CROWNS ON CAB AND BODY
23. STAINLESS STEEL TRIM BAND LOW ACROSS CAB DOORS
24. ANCHOR PLATE FOR NEDERMAN EXHAUST SYSTEM ON PS SUPPLIED BY CUSTOMER
25. ONE AIR INLET WITH KUSSMAUL AIR-EJECT LOCATED IN DRIVERS SIDE STEP WELL OF CAB
26. TRANSVERSE REAR COMPARTMENT PARTITION D5/P5
27. ADDITIONAL PIERCE L.E.D. LIGHT STRIPS LOCATED IN LADDER STORAGE COMPARTMENT AND HATCH COMPARTMENTS PER SHOP ORDER
28. ONE 120V DUPLEX RECEPTACLE IN COMPARTMENT D1
29. BOX FOR HYDRAULIC TOOL STORAGE IN COMPARTMENT D1

REV	DATE	BY	CH	DASH CF
1	18MAY15	AMI	SHE	MAKE
2	24APR15	AMI	ANG	PIERCE
3	06MAR15	AMI	CDU	MODEL

		JOB NO.	28681
		SCALE	DATE
TITLE	1500-D-500P 450G WATER, 50G FOAM, 189 PUC RESCUE LADDERS THROUGH BODY, 3-XLAYS, HUSKY 12, DELUGE	DRAWN BY	AMI 17FEB15
FOR	RICHMOND FIRE DEPARTMENT RICHMOND, BRITISH COLUMBIA, CANADA	CHECKED BY	CDU 17FEB15
DWG NO.	28681AD	SHEET SIZE	SHEET NO.
		D	1 OF 1