

IT TAKES ON MORE
SO YOU CAN FOCUS ON LESS.



OSHKOSH
AIRPORT
PRODUCTS

H-SERIES SINGLE ENGINE BLOWER

Proven parts. Compact size. Self-reliant design. The Oshkosh® H-Series™ Single Engine Blower (SEB) is as nimble as it gets. The Oshkosh designed and produced blower head matches vehicle horsepower to max out efficiency.

And there's no more managing engine RPM. Oshkosh Work Control™ syncs the blower with the wheels. So you can throw all your attention at what lies ahead.

PERFORMANCE FEATURES

Vehicle Weight Balance

- Weight distribution increases safety, control and maneuverability
- 120" wheelbase distributes vehicle weight for best performance

Optimized Hydraulics

- Optimized pressure and flow improves life of components
- Shorter-length routings simplify service and maintenance
- Large pump size allows for lower pressures

Proven Oshkosh Components

- Utilizes axles used in thousands of trucks in service across the world
- Purpose-built Oshkosh drive box designed for heavy-duty use
- Blower head planetary developed from battle-proven Oshkosh MTRV and used on the Oshkosh Striker

Blower Head Size & Design

- Blower head size matches vehicle horsepower for maximum efficiency
- Robust frame built specifically for snow clearing in adverse conditions
- Proven design is based off the existing H-Series Blower

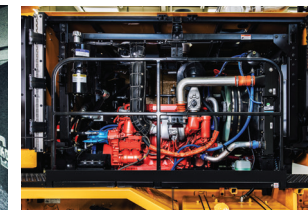
Tier IV Final Engine

- SCR emissions solutions - No DPF required
- Meets 2017 EPA emissions standards

Simple Power Management

- Oshkosh Work Control™ manages power to blower head and drive wheels with one easy dial
- Focus on blowing snow and not managing engine RPM

A SMARTER DESIGN. A MORE SINGULAR FOCUS.



CHASSIS

Standard Accessories

- Snow clearing speed of 11 mph (17.7 kph)
- Travel speed of 30 mph (48.3 kph)
- 3,000 tons/hour capacity
- Cast distance of 75-150 ft. (22.9 - 45.7 m)
- 102 in. (2591 mm) overall blower head cut width
- Overall height of 140 in. (3556 mm)
- 48 ft. wall to wall turning circle when equipped with Oshkosh® ALL-STEER®
- Wheelbase of 120 in. (3048 mm)
- Available up to 27,000 lb. (12247 kg) front axle, 23,000 lb. (10433 kg) rear axle
- Flat cast to the right
- National Standard Plus air ride driver seat, right of center
- 55,000 BTU heater/defroster
- Digital climate control
- 24V electrical system
- 12V power outlets (2)
- USB power plugs (2)
- Cup holders (2)
- Electronic engine controls with on-board diagnostics integral with Oshkosh® Command Zone™ system
- Electric remote control heated West Coast type mirrors
- Fresh air type heater and defroster
- Light bars
- Quad electric windshield wipers mounted above windshield with intermittent speed control
- Side window defrosters
- Tilt-telescoping steering wheel
- Windshield washer, 6 qt. (5.7 L)
- Weight transfer
- Fuel cap total of 230 gal. (870 L)

Equipment

- Heated fuel/water separator
- Fiberglass clam shell design with two doors per side
- Full-height stainless steel piano-type hinges assure door alignment
- Wide-open easy access enables routine maintenance inspection safely from the ground
- Lighted engine enclosure

Engine

- 500hp Scania Tier IV Final SCR
- Governed RPM - 2,100

OSHKOSH BLOWER HEAD & POWER TRAIN

Clutch

- Hydraulic SAE No. 1 housing, engage/disengage
- 14 in. (356 mm) 3 plate

Ribbon Auger

- Hydraulic override and relief
- Reversible ribbon drive

Head

- Configured for pneumatic or steel caster wheels
- Easy service shear flange
- 70° cutting edge (50° optional)
- T-1 steel cutting edge
- Abrasion resistant skid shoes

Cooling System

- Radiator core – fin and tube type with deaeration system
- Dual hydraulic cyclonic reservoirs; hydrostatic drive system and blower ribbon hyd
- Each reservoir has a hydraulic cooler to optimize performance
- Fan - temperature controlled clutch
- Spin on coolant filters
- Silicone radiator and heater hoses

BLOWER OPTIONS

Blower Head

- Spot casting loading chute
- Truck loading chute
- 70° cutting edge (50° optional)
- Poly cutting edges

CHASSIS OPTIONS

Accessories

- Integral A/C
- Heated windshield
- Side window wipers
- "Windshield deluge" 17 gal. (64.4 L)
- 50° cutting edge
- ALL-STEER® electronic all-wheel steering

**All specs subject to change*

OSHKOSH
AIRPORT
PRODUCTS

H-SERIES SINGLE
ENGINE BLOWER

oshkoshairport.com

+1 920 235 9151