

BatchMaster Manufacturing for SAP Business One extends SAP B1 to provide the functionality required by Process or Recipe-based manufacturers, while retaining the power of the native SAP B1 distribution modules of Inventory, Sales Orders and Purchasing. These manufacturers include Food and Beverage, Paint and Coatings, Cosmeceutical including Personal Care products and Cosmetics, Nutraceutical, Pharmaceutical, and Specialty Chemicals.

BatchMaster has been a leader in the field of process manufacturing software for more than two decades, with over 1500 customers all around the world, and is an SAP Certified ISV (Independent Software Vendor). BatchMaster has 160+ development, consulting and marketing staff dedicated to addressing the mid-market process manufacturing industry.

BatchMaster Manufacturing for SAP Business One

Formula, Bill-of-Materials

Costing

Inventory

Units of Measure

Master Production Schedule (MPS)

Schedule Board/ Batch Scheduling

Accounts Payable

Purchasing

Human Resource

Health & Safety Compliance

Statistical Forecasting

Advanced Production Scheduling

Batch Tickets (Production)

Laboratory

Lot Tracking

Physical Properties

Material Requirements Planning (MRP)

General Ledger

Accounts Receivable

Customer Relationship Management

FDA / GMP Compliance

MSDS Material Safety Data Sheets

BM Mobile Warehouse Management

Bill of Materials

Independent End Items

BOM Explosion

Show data of all children of selected item | Show data of immediate children of selected item

#	Item No.	Whse	FormulaID	MakeFormulaID	FillIn
1	Apple Crisp3.6	WH01		Apple Crisp	W
2	PK006	WH01		Apple Crisp	W
3	RM010	WH01		Apple Crisp	W
4	RM011	WH01		Apple Crisp	W
5	RM012	WH01		Apple Crisp	W
6	RM013	WH01		Apple Crisp	W
7	RM014	WH01		Apple Crisp	W
8	RM015	WH01		Apple Crisp	W
9	RM016	WH01		Apple Crisp	W
10	RM017	WH01		Apple Crisp	W
11	RM018	WH01		Apple Crisp	W

Expand whole tree | Collapse whole tree | Cancel Explosion

Expanding BOMs: 100%

OK | Cancel

Item Masters

Lot Tracking Added

Item Master Details

Item Number: AmoxicillinCP250mg
Description: Amoxicillin Capsules BP 250 mg

General | Inventory | **UOM Conversions** | Batch Options

Batch Options

Expiry Days: 180
Quarantine Days: 2
Default Batch Size: 0.00
Shelf Life: 180

Inventory Method
 FIFO
 FEFO
 LIFO

Batch/Serial Generation Method
 Automatic
 Custom
 Manual

Optional Batch/Serial Formatting
 Item Key (1)
 DOC NO (2)
 Custom Characters (3)
 Date (4) DD MM YY MMDDYY
 Seq No (5) 167
 Default Format: ITEMKEY-MMDDYY-150

Formulation

Formulate independently

Formula Entry

Formula Key: Apple Crisp
Formula Description: Apple Crisp

Formula Items | ByProducts | Formula Master | Safety | Cost

Type	Item No.	Description	Whse	Qty Required	Unit	O/H	Cost/Unit
Boilerplate	Step-1	Pre-Heat		0.000			\$ 0
Material	RM010	Apple Slice	WH01	1.250	KG		\$ 10
Material	RM011	White Sugar	WH01	0.750	KG		\$ 1
Material	RM012	Flour	WH01	0.250	KG		\$ 1
Material	RM013	Cinnamon	WH01	0.200	KG		\$ 1
Material	RM014	Water	WH01	0.100	KG		\$ 1
Boilerplate	Step-2	Pre-Mix		0.000			\$ 0
Material	RM015	Oat	WH01	0.500	KG		\$ 1
Material	RM016	Baking Powder	WH01	0.150	KG		\$ 1
Material	RM017	Baking Soda	WH01	0.200	KG		\$ 1
Material	RM018	Meltd Butter	WH01	0.500	KG		\$ 1

Summary

Total Weight (KG)	3.900
Total Volume (L)	3.900
KG/L	1.000
Cost/KG	\$ 4.15
Cost/L	\$ 4.15
Total RM Cost	\$ 16.19

Cancel

Physical Property Analysis

Formula Key: Apple Crisp
Formula Description: Apple Crisp

Formula Items | ByProducts | Formula Master | Safety | Cost

Check	Type	Item No.	Description	Whse	Weight%	Qty Required	Property	Value
	Boilerplate	Step-1	Pre-Heat		0.000	0.0	Protein	162.550
	Material	RM010	Apple Slice	WH01	32.051	1.2	Total lipid (fat)	570.325
	Material	RM011	White Sugar	WH01	19.231	0.7	Carbohydrate	1554.350
	Material	RM012	Flour	WH01	6.410	0.2	Ash	24.650
	Material	RM013	Cinnamon	WH01	5.128	0.2	Energy	11520.000
	Material	RM014	Water	WH01	2.564	0.1	Starch	0.000
	Boilerplate	Step-2	Pre-Mix		0.000	0.0	Sucrose	1.250
	Material	RM015	Oat	WH01	12.821	0.5	Glucose (dextro)	0.250
	Material	RM016	Baking Powder	WH01	3.846	0.1	Fructose	0.000
	Material	RM017	Baking Soda	WH01	5.128	0.2	Lactose	0.000
	Material	RM018	Meltd Butter	WH01	12.821	0.5	Maltose	0.000
	Boilerplate	Step-3	Bake in the pre...		0.000	0.0	Alcohol, ethyl	0.000

Summary

Total Weight (KG)	3.900
Total Volume (L)	3.900
KG/L	1.000
Cost/KG	\$ 4.15
Cost/L	\$ 4.15
Total RM Cost	\$ 16.19

OK | Cancel

Laboratory

Empower R&D

Sales Order

Flow from Business One to BMM

Sales Order

Customer: C001
Name: WALMART
Contact Person: Amanda Costner
Customer Ref. No.:
Local Currency:

No. Primary: 6
Status: Open
Posting Date: 11/15/10
Delivery Date: 11/30/10
Document Date: 11/15/10

Contents | Logistics | Accounting | Production Orders | Purchase Orders

Item No.	Item	Quantity	Unit Price	Discount %	Tax Code	Total (L.C.)	Whse
1	Apple Crisp3.6	300	\$ 32.50	0.000		\$ 9,750.00	WH01
2				0.000			

Sales Employee: -No Sales Employee-
Owner:

Total Before Discount: \$ 9,750.00
Discount: %
Tax: \$ 0.00
Total: \$ 9,750.00

Copy From | Copy To

Administration | Sales Order

Customer: C001
Name: BLUE STAR NUTRACEUTICALS
Sales Order: 92

To: bob.makensy@bluestar.net
From: [Name]
Subject: Sales Order 92

Send | Cancel

Open Documents:
A/R Down Paym...
A/R Invoices
A/R Credit Memos
A/R Reserve Invo...
A/R Reserve Invo...

Common Functions:
Journal Entry
Journal Vouchers
Incoming Payments
Outgoing Payments
Reconciliation
Checks for Payment
A/R Invoice
A/R Invoice
A/R Credit Memo
A/R Credit Memo

Order Confirmation

Email Direct to Customer

Compliance

- Generate CoA / MSDS & Nutritional Labels
- Kosher Approvals
- Manage Allergens, Halal, Organic, etc.
- Full GMP support

Certificate of Analysis

Send To: Home Customer: SA
Factory Ltd
California
Customer: PO #
Product Description: STP-FG-CANBUBULK - Bulk Prepared Cookball

Ship To: SA
Factory Ltd
California
Ship Date: 01/05/2006
Lot #: 0000000001644-050106-0000
MFG. Date: 01/05/2006
Exp. Date:

Test Description: COLOR, FLAVOR, NUTRITIONAL QUALITY, SODIUM

Test Result: Passed, Failed, Not Tested

Control Limits: Minimum, Maximum

Nutrition Facts

Serving Size: 12 (1.5)
Serving Per Container: 2

Amount Per Serving	Calories from Fat: 0	% Daily Value*
Calories 220		
Total Fat 0g		0%
Saturated Fat 0g		0%
Trans Fat 0g		0%
Cholesterol 0mg		0%
Sodium 0mg		0%
Total Carbohydrate 57g		100%
Dietary Fiber 0g		0%
Sugars less than 1g		0%
Protein 0g		0%
Vitamin A 0%		0%
Vitamin C 0%		0%
Iron 0%		0%
Calcium 0%		0%

*Percent Daily Values are based on a diet of other people's misdeeds.

MATERIAL SAFETY DATA SHEET

24-hour Emergency Phone:
PRODUCT CODE: 02-C100

Page 1

PRODUCT NAME:	RedOxide Primer	HMS CODES:	H	C	F	R	P
PRODUCT CODE:	02-R1000		3	1	1	0	0

SECTION I - MANUFACTURER IDENTIFICATION

MANUFACTURER'S NAME: Specialty Chemical Products Inc.
ADDRESS: 42R...MOZART...DE...MILKOB

ON, ON, L9T 3YS

INFORMATION PHONE: 905-878-8863 | DATE PRINTED: 2/13/2007

SECTION II - HAZARDOUS INGREDIENTS/SARA III INFORMATION

REPORTABLE COMPONENTS	CAS NUMBER	VAPOR PRESSURE mm Hg	θ TEMP	WEIGHT PERCENT
*DIETHYLENE GLYCOL MONOMETHYL ETHER OSHA: N/E, ACGIH: N/E, OTHER: N/E	111-66-3	1	68	3
*DIETHYLENEGLYCOL MONOBUTYL ETHER OSHA PEL: N/E, ACGIH TLV: N/R, OTHER: N/E	112-34-5	.02	68	4

Production

Plan and Expedite

10/29/2009 6:49:49PM

Transfer Sales Order To Batches

Batch No.: 10001 Sales Order Number: 1 Process Cell:
 Formula Key: Vanilla Cook Batch Type: Mix Order Quantity: 1.0000
 Finished Goods Location: 01 Unit: LB

Lot Handling

Issue and Allocate

Batch Ticket

File Edit Data Goto Help

Lookup Criteria

Batch Number: 1014 Formula Key: Apple Crisp
 Batch Type: Mix Warehouse: 000008
 Batch Status: Issued
 Issue/Allocate Date: 11/18/10

#	Select	Line Type	Item No.	Description	Wh	Issued	Actual Qty	Qty P...
		Boilerplate	Step-1	Preheat oven to...		0.0000	0.0000	
		Material	RM010	Apple Slice		3.4615	0.0000	
		Material	RM011	White Sugar		3.0769	0.0000	
		Material	RM012	Flour		6.923	0.0000	
		Material	RM013	Cinnamon		1.1538	0.0000	
		Material	RM014	Water		0.0769	0.0000	
		Boilerplate	Step-2	In a large bowl...		0.0000	0.0000	
		Material	RM015	Oat		3.3846	0.0000	
		Material	RM016	Baking Powder		1.6154	0.0000	
		Material	RM017	Baking Soda		1.1538	0.0000	
		Material	RM018	Melred Butter		3.3846	0.0000	
		Boilerplate	Step-3	Bake in the pre...		0.0000	0.0000	
		Text				0.0000	0.0000	

Used Weight: 900.001 Used Volume

OK Cancel

Batch Ticket

File Edit Data Goto Help

Lookup Criteria

Batch No.: 1014 Batch Type: Mix
 Batch Status: Issued

Size Batch

Batch Weight
 Batch Volume
 Finished Goods Order...
 % Formula in Process
 Premix Quantity
 Available Material
 Available of One Mat...
 Quantity of Material

Available of One Material

Choose the Material whose available quantity will be used to size the Batch
 Press OK to Size the Batch or Select different Sizing Option from Left Pane

Item Key	Description	Location	Qty Req(Disp UOM)	Stod
1 RM010	Apple Slice	WH01	173.0769	
2 RM011	White Sugar	WH01	103.8462	
3 RM012	Flour	WH01	34.6154	
4 RM013	Cinnamon	WH01	27.6923	
5 RM014	Water	WH01	13.8462	
6 RM015	Oat	WH01	69.2308	
7 RM016	Baking Powder	WH01	20.7692	

0.000 Used Volume 0.000

OK Cancel

Replanning

Rework and Resize

Production QC

File Edit Data Goto Help

Batch No: 1012
 Batch Status: New
 Scheduled Start Date: 11/18/10
 Sample Set: [Dropdown]

Notes

Create Duplicate Sample Set

Item / Formula Key

Item Formula Key: Apple Crisp Whse

#	TestID	Description	Result Type	Result Alpha	Result Numeric	Tested By	Test Date
	Apperance	Apperance	Pass/Fail Va...		0.000		11/18/10
	Color	Color	Alphanumer...		0.000		11/18/10
	Microbial	MicroBial	Numeric Val...		0.000		11/18/10
	pH	pH	Numeric Val...		0.000		11/18/10
	PURITY	PURITY	Numeric Val...		0.000		11/18/10
	Moisture	Moisture	Numeric Val...		0.000		11/18/10
*							01/12/11

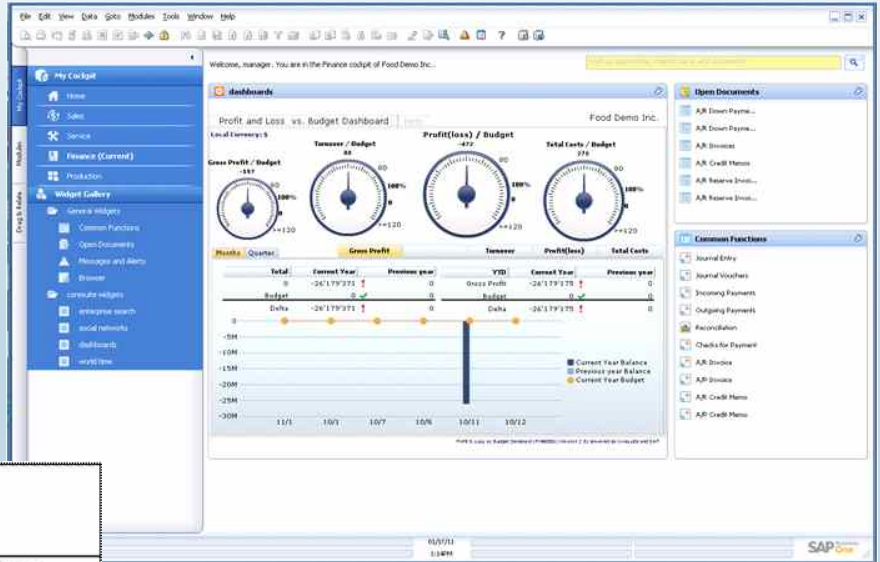
OK Cancel

Production QC

Manage Sample Sets

Reporting

Dashboard with Drill Down



Costing

Manage Multi-level Costing

PRODUCT COST ANALYSIS
INFOFOOD Ltd.

Formula ID APPLE JUICE F **COST ANALYSIS**

ASSEMBLY BOM/BOM KEY	APPLE JUICE BOTTLE - DO[1.0000-GAL]	APPLE JUICE BOTTLE - SO[1.0000-LB]
Material Cost	50.070000	6.000000
Formula Labor Cost		
Formula Overhead		
Formula Labor OH		
Formula Line Loss		
Loss Factor		
Loss Constant		
Assembly BOM/BOM Cost		
BOM Material Cost		
BOM Labor Cost		
BOM Overhead Cost		
Formula Fixed Labor		
Formula Fixed Overhead		
Formula Variable Labor		

Historical vs. Theoretical Cost Report
INFOFOOD Ltd. 13-Feb-2007 8:40-AM

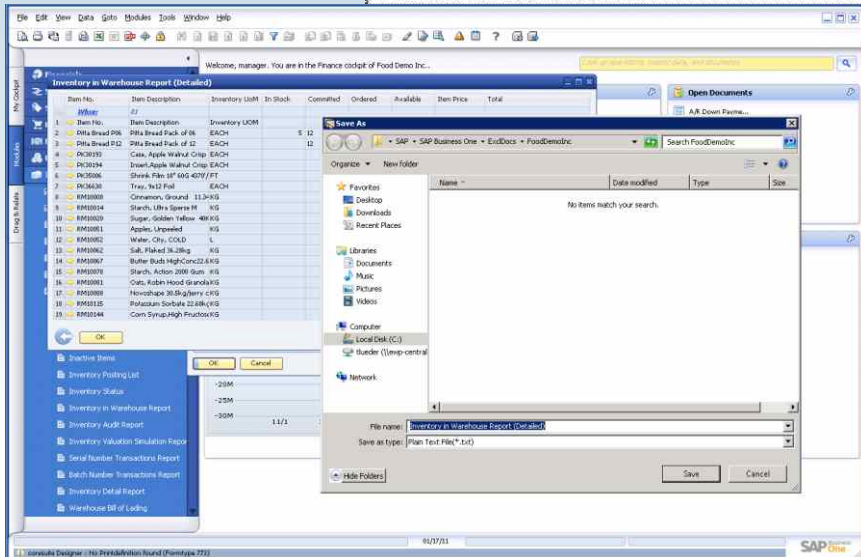
Formula Key	Description	Historical RMC	Calculated Cost	Variance
AD-3500	Maravilla Liquid Formula	9.280191	10.359737	-1.079546
AD-5525	Alcoholado Liquid Formula & Packaging	2.253340	2.000000	0.253340
MD-250	VITAMIN C 250MG UNCOATED TABLETS	\$3.848525	5.048438	\$3.000087
NEWFORM	VITAMIN C High Strength 250MG UNCOATED	5.206200	5.116948	0.089252
PLUMBONBON	Plan Caramel Beadob	5.452439478	907.200000	4.545439478
PLUMCAMELSAV	Plan Caramel Savage	\$73.291121	\$71.427129	1.863992
STF-CRNBRENT	Conchosa Intermediate	0.786521	6.786268	-6.000047

Production

Understand Variance

Update Finished Good Cost
INFOFOOD Ltd.

Finished Good Key Location (Description)	Qty. On Hand	Avg. Cost	Previous		New		
			Last Cost	Std. Cost	Avg. Cost	Last Cost	Std. Cost
AD-1050 DO(CAP 28mm HUMPHREYS)	91,999.0000	0.010000	0.010000	0.010000	0.000000	0.000000	14.536000
AD-5225 DO(ALCOHOLADO MARAVILLA "70")	0.0000	0.000000	0.000000	0.000000	0.000000	0.000000	3.380000
			3.000000	0.000000	\$3.000000	0.000000	



Replanning

Update costs as you go

Reporting

Export to Excel