

# S-Series 2 Person Infrared Sauna Touch Pad and Bluetooth IG-825-SH/S825

## User Manual



This Product is covered by:  
US Patents No. 8,692,168  
Canadian Patents No. 2,729,500  
2,794,059 & 2,813,340

**Note:** Room must be installed on flat, level surface.

Precautions Before Use	2
Preassembly Information	2
Electrical Requirements	3
Sauna Assembly	4
Electrical Connection-Under Bench	8
Electrical Connection-Inside Ceiling	13
Control Panel Instructions	16
Lighting Operation	16
Audio System	17
How to Use Sauna	18
Tips & Troubleshooting	19
Wiring Diagram	20
Warranty	21

## **Precautions before Use: Warning (Room Configuration & Use):**

- Proper Electrical Grounding is Required
- Electrical Receptacles not Allowed in the Room
- Do not Apply Water to any Heating Element
- Do not Add a Locking or Latching System to the Door
- Do not Block Ventilation Openings
- Children Must be Supervised at all Times in the Sauna

*NOTE: A GFCI (Ground Fault Interrupt Circuit) device is not required by NEC. A GFCI may be installed if required by local codes but will nuisance trip during use of the product. - CAUTION: Loose wire connections can cause heat damage to wires, terminal blocks and other components and may void the warranty.*

**Electrical Caution – Do not plug the room power cord into an electrical outlet until Room Assembly is completed!**

### **a. Warning (Human Limitations):**

Prolonged Exposure at Elevated Temperatures May Cause Hyperthermia (Body Temperature is Several Degrees Above 98.6F)

Hyperthermia Symptoms include: Dizziness, Lethargy, Drowsiness, and Fainting

Hyperthermia can cause:

- Fetal Damage in Pregnant Women
- Physical In-Ability to Exit the Room
- Loss of Consciousness

Notice - Use of Alcohol or Drugs Increases the Risk of Fatal Hyperthermia

If You Have any Health Problems or Health Conditions, Consult Your Physician Prior to Sauna Us, Discontinue Use if Nervousness, Tremor, Headache, Feeling of Sickness or Nausea Occurs

### **b. Warning (Fire Hazards):**

Do Not Use the Sauna Room for Drying Cloths, Bathing Suits, Etc.

Do Not Hang Towels or Other Objects on Heater Grills

Never Operate this Sauna Room if it Has a Damaged Cord or Plug

## **Pre-assembly Information:**

- a. Two (2) adults are required for the assembly and installation of the room.
- b. Assembly Tools: Phillips Screw Driver
- c. Boxes are labeled in the order of room assembly
- d. Note: Front wall glass assembly is heavy and fragile.

**Box #1:** Floor, Ceiling, Bench Skirt, Bench, Manual & Deluxe Door Handle Set

**Box #2:** Left & Right Walls

**Box #3:** Front & Back Walls

**Electrical Requirements:** The IR Sauna Room is designed for a 120 Volt AC / 15 or 20 Amp Circuit Breaker!

**A 120 Volt AC (dedicated) circuit is recommended to avoid unnecessary tripping of the breaker.**

The Sauna should be plugged into a NEMA (5-15R or 5-20R) Amp electrical outlet.



5-15R

5-20R

IG 810SH	15 Amp
IG 820SH	15 Amp
IG 825SH	20 Amp
IG 830SH	20 Amp
IG 840SH	20 Amp
IG 870SH	15 Amp
IG 880SH	20 Amp



Box label will indicate the model of the room and the room serial number, the label will also give you the box number and the internal contents.

Record your model number and serial number from box in the event you should need to contact your dealer or technical support.

**Serial Number** \_\_\_\_\_

**Model Number** \_\_\_\_\_

**Dealer Name** \_\_\_\_\_

# Sauna Assembly Instructions

---

## Floor Panel (Box #1):

- Locate the Floor Panel on a level surface (3-6) inches from wall and no more than (5 ft) from 120 Volt AC / 20 amp dedicated receptacle.
- Position the Floor panel so that the Ceramic tiles / IR Floor Heaters are to the front of the room

*Note: place the Ceiling, Bench Skirt and Bench to the side until the appropriate steps.*



*Note: place the power cord on the ground to the side of the floor; be sure that all wires and connectors on the sauna floor are clear of the slots.*



**Note – Do NOT Plug the Sauna Room 120 VAC Power Cord into the Outlet Yet!**

### Back Wall (Box #3):

*Note: after opening box 3 -- store Front Wall panel until that step of the assembly process.*

*Be sure to control the door from opening when moving the Front Wall Panel to prevent breakage.*



- Place Back Wall panel into the back slot of the Floor Panel.
- Back Wall panel must be held in place until the Right Wall panel is added.



### Right Wall (Box #2):

- Place Right Wall section into the right slot of the Floor Panel.
- Attach Back Wall to the Right Wall by lifting up the Right wall sliding into the corner interlock brackets.



### Left Wall (Box #2):

- Place Left Wall section into the left slot of the Floor Panel.
- Attach the Back Wall to the Left Wall by lifting up the left wall sliding into the corner interlock brackets.



*Note: When wall panels are connected in place properly the corners will be level and flush on top.*

### Bench Skirt (Box #1):

- Insert the Bench Skirt in between the Right Wall and the Left Wall panels tracks.
- Slide Bench Skirt all the way to the floor. Do not pinch any wires under the skirt.
- Latch the buckles securing the floor to the Bench Skirt. **Do not** latch the buckles for the left and right wall panel at this time.



### Bench Top (Box #1):

- Slide the Bench seat down against the back wall with Power Junction Box facing you.
- Tilt the Bench against the Back Wall so it will remain standing.



**Electrical Connections (under bench - right side):**

- Connect wire #4 from distribution plate to #4 from Back Wall harness.
- Connect wire #5 from the distribution plate to #5 from the Back Wall harness.



- Connect wire R1 from the distribution plate to R1 from the Right Wall junction box.



- Connect wire S3 from the distribution plate to S3 from the Bench Skirt.
- Connect wire #6 from the Back Wall harness to the Bench Skirt wire #6.
- Connect wire S1 from the distribution plate to the Bench Top wire S1.





**Electrical Connections (under bench - left side):**

- Connect wire L1 from the distribution plate to L1 from the Left Wall panel.
- Connect wire B1 from the distribution plate to B1 from the Back Wall panel.



- View of the finished connections.



- Locate the electrical switch on the black Master Control Box and ensure the switch is on.



- Use the buckles to latch the skirt to the left and right side walls.



- Bench top can now be fit into place. Bench must tuck under the back heater guard and then push all the way to the back wall.
- The Bench Top should fit down flush from front to back. It may be necessary to use the openings in the skirt to apply pressure forward or rearward on the skirt to allow the bench to drop into place.



## Ceiling (Box #1):

- Install 4 large Styrofoam packing squares on top of the Right & Left Wall panels. One block should be placed in the front portion and one toward the rear portion of each wall. These will be used to set the ceiling on.
- The ceiling can now be set in place on top of the Styrofoam blocks.



- Once the Ceiling panel is lined up directly above the Wall panels; insert the wires harnesses from the wall panels into the holes in the Ceiling panel.



**Note:** Position the cam locks on the top of the Left & Right Wall panels as shown above.

- Lower the Ceiling panel by removing the rear Styrofoam blocks first and leaving the front blocks until front wall installed. **Be sure not to pinch any wires under the Ceiling panel.**



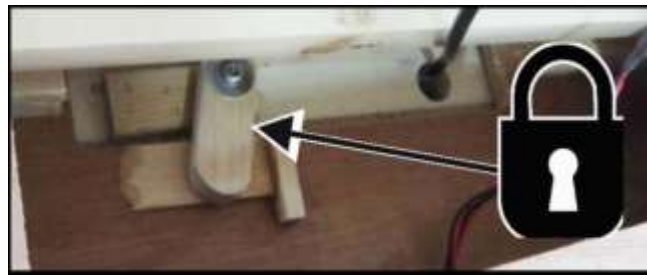
### Front Wall (Box #2):

- Start with the door and glass panel piece and move to the Floor panel slot.
- Place the Front Wall panel into the Floor panel slot.
- Have one person hold the door and glass panel, while another brings the last glass panel.
- While the left front glass piece is positioned, open the door to allow more work space.



**Note:** Secure the door from falling open and breaking while setting the Front Wall panel. It may be helpful to use your knee to help push in the Front Wall panel while lowering into place.

- Remove the foam blocks on the front corners, and place the glass panels in the slots in the ceiling. Make sure the ceiling fits tight and is flat and level.
- Turn the wood ceiling cam locks to lock the ceiling into place.



### Electrical Connections (inside the Ceiling panel-back right corner):

- Open all hatch doors on the ceiling to locate the necessary electrical plugs.
- Access the connectors and connect them according to the labels on the harness.
- Connect wire #4 from the Back Wall harness to the Ceiling wire #4.
- Connect wire #5 from the Back Wall harness to the Ceiling wire #5.
- Connect wire #6 from the Back Wall harness to the Ceiling wire #6.



### Electrical Connections (inside Ceiling-Left front corner):

- Near the Touch Screen harness in Ceiling connect Left Wall wire #3 to Ceiling wire #3.
- Connect Left Wall wire #7 to the Ceiling wire #7.
- Connect Left Wall wire F to Ceiling wire F.
- Connect Left Wall wire E to Ceiling wire E.



### Electrical Connections (inside the Ceiling-Right front corner):

- Connect the Right wall wire #7 to Ceiling #7 for valance lights.

### Sauna Room 120 Volt AC Power Cord:

- Plug the Sauna room power cord into the 20 amp 5-20R wall receptacle as noted in page 3.

*Note: It is important that the sauna be plugged into a dedicated outlet of the correct rating. Plugging your sauna into a shared circuit through can cause poor performance, circuit breaker tripping, or overheating of the circuit.*



## Deluxe Door Handles:

- Your sauna comes equipped with a deluxe door handle. Locate brown box (typically in the floor/ceiling carton)



- Step 1. Separate two pieces by loosening four set screws with Allen wrench provided.



- Step 2. Remove bolts and spacer from first handle piece. You will need a Phillips Screw driver.



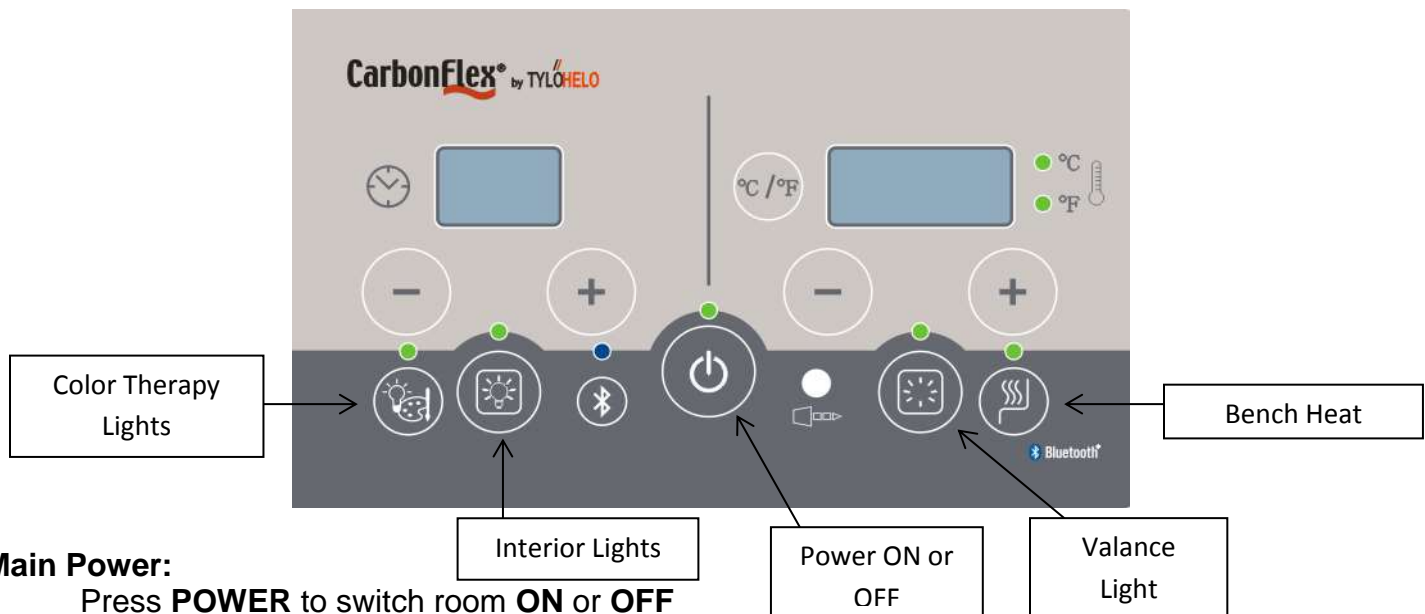
- Step 3. Ensuring gasket remains on both sides of door; reattach the bolt from outside the glass through to inside handle section. Make sure you have one plastic gasket on each side of the glass. Repeat for bottom of handle.
- Step 4. Once Secure and tight to inside handle section, tighten with a Phillips screw driver.



- Step 5. Attach exterior portion of door handle on to bolt section and tighten all four set screws with Allen wrench.



## Control Panel Instructions:



### Main Power:

Press **POWER** to switch room **ON** or **OFF**

### Timer Functions:

Press and hold “+” or “-” to set room operating time.

Increases time (5 minute increments) / Decreases time (5 minute increments)

### Temperature Functions:

Press to alternate between either C or F (C or F will light to indicate the units desired)

Press and hold + or - to set desired room temperature setting.

Pressing once will increase or decrease the desired setting in one-degree increments.

Once the desired room temperature is set, the desired temperature will flash three (3) times

After the fourth (4th) flash, the actual room temperature will remain displayed.

Press **Bench Heat** to turn **ON** or **OFF**

**Light Functions:** Note – All Lights will operate with main power selection **ON** or **OFF**.

Press **Interior Lights** to turn **ON** or **OFF**

Press **Valance Light** to turn **ON** or **OFF**

### Color Therapy Functions:

Press **Color Therapy Light** to activate a color light or sequence. The following details this sequence:

1st press – RED

2nd press – RED-GREEN

3rd press – GREEN

4th press – BLUE-GREEN

5th press – BLUE

6th press – BLUE-RED

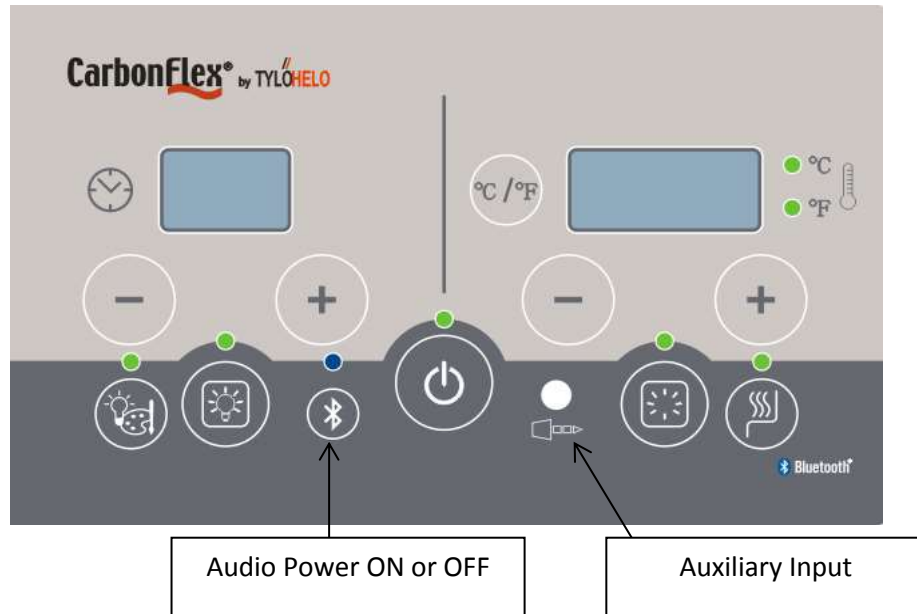
7th press – BLUE-RED-GREEN

8th press – Activates full rotation of all 7 color therapy in sequence noted above

9th press – Turns Color Therapy Functions OFF



## Audio System:



## AUDIO OPERATION

### Audio Power On

- Press **Bluetooth icon** to turn on or off audio system
- Blue LED indicates the audio system is operating.

### Bluetooth

- Bluetooth is always enabled when blue LED is glowing and Aux Input is not connected

### Auxiliary Input

- Insert 3.5 mm cable into the Aux Input
- Automatically disables Bluetooth input and enables Aux Input.

**WARNING** Apple will not guarantee your Apple product if used at operating temperatures of 32°F or below and 95°F and above. The recommended operating temperature is 32°F to 95°F to fall into the warranty. Check with any other device manufacturers for operation temperatures before using the device in the Sauna/IR Room.

## **How to Use Infrared Sauna:**

Avoid eating large meals and excessive alcohol intake before using Sauna.

Never smoke or drink alcohol or exercise inside of Sauna.

If you are taking any medications or under the care of a Physician, consult with them prior to Sauna usage.

Refer to Sauna Usage Warning signs located inside of Sauna Room

Prior to Sauna session, if possible before using Sauna, take a warm shower without drying.

Clothing is optional or wear loose fitting clothes. You may choose to sit or lie on a clean soft towel.

Set desired time & temperature.

The Sauna is producing the correct wavelengths to be absorbed into the body within 10-15 minutes of operation. It is not necessary to wait until the sauna is at maximum temperature, the absorption of wavelength is the same whether the room is in heat up or at set temperature.

Enter Sauna and relax, you may choose to enjoy music. Refer to the above Color Therapy System instructions.

Sit or lie on bench. Close the door and open the interior ceiling vent allowing for fresh air circulation.

Remain in the Sauna long enough to warm up and stimulate a mild perspiration. Typically that may occur in 10 – 15 minutes. This varies with every individual and their comfort level. Do not over do it!

Drink plenty of cool water or a refreshing healthy drink while using the sauna.

Leave the Sauna and cool down. Shower or bathe if possible to cool down and cleanse the skin.

Cool down period usually is the same length of time as the Sauna session.

Then reenter the Sauna for another 10-15 minute session.

Continue this process of alternating using the Sauna and Cooling Down for 3 to 4 cycles.

Length of time in the Sauna and cool off period varies and depends on the individual.

After final Sauna session and upon leaving the Sauna turn the Sauna off the timer if it is still operating.

Open the door and clean the Sauna walls, bench and floor areas with a soft clean damp cloth.

Enjoy a final shower or bath to cool down. Relax, in the special “after sauna glow” and you may choose to enjoy a healthy snack and cool drink.

## Additional Usage Warnings Located Inside Sauna Room



## Maintenance / General Cleaning

### Tips:

DO NOT USE: Alcohol or any strong Cleaning Chemicals

*Note: Some chemicals can damage clear finish and wood surfaces.*

- Interior: Perspiration and dirt may absorb into the wood, so periodic cleaning is needed, scrubbing benches, back supports, floor boards and walls with a stiff brush and mild detergent is normally sufficient. Light sanding is another option for cleaning interior surfaces.
- Exterior: Use a damp cloth of a mild soap mixed with warm water.

## Trouble Shooting Tips:

### a. Main Control Touch Pad Lights Not Lit:

Ensure electrical connections between ceiling and back and the ceiling and front wall  
Ensure power cord is plugged in to the proper power receptacle and dedicated circuit breaker  
Ensure main circuit breaker (house) is not tripped (power is found at the receptacle)  
Ensure the room main controller circuit breaker (under the bench) is not tripped and is ON

### b. Room not heating:

Ensure power cord is plugged in to the power receptacle  
Ensure main circuit breaker (house) is not tripped (power is found at the receptacle)  
Ensure the room main controller circuit breaker (under the bench) is not tripped and is ON  
Ensure room desired temperature is greater than room actual temperature (controller demands heat)  
Ensure that there is no time in the Delay Start timer if you do want to delay the start

### c. Door rubbing or binding:

Ensure that the room is assembled properly; walls and ceiling should all be interlocked.  
Ensure the floor is flat by using a level on the ceiling of the room. It may be necessary to use a small door or window shim to adjust the level under the floor.

---

**For additional assistance or service questions?**

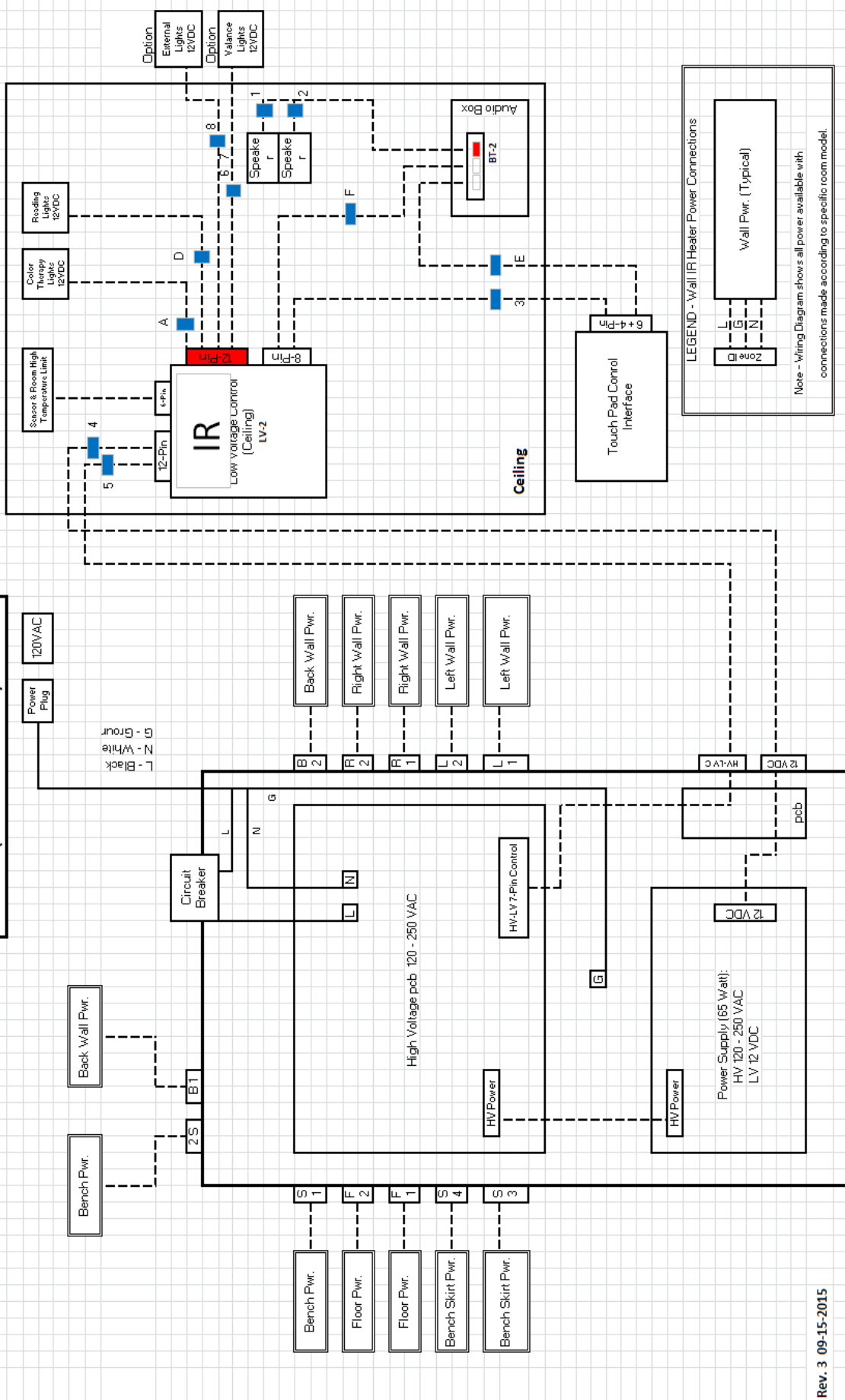
**Please do not hesitate contacting Saunatec/TyloHelo**

**Mon – Fri. 8AM – 5PM CST**

**1-888-780-4427**

[techsupport@tyloheloinc.com](mailto:techsupport@tyloheloinc.com)

**IR Room Wiring Diagram  
- Bluetooth Audio System -  
( ALL Series 120VAC )**



Rev. 3 09-15-2015

Saunatec warrants our Premium Line of Infrared Saunas (warranted products) against malfunction or defects in materials or workmanship for the period of time and in accordance with the conditions set forth below:

1. **Applicability.** This warranty applies when the warranted product (a) is installed in accordance with installation instructions provided, (b) is properly and reasonably maintained, and (c) has not been subjected to damage, misuse, or abuse, and (d) is for residential use only.

2. **Registration.** This warranty becomes valid only after the Limited Warranty Registration form, provided with this warranty, is completely filled in and signed by the original purchaser and mailed to SAUNATEC within sixty (60) days from the date of original installation. This warranty is non-transferable and shall extend only to the original purchaser.

3. **Duration of Warranty.** SAUNATEC or its authorized representative will provide parts to replace those with manufacturing or workmanship defects for a period of five (5) years from the date of original purchase, except when the warranted product is installed in commercial locations such as clubs, condominiums, apartments, spas or military facilities. In commercial locations, SAUNATEC or its authorized representative will provide parts to replace those with manufacturing or workmanship defects for a period of one (1) year from the date of original purchase for all components.

*Other electrical components are covered separately in the warranty (see other sections).*

**Lifetime limited warranty on the CarbonFlex™ emitters for Residential Use:** SAUNATEC or its authorized representative will provide parts to replace manufacturing or workmanship defects for the lifetime of the product from the date of purchase, including freight for the first five years. For the period beyond five (5) years, customer pays the freight. Warranty item may have to be inspected at the factory first before final approval.

**One Year Audio/Visual Warranty:** SAUNATEC or its authorized representative will provide parts to replace manufacturing or workmanship defects for a period of one year from the date of purchase.

**Limited Lifetime Infrared Sauna Room, Wood Components Warranty:** SAUNATEC will provide parts to replace those with manufacturing or workmanship defects for the lifetime of the product. Since the wood used in saunas has been kiln dried, a certain amount of expansion and contraction occurs in the wood in a sauna environment. This may result in minor cracks, which is considered normal and not covered under any warranty.

**Labor Warranty:** Additionally, for non-commercial locations in the United States SAUNATEC or its authorized representative will provide

reasonable labor to replace defective parts for a period of two (2) years from the date of original purchase and three (3) additional years if the product is returned to the factory.

4. **Warranty Work.** All warranty work must be (a) authorized by SAUNATEC before it is performed; and (b) performed only by authorized SAUNATEC representatives. This warranty shall not apply to any charges for parts or labor incurred before receiving approval by SAUNATEC.

5. **Return Authorization Number.** A return authorization number assigned by a SAUNATEC representative must accompany all returned parts. Parts, which are returned without a return authorization number, may not be repaired or replaced.

6. **Procedure.** Requests for repair or replacement, a return authorization number, or warranty information should be directed to SAUNATEC by calling toll-free 1-888-780-4427 or by writing to SAUNATEC, 575 EAST COKATO STREET, COKATO, MN, 55321. Defective product or parts returned for repair or replacement must be shipped prepaid to SAUNATEC at the above address. Shipping costs for return of replacement product or parts to the purchaser will be at the expense of the purchaser.

7. **Limitations, Exclusions, and Remedies.** There are no warranties, which extend beyond the descriptions of the face hereof. This limited warranty is in lieu of all warranties, expressed or implied, and of all other obligations or liabilities on the part of SAUNATEC. There shall be no implied warranty of merchantability. SAUNATEC neither assumes nor authorizes any person to assume for it any other obligation or liability in connection with the sale of its products.

Damages for breach of this warranty shall not exceed the lesser of the cost of repair or replacement. Repair or replacement shall be the exclusive remedy available to the purchaser.

Under no circumstances shall SAUNATEC be liable by virtue of this warranty or otherwise for any special, indirect, secondary, incidental, or consequential damage of any nature to any person or property arising directly or indirectly out of the use or inability to use a warranted product.

Some States do not allow limitations on how long an implied warranty lasts, or the exclusion or limitation of incidental or consequential damages, so the above limitations and exclusions may not apply to you.

8. **Disputes.** Any lawsuit alleging breach of this limited warranty shall be commenced within one year from the date of breach.

This warranty gives you specific legal rights, and you may also have other rights, which vary from State to State.



### LIMITED WARRANTY REGISTRATION FORM

Please fill out and return within 60 days of installation to: SAUNATEC, 575 EAST COKATO STREET, COKATO, MN 55321

The undersigned hereby acknowledges the receipt of SAUNATEC Limited Warranty and affirms that the date of purchase was \_\_\_\_\_ 20\_\_\_\_, further that installation of the equipment has been completed according to the SAUNATEC installation instructions furnished with the equipment and that I have read, understand and agree to the condition and terms of the SAUNATEC Limited Warranty in its entirety.

Name of Purchaser \_\_\_\_\_ Phone \_\_\_\_\_

Address \_\_\_\_\_ Model No. \_\_\_\_\_

City \_\_\_\_\_ St. \_\_\_\_\_ Zip \_\_\_\_\_ Serial No. \_\_\_\_\_

Purchaser's Signature \_\_\_\_\_

4210-501 G 05/25/11