

M600



**Piper**[®]

INDULGENCE MEETS PERFORMANCE



The perfect balance of performance and luxury, the M600 is the modern businessperson's plane. With unprecedented range, power, payload, and an obsession with safety, the M600 will exceed your aircraft expectations.



Photo by Chris Rose, courtesy AOPA.

SAFETY IS PRIORITY

With a passion for performance, the single-engine M600 turboprop emphasizes safety and functionality. The all-glass Garmin G3000 avionics suite is the most advanced safety equipment available today. A touchscreen-controlled flight deck puts intuitive navigation at your fingertips.

60/40 MODE AND ENHANCED MAP DISPLAY

No longer does the pilot need to sacrifice the scan from the primary view to fly the approach plates or look for upcoming way-points. With 60/40 Mode, all invaluable situational decisions remain right in front of the pilot. Included in the situational awareness package is the premiere option SurfaceWatch™.



SURFACEWATCH™

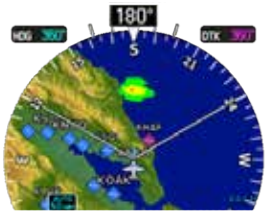
SurfaceWatch provides aural and visual alerts to help the pilot maintain situational awareness and avoid potential runway incursions/excursions during ground and air operations in an airport environment.

60/40



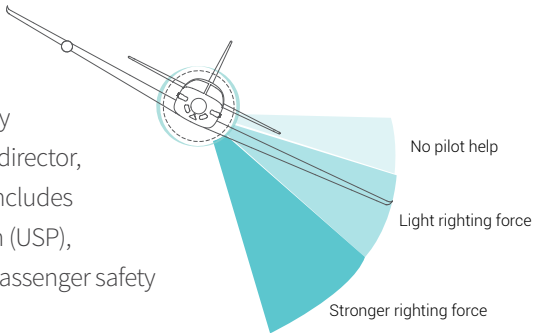
ENHANCED HORIZONTAL SITUATION INDICATOR (HSI)

The Enhanced Map HSI is a new feature designed to increase situational awareness by overlaying additional information onto the HSI display. Just as the HSI provides increased information compared to the directional gyro, the Enhanced Map HSI further improves the HSI by allowing greater information to be conveyed within the primary instrument scan. It can be used while in 60/40 Mode and supports overlays with combinations on Map, SafeTaxi data, Flight Plan, METARs, NEXRAD, Weather Radar, and more.



GFC WITH ENHANCED AUTOMATIC FLIGHT CONTROL SYSTEM

The fully integrated flight control system provides exceptional flight automation with a dual AHRS-based system. The system offers top safety features and incomparable performance, seamlessly integrating a flight director, autopilot, automatic trim and yaw damper into the G3000 suite. It also includes Electronic Stability Protection (ESP), Level Mode, Underspeed Protection (USP), Emergency Decent Mode, and Coupled Go Around, elevating pilot and passenger safety to the highest standards.



To learn more about additional safety features available on the M600, visit piper.com.

Seats/Lower Side Panel

Accent Color

Table & Accents

CALAIS INTERIOR

Seats/Lower Side Panel

Accent Color

Table & Accents

SEDONA INTERIOR

Seats/Lower Side Panel

Table & Accents

Seats/Lower Side Panel

FIRENZE INTERIOR

Headliner is standard in all M-Class models and color options.

ELEGANT AND FUNCTIONAL



Shown in Calais

Distinctive details and elegant accents set the interior of the M600 apart. Ergonomic, aesthetically styled seating for six makes extended travel more enjoyable. Digital cabin pressurization optimizes comfort and convenience. The interior of the M600 is sophisticated without sacrificing functionality.

SPECIFICATIONS

ENGINE

Pratt & Whitney Canada PT6A-42A
Horsepower: Flat Rated at 600 shp
TBO: 3,600 hours
Hot Section Inspection: 1,800 hours

PROPELLER

Hartzell 4-Blade | Constant Speed | Reversible
Diameter: 82 in | 208 cm

WEIGHTS

Maximum Takeoff Weight: 6,000 lbs | 2,722 kg
Maximum Ramp Weight: 6,050 lbs | 2,744 kg
Standard Equipped Weight: 3,730 lbs | 1,691 kg
Standard Useful Load: 2,320 lbs | 1,052 kg

SPEEDS

Max. Cruise Speed: 260 ktas | 482 km/h
VMO Speed: 250 kcas | 463 km/h

FUEL CAPACITY

260 US gal | 984 liters

RANGE WITH 45 MIN. RESERVE

1,300 nm | 2,407 km

MAXIMUM APPROVED ALTITUDE

30,000 ft | 9,144 m
For Airspace Requiring RVSM, limited to 28,000 ft | 8,534 m

TAKEOFF DISTANCE

Total Over 50 ft Obstacle: 2,350 ft | 716 m

LANDING DISTANCE

Total Over 50 ft Obstacle: 2,125 ft | 648 m

CABIN PRESSURIZATION

Maximum Cabin Differential: 5.6 psid

DIMENSIONS

Wingspan: 43 ft 2 in | 13.2 m
Height: 11 ft 4 in | 3.4 m
Length: 29 ft 10 in | 8.9 m

STANDARD FEATURES

Avionics

Garmin G3000 Avionics Suite with Autopilot, Enhanced AFCS, and Synthetic Vision:
Dual 12.1" PFDs, Single 12.1" MFD, Dual GTC 570 Touchscreen Cockpit Management Units, Dual GIA 63W NAV/COM/GPS, GEA 71 Engine and Airframe Interface, GFC 700 Autopilot with Enhanced AFCS (Advanced Safety Features: Automatic Level Mode (Blue Button), Electronic Stability Protection (ESP), Underspeed Protection (USP), and AFCS Coupled Go Around) and GMC 710 AP Controller, Dual GMU 44 Magnetometer Units, Dual GRS 77 AHRS Computers, GMA 36 Digital Audio Panel, Dual GDC 74 Air Data Computers, GTX 33 ES Mode S Transponder (ADS-B "Out" Compliant), GAE 43 Altitude Encoder, GWX 70 All Digital Weather Radar, Garmin FliteCharts, Garmin SafeTaxi, Aspen EFD 1000 Standby Flight Instruments, and Integrated Digital Cabin Pressurization

Other Equipment

Flight Into Known Icing (FIKI), PiperAire Air Conditioning, Hardwired Cockpit Bose A20 Headsets, Six USB Charging Ports (two cockpit, four cabin)

Interior

Calais, Sedona, or Firenze Premium Leather Interior, Electroluminescent Placards, Chrome and Wood Accents

PREFERRED PACKAGING

Piper is pleased to offer you bundled services with pricing advantages. Take the uncertainty out of option shopping and allow us to help guide you through the process.



AWARENESS PACKAGE

Jeppesen Chartview (one year subscription to Jeppesen PilotPak), GTS 855 Traffic Advisory System (ADS-B "In" capability) and TCAS 1, TAWS-B (Terrain Awareness and Warning System), GTX 33 ES (Second Digital Transponder)



WEATHER PACKAGE

GDL 69A SiriusXM Satellite Weather (includes Flight Stream), L3 WX-500 Stormscope



INTERNATIONAL PACKAGE

GSR 56 Iridium Transceiver, ADF: Becker RA3502 Remote ADF Receiver, GTX 33 D ES: Diversity Digital Transponder - with Dual Antennas (Required for European Operations - Replaces STD GTX 33 ES) BendixKing KN 63 Remote DME

All performance data and specifications are preliminary and subject to change.

Contact your dealer for pricing and further specifications.



Sun Jet Center

EXPECTATIONS ELEVATED

It has been said that having high expectations often leads to disappointment. We tend to disagree. Piper builds to the specifications of the perfectionist and the dimensions of a dreamer. Our exceptional products not only meet your expectations, but exceed them. Keep raising the bar – we'll meet you there.



All performance data and specifications are preliminary and subject to change.

Piper Aircraft, Inc. reserves the right to make changes, including, but not limited to, changes in specifications, materials, equipment, and/or prices at any time without prior notice. It is the responsibility of the pilot to conduct all operations in accordance with the approved Pilot's Operating Handbook, which is the only official source of data. © 2016 Piper Aircraft, Inc.

Piper Aircraft, Inc. | 2926 Piper Drive | Vero Beach | FL | 32960 | 772.299.2403

**Piper**[®]

piper.com | 1.866.359.7473