

MATRIX




Piper[®]

VALUE PROPOSITION



Synonymous with value, Piper builds quality aircraft that simplify your life. The Matrix is the only six-place unpressurized cabin class aircraft available today. Step into the affordable single-engine solution you've been looking for at a price our competitors can't touch. Welcome to the M-Class.



SUITE SUITED FOR YOU

The Matrix is the only piston aircraft to feature a standard 15" multi-function display, along with dual 10.4" primary flight displays. Performance and technology meet to marry satisfaction and safety in a comprehensive, intuitive cockpit.

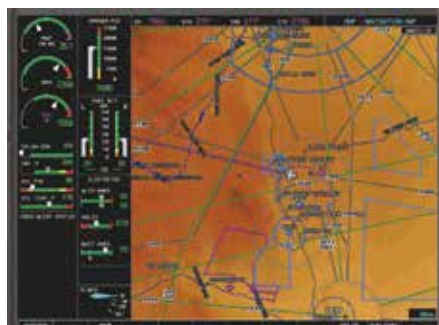
Primary Flight Displays (PFD)

Two high-resolution primary flight displays put the flight instruments in direct line of sight from both left and right seats without distracting parallax view.



Multi-Function Flight Display (MFD)

In the center of the panel, engine data, charts, traffic, weather, flight plans, menus, and more are displayed on the large format, high-resolution, 15" multi-function display. Garmin's legendary user-friendly interface makes the MFD simple to navigate and puts a wealth of information at the pilot's fingertips.

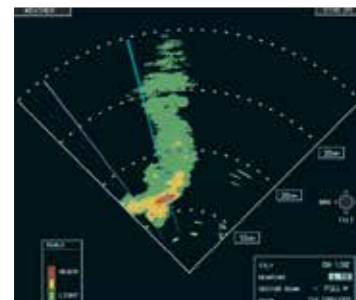


Garmin GFC 700

The fully integrated flight control system provides exceptional flight automation, including a dual AHRS-based system. The system offers top safety features and incomparable performance, seamlessly integrating a flight director, autopilot, automatic trim and yaw damper into the G1000 suite.

Weather Monitoring (Optional)

The Matrix offers the unsurpassed on-board radar capabilities of the optional Garmin GWX 68 digital color radar. The GWX 68 easily penetrates and reports back the weather ahead with its 6.5 kilowatts of power. In addition, the optional GDL 69A provides datalink weather with NEXRAD radar, winds aloft, METARs, TAFs, lightning, icing, and other information available in the U.S., with a subscription to XM WX Satellite Weather.



Synthetic Vision (Optional)

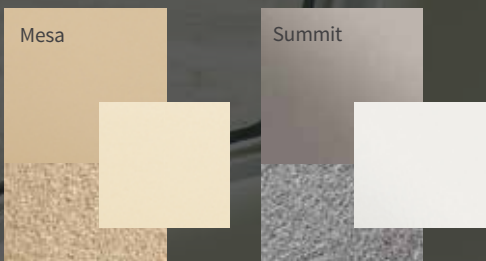
The optional Garmin Synthetic Vision Technology takes situational awareness to a new level, regardless of what can or cannot be seen out the windshield. Obstacles, terrain, water, and airports are graphically depicted.



To learn more about additional safety features available on the Matrix, visit piper.com.

Headliner is standard in all M-Class models and color options.

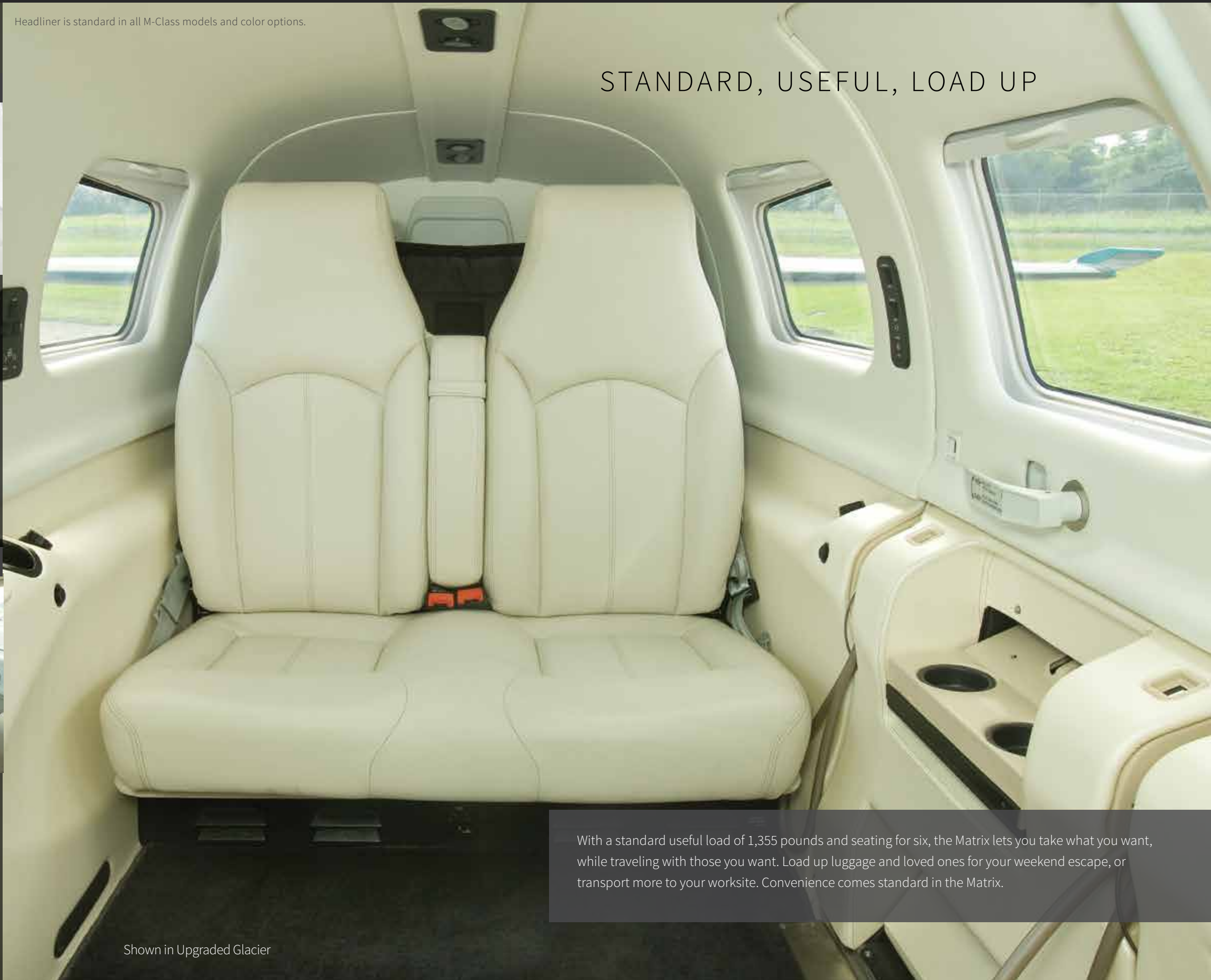
STANDARD SELECTION



UPGRADE OPTIONS



STANDARD, USEFUL, LOAD UP



Shown in Upgraded Glacier

With a standard useful load of 1,355 pounds and seating for six, the Matrix lets you take what you want, while traveling with those you want. Load up luggage and loved ones for your weekend escape, or transport more to your worksite. Convenience comes standard in the Matrix.

SPECIFICATIONS

ENGINE

Turbocharged Lycoming TIO-540-AE2A
Horsepower: 350 hp
Number of Cylinders: 6
TBO: 2,000 hours

PROPELLER

Hartzell 3-Blade | Composite | Constant Speed

WEIGHTS

Maximum Takeoff Weight: 4,340 lbs | 1,969 kg
Maximum Ramp Weight: 4,358 lbs | 1,977 kg
Standard Equipped Weight: 3,003 lbs | 1,362 kg
Standard Useful Load: 1,355 lbs | 615 kg

MAXIMUM CRUISE SPEED

213 ktas | 395 km/h

FUEL CAPACITY

120 US gal | 454 liters (Usable)

RANGE WITH 45 MIN. RESERVE

1,343 nm | 2,487 km

MAXIMUM APPROVED ALTITUDE

25,000 ft | 7,620 m

TAKEOFF DISTANCE

Ground Roll: 1,087 ft | 331 m
Total Over 50 ft Obstacle: 2,090 ft | 637 m

LANDING DISTANCE

Ground Roll: 1,020 ft | 311 m
Total Over 50 ft Obstacle: 1,968 ft | 600 m

DIMENSIONS

Wingspan: 43 ft | 13.1 m
Height: 11 ft 4 in | 3.4 m
Length: 28 ft 11 in | 8.8 m

STANDARD FEATURES

AVIONICS

Garmin G1000 Avionics Suite with Autopilot:
Dual 10" PFDs, Single 15" MFD, Dual GIA 63W NAV/COM/GPS, GFC 700 Autopilot with GMC 710 AP Controller and Yaw Damper System, Dual GRS 77 AHRS Computers, GCU 476 Keypad, Garmin FliteCharts, Garmin SafeTaxi, GMA 347 Audio Panel, Dual GDC 74A Air Data Computers, GTX 33 ES Mode S Transponder, and Standby Flight Instruments

OTHER EQUIPMENT

PiperAire Air Conditioning, Hardwired Cockpit Bose A20 Headsets, One Matrix Pilot Initial Training Course, Supplemental Oxygen System, 110 Volt AC Power Outlet

INTERIOR

Mesa or Summit Interior



PREFERRED PACKAGING

Piper is pleased to offer you bundled services with pricing advantages. Take the uncertainty out of option shopping and allow us to help guide you through the process.



ASSURANCE PACKAGE

SVT - Garmin Synthetic Vision, Speed Brakes, AMSAFE Pilot & Co-Pilot Air Bag Seatbelts



AWARENESS PACKAGE

Jeppesen ChartView (one year subscription to Jeppesen PilotPak), TAWS-B (Terrain Awareness and Warning System), KTA 870 Traffic Advisory System



WEATHER PACKAGE

GWX 68 Weather Radar, GDL 69A XM WX Satellite Weather (includes GRC 10 remote), Flight Into Known Icing (FIKI), L3 WX-500 Stormscope



INTERNATIONAL PACKAGE

ADF - BendixKing KR 87, DME - BendixKing KN 63

Contact your dealer for pricing and further specifications.

A Piper Matrix aircraft is parked on a lush green grassy field. In the background, several cowboys on horseback are gathered, suggesting a rural or equestrian setting. The sky is a clear, bright blue, and the overall scene is bathed in the warm, golden light of late afternoon or early morning. The aircraft is white with dark accents and is positioned in the lower-left to center of the frame. The cowboys and horses are located in the middle ground to the right of the plane. The background consists of a dense line of trees under a vast, open sky.

STEP INTO THE PIPER FAMILY

Engage in the life waiting for you. The Piper Matrix is your corridor to more. The seamless transition between our aircraft makes the Matrix the logical plane to step into, with the option of stepping up as your aviation needs evolve. Fall in love with the M-Class, starting here.



Piper Aircraft, Inc. reserves the right to make changes, including, but not limited to, changes in specifications, materials, equipment, and/or prices at any time without prior notice. It is the responsibility of the pilot to conduct all operations in accordance with the approved Pilot's Operating Handbook, which is the only official source of data. © 2016 Piper Aircraft, Inc.

Piper Aircraft, Inc. | 2926 Piper Drive | Vero Beach | FL | 32960 | 772.299.2403

Piper[®]

piper.com | 1.866.359.7473