

Imagine... a look that lasts forever!



Siding Systems

**NOVIKSHAKE™ RS8
ROUGH SAWN 8' SHAKE**

INSTALLATION GUIDE



NOVIKSHAKE™ RS8 - ROUGH SAWN 8' SHAKE

INSTALLATION GUIDE

GENERAL INFORMATION

CAUTION: REMEMBER THAT POLYMER UNDERGOES EXPANSION/CONTRACTION DUE TO VARIATIONS IN TEMPERATURE. THE FOLLOWING INSTRUCTIONS WILL ALLOW FOR THE EXPANSION / CONTRACTION OF THE MATERIAL.

1-Always begin the installation at the lowest part of the structure, from left to right.

2-Always nail through the installation holes. These holes include a polymer film, which permits for precise centering of the nail, allowing the expansion and contraction of the material. Each complete panel must be nailed through the center hole, at both extremities and have a minimum of 7 nails in the nailing channel at maximal intervals of 16"(40,64cm) or less (Figure 1). If panels are installed on a furring wall, furring strips should be at 8"(20,32cm) center to center and a furring strip is required behind each nail. Always use non-corrosive nails or screws with a head of 0.4"(1cm) in diameter and a body of 0.150"(0,38cm) in diameter and penetrate a minimum of 1 1/4"(3,18cm) into a solid surface.

3-Never hammer the nails in completely; leave a gap of 1/16"(0,16cm). The stoppers located around the holes stop the hammer from driving the nails in too far, and provides the required gap (Figure 2).

4-Make sure that all pieces are properly joined together (push firmly upwards on the panel making sure that the insertion is complete) (Figure 3).

5-When using finition trim (i.e. NovikTrim1, J-trim, etc.) leave a gap of 1/4"(0,64cm) between the trim and the siding (Figure 4). The required opening for finition trim is 1"(2,54cm).

Note:

- To cut the material, it is recommended to use a circular saw with a finishing blade.
- Keep the R-E-L number of your products (ex: REL-123456) for future references.

Figure 1

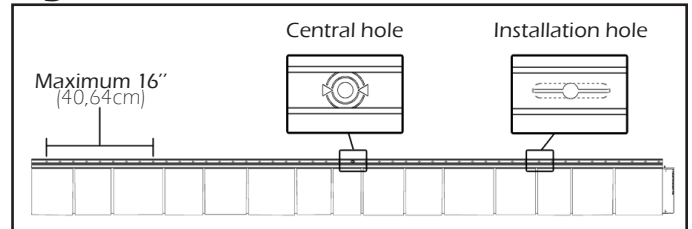


Figure 2

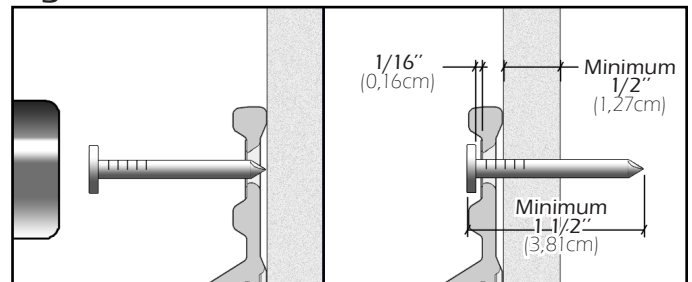


Figure 3

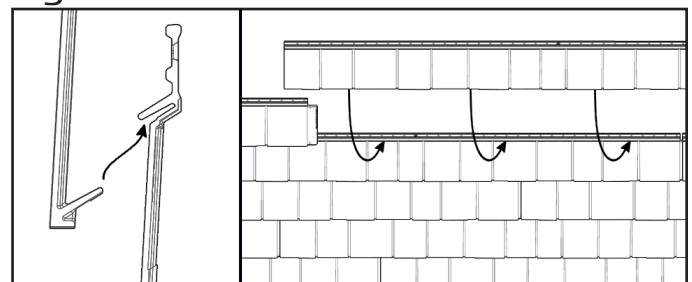
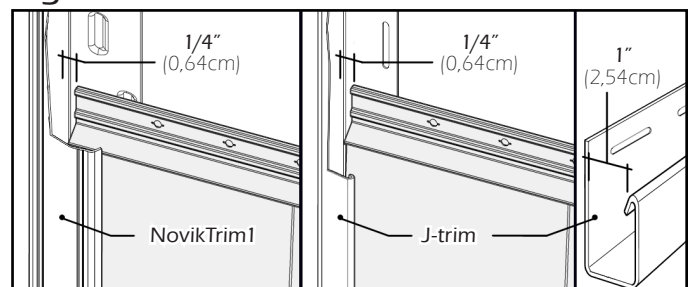


Figure 4



Some elements of the image above were partly removed to facilitate understanding.

NOVIKSHAKE™ RS8 - ROUGH SAWN 8' SHAKE INSTALLATION GUIDE

INSTALLATION STEPS

1-First install the starter strips at the lowest point of the structure. Make sure that the horizontal starting line is perfectly leveled and square with the wall. Leave a 1" (2,54cm) gap at each end of the wall when using decorative corners (1). If a floor is against the wall you must leave a gap of 5/8" (1,59cm) between the starter and the floor (2). If there is no floor, starter strips should be flush with the base of the wall. Nail the starter strips through the nailing holes at maximal intervals of 8" (20,32cm) or less. Do not forget to nail in the center hole (3). Install the next starter strip by sliding it leftward to the stopper in the previous one and nail it as mentioned above (4)(Figure A).

2-When using decorative corners, cut the left side of a panel in a straight line, insert panel into the starter strip and nail the panel at 2 5/8" (6,67cm) from the wall edge. When using outside corner or J-trim, cut the left side of a panel in a straight line, insert panel into the starter strip and slide it in the trim. Leave a space of 1/4" (0,64cm) between the inside wall of the trim and the siding (Figure B). Measure the wall length to determine where to cut your first panel in order to avoid having a very small piece at the right end of the wall. Be sure to align adjacent walls.

3-On each panel, hammer a nail into the center hole of the panel, this will ensure even movement of panel in both directions during expansion/contraction. Also hammer a nail into the last hole on both ends and 4 other nails into nailing channel (Figure C). Each full length panel should be secured with a minimum of 7 nails. If the panel is installed on a furring wall, a furring strip is required behind these holes.

- N.B.: If a panel piece does not have the initial center hole in the middle, drill a new center hole of 1/8" (0,32cm) diameter at the same height as the other installation holes.

Figure A

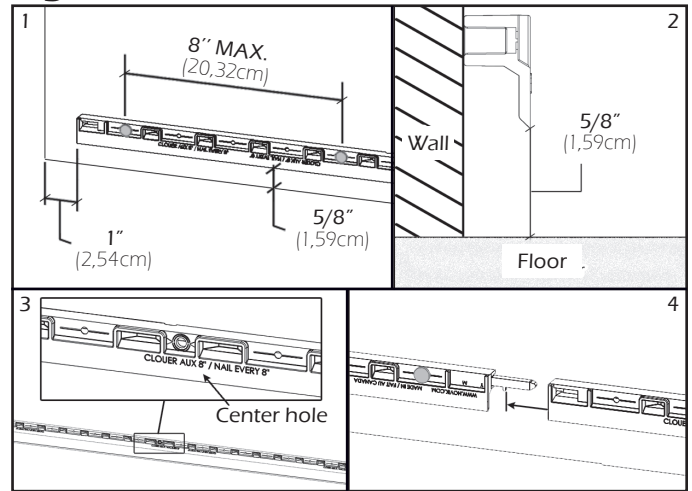


Figure B

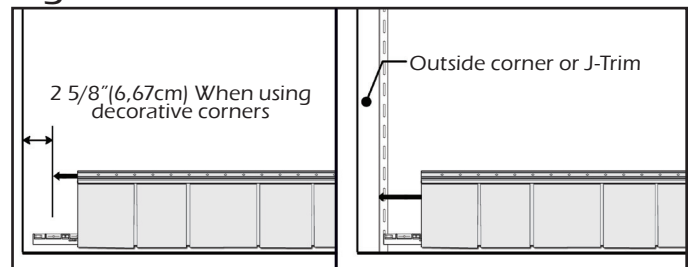
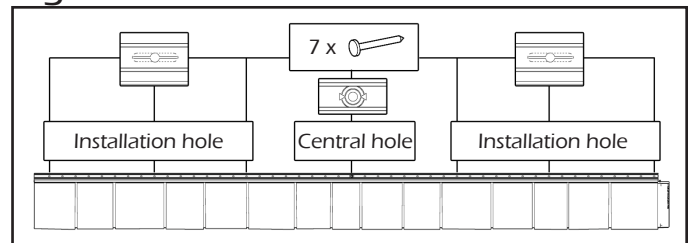


Figure C

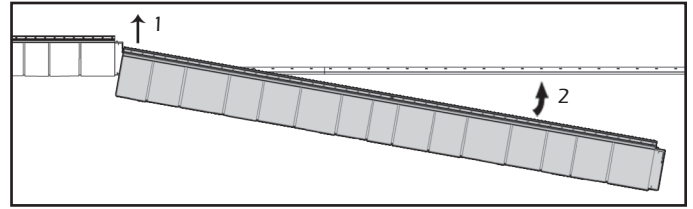


NOVIKSHAKE™ RS8 - ROUGH SAWN 8' SHAKE INSTALLATION GUIDE

INSTALLATION STEPS (CONTINUATION)

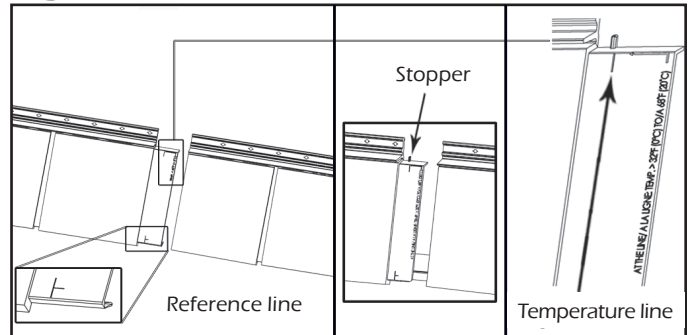
4-Insert the next panel into the starter strip and slide the left side over the previous panel closest to the desired position (1), then rotate the panel upwards (2) (Figure D). If installed at outdoor temperature above 68°F(20°C), slide the panel until the stopper. A reference line located on the bottom right end of the panel allows to validate positioning of the panel. If installed at outdoor temperature between 32°F(0°C) and 68°F(20°C), adjust panel to the temperature line (Figure D.1). If installed at outdoor temperature below 32°F(0°C) position the panel slightly right (1/16"(0,16cm)) of the 32°F(0°C) and 68°F(20°C) line. Once positioned, nail the panel as previously indicated. Redo this step until the end of the row.

Figure D



5-Repeat steps 2 to 4 for the subsequent rows until the last row, alternating the cutting distance of the first panel of each row. Hook the lower panel hooks with the top hooks of the row below and push firmly upwards on the panel making sure that the insertion is complete. (Figure E)

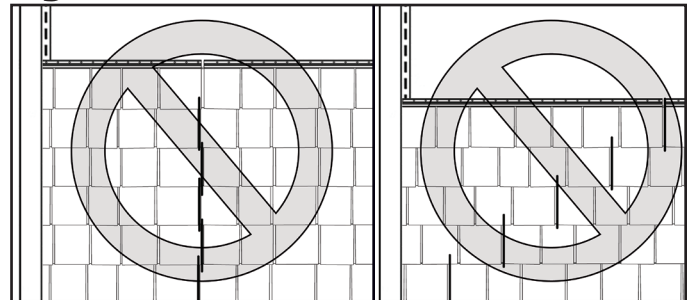
Figure D.1



6-For the last row or places where you may need to attach siding other than in installation holes at a concealed spot on the panel use a knife to create new 1"(2,54cm) slots (Figure F); the slot must be wider than the nail but not as wide as the nail head. Although not set in installation holes, this type of cutting will allow the expansion/contraction movement of siding.

-N.B.: For proper installation & optimal appearance, shim as required to adjust the angle of the last row.

Figure E

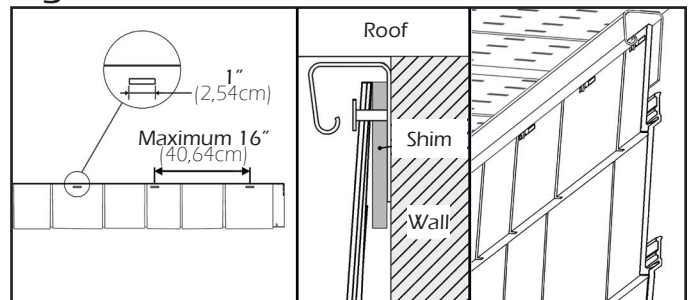


Result to be avoided.

Pay attention to vary the cutting distance of the first panel at every row so as not to create repetition, stair or align the panel joints between the rows.

Note: Do not set accessories directly on the siding. The fasteners must be fixed on a solid surface. If you need to set accessories on siding, at a concealed spot on the panel create a new 1"(2,54cm) slot larger than the nail body but smaller than the nail head to permit expansion/contraction of siding.

Figure F



NOVIKSHAKE™ RS8 - ROUGH SAWN 8' SHAKE INSTALLATION GUIDE

DECORATIVE CORNERS INSTALLATION

1-The installation of corners begins once you have completed two adjacent walls.

-N.B.: For proper installation & optimal corner appearance, make sure that rows of adjacent walls are at 2 5/8" (6,67cm) from corner wall and at an equivalent height.

2-The corner is adjustable as the height of the siding shingles varies. While installing, slip the two external hooks (at rear of part) under the starter strip (A). *For the first row only, you may have to cut the two internal hooks to avoid interference with the starter strip.* Push the corner upwards on siding shingles until proper fit (B). Nail into slots at the top (Figure G).

3-For all the other corners, insert the two internal hooks into the two openings (A). Ensure they are locked in place by pushing firmly near hooks to fully engage the corners. Push corner upwards on siding shingles until proper fit (B). Nail into the slots at the top (Figure H).

4-For the last corner only, cut excess from part. On each side of the corner, make a hole wider than the shaft of the nail, but smaller than the head. Affix a nailing strip behind these locations to fasten corners firmly. Fold back the top of the corner and nail it down. (Figure I)

INSTALLATION TIP (INSIDE CORNERS)

1-Many solutions are possible to finish an inside corner: inside corner post (A), two J-trims (B) or two NovikTrim1 (C) (Figure J). It is important to seal the inside corner of the wall prior to installation the trims.

Figure G

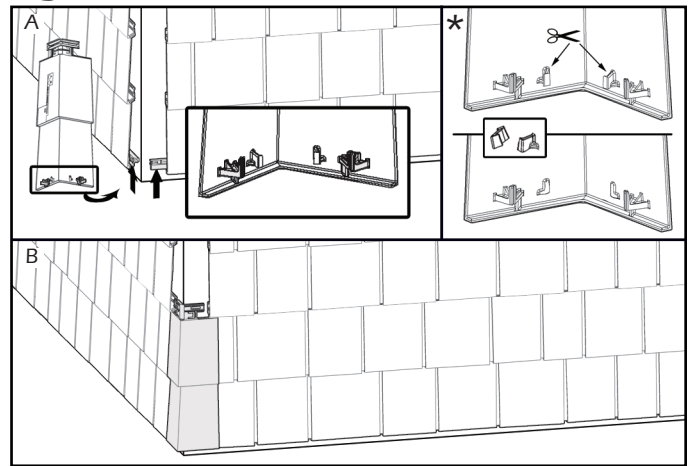


Figure H

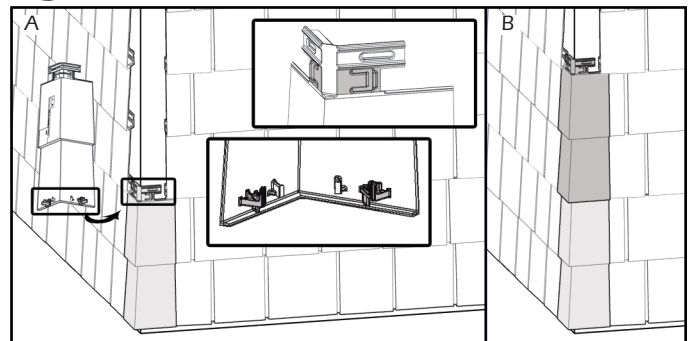


Figure I

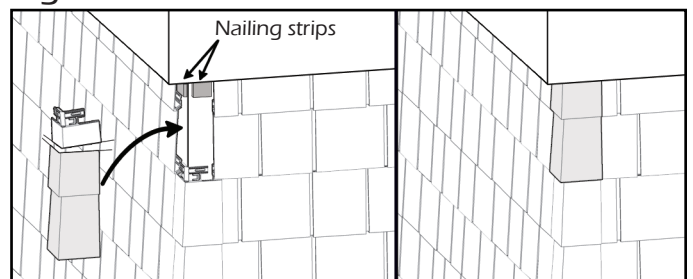
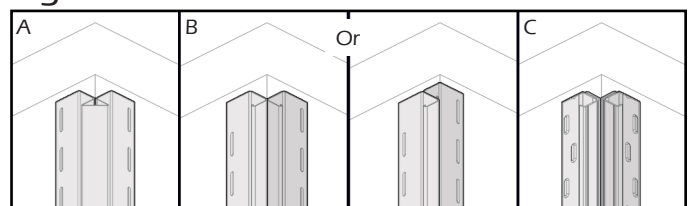


Figure J



For details, see the respective installation guide of each product.