



# Health & Social Care Training Directory

January  
2016

# Introduction

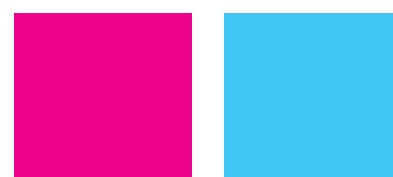
Welcome to the our CareShield training directory.  
CareShield take great pride in providing high  
quality training solutions for health and social care  
organisations.

We specialise in this sector as we are confident that our training approach provides staff with the skills and knowledge to help improve the quality of lives of the patients and clients they work with. Ultimately, we believe that we help to make the lives of all the people that we touch a little more extraordinary than they otherwise would be. In addition, we are passionate about empowering employees at every level to learn, achieve, and be the very best they can be.

The training courses listed in this directory are only one piece of your workforce development strategy. When combined with our brand new learning management system 'Myrus' and its powerful reporting and collaboration features, a CareShield project really comes to life and yields real, visible results.

I'm proud to say that last year we managed the training of over a quarter of a million health and social care workers and this number increases every day. We very much look forward to working with you and welcoming you in to the CareShield community.

Christian Greenshaw  
Chief Executive Officer





## Training Categories

Our training directory is split in to three sections in order for you to easily find courses that are relevant to your employees.

There is also a complete index of all of our courses at the back of this directory.

- [Core skills training](#), recommended for all employees in the health and social care sector. This section begins on [page 4](#).
- [Care training](#) for adult social care workers and healthcaresupport workers. This section begins on [page 20](#).
- [Healthcare training](#) for nurses, paramedics and GPs. This section begins on [page 40](#).

## Quality Focused Organisation

CareShield are endorsed by AIM Awards, an [Ofqual approved awarding organisation](#). We have been recognised as a Quality Focused Organisation. This means you can benefit from:

- Assurance that our courses have been [carefully designed and planned](#).
- Confidence that a course has been through our [quality assurance processes](#).
- A certificate and accredited [CPD points](#) on completion of a course.
- Our commitment to [continuous development and improvement](#).





# Core Skills Training Courses

January  
2016



## **Change the mindset that employees need to complete Core Skills training to the mindset that they want to do it.**

Core Skills courses are designed to give learners an awareness and understanding of the values and procedures that are required to work effectively. These course titles are recommended for everyone working in the health and social care sector.

CareShield core skills training courses are specifically designed for people who work in a health or social care environment. As specialists in this sector, our tailored content is relevant to learners, is more engaging and leads to better knowledge retention compared to generic training. In turn, this leads to improved quality of care for patients and clients.

Our business development executives offer expert advice on regulatory requirements as well as course titles which are appropriate for your employees.

## Core Skills Training

Adult Life Support (Basic)	7
Adult Life Support (Intermediate)	7
Allergen Awareness	7
Adult Life Support (Basic), Manual Handling, Moving & Positioning People	8
Anaphylaxis & Adult Life Support	8
Business Writing	8
Child Protection	8
Complaints Handling	10
Conflict Resolution	10
Control of Substances Hazardous to Health (COSHH)	10
Data Protection	10
Display Screen Equipment	11
Equality and Diversity	11
Equality and Diversity for Managers	11
Fire Safety	11
Fire Warden for Care	13
First Aid	13
Food Safety	14
Food Safety for Catering (Level 2)	14
Food Safety for Support Workers	16
Health and Safety Awareness	16
Health and Safety Legislation	16
Lone Worker	17
Managing Distressing Behaviour in the Workplace	17
Manual Handling Objects	17
Mentorship	18
Nutrition Awareness	18
Reporting of Injuries, Diseases and Dangerous Occurrences Regulations (RIDDOR) 2013	18



## Adult Life Support (Basic)

eLearning - 30 mins - CSEB012

Skills Workshop - Half day - CCFD012

This course will provide the learner with an awareness of procedures around basic life support. The content is based closely on the relevant sections of the First Aid Manual, 9th Edition from St John Ambulance, St Andrew's Ambulance association and the British Red Cross.

### Learning Outcomes:

- Understand basic life support requirements in adults.
- Understand the principles that underpin basic life support in adults.
- Know the circumstances under which resuscitation is performed.
- Know the importance of early intervention.
- Be aware of the different types of cardiopulmonary arrest.
- Be aware of how to manage a choking patient in line with current national guidelines.
- Be aware of the steps to take in order to place a patient in the recovery position.

## Adult Life Support (Intermediate)

Skills Workshop - 1 day - CCFE016

The adult basic life support course can be upgraded to an intermediate life support course (ILS).

This one-day course will equip learners with the theoretical and practical skills required to practise intermediate life support in adults.

### Learning Outcomes:

This 1-day workshop will include the content from the basic life support course with additional inclusions as follows:

- Identification of cardiopulmonary arrest and use of automated external defibrillation (AED) with practical session using AED training module and manikin.
- More advanced airway management.

## Allergen Awareness

eLearning - 30 mins - CSEB017

The Food Information for Consumers Regulation (EUFI) stipulates that all allergens must be clearly emphasised on food labels. Consumers have the right to know what ingredients have been used in their meals. This is especially important in care homes where service users and their families may ask any member of staff to list the ingredients of meals that they are served in a care home. All care home employees must be able to answer these queries and/or direct their attention to where they can find these answers.

### Learning Outcomes:

- Be aware of your duties and responsibilities surrounding allergens in a care home.
- Be aware of the list of 14 major food allergens.
- Be aware of what to do in the case where a service user displays the symptoms of a food allergen reaction.
- Be aware of the information you should provide to a service user and/or visitors if you are asked about the ingredients of a dish.
- Be familiar with the foods and or drinks where the 14 allergens may be found.
- Be familiar of how allergens can affect the body, both internally and externally.
- Be aware of how best to prevent an allergic food allergy.
- Be familiar with the symptoms of anaphylaxis and know how to get help for someone displaying these symptoms.



## **Adult Life Support (Basic), Manual Handling, Moving & Positioning People**

Skills Workshop - 1 day - CCFE013

An excellent opportunity to update your skills in these areas in one intensive day.

### **Learning Outcomes:**

- The role of a first aider.
- How to maintain a safe environment.
- Perform primary and secondary survey.
- Summon help where appropriate.
- Assess a collapsed patient.
- Place someone in the recovery position.
- Effectively perform cardiopulmonary resuscitation on an adult casualty.
- Review the skills required to perform adult basic life support, including chest compressions, mouth-to-mouth ventilation or use of face mask.
- Demonstrate actions for choking emergencies.
- Legislation relating to Manual Handling – Health & Safety at Work Act 1974 and Manual Handling Operations Regulations (MHOR) 1992.
- Current guidance on safe practice.
- ‘Bad practices’.
- Spinal mechanics and back care.
- Risk assessment.
- Safe load management.
- Applying principles to lifting, lowering, pulling & pushing, carrying and supporting.
- Principles of safe handling of people.

## **Anaphylaxis & Adult Life Support**

eLearning - 90 minutes - CCEB018

Skills Workshop - Half day - CCFD018

This course will provide an overview of anaphylaxis; its causes, symptoms and treatment. It will then describe how to perform adult basic life support. This programme is suitable for any one who would benefit from an understanding of anaphylaxis and adult basic life support.

### **Learning Outcomes:**

- Understand the physiology and triggers of anaphylaxis, and management.
- Understand how to perform adult basic life support in accordance with UK Resuscitation Council Guidelines.

## **Business Writing**

eLearning - 40 minutes - CSEB026

This course is designed to give the learner an understanding of writing styles for a variety of audiences. This course will provide the learner with information on writing effective reports, writing for online publications and how to avoid the common email etiquette mistakes prevalent in the corporate world.

### **Learning Outcomes**

- Five key lessons of effective report writing.
- Differentiate between different styles of writing for varying audiences.
- Understand how presentation and structure is dependant on purpose.
- Be aware that your organisation may have its own writing standard.
- The importance of consistency.
- The correct use of punctuation in writing.
- Be aware of the importance of email etiquette in an organisation as a means of achieving business goals and objectives.

## **Child Protection**

eLearning - 50 minutes - CSEB036

On completion of this module the learner will be able to identify the different types of abuse, recognise the signs and indicators of abuse and understand how to respond to a disclosure of abuse.

### **Learning Outcomes:**

- Recognise the key factors in emotional abuse.
- Be aware of the consequences of emotional abuse.
- Recognise possible signs of neglect.
- Recognise the specific issues when dealing with the abuse of disabled children.
- Know the actions which should be taken if there are concerns about harm, abuse and neglect.
- List the key signs that indicate physical abuse.
- Know the key points with faced with a disclosure of abuse.
- Understand the requirement for safe working practices.
- Understand the main elements of the Children's Act 2004.
- Be aware of the organisations who provide support in relation to your job role.





**"I found that I didn't know as much as I thought! This unit has helped a lot. Very enjoyable too. It was clear and easy to follow."**

**"A very informative module. It was helpful to refresh my knowledge. I enjoyed this training a lot, thank you."**

*Learner Feedback  
Adult Life Support (Basic)*

## Complaints Handling

eLearning - 80 minutes - CSEB048

In this course, learners will study effective complaint handling. The course is designed to provide the learner with the skills and strategies for managing complaints from patients, service users or relatives effectively and efficiently.

### Learning Outcomes:

- Be aware of any existing feedback and complaints procedures in accordance with agreed ways of working.
- Understand what can and cannot be done within an individual's role in handling feedback and complaints and how you respond.
- Be aware of who to ask for advice in handling feedback and complaints.
- Recognise the importance of learning from feedback and complaints to improve the quality of service.

## Conflict Resolution

eLearning - 45 minutes - CSEB049

In this course learners will gain an understanding of the background and risks associated with conflict resolution. Employees will learn skills to assess and manage personal safety risks. They will also learn how to manage their own verbal and non-verbal behaviour in order to calm aggressive patients.

### Learning Outcomes:

- Understand the effects of behaviour on others in the care setting.
- Be aware of the differences between physical and non-physical assault.
- Define the term conflict.
- Be aware of the typical behaviours of people who are suffering a distress reaction.
- Understand the factors that can contribute to a distress reaction.
- Understand the differences between a proactive and a reactive response.
- Understand the importance of body language in helping to reduce the person's hostility.
- Be aware of the basic safety precautions to take when dealing with a person suffering a distress reaction.

## Control of Substances Hazardous to Health (COSHH)

eLearning - 45 minutes - CSEB053

In this course the learner will develop an awareness of COSHH in the workplace. The learner will also become familiar with the legislative requirement which governs COSHH requirements.

### Learning Outcomes:

- Identify hazardous substances and materials that may be found in the work setting.
- Know that substances can be divided into hazardous and non-hazardous materials.
- Be aware of safe practices for, storing hazardous substances, using hazardous substances and disposing of hazardous substances and materials.
- Know that COSHH applies to toxic, harmful or irritant substances in the workplace.
- Be aware of the 1974 Health and Safety at Work Act regulations surrounding COSHH.
- Know how hazardous substances can get into the body.
- Understand the difference between acute and chronic effects.
- Be aware of the negative and positive effect of a hazardous substance.

## Data Protection

eLearning - 40 minutes - CSEB055

All employees who have access to personal data in the workplace are required by law to adhere to Data Protection principles.

### Learning Outcomes:

- Be familiar with the legal framework of data protection.
- Understand what personal data means.
- The principles of the Data Protection Act 1998.
- Know that there are eight principles which govern personal data.
- Understand ways to keep and maintain personal information safe.

## Display Screen Equipment

eLearning - 50 minutes - CSEB064

This course has been designed for learners who use display screen equipment as part of their daily routine. Learners will become familiar with the correct workstation and laptop setup. They will identify the bad work practices and habits that are not conducive to their health when working with display screen equipment.

### Learning Outcomes:

- Be aware of legislation which pertains to display screen equipment.
- Be aware of the Health and Safety (Display Screen Equipment) requirements.
- Understand the term VDU.
- Understand the term WRULD.
- Be aware of the factors affecting WRULD.
- Be familiar with the key characteristics of WRULDS.
- Be familiar with the correct workstation layout.
- Be aware of how to work correctly with a laptop.

## Equality and Diversity

eLearning - 40 minutes - CSEB080

This course has been updated to incorporate the Equality Act 2010. It has been developed to provide staff with an introduction to diversity in the workplace, and an understanding of how other people and cultures should be respected. This course is suitable for all levels of staff. The aim is to ensure that the learner gains an awareness of equality, diversity and care values, and how anti-discriminatory practice underpins individual care.

### Learning Outcomes:

- The key principles of the Equality Act 2010.
- Be familiar with the nine protected characteristics.
- Explain why equality and diversity are important.
- Understand how making assumptions about individuals can be wrong.
- Know how to work in ways that support equality and diversity.
- Know how to respond to behaviour that is discriminatory.
- Know how legislation and guidelines support equality and diversity.
- Know how to respond to behaviour that is discriminatory.

## Equality and Diversity for Managers

eLearning - 50 minutes - CSEB081

This course will give the learner a more in-depth understanding and knowledge of equality and diversity issues from a managerial perspective. It is recommended that the learner complete the level 1 'Equality and Diversity' course to have an awareness of equality and diversity issues.

### Learning Outcomes:

- Know the importance of equality and diversity.
- Understand how a diverse workforce will complement an organisation.
- Understand the different types of discrimination.
- Be aware of best practice in recruitment.
- Be aware of the consequences for an organisation if staff are not aware of diversity issues.
- Be aware of the law and legislation relating to equality and diversity.

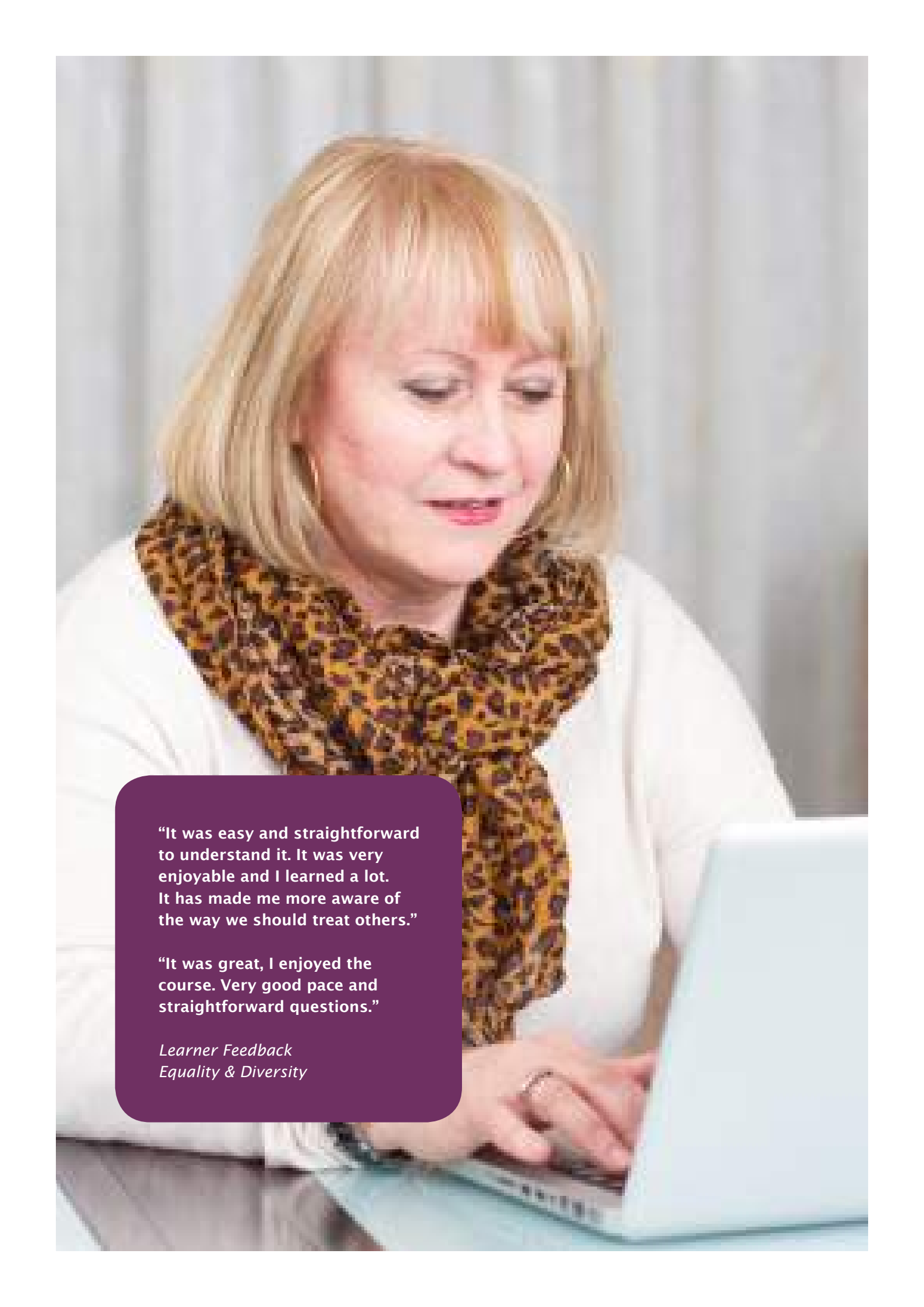
## Fire Safety

eLearning - 45 minutes - CSEB085

This course will provide the learner with an awareness of employee and employer responsibility in relation to fire safety in the workplace. The learner will develop an understanding of how fire spreads, how to react to a fire and follow local procedures.

### Learning Outcomes:

- The legal responsibility the Regulatory Reform (Fire Safety) Order places on employees to help prevent fire.
- Hazards and risks associated with fire.
- The requirements of a fire safety risk assessment.
- Understand emergency procedures to be followed in the event of a fire in the work setting.
- Be aware of what is required to start a fire.
- Understand how fire can spread.
- The importance of maintaining clear evacuation routes at all times.
- Recognise potential ignition sources.
- Understand how fire risk is controlled.
- Understand the principles and practice of fire safety management at work.
- Understand the role of the responsible person.
- Know what actions to take if you discover fire.
- The PASS technique when using a fire extinguisher.
- Know what kind of extinguisher can be used on each category of fire.



"It was easy and straightforward to understand it. It was very enjoyable and I learned a lot. It has made me more aware of the way we should treat others."

"It was great, I enjoyed the course. Very good pace and straightforward questions."

*Learner Feedback  
Equality & Diversity*

## Fire Warden for Care

eLearning - 65 minutes - CSEB086

This course sets out the key tasks and responsibilities of a Fire Warden in a care facility. It describes what this individual is and is not responsible for, and what skills, knowledge and experience they need to carry out this role successfully.

### Learning Outcomes:

- Identify the problems in dealing with fire safety in a care setting.
- Understand the legal and regulatory frameworks.
- Know the six classes of fire.
- Know the four elements of the fire tetrahedron.
- Know the types of extinguisher that can be used for the different types of fire.
- Know when to use a fire extinguisher.
- Understand the key duties of a Fire Warden during an evacuation of a premises due to fire.
- Understand the key duties of a Fire Warden in relation to risk assessment.
- Know how to source additional information for fire safety guides.

## First Aid

eLearning - 85 minutes - CSEB087

Skills Workshop - Half day - CCFD183

Skills Workshop - 1 day - CCFD018

This course is designed to promote the core principles of first aid, including heart attacks, bleeding, medical conditions, breaks, sprains, poisoning, allergic reactions, respiratory problems and dealing with an unconscious casualty. The aim is to ensure that the learner has the knowledge and understanding to treat a range of first aid incidents.

### Learning Outcomes:

- Understand the role of the first aid responder.
- Know how to assess an emergency situation and act appropriately.
- Know how to administer first aid to a casualty who is bleeding.
- Know how to administer first aid to a casualty who has been burnt or scalded.
- Know the symptoms of back injuries and how to deal with such an injury.
- Know the symptoms of broken limbs and how to deal with broken limbs.
- Know the three categories of head injuries and how they are treated.
- Know the symptoms of poisoning and how to administer first aid to an individual who has been poisoned.
- Understand the AVPU code.
- Provide first aid for an unresponsive casualty
- Recognise the requirement for and administer cardiopulmonary resuscitation.
- Recognise and administer first aid to a person who is choking.
- Recognise and manage a casualty who is suffering from shock.
- Know how to provide first aid for minor injuries.

## Food Safety

eLearning - CSEB089

This course will provide the learner with an introduction to food safety in catering. The aim of the course is to ensure the learner will gain an understanding of food safety and it will benefit a learner working in a situation where food is prepared, cooked and served. Understand the importance of food safety measures when providing food for individuals.

### Learning Outcomes:

- Understand how individuals are exposed to risks due to bad hygiene.
- Be able to maintain hygiene when handling food for individuals.
- Know the measures to take to maintain a clean work environment.
- Be able to meet safety and personal hygiene requirements when preparing and serving food.
- Be able to meet safety requirements when clearing away food.
- Be able to store food safely.
- Know the four main areas where bacterial contamination can occur.
- Know the importance of keeping a clean working environment.
- Be familiar with food safety laws.
- Know how to access additional advice or support about food safety.

## Food Safety for Catering (Level 2)

eLearning - 35 minutes - CSEB090

This module will provide the learner with an understanding of the risk involved in the preparation, handling, storage or transportation of food.

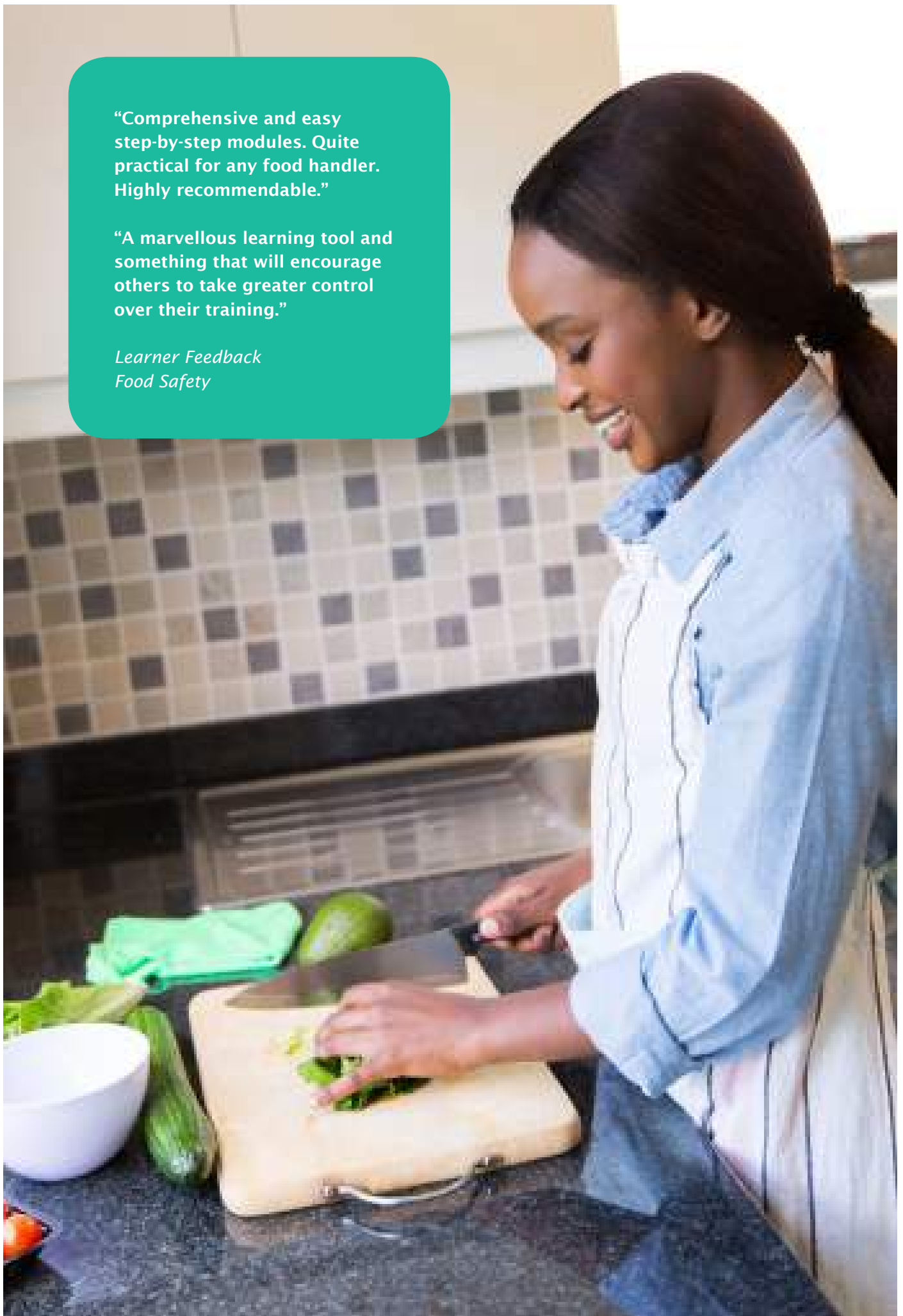
### Learning Outcomes:

- Understand the importance of food safety measures when providing food for individuals.
- Understand how individuals are exposed to risks due to bad hygiene.
- Be able to maintain hygiene when handling food for individuals.
- Know the measures to take to maintain a clean work environment.
- Be able to meet safety and personal hygiene requirements when preparing and serving food.
- Be able to meet safety requirements when clearing away food.
- Be able to store food safely.
- Know the four main areas where bacterial contamination can occur.
- Know the importance of keeping a clean working environment.
- Be familiar with food safety laws.
- Know how to access additional advice or support about food safety.

“Comprehensive and easy step-by-step modules. Quite practical for any food handler. Highly recommendable.”

“A marvellous learning tool and something that will encourage others to take greater control over their training.”

*Learner Feedback  
Food Safety*





## Food Safety for Support Workers

eLearning - 40 minutes - CSEB091

This course will provide the learner with an introduction to food safety in a support environment. The aim of the course is to ensure the learner will gain an understanding of food safety when working in a support service where food is prepared, cooked and served.

### Learning Outcomes:

- Understand the importance of food safety measures when providing food for individuals.
- Understand how service users may be exposed to risks due to bad hygiene.
- Be able to maintain hygiene when handling food for service users.
- Know the measures to take to maintain a clean work environment.
- Be able to meet safety and personal hygiene requirements when preparing and serving food.
- Be able to meet safety requirements when clearing away food.
- Be able to store food safely.
- Know the four main areas where bacterial contamination can occur.
- Know the importance of keeping a clean working environment.
- Be familiar with food safety laws.
- Know how to access additional advice or support about food safety.

## Health and Safety Awareness

eLearning - 45 minutes - CSEB098

This course raises awareness of health and safety issues that can occur in the workplace. Learners will learn about risk assessments and the importance of taking responsibility to ensure a safe working environment

### Learning Outcomes:

- Understand own responsibilities, and the responsibilities of others, relating to health and safety in the work setting.
- Recognise the requirement for health and safety legislation in the workplace.
- Understand the duties of employers and employees under health and safety legislation.
- The purpose of regulations in health and safety.
- Understand procedures for responding to accidents and sudden illness.
- Understand the enforcement of health and safety legislation in the workplace.

## Health and Safety Legislation

eLearning - CSEB099

This course will provide learners with an understanding of the legislation and responsibilities surrounding health and safety in the work place.

### Learning Outcomes:

- Recognise the requirement for health and safety legislation in the workplace.
- Duties of employers and employees under health and safety legislation.
- Understand the purpose of regulations in health and safety.
- Understand the enforcement of health and safety legislation in the workplace.
- Understand own responsibilities, and the responsibilities of others, relating to health and safety in the work setting.
- The key points of the Health and Safety Act 1974.
- Understand the role of the Health Service Executive in health and safety.
- Your legal duty as an employee to work safely.
- Be familiar with the enforcement of health and safety legislation in the workplace.
- Know the consequences of non-compliance to health and safety legislation.

## Lone Worker

eLearning - 40 minutes - CSEB119

This course provides the perfect knowledge base for any lone workers, providing them with the correct information and skills to ensure they can make the right decisions in a potentially hazardous situation.

### Learning Outcomes:

- Understand what lone working entails.
- Be aware of the legislation surrounding lone working.
- Be familiar with personal safety issues regarding lone worker status.
- Be aware of strategies available to adopt in relation to personal safety and the lone worker.
- Understand the strategies your organisation can introduce in relation to increasing the personal safety of lone workers.

## Managing Distressing Behaviour in the Workplace

eLearning - 50 minutes - CSEB125

The course raises learners' understanding of the background and risks associated with dealing with potentially violent conflict. Employees learn skills to assess and manage personal safety risks and to manage their own verbal and non-verbal behaviour in order to calm aggressive patients.

### Learning Outcomes:

- Recognise unacceptable behaviours in the workplace.
- Understand the possible causes of violence and aggression.
- Be aware of the importance of how to carry out appropriate risk assessment.
- Understand the legal requirements of both employers and employees relating to violence and aggression at work.

## Manual Handling Objects

eLearning - 60 minutes - CSEB129

This course is designed to give the learner an awareness and understanding of manual handling in the workplace. Learners will have the opportunity to become familiar with the correct technique to avoid injury when moving and handling objects.

For training resources on manual handling people, please see 'Moving and Positioning People'.

### Learning Outcomes:

- Identify legislation that relates to moving and handling.
- Be aware of physical forces when moving and handling.
- Know that damage and injuries caused by manual handling can be divided in to two groups.
- Explain principles for moving and handling equipment and other objects safely.
- Be familiar with the regulations relating to manual handling in the workplace.

## Mentorship

eLearning - 60 minutes - CSEB137

This course is designed to enable new mentors to acquire knowledge and skills and current mentors to refresh their knowledge and skills. Mentors understand different learning techniques and can support mentees through their learning and development.

### Learning Outcomes:

- Apply knowledge of learning, teaching and assessment strategies designed to promote and facilitate learning in the practice setting for a range of students, in order to maximise their individual potential.
- Utilise best available evidence and practice to demonstrate and evaluate strategies for supporting and assessing learning in practice.
- Critically reflect on the process involved in supporting and managing a learner who is failing to meet required standards and competencies by developing an action plan to resolve this situation.
- Interpret evidence-based practice within the clinical setting, ensuring that this is identifiable within the individual practice of both the mentor and the student.
- Apply appropriate educational and change management knowledge, to ensure that the learning environment is supportive and effective for students and all members of the multi-disciplinary team.

## Nutrition Awareness

eLearning - 55 minutes - CSEB144

This course will provide the learner with an awareness of nutrition. It explains the basic concepts of nutrition and highlights the ways people can integrate good nutrition into their lifestyles. The module also depicts how nutritional caring is a vital component of care.

### Learning Outcomes:

- Understand the importance of good nutrition.
- Understand the varying dietary requirements of a variety of medical conditions.
- Know dietary needs of individuals at different life stages.
- Know the importance of nutrition and hydration for adults in care.
- Know how good nutrition can reduce the risk of certain diseases.
- Understand how certain changes in diet can prevent certain diseases.
- Understand effects of unbalanced diets on the health of individuals.
- Be aware of specific dietary needs of service users based on beliefs, cultural and religious beliefs.
- Recognise best practice in the area of nutrition.
- Know what reports and key publications are available to consult regarding nutrition.

## Reporting of Injuries, Diseases and Dangerous Occurrences Regulations (RIDDOR) 2013

eLearning - 45 minutes - CSEB158

The learner will develop an awareness of RIDDOR in the workplace and become familiar with the legal requirement which governs RIDDOR.

### Learning Outcomes:

- Identify legislation relating to general health and safety in a health or social care work setting.
- Be familiar with the main points of the health and safety policies and procedures agreed with the employer.
- Outline the main health and safety responsibilities of self, the employer or manager and others in the work setting.
- Understand how to access additional support and information relating to health and safety.



**"The eLearning is well structured.  
Thank you so much for making  
it simple to understand!"**

**"This course has made me more  
confident and knowledgeable  
about situations within work  
and in everyday life."**

*Learner Feedback  
First Aid*



## Social Care Training Courses

January  
2016



**Our vision is to provide engaging,  
quality training solutions for the social  
care sector, to raise standards of care,  
and improve quality of life for service  
users.**

Care courses build on core skills training activities, encouraging learners to develop their knowledge and broaden their skills. Empower your workforce to give high quality care to your service users.

CareShield courses are specifically designed for people who work in a health or social care environment, including adult social care workers and healthcare support workers. We offer many specialist titles such as dementia awareness, end of life and safeguarding adults at risk.

## Social Care Training

Autism Awareness	23
Assessment of the Older Person	23
Caldicott Principles for Health and Social Care	23
The Care Certificate	24
Continence Management	24
Dementia Awareness	24
Dementia in Care	26
Deprivation of Liberty	26
Diabetes Management	26
Diabetes Medication	26
Dignity through Action for Care	27
End of Life	27
Epilepsy Awareness	28
Epilepsy Management	28
Erectile Dysfunction	28
Handling Medicines in Domiciliary Care	29
Infection Control: Basic Microbiology & Routes Of Transmission	29
Infection Control for Care Workers	29
Infection Control: Sharps Management	31
Infection Control for Support Workers	31
Infection Control: The Use Of Protective Clothing	31
Influenza	31
Managing Violence & Aggression	32
Manual Handling / Moving and Positioning People	32
MAR Charts for LloydsPharmacy	32
Mental Capacity Act & Deprivation of Liberty Safeguards (MCA/DOLS)	34
Medication Administration	34
Moving and Positioning People	35
Nutrition & Malnutrition in Older People	35
Pressure Ulcer Prevention	35
Risk Assessment in Care	35
Safe Administration of Medication – Foundation	36
Safe Administration of Medication – Advanced	36
Safeguarding Adults at Risk	38
Safeguarding	38
Safeguarding Young People for Managers	39
Safe Use of Bed Rails	39
The Care Act	39
Urinary Catheterisation	39





## Autism Awareness

eLearning - 40 minutes - CSEB025

This ECG Rapid eLearning course aims to give you a foundation and basic understanding of autism and is linked to Level 2 of the Health and Social Care Diploma. In this module you will learn about the spectrum of autism and how it affects people in different ways.

### Learning Outcomes:

- To be able to identify key areas of difference and difficulty for people with autism.
- To be able to name key figures in the history and development of current understanding around autism.
- To be able to identify at least three ways of working that are consistent with 'good' autism practice.

## Assessment of the Older Person

Skills Workshop - 1 day - CCFE208

Skills Workshop - 2 days - CCFF208

This course will empower you to provide the very best, specialised care to older patients and service users.

### Learning Outcomes:

- Pain management.
- Enhanced understanding of the reasons for failed discharges with older people.
- Chronic disease management in acute settings.
- Understanding complexity of caring for older people.
- Dementia and cognitive assessment.
- Ageing and frailty assessment.
- Altered mobility and mobility assessment.
- Principles of falls assessment.
- Rapid social assessment to explore the concept of risks in discharge planning or transferring of care.
- Understanding the National Services Framework (NSF) for Older People.
- Delivering person-centred care.

## Caldicott Principles for Health and Social Care

eLearning - 40 minutes - CSEB027

This course relates to compliance within confidentiality and legal frameworks when dealing with any request for information or data. It covers all aspects of an individual's information, data and any other resources relevant to their healthcare activities.

### Learning Outcomes:

- Be aware of the legal framework surrounding data protection.
- Be familiar with the Caldicott Principles.
- Be aware of how the Caldicott Principles affect healthcare workers.
- Know that all health and social services departments must have a Caldicott Guardian.
- Understand that an employee is bound to apply the Caldicott Principles.
- Be aware of the eight principles of the Data Protection Act 1998.

## The Care Certificate

eLearning Suite - CSEZ201

Interactive Workbook - CSEZ202

Assessor course - CSEB184



The Care Certificate is the new set of induction training standards, replacing the National Minimum Training Standards and Common Induction Standards.

The CareShield Care Certificate programme delivers 15 standards published by Skills for Health, Skills for Care and Health Education England:

- Understand your role.
- Your personal development.
- Duty of care.
- Equality and diversity.
- Work in a person-centred way.
- Communication.
- Privacy and dignity.
- Fluids and nutrition.
- Awareness of mental health, dementia and learning disability.
- Safeguarding adults.
- Safeguarding children.
- Basic life support.
- Health and safety.
- Handling information.
- Infection prevention and control.

**All new healthcare support workers (HCSW) and adult social care workers (ASCW) are expected to complete The Care Certificate.**

Knowledge is delivered and tested through 15 eLearning courses. As learners work through the eLearning courses, their responses populate an evidence-based workbook.

The interactive workbook also prompts learners to complete practical skills and demonstrate competence. These activities are then signed off by an occupationally competent assessor. The assessor marks activities as completed to an acceptable standard.

CareShield also offer exclusive introduction and assessor courses.

## Continence Management

Skills Workshop - 1 day - CCFE050

This one day course covers all the important aspects of continence management and is suitable for any health or social care employee. The day includes quizzes and group work.

### Learning Outcomes:

- Introduction to incontinence: prevalence, cost, attitudes, impact on the individual.
- Basic A&P of the bladder and bowel.
- Types and causes of incontinence.
- Assessment.
- Promoting continence – treatment of different types of incontinence.
- Managing incontinence in patients with dementia.
- Intermittent catheterisation.
- Management of incontinence with products.

## Dementia Awareness

eLearning - 50 minutes - CSEB058

Skills Workshop - 1 to 5 days - CCFZ205

This course will enable the learner to gain an understanding of the different types of dementia, early symptoms and current treatments. Learners will develop a clear vision about their role in caring for people with dementia and an awareness of the different support agencies.

### Learning Outcomes:

- Understand what dementia is.
- Understand key features of the theoretical models of dementia.
- Know the most common types of dementia and their causes.
- Be familiar with the drug treatments available to treat symptoms, or slow down the progression of, dementia.
- Be familiar with the health and social care services available for people with dementia.
- Know the prevention and redirection techniques to assist an individual with dementia.
- Understand factors relating to an individual's experience of dementia.
- Be aware of how a carer can support the physical and social needs of a person with dementia.
- Understand the types of behaviour associated with dementia.

"I thought it was very well put together and helpful without being patronising. It made me feel more empowered to relate to people with dementia in a positive way.

I also now feel that I have a good basic foundation of knowledge about the symptoms and stages of dementia."

*Learner Feedback  
Dementia in Care*



## Dementia in Care

eLearning - 45 minutes - CSEB059

In this course the learner will become familiar with Tom Kitwood's theory of personhood. The learner will understand that the care for a person with dementia should be centred around the person. For example, their likes, hobbies and personal history.

### Learning Outcomes:

- Understand what dementia is.
- Understand key features of the theoretical models of dementia.
- Know the most common types of dementia and their causes.
- Be familiar with the drug treatments available to treat symptoms, or slow down the progression of, dementia.
- Be familiar with the health and social care services available for people with dementia.
- Know the prevention and redirection techniques to assist an individual with dementia.
- Understand the types of behaviour associated with dementia.
- Understand factors relating to an individual's experience of dementia.

## Deprivation of Liberty

eLearning - CSEB060

This course will provide the learner with the understanding of the consequences of depriving a person of their liberty.

### Learning Outcomes:

- Understand the meaning of the term 'deprivation of liberty'.
- Be aware of what a safeguard is and why they exist.
- Be aware of the decision to apply for, assess, and review the procedure of a deprivation of liberty.
- Be familiar with the consequence of a deprivation of liberty not being authorised.
- Be aware of the governing bodies who monitor deprivation of liberties and their implementation.

## Diabetes Management

Skills Workshop - 1 day - CCFE124

Diabetes is a common long-term health condition. There are 3.2 million people diagnosed with diabetes in the UK and an estimated 630,000 people who have the condition, but don't know it. This course is suitable for any health or social care employee that wishes to gain a basic understanding of diabetes, its symptoms and management.

### Learning Outcomes:

- Increasing prevalence of Diabetes Mellitus (DM).
- Overview of DM – Type 1 and Type 2.
- Complications of DM.
- Targets of care: glycaemic control, minimising cardiovascular risk factors, renal impairment, neuropathy, retinopathy.
- Management and treatment regimens.
- Hypoglycaemia – causes and treatment.
- Hyperglycaemia – causes and treatment.
- Management of illness.
- Lifestyle implications: exercise, job implications, driving.
- 'What's new'.
- Case studies.

## Diabetes Medication

eLearning - 120 minutes - CSEC061

This course will provide the learner with an understanding of the medications required to manage diabetes. The course will not certify the learner to administer the medications. It is recommended that the learner complete a foundation course in the safe administration of medication before progressing to this course.

### Learning Outcomes:

- The common medications available to, and appropriate for individuals with diabetes.
- Be aware of the most common medications used to treat diabetes and how to record and report side effects/adverse reactions to medications.
- Be aware of the reasons why insulin could be classed a high risk medication.
- Be aware of the different types of monitoring techniques for individuals with diabetes.
- The purpose of a urine test.
- Carrying out a urine test.

## Dignity through Action for Care

eLearning - 120 minutes - CSEC062

This course has been developed in conjunction with the Health and Social Care Advisory Service (HASCAS). Learners will develop an awareness of what dignity in care means and how they can apply this learning to their practice.

### Learning Outcomes:

- Understand the term 'dignity in care'.
- Understand the term 'respect'.
- Be aware of the relationship between dignity and respect.
- Understand the subject of dignity from the perspective of care for the older person.
- Be aware of the challenges to the delivery of care with dignity.
- Understand the terms 'ageism', 'stereotyping' and 'prejudice'.
- Be aware of the most common vulnerabilities of older people.

## End of Life

eLearning - 60 minutes - CSEB075

This course has been design to give the learner an overview of the process of end of life based on the Gold Standards Framework. The learner will become familiar with the cultural needs of the various service users in their care.

### Learning Outcomes:

- Understand of the importance of delivering palliative care (or 'end of life' care) in a person-centred and holistic way.
- Be aware of the Gold Standards Framework in end of life care.
- Be aware of the signs someone is dying.
- Be aware of understanding and respect for a service user's culture and diversity.
- To promote knowledge and understanding of pain-monitoring and management, and the main types of medication used at the end of life.
- To promote knowledge and understanding of the common physical symptoms at the end of life, and how you can help relieve such symptoms.
- To consider how to manage challenging conversations so as to provide positive outcomes for the person, their family and yourself.
- To consider the wider support team available to someone requiring end of life care, such as MacMillan nurses and how they can help provide individualised, person-centred palliative care.
- To promote knowledge and understanding of bereavement and the grieving process.

## Epilepsy Awareness

eLearning - 30 minutes - CSEB078

This course will provide the learner with an awareness of epilepsy. By the end of the course the learner should have an understanding of the different types of epilepsy and how seizures may differ. The fundamental learning of this course is to ensure that a learner is familiar with what to do and what not to do when an individual is having a seizure.

### Learning Outcomes:

- Know that there are many types of epilepsy and seizures.
- Understand the signs of different seizure types and their appropriate management.
- Be familiar with some common facts about epilepsy.
- Be familiar with the common possible causes of epilepsy.
- Understand the term 'trigger' in relation to epilepsy.
- Be aware of how behaviour may change before and after a seizure.
- Understand how epilepsy may be diagnosed.
- Be aware of how to respond to an individual having a seizure.
- Understand what to do, and what not to do, when an individual is having a seizure.

## Epilepsy Management

Skills Workshop - 1 day - CCFE079

This comprehensive one day course covers the essentials of epilepsy from incidence, prevalence, epidemiology & aetiology, through seizure management to the needs of special groups such as teenagers. This programme can be easily adapted to suit individual/group needs.

### Learning Outcomes:

- Incidence, prevalence, epidemiology and aetiology of epilepsy.
- Assessment, diagnosis and management including investigative procedures.
- 1989 ILAE Classification of Seizures including video presentations.
- NICE Guidelines 2012.
- Management of epilepsy including anti-epileptic drugs, side-effects, regimes, interactions and epilepsy surgery.
- Seizure management and emergency situations.
- Social issues such as lifestyle issues, driving, education, employment, leisure, self-management /expert patient programme, stigma and myths.

## Erectile Dysfunction

eLearning - 20 minutes - CCEA082

Erectile dysfunction, or impotence, is described as the inability to achieve and maintain a penile erection to permit satisfactory sexual intercourse. Prevalence of erectile dysfunction amounts to 20–30% of the general male population in western industrialised countries. This short course will provide you with a brief summary of the condition and is suitable for any non-specialist health or social care employees that deal with men with erectile dysfunction.

### Learning Outcomes:

- What erectile dysfunction is and how a penile erection is achieved and maintained.
- The causes of erectile dysfunction.
- The association between erectile dysfunction and the development of coronary artery disease.
- Treatments available for erectile dysfunction.

## Handling Medicines in Domiciliary Care

eLearning - 80 minutes - CSEB093

This course will provide an awareness of how medicine is received and administered in a domiciliary care environment. It will provide the user with underpinning knowledge for competency in how to work safely with medication to meet the health and social care regulations.

This course does not, however, certify an individual to administer medicine. Learners are advised to refer to their local policy.

### Learning Outcomes:

- Understand the roles and responsibilities in medication management in a domiciliary care setting.
- Be aware of data protection regulations regarding personal information.
- Be familiar with the common types of medication and their use.
- Understand the procedure to receive, store and dispose of medication supplies safely.
- Be familiar with the details of a dispensing medication label.
- Be familiar with the details of a prescription form.
- Be aware of the main routes to administer medication.
- Understand how medication is administered safely.
- Be familiar with recording and reporting on use of medication.
- Be aware of how to promote the rights of the individual when managing medication.
- Understand how risk assessment can be used to promote an individual's independence in managing medication.
- Know that medication can cause undesired effects.
- Understand the conditions for the safe and secure storage of medicines.
- Understand the legislative framework for the use of medication in domiciliary care settings.

## Infection Control: Basic Microbiology & Routes Of Transmission

eLearning - 30 minutes - CCEA106

Infection control is everybody's business. Reducing infection rates will require collaborative working between various disciplines. An understanding of how micro organisms are transferred is essential if suitable precautionary methods are to be implemented.

### Learning Outcomes:

- Describe the main micro-organisms that may cause infection.
- Describe chain of events leading to the transmission of infection.
- Describe the routes of transmission for infections.

## Infection Control for Care Workers

eLearning - 40 minutes - CSEB103

This course is designed for care workers to help them understand the importance of infection control in the workplace. The content is aimed at improving working practices and affecting change in the work environment. Best working practices are referenced throughout the course to prompt the learner to reflect on their own working practice.

### Learning Outcomes:

- Understand employees roles and responsibilities in the prevention and control of infections.
- Understand employers roles and responsibilities in the prevention and control of infections.
- Understand the importance of using Personal Protective Equipment (PPE) in the prevention and control of infections.
- Be aware of the correct procedure for disposal of used PPE.
- Be aware of the importance of good personal hygiene in the prevention and control of infections.
- Understand the correct sequence for hand washing.
- Be aware that good hand washing procedures is the single most effective act in preventing the spread of infection.
- Be familiar with the types of products that should be used for hand washing.





**“This eLearning gave me a much better understanding of how to use a hoist correctly.”**

**“I will be sure to use what I have learned during my working day.”**

**“I enjoyed this course and it gave me more knowledge and understanding.”**

*Learner Feedback  
Moving & Positioning People*

## Infection Control: Sharps Management

eLearning - 30 minutes - CCEA110

Due to the significant number of sharps injuries that occur in health and social care settings and the potential for serious diseases (such as HIV, Hepatitis B and Hepatitis C), it is vital that staff reduce the risk of injury by using and disposing of needles and other sharps appropriately.

### Learning Outcomes:

- Describe the main factors that increase the risk of sharps injury.
- Describe the basic steps that may be taken to reduce sharps injury.
- Describe the actions that should be taken in the event of a sharps injury.

## Infection Control for Support Workers

eLearning - 40 minutes - CSEB105

This course is designed for support workers to help them understand the importance of infection control in the workplace. The content is aimed at improving working practices and affecting change in the work environment. Best working practices are referenced throughout the course to prompt the learner to reflect on their own working practice.

### Learning Outcomes:

- Understand employees roles and responsibilities in the prevention and control of infections.
- Understand employers roles and responsibilities in the prevention and control of infections.
- Understand the importance of using Personal Protective Equipment (PPE) in the prevention and control of infections.
- Be aware of the correct procedure for disposal of used PPE.
- Be aware that importance of good personal hygiene in the prevention and control of infections.
- Understand the correct sequence for hand washing.
- Be aware of how good hand washing procedures is the single most effective act in preventing the spread of infection.
- Be familiar with the types of products that should be used for hand washing.

## Infection Control: The Use Of Protective Clothing

eLearning - 30 minutes - CCEA111

The use of proper protective clothing (such as gloves, aprons and goggles) can greatly assist health and social care workers to reduce the risk of infection to the patient and themselves.

### Learning Outcomes:

- Describe the situations where protective clothing is appropriate.
- Describe the different types of gloves that are available and the indications for each.
- Identify the risk factors for latex sensitisation.

## Influenza

eLearning - 20 minutes - CCEA112

Influenza (Flu) is an acute viral infection of the respiratory tract. There are three types of influenza virus: Influenza A, B and C. The infection affects approximately 15% of the world's population and results in half a million deaths annually. Around 12,000 people in the UK die each year from Influenza.

### Learning Outcomes:

- Understand what influenza is and how it is spread.
- Understand the purpose of the respiratory system.
- Recognise the common signs and symptoms of influenza.
- Understand the vaccine and non-vaccine measures that can be used to reduce the risk of influenza infection.

## Managing Violence & Aggression

Skills Workshop - 1 day - CCFE126

The techniques taught are:

- Designed for use by staff of both sexes. An addition to existing clinical and professional skills.
- Techniques that do not preclude psychological methods of managing violence.
- A method of resolving violence, and reducing the risk of injury to all concerned.
- A method of ensuring that only the minimum number of staff necessary to deal with an incident is used.
- Quick, efficient, and safe.
- Used as a last resort.
- Nationally recognised techniques.

### Learning Outcomes:

- Identifying language, behaviour and roles.
- Defining aggression and violence.
- Effects of trauma.
- Theories of violence.
- Identifying & diffusing risk.
- Managing Risk & RAMAS (Risk Assessment Monitor Audit Scale).
- Discuss purpose and process.
- De-escalation model.
- VPCRD (Voice Position Control Restrain Defend).
- Aftercare.
- What is control?
- What is restraint?
- Developing skills to minimise violence – de-escalation techniques.
- Types of restraint – who can use it and when?
- Breakaway techniques.
- Understanding the skill factors related to control and restraint.

## Manual Handling / Moving and Positioning People

Skills Workshop - 1 day - CCFE127

This informative day is an ideal annual update for all health and social care staff, covering both the manual handling of inanimate objects and the moving and positioning of people.

### Learning Outcomes:

- Using an evidence base for practice.
- Ergonomics and safe systems of work.
- Structure and function of the back.
- Legislation and policies.
- Risk assessment.
- Principles of safe handling.
- Manual handling equipment.

## MAR Charts for LloydsPharmacy

eLearning - 45 minutes - CSEL131

Developed specifically for LloydsPharmacy customers, the aim of this course is to enable you to understand the correct procedures for completing Medication Administration Record (MAR) charts.

This course is suitable for care assistants, senior care assistants and nurses.

The content in this course was developed to the Royal Pharmaceutical Society of Great Britain 'Principles of safe and appropriate handling of medicines standards' and 'The safe and secure handling of medicines', which has been approved for use in England, Scotland, Wales and Northern Ireland. The Royal Pharmaceutical Society (RPSGB) is now known as the General Pharmaceutical Council (GPhC).

### Learning Outcomes:

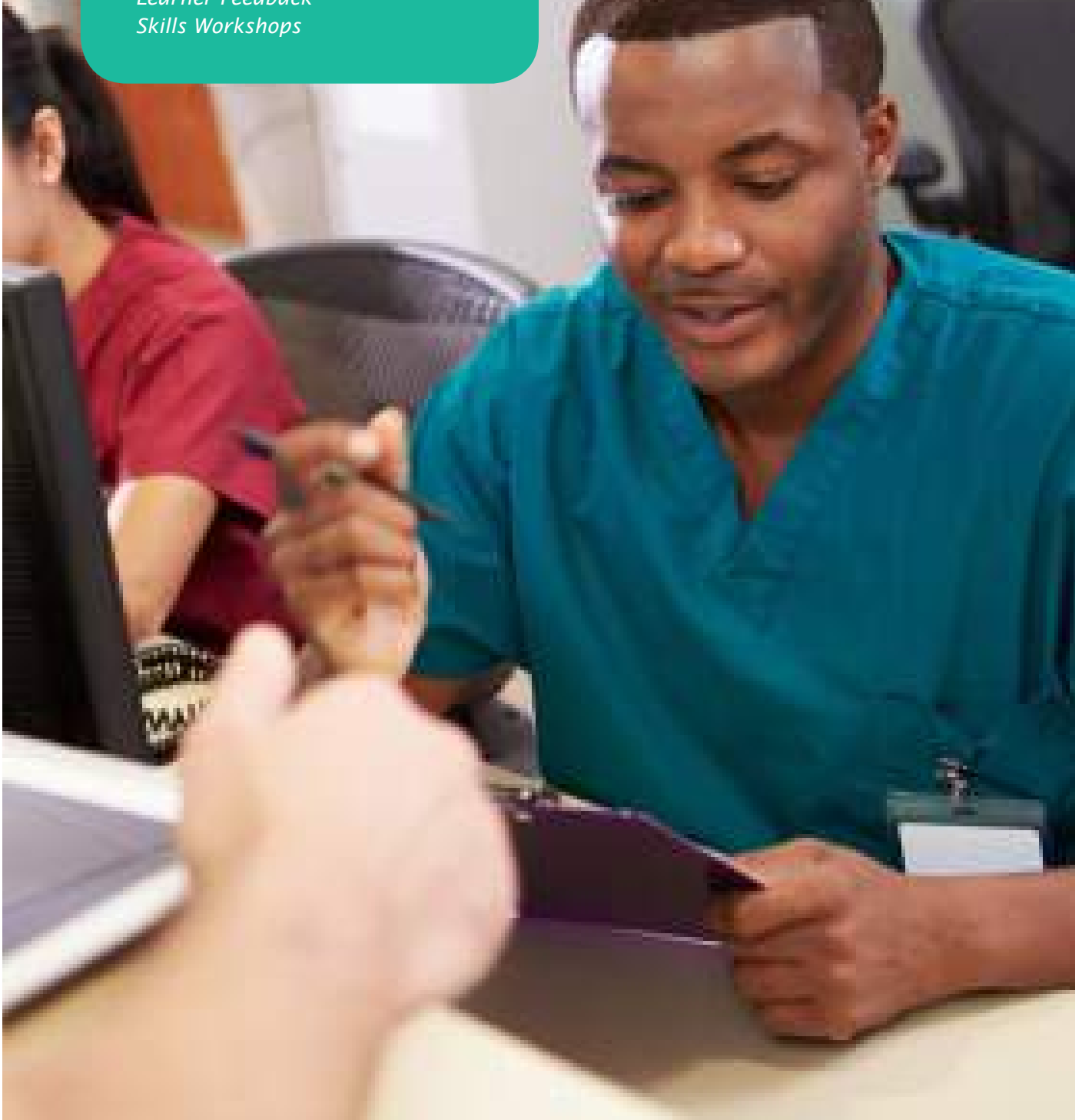
- What is a MAR Chart?
- How to complete a MAR Chart.
- Codes & correct application of codes.
- Scenarios.

“Very knowledgeable tutors.  
They were supportive and  
maintained our interest.”

“The tutors were friendly and  
made the workshops easy to  
understand.”

“The training was excellent. The  
tutors were very supportive.”

*Learner Feedback  
Skills Workshops*



## Mental Capacity Act & Deprivation of Liberty Safeguards (MCA/DOLS)

eLearning - CSEB132

This course will provide the learner with an understanding of the legislation and responsibilities surrounding The Mental Capacity Act.

### Learning Outcomes:

- Know the key provisions of the Mental Capacity Act 2005 and who it affects.
- Recognise how a person could lack capacity.
- Understand the principles of deprivation of liberty.
- Be aware of the concept of advanced decisions to refuse treatment.
- Know the conditions when an individual cannot make a decision.
- Be aware of the decisions that cannot be made on behalf of another individual.
- Understand the roles of those appointed to protect individuals in the decision-making process.
- Know who is protected by the Deprivation of Liberty Safeguards.
- Understand the role of the Court of Protection and Office of the Public Guardian.
- Know why an individual might be subject to a Deprivation of Liberty.
- Be able to differentiate between a lawful and unlawful Deprivation of Liberty.
- Know when individuals who restraint others are protected from liability.
- Understand the process of requesting and administering a Deprivation of Liberty order.
- Know how a Lasting Power of Attorney allows one person to become responsible for the affairs of another individual.

## Medication Administration

Skills Workshop - Half day - CCFD210

This course is ideal for any health or social care worker responsible for administering or handling medication.

### Learning Outcomes:

- The language of pharmacology.
- Benefits and hazards of medicines.
- Concordance and compliance of medications.
- Absorption: drugs & plasma levels.
- Pharmacology: effects of drugs on body systems.
- Adverse Effects: side-effects of drugs on body systems.
- Clearance and metabolism: effects of the body on drugs.
- Professional responsibility record keeping.

## Minor Illness Management

Skills Workshop - 2 days - CCFF138

This two day course will equip staff with the practical and theoretical skills required to safely and effectively manage a range of minor illnesses.

### Learning Outcomes:

- Overview of clinical examination and history taking.
- Professional and legal implications of autonomous practice.
- Record keeping and confidentiality.
- Assessment and management of the minor illness identified in consultation with the client.
- Treatment protocols.
- Local policy review.

## Moving and Positioning People

eLearning - 45 minutes - CSEB141

This moving and handling course is aimed at meeting the requirements of the Safety, Health and Welfare At Work Act 2005 that apply to moving and handling in the workplace. The techniques taught for patient handling are based on best practice and evidence-based research and take into account minimal handling directives.

### Learning Outcomes:

- Understand the importance of correct handling.
- Know how to prepare individuals, environments and equipment for moving and handling.
- Know how to handle and move individuals.
- Understand the risk factors associated with manual handling.
- Identify the areas of the body that can be injured by poor manual handling techniques.
- Know what information a service user assessment should include.
- Be aware of the various types of mechanical handling aids.
- Know the legislated manual handling guidelines.

## Nutrition & Malnutrition in Older People

eLearning - 55 minutes - CSEB143

This course will provide the learner with an awareness and understanding of nutrition in a social care perspective. Learners will become familiar with the nutritional issues that may especially affect service users with dementia.

### Learning Outcomes:

- Understand issues with nutrition and hydration that may occur in older people.
- Be aware of the tools available to assess individuals for malnutrition and undernutrition.
- Be aware of how to effectively use high-calorie food, fortified foods and dietary supplements.
- Be familiar with each of the main nutrition groups and the components of a balanced diet.
- Be familiar with the terms 'malnutrition' and 'undernutrition'.
- Be aware of the effects that common clinical conditions have on an individual's nutritional state.
- Understand the effects of dementia and dysphagia on older people.

## Pressure Ulcer Prevention

eLearning - 60 minutes - CSEB154

The aim of this course is to enable learners to obtain detailed knowledge of pressure ulcer management. This course includes identifying the main causes of pressure ulcers as well as the most effective means of preventing them and, if necessary, treating them.

### Learning Outcomes:

- State when and why pressure ulcers can occur.
- Understand the category scheme for pressure ulcers and the implications of that scheme.
- Be aware of the types of individuals most vulnerable to pressure ulcers and factors that can increase their vulnerability.
- Possible consequences of failing to treat a pressure ulcer effectively.
- Be aware of the various means of preventing the development of pressure ulcers.
- Understand the importance of early and effective treatment for pressure ulcers.

## Risk Assessment in Care

eLearning - 40 minutes - CSEB159

This course will provide the learner with an understanding of the legislation and responsibilities surrounding the area of risk assessment.

### Learning Outcomes:

- Know why it is important to assess health and safety risks posed by the work setting/situation or by particular activities.
- The five step approach to risk assessment.
- The difference between a risk and a hazard.
- Identify the harm each hazard may cause.
- Identify the regulations that impose the requirement for risk assessment.
- Understand how and when to report health and safety risks that you have identified.
- Be aware of local policy surrounding the completion of a risk analysis document.
- Know the circumstances for review and revise a risk assessment.
- Be aware of the regulations that impose the requirement for risk assessment.
- Understand how risk assessments affect work practices.

## Safe Administration of Medication - Foundation

eLearning - 80 minutes - CSEB134

This course will provide an awareness of how medicine is received and administered in a social care environment. It will provide the learner with the knowledge that supports the competency framework, for working safely with medications, in order to meet the health and social care regulations. This course does not however, certify an individual to administer medicine. Learners are advised to refer to their local policy.

### Learning Outcomes:

- Understand the roles and responsibilities in medication management in a social care setting.
- Be aware of data protection regulations regarding personal information.
- Be familiar with the common types of medication and their use.
- Understand the procedure to receive, store and dispose of medication supplies safely.
- Be familiar with the details of a dispensing medication label.
- Be familiar with the details of a prescription form.
- Be aware of the main routes to administer medication.
- Understand how medication is administered safely.
- Be familiar with recording and reporting on use of medication.
- Be aware of how to promote the rights of the individual when managing medication.
- Explain how risk assessment can be used to promote an individual's independence in managing medication.
- Understand the conditions for the safe and secure storage of medicines.
- Understand the legislative framework for the use of medication in social care settings.

## Safe Administration of Medication - Advanced

eLearning - 120 minutes - CSEC133

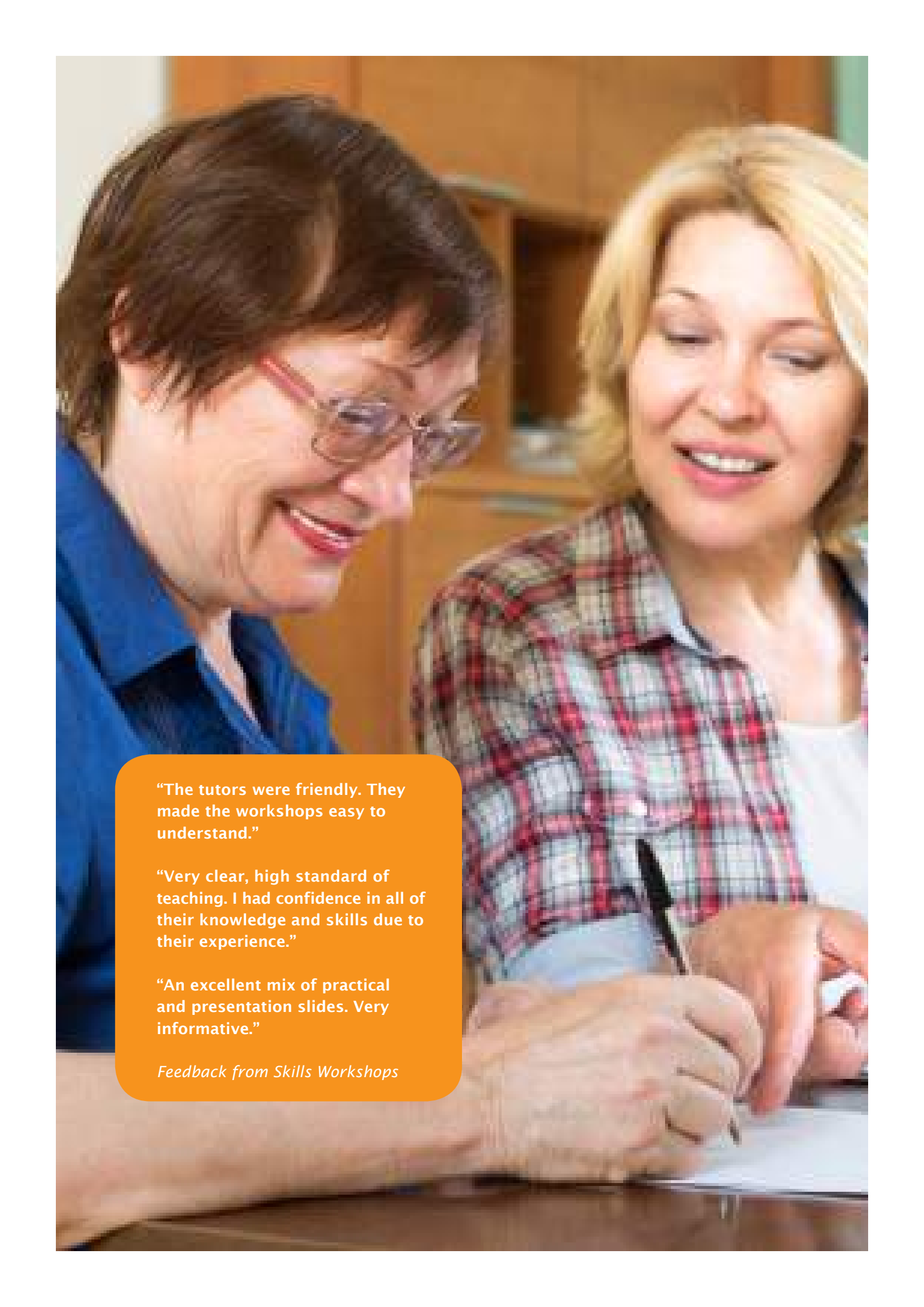
This course will provide the learner with the knowledge to identify the effect of a range of different medications on the body and to deal effectively with problems such as adverse drug reactions (ADRs) and drug interactions (DIs).

It is highly recommended that the learner will have completed The Safe Administration of Medications Foundation course before progressing to the Advanced course. This course does not certify an individual to administer medicine. Learners are advised to refer to their local policy.

### Learning Outcomes:

- Understand the main functions of some major organs in the human body.
- Be familiar with the term adverse drug reactions (ADRs).
- Understand the term drug interactions (DIs).
- Understand how some medications affect the major organs in the body.
- Understand changes to an individual's physical or mental wellbeing that may indicate an adverse reaction to a medication.
- Be aware of the effect of age on the body and its impact on medication.
- Be familiar with sources of information on drugs, their uses and their known interactions.



A photograph of two women, one with dark hair and glasses and the other with blonde hair, both smiling and looking down at a document. The woman with dark hair is wearing a blue shirt, and the woman with blonde hair is wearing a plaid shirt. They appear to be in a workshop or classroom setting.

**"The tutors were friendly. They made the workshops easy to understand."**

**"Very clear, high standard of teaching. I had confidence in all of their knowledge and skills due to their experience."**

**"An excellent mix of practical and presentation slides. Very informative."**

*Feedback from Skills Workshops*

## Safeguarding Adults at Risk

eLearning - 55 minutes - CSEB161

This course has been designed to highlight the signs and symptoms of abuse which a learner may come in contact with during the course of their working day. Learners will become familiar with the process of reporting a disclosure of abuse.

### Learning Outcomes:

- Know the seven common types of abuse.
- Know how to recognise signs of abuse.
- Know how to respond to suspected or alleged abuse.
- Understand the national and local context of safeguarding and protection from abuse.
- Understand the relationship between emotional abuse and other types of abuse.
- Understand ways to reduce the likelihood of abuse.
- Be aware of unsafe practices that may affect the wellbeing of individuals.
- Know how to recognise and report unsafe practices.
- Be aware of the legislative framework which safeguards vulnerable adults.
- Know effective recruitment practices within the social care sector.
- Understand the key role of a carer or responsible person when abuse is suspected.
- Understand the term 'whistleblowing'.
- List the organisations that can provide support following a disclosure of abuse.

## Safeguarding

eLearning - each course lasts 50 minutes:

Children (0-7) - CSEB162

Children and Young Adults (0-16) - CSEB163

Young Adults (7-19) - CSEB164

The aim of this course is to equip the learner with the knowledge to understand the term 'safeguarding.' The course describes the signs and indicators of the different types of abuse. The learner will be guided through the correct procedure of how to respond to a disclosure of abuse and become aware of safe working practices in their working environment.

### Learning Outcomes:

- Understand the different forms that child abuse can take.
- Understand different types of abuse.
- Be aware of the differences between accidental and abusive injuries.
- Be aware of the specific issues when dealing with abuse of children with a disability.
- Understand the importance of responding professionally to a child's disclosure of abuse.
- Understand the importance of confidentiality and information sharing in relation to child protection.
- Understand ways in which workers and organisations can protect themselves and work safely with children.
- Identify the background and key elements of various Children's Acts.
- Recognise parental responsibility and support giving organisations.

## Safeguarding Young People for Managers

eLearning - 60 minutes - CSEB165

This course details the signs and symptoms of the seven types of abuse and provides recommendations of how an individual can protect themselves from potential allegations and safer recruitment.

### Learning Outcomes:

- Know the seven common types of abuse.
- Know how to recognise signs of abuse.
- Know how to respond to suspected or alleged abuse.
- Understand the national and local context of safeguarding and protection from abuse.
- Understand the relationship between emotional abuse and other types of abuse.
- Understand ways to reduce the likelihood of abuse.
- Know how to recognise and report unsafe practices.
- Be aware of the legislative framework which safeguards vulnerable adults.
- Know effective recruitment practices within the social care sector.
- Understand the key role of a carer or responsible person when abuse is suspected.
- Understand the term 'whistleblowing'.
- List the organisations that can provide support following a disclosure of abuse.

## Safe Use of Bed Rails

eLearning - 40 minutes - CSEB160

This course will provide the learner with an understanding of the safe use of bed rails.

### Learning Outcomes:

- Terminology associated with bed rails.
- Understand the purpose of bedside rails.
- Recognise the risks/accident/causes associated with the use of bed rails.
- Be aware of the alternative methods available.
- Be aware of how to perform risk assessments
- Know how to select a safe bedside rail.
- Be aware of the bedside rail dimensions required.
- Be familiar with the correct/safe fitting procedure of bedside rails.
- Know the requirements for bedside rail bumper and mattress overlays.

- Understand the likelihood of typical problems associated with bed rails.
- Recognise the regular need for maintenance, monitoring and checks of bed rails.

## The Care Act

eLearning-CSEB169

The Care Act 2014 introduces new responsibilities for local authorities and safeguarding adults' boards. It also has major implications for care, health and housing providers, people who use services, carers and advocates.

### Learning Outcomes:

- Learners to have a clear understanding of the key content of the Care Act 2014
- Learners to gain a clear understanding of the differences in process, criteria and approach that the Care Act 2014 will bring
- Learners to understand the concept of wellbeing and its role in the new care and support system
- Learners to have awareness of the implications of the changes for local authorities and other partners.

## Urinary Catheterisation

Skills Workshop - Half day - CCFD084

eLearning - 30 minutes - CCEA176

This course will instruct learners how to perform male and female catheterisation in a safe and skilled manner. As the introduction of a urinary catheter presents an opportunity for micro-organisms to invade the urinary tract resulting in a urinary tract infection (UTI), the eLearning course focuses on the infection control aspects of catheterisation.

### Learning Outcomes:

- Describe the role of urinary catheterisation in urinary tract infection.
- Describe the indications for urinary catheterisation.
- Describe and demonstrate the correct technique for insertion and aftercare of a urinary catheter.
- Describe the signs and symptoms of a urinary tract infection.
- Scope of professional practice overview.
- Anatomy & physiology.
- Guidelines for practice.
- Choice of catheters & drainage systems.
- Practical procedure & supervision.



# Healthcare Training Courses

January  
2016

**Continuous professional development  
is not only valuable to an organisation,  
but to individuals wanting to widen  
their own knowledge.**

CareShield provides [holistic training solutions](#) suitable for every member of the multidisciplinary healthcare team including [support staff, paramedics, nurses and GPs](#).

Clinical procedures are brought to life with our [specialist training equipment](#), narrowing the gap between practising in training sessions and carrying out the procedure for the first time.

All of our tutors are currently working as senior clinicians in their respective fields. They can incorporate the specific needs of your service users in to your training sessions so that your team can provide the highest levels of care for every patient.



## Healthcare Training

12-Lead ECG in Acute Coronary Syndrome	43	Infection Control: Enteral Feeding	54
12-Lead ECG Recording	43	Infection Control: Hand Hygiene	54
Acquired Brain Injury (ABI)	43	Infection Control: Intravenous (IV) Therapy	55
Acute Adult Asthma	44	Interpretation of Coagulation Screen	55
Acute Coronary Syndromes	44	Interpretation of Full Blood Count	55
Acute Medical Emergencies	44	Introduction to Skeletal X-Ray Interpretation	55
Acute Surgical Emergencies	44	IV Fluid & Drug Therapy	55
Adult Life Support (Advanced)	45	Making Sense of Blood Results	56
Arterial Blood Gas (ABG) Interpretation	45	Malaria	56
Arterial Blood Sampling	45	Meningitis	56
Atrial Fibrillation & Stroke Prevention	45	Minor Injuries Course	57
Cardiac Drugs	47	Motion Sickness	57
Cardiac Health	47	MRSA	57
Cardiac Pacemakers	47	Non-Invasive Ventilation	57
Care of the Critically Ill Patient	47	On-Site Bedside Assessment Course	57
Care of the Ventilated Patient	48	Paediatric Life Support	57
Chest X-Ray Demystified	48	Paediatric Minor Illness Course	59
Chlamydia	48	Pain Management	59
Clinical History Taking & Physical Examination Skills	48	Peripheral Venous Cannulation	59
Core Cardiac Education Programme	49	Practical Skills for Support Workers	59
Cystitis In Women	49	Pre-Surgical Assessment	59
Diphtheria, Tetanus & Poliomyelitis	49	Psoriasis	60
Drug Calculations – Avoiding Errors	49	Rabies	60
Early Warning Scoring and Pulse Oximetry	50	Respiratory Care Course	60
Early Warning Signs Scoring	50	Skin Antisepsis	60
ECG Demystified	50	Spirometry In Practice	61
ECG Part II	50	Stable Angina	61
Emergency Contraception	52	Stroke Management	61
Enteral Feeding	52	The Law and the Nurse	61
Erectile Dysfunction & Coronary Artery Disease	52	Tracheostomy Care	62
Haemodynamic Monitoring	52	Trauma Management	62
Hay Fever	53	Travellers' Diarrhoea	62
Heart Failure	53	Typhoid	62
Hepatitis A	53	Vaccination Programmes	64
Hepatitis B	53	Venepuncture & Peripheral IV Cannulation	64
Infection Control for Healthcare Environments	53	Verification of Death by Registered Nurses	64
Infection Control: Clostridium Difficile	54	Wound Care & Tissue Viability	65
Infection Control: Decontamination	54	Yellow Fever	65

## 12-Lead ECG in Acute Coronary Syndrome

Skills Workshop - CCFE001 - 1 day option  
Skills Workshop - CCFF001 - 2 day option  
eLearning - CCEC001

Chest pain accounts for 20–30% of all presentations to Accident & Emergency departments. This makes the ability to interpret 12-lead ECGs a fundamental requirement for staff involved in the assessment of patients with chest pain. These courses provide an overview of the 12-lead ECGs seen in patients presenting with chest pain and Acute Coronary Syndrome (ACS).

### Learning Outcomes:

- Understand the term ‘acute coronary syndrome (ACS),’ its pathophysiology, and implications.
- Identify the ECG appearances in unstable angina, (Acute Myocardial Ischaemia) ST elevation Myocardial Infarction (STEMI) and Non-ST elevation Myocardial Infarction (non-STEMI).
- Identify and be aware of the significance of the following ECG appearances:
  - ST elevation.
  - ST depression.
  - T wave inversion.
  - Pathological Q wave.

## 12-Lead ECG Recording

Skills Workshop - Half day - CCFD003  
eLearning - CCEC003

The 12-lead ECG is the most commonly performed diagnostic procedure in cardiology. Practice in 12-lead ECG recording varies across the NHS predominantly due to variations in training, personal experience and preferences as well as resources. This short course aims to reduce such variation by ensuring that members of staff that perform 12-lead ECG recording do so using evidence-based information based on approved guidelines issued by The Society for Cardiological Science & Technology (SCST).

### Learning Outcomes:

- Identify the main indications for 12-Lead ECG recording.
- Be aware of the equipment required to record a 12-lead ECG.
- Prepare a patient for a 12-lead ECG recording.
- Be able to place the chest and limb electrodes in accordance with approved guidelines issued by The Society for Cardiological Science & Technology.
- Identify the appearance, causes and solutions to the most common problems encountered in 12-lead ECG recording.
- Identify the electrode placement in Mason Likar and Holter ECG monitoring techniques.

## Acquired Brain Injury (ABI)

Skills Workshop - 1 day - CCFE204

This specialist course is essential for any healthcare worker or support worker working with patients and/or service users with acquired brain injuries.

### Learning Outcomes:

- The anatomy and function of the brain.
- Causes of ABI (traumatic brain injury, stroke, infection).
- How ABI affects experience of life.
- The role of support workers and the multidisciplinary team.
- Communication strategies.
- Low arousal techniques.
- Case study approach to patient and family experiences of ABI.

## Acute Adult Asthma

eLearning - CCEA005

Asthma is a common condition that affects 5.4 million people in the UK. This short course will provide you with a quick revision of the condition and is suitable for any non specialist healthcare professional that deals with adults with asthma.

### Learning Outcomes:

- How oxygen is exchanged in the lungs.
- What factors can increase the likelihood of asthma.
- The main clinical features of an acute attack.
- What place salbutamol has in asthma therapy.

## Acute Coronary Syndromes

Skills Workshop - 1 day - CCFE006

eLearning - CCEC006

These courses will be of interest to any health professional whose patients present with chest pain. It will be of particular interest to paramedics, GPs and nurses involved in the early or pre-hospital management of patients with suspected acute coronary syndrome.

### Learning Outcomes:

- Understand the spectrum of acute coronary syndrome (ACS) presentations.
- Identify the clinical signs and symptoms in ACS.
- Understand the rationale and techniques in reperfusion therapy including thrombolysis and Percutaneous Coronary Intervention (PCI).

## Acute Medical Emergencies

Skills Workshop - 2 days - CCFF008

This very comprehensive and graphic course is a must for staff who deal with this type of patient. It provides a structured approach to the pathophysiology, epidemiology, clinical presentation and evidence-based management of the acutely ill patient.

### Learning Outcomes Day 1:

- Chest pain – acute coronary syndromes focusing on acute Myocardial Infarction.
- Diabetes and diabetic coma.
- Acute renal failure.
- Acute adult asthma.
- Anaphylaxis.

### Learning Outcomes Day 2:

- Self-poisoning
- Major and massive pulmonary embolism (PE).
- Gastrointestinal bleeding and oesophageal varices.
- Acute left ventricular failure.
- Case study scenarios throughout.

## Acute Surgical Emergencies

Skills Workshop - 1 day - CCFE009

This acute one-day course will appeal to all staff working in busy acute surgical departments, High Dependency Units and Accident & Emergency. It will also provide a comprehensive update for experienced surgical nurses. A number of intriguing case study scenarios help relate the theory to clinical practice.

### Learning Outcomes:

This course provides a structural approach to the pathophysiology, epidemiology, clinical presentation and evidence-based management of the acutely ill surgical patient presenting with:

- Ruptured aortic aneurysm.
- Gastrointestinal bleeding.
- Pancreatitis.
- Ectopic pregnancy.
- Peritonitis.
- Appendicitis.
- Ruptured spleen.
- Ischaemic limbs.



## Adult Life Support (Advanced)

Skills Workshop - 1 day - CCFE014

This course will equip learners with the theoretical and practical skills required to practice advanced life support in adults.

### Learning Outcomes:

- Incidence and causes of sudden death.
- Review of basic resuscitation skills.
- Advanced life support practice and supervision.
- Defibrillation technique.
- ECG recognition of cardiac arrest and peri arrest rhythms.
- Airway management – Laryngeal Mask Airway and Endotracheal Intubation.
- Drug administration methods.

## Arterial Blood Gas (ABG) Interpretation

Skills Workshop - 1 day - CCFE021

We guarantee that you will be able to interpret arterial blood gases (ABGs) with confidence by the end of this popular course. There is also an option to include the interpretation of chest x-rays in a number of common conditions.

This course is suitable for all nurses who require an understanding of the significance of arterial blood gas results, the mechanisms of acid-base balance and compensation. It will be of particular interest to healthcare professionals working in Accident and Emergency, Intensive Care Units (ICU) and High Dependency Units (HDU).

The learning outcomes can be tailored to include any of the following:

### Arterial blood gas sampling:

- Site selection, equipment and ABG radial artery sampling technique.
- Complications of ABG sampling.
- Practical instruction and supervision.

### Arterial blood gas analysis:

- Oxygen transport physiology and pulse oximetry.
- Acid base balance.
- Disorders of acid base balance.
- A step-by-step guide to ABG interpretation.
- ABG with compensation.

Basic chest x-ray interpretation:

- Review of respiratory anatomy.
- The normal chest x-ray.
- The chest x-ray appearance in: left ventricular failure, pneumonia, COPD, pulmonary embolism, lung cancer.

## Arterial Blood Sampling

Skills Workshop - Half day - CCFD022

Arterial blood sampling is a technique that involves the withdrawal of blood directly from an artery so that the oxygen and carbon dioxide levels may be accurately assessed. It is a technique that is required in the management of many conditions, primarily respiratory, to enable optimum oxygen therapy and management strategies to be used.

### Learning Outcomes:

- Legal and professional issues.
- Anatomical considerations: arteries of the arm and leg.
- Artery selection criteria.
- The Allens Test.
- Equipment available.
- Procedure for 'arterial stab'.
- Practical workshop – instruction and supervision.
- Complications.

## Atrial Fibrillation & Stroke Prevention

Skills Workshop - 1 day - CCFE023

eLearning - CCEC023

Atrial Fibrillation (AF) is the most common cardiac arrhythmia encountered. It significantly increases the risk of ischaemic stroke and is a major cause of morbidity and mortality. This course will be of interest to all healthcare practitioners as it will enable them to identify AF at an early stage allowing interventions to reduce the risk of stroke.

### Learning Outcomes:

- Understand the link between AF and ischaemic stroke.
- Identify AF from clinical examination and ECG interpretation.
- Assess the risk of stroke in patients with AF.
- Understand the stroke prevention treatment options available to patients with AF.



**“Feedback from the nurses and care workers who attend these courses is excellent.**

**This is measured by the scoring of courses and in almost all instances this exceeds 8 out of 10. This without doubt reflects the quality of the courses provided.”**

*Learner Feedback  
Healthcare Skills Workshop*

## Cardiac Drugs

Skills Workshop - 1 day - CCFE028

This ever popular course covers all you need to know about drugs used in heart disease management.

### Learning Outcomes:

- Acute myocardial infarction.
- Acute coronary syndromes.
- Lipid lowering.
- Heart failure.
- Anti-arrhythmic drugs.

## Cardiac Health

Skills Workshop - 1 day - CCFE029

eLearning - CCEZ029

This course examines all aspects of cardiac health and rehabilitation. It provides nurses and other healthcare staff with the knowledge and skills required to provide evidence-based, quality care to patients with coronary heart disease (CHD).

### Learning Outcomes:

- National CHD strategies and policies.
- Establishing CHD clinics in primary care.
- What is cardiac rehabilitation?
- Misconceptions, myths, sex and all that stuff.
- Cardiac risk factors.
- Motivational interviewing (MI).
- Psychology, exercise and cardiac rehabilitation.
- Cardiac drugs.
- Relaxation & stress management.
- Heart failure – an overview.

## Cardiac Pacemakers

eLearning - CCEB031

A permanent cardiac pacemaker is a small, implantable electronic device that is used to maintain a sufficient heart rate when the heart's own natural, intrinsic pacemakers fail. Pacemakers are indicated for use in the treatment of symptomatic bradycardia. They control or replace the heart's intrinsic electrical activity. Nurses and other healthcare professionals will encounter patients with cardiac pacemakers across a wide range of disciplines and this course aims to enhance their skills, knowledge and understanding of these devices.

### Learning Outcomes:

- Describe the appearances of a normal ECG rhythm.
- Understand and describe the indications for permanent cardiac pacemakers.
- Describe the procedure for preparing a patient for permanent cardiac pacemaker implantation.
- Understand pacemaker codes.
- Identify pacemaker rhythm on an ECG.
- Describe and identify common pacemaker malfunctions.
- Offer a patient evidence-based education regarding their cardiac pacemaker.

## Care of the Critically Ill Patient

Skills Workshop - CCFE032 - 1 day option

Skills Workshop - CCFF032 - 2 day option

This comprehensive two-day course is aimed at nurses who manage critically ill patients within acute areas, operating theatres, High Dependency and Intensive Care Units. There is a particular emphasis on managing the patient requiring ventilatory support.

### Learning Outcomes:

- The ventilated patient – modes of ventilation, airway management, sedation, weaning etc.
- Inotropic drugs – dobutamine, dopamine, adrenaline, noradrenaline.
- Pulse oximetry and oxygen transport physiology.
- Haemodynamic monitoring – central lines and central venous pressure (CVP) monitoring, arterial lines, Pulmonary Artery Flotation Catheters.
- Haemofiltration.
- ICU psychosis.

## Care of the Ventilated Patient

Skills Workshop - 2 days - CCFF033

This two-day course will provide a valuable coverage of the theory and skills required to manage the patient requiring ventilatory support.

### Learning Outcomes:

- Physiology of spontaneous & mechanical ventilation.
- Arterial blood gas analysis.
- Pulse oximetry.
- Modes of mechanical ventilation.
- BiPAP (bi-level positive airway pressure) and CPAP (continuous positive airway pressure).
- Psychological aspects of mechanical ventilation.
- Sedation, sedation scoring & pain assessment.
- Airway management.
- General care of the ventilated patient.

## Chest X-Ray Demystified

Skills Workshop - 2 days - CCFF034

eLearning - CCEZ034

Detailed interpretation of the chest radiograph is a skill that requires many years of clinical practice and experience. These courses are not intended to offer an exhaustive reference for chest x-ray diagnosis. But it will provide a useful and practical introduction to those practitioners who need to develop these skills.

These courses are suitable for healthcare professionals who are involved in interpreting chest x-rays including nurses, nurse practitioners, junior doctors and physiotherapists.

### Learning Outcomes:

- Factors that determine technical quality: penetration, orientation, rotation.
- Systematic analysis of chest x-rays.
- Features and appearance of a normal chest x-ray.

Chest x-ray features of clinical conditions:

- Acute left ventricular failure.
- Chronic obstructive pulmonary disease.
- Consolidation due to pneumonia.
- Lung cancer.
- Pleural effusion.
- Pneumothorax.

## Chlamydia

eLearning - CCEA038

Chlamydia is the most prevalent bacterial sexually transmitted infection in the United Kingdom. Prevalence may be as high as 2–6% in men and women under 25 years of age. This short course will provide you with a brief outline of the condition and is suitable for any non-specialist healthcare professional that deals with men and women with Chlamydia.

### Learning Outcomes:

- What chlamydia is and its causes.
- Symptoms of chlamydia in men and women.
- The tests involved in making a diagnosis of chlamydia.
- Treatment of chlamydia.
- Patient information and advice about chlamydia.

## Clinical History Taking and Physical Examination Skills Course

Skills Workshop - 2 days - CCFF047

This two-day course will equip learners with all the theoretical and practical skills required to safely and competently take a detailed clinical history and physical examination.

### Learning Outcomes:

- Taking a clinical history and documentation.
- Record keeping and confidentiality.
- Cardiovascular examination: heart sounds (practical), assessment of symptoms, chest pain differential diagnosis.
- Respiratory examination: chest sounds (practical), percussion and auscultation.
- Abdominal examination: palpation, bowel sounds, urinary assessment.
- Neurological examination.

## Core Cardiac Education Programme

Skills Workshop - POA - CCFZ051

eLearning - CCEZ051

The core cardiac education programme provides a contemporary overview of cardiac care providing a broad foundation for your development.

The programme aims to build on your existing knowledge and skills to enable you to become more confident and effective within your role in cardiac care.

The focus is on specific knowledge and skills to underpin your practice ranging from the anatomy and physiology of the cardiovascular system to the management of long-term cardiac conditions. It is suitable for all practitioners working with cardiac patients and is designed to offer knowledge, a core set of skills and learning opportunities.

### Learning Outcomes:

- To provide practitioners with the opportunity to enhance their knowledge base and develop a critical approach to integrated cardiac care.
- To enable the practitioner to be equipped to deliver care that is patient-centred and responsive to the service demands within their area of practice.

## Cystitis In Women

eLearning - CCEA054

Cystitis is an inflammation of the bladder. It is most commonly caused by a urinary tract infection. This short course will provide you with a brief overview of the condition and is suitable for any non-specialist healthcare professional that deals with women with cystitis.

### Learning Outcomes:

- What cystitis is and why women are more prone to it.
- What factors increase the likelihood of developing cystitis.
- The main symptoms of cystitis.
- The options available for the treatment of cystitis.

## Diphtheria, Tetanus & Poliomyelitis

eLearning - CCEA063

Revaxis® is a combined vaccine offering immunisation for diphtheria, tetanus and poliomyelitis. This short course will provide you with a brief overview of the conditions and is suitable for any non-specialist healthcare professional that deals with travellers that are potentially exposed to diphtheria, tetanus and poliomyelitis.

### Learning Outcomes:

- What diphtheria, tetanus and poliomyelitis are and how they are transmitted.
- Who is most at risk of these diseases?
- The signs and symptoms of diphtheria, tetanus and poliomyelitis.
- What the national UK immunisation schedule is.
- Where diphtheria, tetanus and poliomyelitis vaccinations are required.
- The licensed uses of the Revaxis® vaccine.

## Drug Calculations - Avoiding Errors

eLearning - CCEB066

Research by the NPSA (National Patient Safety Agency) shows that almost one in ten patients in UK hospitals experience harm or even death as a consequence of drug errors.

Drug errors occur for a number of reasons and these courses will focus primarily on the avoidance of drug errors that occur through incorrect drug calculations. These courses are suitable for any healthcare practitioner who is involved in the administration of medicines.

### Learning Outcomes:

- Understand the need for basic arithmetical skills in drug calculations and demonstrate competency in this area.
- Avoid drug errors by adopting a standardised approach to drug dose calculations.
- Ultimately prevent patient injury or harm as a consequence of drug errors.

## Early Warning Scoring and Pulse Oximetry

Skills Workshop - 1 day - CCFE069  
eLearning - CCEB068

There is good evidence that a significant number of patient deaths in hospital are preventable. Detecting signs of a patient's deterioration with early warning scoring (EWS), combined with effective processes for emergency response, could help prevent cardiac arrest in the general ward.

This programme will examine the use of early warning scores and their role in preventing cardiac arrest. It will also look specifically at the technique of pulse oximetry.

### Learning Outcomes:

- Identify the role of early warning scoring in preventing cardiac arrest and unplanned admission to ITU.
- Identify the early warning scoring parameters.
- Understand oxygen transport physiology.
- Identify the main indications for performing pulse oximetry.
- Identify the equipment and correct procedure for monitoring pulse oximetry and ensuring safety.
- Understand the limitations of pulse oximetry.

## Early Warning Signs Scoring

Skills Workshop - 1 day - CCFE070

The aim of early warning systems is to identify patients at risk / deteriorating status which triggers an immediate response through scoring points for abnormal physiological values.

This day will appeal to healthcare professionals working in any environment which utilises the Modified Early Warning (MEWS) scoring system. Theory surrounding its development will be explained and clarified to underpin its utilisation in the clinical arena.

### Learning Outcomes:

- Background and aims.
- Governmental policies.
- Independent healthcare sector.
- Evidence base.
- MEWS observation chart and group work.

## ECG Demystified

Skills Workshop - 2 days - CCFF071  
eLearning - CCEZ071

Widely acclaimed as the “ultimate guide to ECG interpretation” this course will appeal to healthcare professionals who are involved in recording and interpretation of ECGs. It is suitable for all healthcare staff as it begins with a basic overview and builds up to an advanced level of interpretation over the two days. Last year 98% of attendees rated this course at 8 or more out of 10 in their evaluation.

### DAY 1 – ECG Rhythms... Without the Blues!

- Review of cardiac anatomy and coronary circulation.
- Practicalities of ECG rhythm monitoring.
- Sinus rhythm and variations, junctional rhythm.
- Supraventricular tachycardia.
- Ectopics.
- Atrial fibrillation and atrial flutter.
- Heart blocks.
- Cardiac arrest rhythms.

### DAY 2 – Reading between the lines: The 12-Lead ECG

- Recording a 12-Lead ECG.
- The limb leads and chest leads.
- Cardiac axis made easy.
- The ECG in acute coronary syndromes – differential diagnosis of unstable angina, non ST elevation myocardial infarction and ST elevation Myocardial Infarction.

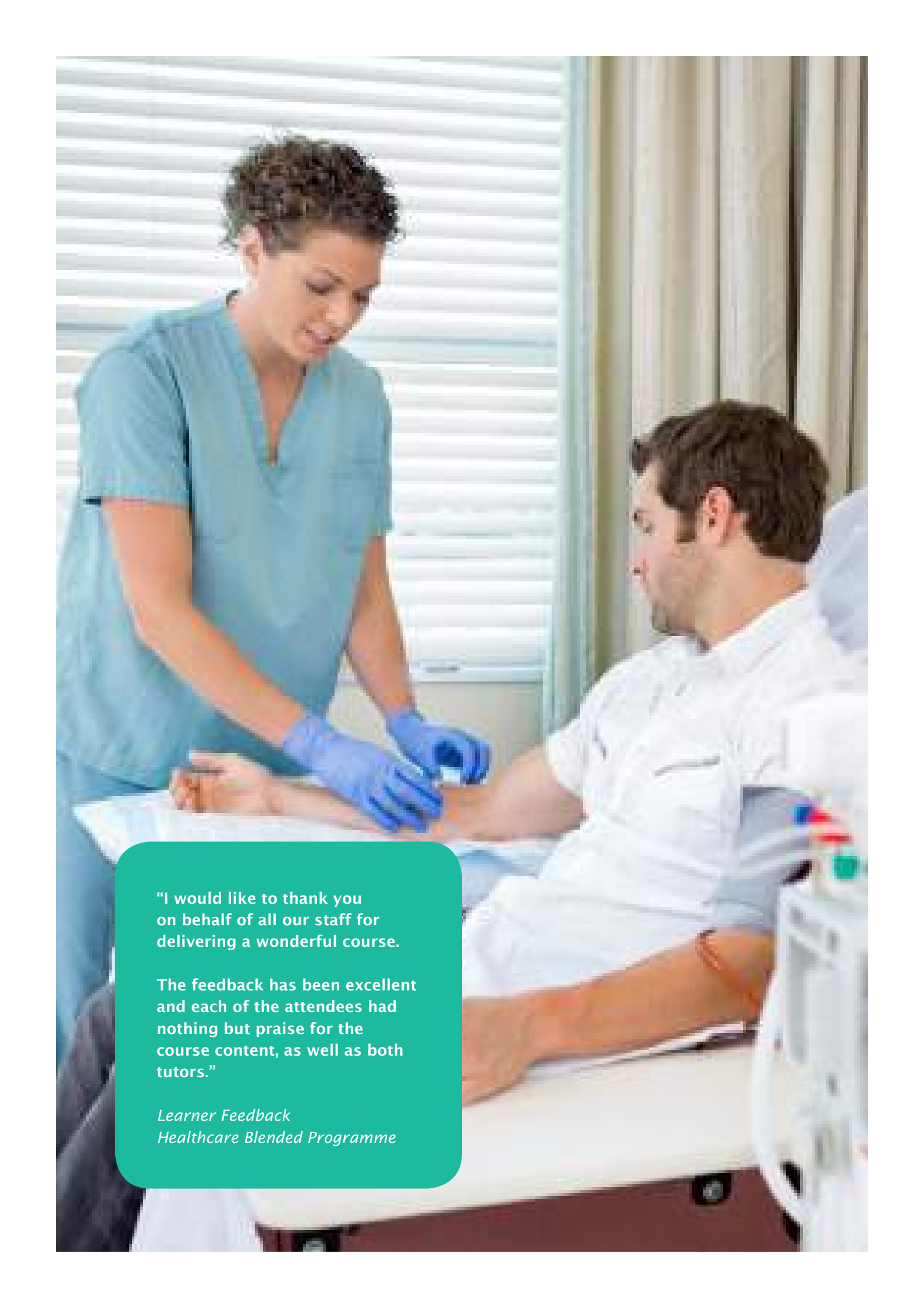
## ECG Part II

Skills Workshop - 1 day - CCFE073

Due to high demand, this course ECG is suitable as a follow-up for the “ECG Demystified ©” course or for those with a working knowledge of ECGs.

### Learning Outcomes:

- The ECG in acute coronary syndromes.
- The ECG in: pericarditis, hyperkalaemia, hypokalaemia, digoxin toxicity, WPW, pulmonary embolism.
- True posterior myocardial infarction.
- Right and left bundle branch blocks.
- Atrial and ventricular hypertrophy.



"I would like to thank you  
on behalf of all our staff for  
delivering a wonderful course.

The feedback has been excellent  
and each of the attendees had  
nothing but praise for the  
course content, as well as both  
tutors."

*Learner Feedback  
Healthcare Blended Programme*

## Emergency Contraception

eLearning - CCEA074

The morning after pill can be used either as emergency contraception to prevent pregnancy after having unprotected sexual intercourse, or if a method of contraception has failed. This short course will provide you with a brief overview of the treatment and is suitable for any non-specialist healthcare professional that deals with women requesting emergency contraception.

### Learning Outcomes:

- When the most fertile period is in the female menstrual cycle.
- The different methods of emergency contraception.
- The difference between levonorgestrel and ulipristal.
- Advice patients should receive following provision of emergency contraception.

## Enteral Feeding

Skills Workshop - Half day - CCFD076

This course is an ideal introduction (or refresher) on enteral feeding and percutaneous endoscopic gastrostomy (PEG) feeding.

### Learning Outcomes:

- Anatomy and physiology of the digestive system.
- Treatment options and care of dysphagia.
- The reasons for using enteral feeding / PEG tubes.
- Administration of feeds and flushes.
- Potential complications.
- Administration of medicines through a PEG tube.
- Effective mouth care.
- Troubleshooting.

## Erectile Dysfunction & Coronary Artery Disease

eLearning - CCEB083

A significant number of men with erectile dysfunction exhibit early signs of coronary artery disease. Erectile dysfunction precedes coronary artery disease by an average of two to three years. This presents healthcare professionals with a window of opportunity in which to address lifestyle changes and treatments.

### Learning Outcomes:

- Understand the link between erectile dysfunction and coronary artery disease.
- Recognise the extent of the problem.
- Recognise the opportunity to intervene with lifestyle modification advice to men with erectile dysfunction.
- Understand the treatment options available to men with erectile dysfunction.

## Haemodynamic Monitoring

Skills Workshop - 1 day - CCFE092

This one-day course offers a comprehensive guide to all you need to know about haemodynamic monitoring using arterial, central and Swan-Ganz catheters.

### Learning Outcomes:

- Review of cardiac anatomy and physiology.
- Intracardiac pressures.
- LVF & cardiogenic shock.
- Equipment overview.
- Transducer preparation.
- Measuring pulmonary capillary wedge pressure (PCWP) & cardiac output.



## Hay Fever

eLearning - CCEA094

Hay fever, or seasonal allergic rhinitis, is a common allergic condition that occurs when someone inhales pollen. It affects approximately 20% of the UK population.

This short course will provide you with a brief overview of hay fever and is suitable for any non-specialist healthcare professional that deals with patients with hay fever.

### Learning Outcomes:

- What hay fever is and how symptoms manifest.
- The risk factors for developing hay fever.
- The different treatments available to manage hay fever.

## Heart Failure

eLearning - CCEB100

Heart failure is a progressive long term condition which leads to a poor quality of life. With the prevalence and incidence increasing, due to more effective cardiac treatments, it is important for all health care practitioners to understand the disease progression and treatment.

### Learning Outcomes:

- Understand how heart failure affects normal cardiac physiology.
- Be aware of the prevalence of heart failure and the growing burden it represents.
- Distinguish between the types and classification of heart failure.
- Describe the main signs and symptoms in heart failure.
- Understand the aims of specific drug therapies used in heart failure.

## Hepatitis A

eLearning - CCEA101

This short course will provide you with a brief overview of the condition and is suitable for any non-specialist healthcare professional that deals with travellers that are potentially exposed to Hepatitis A.

### Learning Outcomes:

- What Hepatitis A is and how it is transmitted.
- The signs and symptoms of Hepatitis A.
- The measures travellers can take to prevent Hepatitis A.
- The treatment and vaccines available.

## Hepatitis B

eLearning - CCEA102

This short course will provide you with a brief overview of the condition and is suitable for any non-specialist healthcare professional that deals with travellers that are potentially exposed to Hepatitis B.

### Learning Outcomes:

- What Hepatitis B is and how it is transmitted.
- The signs and symptoms of Hepatitis B.
- The measures travellers can take to prevent Hepatitis B.
- The treatment and vaccines available.

## Infection Control for Healthcare Environments

Skills Workshop - 1 day - CCFE104

This full day course will examine the prevalence of healthcare associated infections (HAIs), their causes and preventative measures that may be employed.

### Learning Outcomes:

- Evidence-based practice in infection control.
- Routes of transmission.
- Standard precautions.
- MRSA.
- Infection control and urinary catheter management.
- Infection control in enteral feeding.
- Infection control in IV therapy.

## Infection Control: Clostridium Difficile

eLearning - CCEA107

*Clostridium difficile* is an organism that can be responsible for many cases of diarrhoea in healthcare settings. *Clostridium difficile* outbreaks often necessitate the closure of wards and departments with the associated problems that this creates in busy clinical areas.

### Learning Outcomes:

- Identify the mode of spread of *clostridium difficile* and the signs of infection.
- Identify the factors that predispose an individual to infection.
- Describe the steps that can be taken to minimise the risk of infection.
- Describe the treatment options available once infection has occurred.

## Infection Control: Decontamination

eLearning - CCEA108

Healthcare environmental hygiene is important to ensure that the physical environment does not contribute to infection with microorganisms. While good hand hygiene is important and is most commonly cited as the key to reducing infection it is essential that attention must also be given to the physical environment.

### Learning Outcome:

- Differentiate between cleaning, disinfection or sterilisation and recognise the indications for each as a method of decontamination.

## Infection Control: Enteral Feeding

eLearning - CCEA077

Enteral feeding is a method of artificially feeding patients and is carried out both in hospital and community settings where patients are unable to take food orally or who do not take in a sufficient oral amount to meet their nutritional requirements. Enteral feeding is delivered in a number of ways using different types of tubes each of which presents a risk of infection.

### Learning Outcomes:

- Describe the methods of administering enteral feeding.
- Identify the possible sources of contamination and infection in a feeding system.
- Describe best practice in the storage, reconstitution and administration of enteral feeds.
- Describe best practice in the care of feeding tubes and stoma sites.

## Infection Control: Hand Hygiene

eLearning - CCEA109

Any physical contact with a patient by the hands of healthcare workers brings a risk of transfer of microorganisms from the previous patient or procedure. Hand hygiene has been shown to be the most effective means of reducing the risk of infection.

### Learning Outcomes:

- Describe the role of hand contact in the spread of infection.
- Describe and demonstrate the correct technique for hand decontamination.
- Identify the different hand decontamination agents and hand drying methods that are available.
- Describe the facilities required for proper hand hygiene.

## Infection Control: Intravenous (IV) Therapy

eLearning - CCEA115

The intravenous administration of fluids and drugs (IV therapy) is a common procedure in many healthcare settings. IV therapy is, however, associated with a significant number of potential risks and complications. The potential for microbial contamination remains one of the greatest risks of IV therapy.

### Learning Outcomes:

- Describe the main devices that may be used to administer IV therapy.
- Describe the main routes of infection in IV therapy.
- Describe the technique for the insertion of IV devices and their subsequent care.

## Interpretation of Coagulation Screen

eLearning - CCEB113

This course is suitable for any healthcare professional who is required to interpret the significance of coagulation screens.

### Learning Outcomes:

- The purpose of the coagulation process.
- The indications for anticoagulation therapy.
- The mechanism for haemostasis.
- The significance and normal values for: fibrinogen, prothrombin time, partial thromboplastin time and international normalised ratio (INR).
- The commonly used anticoagulation drugs, their mode of action, normal dosages and side effects.

## Interpretation of Full Blood Count

eLearning - CCEC114

This course is suitable for any healthcare professional who is required to interpret the significance of full blood counts.

### Learning Outcomes:

- The purpose of the blood cells.
- The significance and normal values for blood cells and indices.

## Introduction to Skeletal X-Ray Interpretation

Skills Workshop - 1 day - CCFE117

The course consists of a combination of lectures and supervised practice with the aim of developing the learners' knowledge and skill in the systematic interpretation of x-rays.

### Learning Outcomes:

- Computerised radiology system interpretation.
- Plain film interpretation.
- Common abnormalities of the upper & lower limb.
- This course takes into consideration current legislation associated with the Ionising Radiation (Medical Exposure) Regulations 2000.

## IV Fluid & Drug Therapy

Skills Workshop - 1 day - CCFE118

This one day course will provide an annual update to those staff that are currently competent in the procedure of IV therapy. It will also provide the theoretical and practical skills to enable those new to the skill to embark on a period of supervised practice and assessment of competency.

### Learning Outcomes:

- Professional Aspects of IV therapy.
- Methods of IV drug administration.
- Drug instability and incompatibility.
- Half life.
- Drug calculations (with assessment).
- Anaphylaxis.
- Complications of IV therapy (infection, extravasation, thromboembolism, sharps injury).
- Administration through mid lines and central lines.
- Preparation of bolus, intermittent and continuous infusion drugs.

## Making Sense of Blood Results

Skills Workshop - 1 day option - CCFE120

Skills Workshop - 2 day option - CCFF120

This course is designed to help allied health professionals to have a better understanding of what routine blood tests mean.

The vast majority of blood tests, in routine, emergency and critical care medicine are classified as either haematology and / or biochemistry. Therefore the course content will concentrate on these two major disciplines, breaking down into individual sections and concluding with appropriate case studies each day.

### Learning Outcomes:

- Full Blood Count and associated parameters, ESR, CRP and Film.
- Haemoglobin, erythrocytes, platelets and white cells.
- Types of anaemia and polycythaemia.
- Coagulation and d-Dimers.
- Iron and TIBC.
- Clinical lipidology including cholesterol, triglycerides and HDL.
- Glucose and GTT including HbA1C and fructosamine.
- Renal function tests including uric acid, urea, creatinine and electrolytes.
- Blood pressure hormones including beta aaturetic peptide (BNP).
- Liver function tests including plasma proteins and electrophoresis.
- Bone chemistry, PSA and PTH.
- Thyroid function tests.
- Test requesting patterns and clinical studies.

## Malaria

eLearning - CCEA121

Malaria is a potentially fatal tropical disease that spreads through the bite of mosquitoes that are infected with a parasite called Plasmodium. Malaria is found in over 100 countries throughout the world.

This short course will provide you with a brief overview of the condition and is suitable for any non-specialist healthcare professional that deals with travellers who may be at risk of malaria.

### Learning Outcomes:

- What malaria is and what causes it.
- What the optimal conditions for mosquito breeding are.
- The symptoms of malaria.
- The importance of mosquito bite prevention in preventing malaria.
- Treatments available for malaria prophylaxis.

## Meningitis

eLearning - CCEB135

Meningitis is a life-threatening illness that results in inflammation of the meninges. It is typically caused by infection by microorganisms. Early identification and management are essential to reduce the risk of death or permanent disability from meningitis.

### Learning Outcomes:

- What meningitis is, what causes it and how the microorganisms that cause it are transmitted.
- The symptoms of meningitis.
- How meningitis is diagnosed.
- The treatment of meningitis and vaccines that are available to prevent infections that cause meningitis.

## Minor Injuries Course

Skills Workshop - 3 days - CCFG139

A must for nurses and practitioners in A&E, general practice, occupational health, prison service, ambulance service and nurse-led clinics.

### Learning Outcomes:

- Overview of clinical examination and history taking skills.
- Professional & legal implications of 'autonomous' practice.
- Ionising Radiation (Medical Exposure) Regulations 2000 (IRMER).
- Use of patient group directions (PGD).
- Wound assessment and closure techniques including dressings.
- Management of upper limb minor injuries.
- Management of lower limb minor injuries.

## Motion Sickness

eLearning - CCEA140

This short course will provide you with a brief overview of motion sickness and is suitable for any non-specialist healthcare professional that deals with patients with motion sickness.

### Learning Outcomes:

- What motion sickness is and how it is caused.
- The symptoms of motion sickness.
- Self-help treatments to prevent motion sickness.

## MRSA

eLearning - CCEA142

Recent media coverage has been such that Methicillin Resistant Staphylococcus Aureus (MRSA) has almost acquired celebrity status! This most commonly reported 'superbug' is responsible for a significant number of healthcare associated infections resulting in patient distress and mortality.

### Learning Outcomes:

- Describe nature of MRSA.
- Describe the modes of spread of MRSA.
- Identify the risk factors for MRSA infection.
- Describe the screening methods for MRSA and possible treatment regimes.

## Non-Invasive Ventilation

Skills Workshop - Half day - CCFD209

This course will cover the theory and skills surrounding non-invasive ventilatory support.

### Learning Outcomes:

- Physiology of spontaneous and mechanical ventilation.
- Monitoring respiratory waveforms.
- Modes of mechanical ventilation.
- Non-invasive mechanical ventilation.
- Patient – ventilation interactions.
- Aerosol and oxygen delivery.
- Understanding acute lung injury and acute respiratory distress syndrome.
- Ventilation-associated pneumonia.
- Weaning strategies.

## On-Site Bedside Assessment Course

Skills Workshop - 2 days - CCFF145

Training can be fully tailored to your local requirements. To date, we have delivered custom made training for GP receptionists, support workers and untrained staff.

### Learning Outcomes:

- Urinalysis.
- Recording vital signs.
- Pulse oximetry.
- Peak flow recording.
- Blood sugar measurements.
- Glasgow coma scale (GCS).
- 12-lead ECG.

## Paediatric Life Support

Skills Workshop - 1 day - CCFE147

This course will provide all of the theoretical and practical instruction required to practise basic and advanced life support in children.

### Learning Outcomes:

- Incidence and causes of sudden death in children.
- Basic resuscitation skills.
- Assessment and evaluation skills.
- Advanced life support practise and supervision.
- Drug administration, rhythm recognition, airway management, and defibrillation.



**“The appeal to me was the flexibility of the trainers to meet the needs of the clients. Training was delivered at our own site.**

**The feedback from the staff attending has been excellent, both in content of course and ability of the trainers.”**

*Learner Feedback  
Healthcare Skills Workshop*

## Paediatric Minor Illness Course

Skills Workshop - 2 days - CCFF148

This 2 day course aims to enable delegates to identify a variety of ways in which the ill child presents and feel confident in carrying out a physical assessment.

### Learning Outcomes Day 1:

- Legal and professional responsibilities.
- Anatomy and physiology.
- Psychological development – an overview.
- Taking a history & physical examination (specific to ages 0–14).
- Respiratory system.
- Abdomen.
- Neurological.
- Musculo–skeletal overview.
- Skin assessment.

### Learning Outcomes Day 2:

- Introduction into pharmacology in paediatrics.
- Review of body systems related to presenting conditions of: pyrexia, ear, nose and throat, headache and injury (meningitis), common gastro–intestinal complaints, skin conditions, common minor injuries in paediatrics.

## Pain Management

Skills Workshop - 1 day - CCFE149

The day covers a broad range of pain management topics including the assessment of pain; how painkillers work; misconceptions about pain and pain management; and managing patient controlled analgesia (PCA) and epidural patients safely, effectively and with confidence.

### Learning Outcomes:

- Physiology of the pain pathway.
- Pharmacology of analgesic agents.
- Specialised pain management.
- PCA & epidurals: effective use, problems and safety issues.
- Pain assessment.
- Common misconceptions.
- Real clinical case studies and scenarios.

## Peripheral Venous Cannulation

Skills Workshop - Half day - CCFD151  
eLearning - CCEC150

This course is suitable for any healthcare professional who is involved with intravenous (IV) therapy and requires the skills to undertake the placement of peripheral intravenous cannulae. On completion of the course assessment of competencies should be arranged within the workplace.

### Learning Outcomes:

- Peripheral venous cannulation of the arms.
- The administration of intravenous bolus agents in adults.

## Practical Skills for Support Workers

Skills Workshop - 1 day - CCFE152

This one–day course will provide support workers with expert theoretical and practical instruction on how to perform the following procedures in a safe and skilled manner.

### Learning Outcomes:

- Recording vital signs.
- Blood glucose monitoring.
- Urinalysis.
- 12–Lead ECG recording.

## Pre-Surgical Assessment

Skills Workshop - 3 days - CCFG153

This course will provide the learners with a range of skills and techniques required to safely undertake pre–operative assessment. It will be of particular interest to those involved in setting up nurse–led services in this area.

### Learning Outcomes:

- Taking a clinical history.
- Record keeping and confidentiality.
- 12–lead ECG recording and assessment.
- Urinalysis.
- The chest x–ray.
- Interpretation of common blood results: U&Es, FBC etc.
- Physical examination of: cardiovascular, respiratory, gastrointestinal and nervous systems.

## Psoriasis

eLearning - CCEA155

Psoriasis is a chronic inflammatory skin condition that causes red, silvery, flaky, crusty plaques to appear on the body. It affects about 2% of people in the UK. This short course will provide you with a brief overview of the condition and is suitable for any non-specialist healthcare professional that deals with people with psoriasis.

### Learning Outcomes:

- What psoriasis is.
- The different types of psoriasis.
- What factors contribute to the worsening of psoriasis.
- What treatments are available for psoriasis.

## Rabies

eLearning - CCEA156

Rabies is an acute viral encephalomyelitis caused by the rabies virus. This short course will provide you with a brief overview of the condition and is suitable for any non-specialist healthcare professional that deals with travellers that are potentially exposed to rabies.

### Learning Outcomes:

- What rabies is and how it is transmitted.
- In which areas of the world travellers have a higher risk of contracting rabies.
- The types of rabies and the signs and symptoms.
- The measures travellers can take to prevent rabies.
- The pre and post-exposure vaccines available.

## Respiratory Care Course

Skills Workshop - 2 days - CCFF157

This course addresses assessment techniques used in respiratory diseases and considers the pathophysiology, epidemiology, clinical presentation and management of both acute and chronic respiratory conditions. It will appeal to a wide range of nursing and healthcare professionals who deal with respiratory patients.

### Learning Outcomes Day 1:

- Review of respiratory anatomy and physiology.
- Respiratory assessment.
- Spirometry and peak expiratory flow rate (PEFR).
- Pharmacological considerations.
- COPD: What is it? Exacerbations and management.

### Learning Outcomes Day 2:

- Inhaler techniques.
- Nebuliser therapy.
- Acute oxygen therapy.
- Nutritional support and respiratory disease.
- Asthma: What is it? Exacerbations and management.

## Skin Antisepsis

eLearning - CCEC166

Healthcare associated infection (HCAI) is an important cause of morbidity and mortality and increases the length of stay for hospitalised patients. Invasive procedures are known to increase the risk of developing a HCAI research shows that meticulous attention to skin antisepsis and the use of care bundles can significantly reduce the incidence of HCAI. This course provides the evidence-base for skin antisepsis which when applied in clinical practice can help to reduce the incidence of HCAI.

### Learning Outcomes:

- The role of the skin in the development of HCAI.
- The rationale for using 2% chlorhexidine gluconate in 70% isopropyl alcohol for skin antisepsis.
- The correct technique for pre-procedure skin antisepsis.
- The ongoing care of vascular access devices.
- How cross infection contributes to HCAI and summarise how the risks of cross infection can be reduced.



## Spirometry In Practice

eLearning - CCEC167

This course aims to prepare appropriate healthcare staff to undertake spirometry safely and reliably, and to begin interpreting a spirogram.

### Learning Outcomes:

- Anatomy and physiology.
- Terminology in spirometry.
- Types of spirometers.
- Reference values.
- Patient preparation – suitability, preparation, performing the test.
- Preparing the equipment.
- Interpreting results.
- Common errors and ensuring quality.
- Purpose of spirometry.
- Flow volume loops.
- Reversibility in COPD and asthma.

## Stable Angina

eLearning - CCEC169

This course will be of relevance to any healthcare professional who deals with patients experiencing chest pain and where a subsequent diagnosis of stable angina is made. It will be particularly useful for GPs and Nurses who manage these patients.

### Learning Outcomes:

- Be able to understand the spectrum of chest pain presentations.
- Be aware of the differential diagnoses in patients presenting with chest pain.
- Be aware of the clinical investigations available in assisting diagnosis.
- Be able to understand the range of treatment options available for patients with angina.

## Stroke Management

Skills Workshop - CCFE207 - 1 day

This particular stroke management course is designed for healthcare support workers and nurses.

### Learning Outcomes:

- Pathophysiology of stroke.
- Stroke as an emergency / acute care.
- Nursing competencies.
- Core competencies for health social care staff.
- Specialist competencies for nurses in stroke care.
- Vision / sensory impact.
- Communication issues.
- Swallow / feeding issues.
- Cognition, mobility, movement and balance.
- Rehabilitation issues.
- Discharge planning.
- Secondary prevention.
- End of life care.

## The Law and the Nurse

Skills Workshop - 1 day option - CCFE170

Skills Workshop - 2 day option - CCFF170

An absolute must for nurses working in all areas. More than ever nurses need to be aware of the professional and legal issues that guide their clinical practice. This course is presented by a solicitor specialising in medical and nursing negligence claims and healthcare law.

### Learning Outcomes:

- Current legal issues in nursing practice.
- Issues of consent and confidentiality.
- Nursing documentation – getting it right.
- Expanded roles and the implications for the practitioner.
- Negligence claims and how to avoid them.
- Open forum for attendees.

## Tracheostomy Care

Skills Workshop - 1 day - CCFE171

This one day workshop is an ideal introduction to, or refresher on, the care of a person with a tracheostomy.

### Learning Outcomes:

- The structure and function of both the upper and lower respiratory tract. The function of nose, mouth nasopharynx, oropharynx laryngopharynx, trachea bronchi and alveolar.
- The Physiological control of breathing, gaseous exchange, gas transport.
- The main signs of respiratory disease, how to measure respiratory rate, how to auscultate a chest. Pulse oximetry and cyanosis.
- What a tracheostomy is and the two main types of insertion surgical and percutaneous.
- Different types of tracheostomy and the major characteristics of each: cuffed, uncuffed and fenestrated.
- Care of the patient with a tracheostomy: cuff pressures, stoma care, humidification, suctioning, changing tapes, speaking, eating and drinking, changing a tracheostomy tube, mouth care, inner tubes.
- What to do if the tube blocks, becomes displaced or falls out.

## Trauma Management

Skills Workshop - 1 day option - CCFE172

Skills Workshop - 2 day option - CCFF172

This intensive one-day course provides a graphic overview of the management of these life threatening conditions. It will be of particular interest to paramedics and staff working in trauma and emergency care settings.

Please note that this course contains a number of very graphic images that are necessary to illustrate the nature of these conditions.

### Learning Outcomes:

- Trauma scoring.
- The Glasgow coma score (GCS).
- Head injuries – skull fracture, assaults, subdural bleeds etc.
- Thoracic injuries abdominal injuries.

## Travellers' Diarrhoea

eLearning - CCEA173

Travellers' diarrhoea is a term that is used to describe the passing of watery stools, three or more times a day, during or shortly after travelling. Diarrhoea is a symptom of infection in the gastrointestinal system by an infectious organism.

This short course will provide you with a brief overview of travellers' diarrhoea and is suitable for any non-specialist healthcare professional that deals with patients that suffer from this type of diarrhoea.

### Learning Outcomes:

- What travellers' diarrhoea is and what causes it.
- In which areas of the world travellers are more at risk of developing travellers' diarrhoea.
- The symptoms of travellers' diarrhoea.
- The measures that travellers can take to reduce their risk.
- The treatment options available for travellers' diarrhoea.


## Typhoid

eLearning - CCEZ174

Typhoid fever, sometimes known as enteric fever, is a systemic infection caused by the gram-negative bacillus, *Salmonella enterica* serovar typhi (*S. typhi*). This short course will provide you with a brief overview of the condition and is suitable for any non-specialist healthcare professional that deals with travellers that are potentially exposed to typhoid.

### Learning Outcomes:

- What typhoid is and how it is transmitted.
- In which areas of the world travellers have a higher risk of contracting typhoid.
- The symptoms of typhoid.
- The measures travellers can take to prevent typhoid infection.
- The treatment and vaccines available.



**"The content of the training is tailored to suit the needs of our service users which is designed and delivered by practice based competent clinical professionals.**

**The training assists our healthcare staff in learning the required skills and techniques in order to provide the highest standards of care and support."**

*Learner Feedback  
Skills Workshop*

## Vaccination Programmes

Skills Workshop - 1 day - CCFE177  
eLearning - CCEC177

Immunisation programmes are amongst the most successful public health measures. This programme will be of interest to any healthcare professional who immunises or advises on immunisation.

### Learning Outcomes:

- Understand the professional and legal issues relating to vaccination programmes.
- Understand the importance of proper vaccine storage and handling.
- Identify vaccine-preventable diseases.
- Identify an appropriate anatomical site for vaccination.
- Safely perform a vaccination following a period of supervised practice and assessment of competency.
- Identify the complication associated with vaccination.
- Identify the early signs and symptoms of anaphylaxis and how to manage this emergency condition.

## Venepuncture & Peripheral IV Cannulation

Skills Workshop - Half day - CCFD180  
eLearning - CCEC179

These courses will equip learners with the skills and knowledge required to gain competence in venepuncture, peripheral IV cannulation and arterial blood gas sampling. The skills workshop is predominantly practical and candidates have the opportunity to undergo supervised instruction and practice, using training manikins. On successful completion candidates are required to gain competency under clinical supervision within their own workplace.

### Learning Outcomes:

- Legal and professional issues.
- Review of venous anatomy.
- Vein selection criteria.
- Equipment available: vacuumed systems, 'butterflies'.
- Demonstration of techniques – hints and tips.
- Practical workshop – instruction and supervision.
- Complications, e.g. haematoma, extravasation, needlestick injury etc.

## Verification of Death by Registered Nurses

Skills Workshop - 1 day - CCFE181

The aim of this course is to give a full understanding of the legal and professional issues related to the process of the verification of death. The local policy of the trust can be included in the study day. The course is taught by way of lecture, group discussion and practical demonstration of clinical examination. The attendees also have time to practice the clinical examination elements.

### Learning Outcomes:

- The legal concept of death.
- Certification of death.
- Verification of death.
- Legal and professional issues.
- Sudden death, suspicious circumstances and the role of the coroner.
- Local policy.
- Clinical examination.

## Wound Care & Tissue Viability

Skills Workshop - 1 day option - CCFE206

Skills Workshop - 2 day option - CCFF206

This course is designed for health or social care workers who are required to treat wounds.

### Learning Outcomes:

- Understand the anatomy of the skin.
- Understand the phases of wound healing.
- Wound assessment / types of wounds.
- Barriers to healing.
- Wound infections.
- Wound closure techniques.
- Dressing selection.
- How to treat burns and scalds.
- Escalation in treatment.
- Tissue viability / preventative measures and skin bundles.
- Pressure area / wounds.

## Yellow Fever

eLearning - CCEA182

Yellow fever is a serious viral infection spread by the bite of an infected mosquito. There are an estimated 200,000 cases of yellow fever, causing 30,000 deaths worldwide each year. The infection is largely preventable through appropriate vaccination.

### Learning Outcomes:

- What yellow fever is and how it is transmitted.
- The symptoms of yellow fever.
- The measures travellers can take to prevent yellow fever.
- How vaccination can prevent yellow fever.
- The indications, contraindications and side effects of the yellow fever vaccine.

## Full Course Index

12-Lead ECG in Acute Coronary Syndrome	43	Diabetes Management	26
12-Lead ECG Recording	43	Diabetes Medication	26
Acquired Brain Injury (ABI)	43	Dignity through Action for Care	27
Acute Adult Asthma	44	Diphtheria, Tetanus & Poliomyelitis	49
Acute Coronary Syndromes	44	Display Screen Equipment	11
Acute Medical Emergencies	44	Drug Calculations – Avoiding Errors	49
Acute Surgical Emergencies	44	Early Warning Scoring and Pulse Oximetry	50
Adult Life Support (Advanced)	45	Early Warning Signs Scoring	50
Adult Life Support (Basic)	7	ECG Demystified	50
Adult Life Support (Basic), Manual Handling, Moving & Positioning People	8	ECG Part II	50
Adult Life Support (Intermediate)	7	Emergency Contraception	52
Allergen Awareness	7	End of Life	27
Anaphylaxis & Adult Life Support	8	Enteral Feeding	52
Arterial Blood Gas (ABG) Interpretation	45	Epilepsy Awareness	28
Arterial Blood Sampling	45	Epilepsy Management	28
Assessment of the Older Person	23	Equality and Diversity	11
Atrial Fibrillation & Stroke Prevention	45	Equality and Diversity for Managers	11
Autism Awareness	23	Erectile Dysfunction	28
Business Writing	8	Erectile Dysfunction & Coronary Artery Disease	52
Caldicott Principles for Health and Social Care	23	Fire Safety	11
Cardiac Drugs	47	Fire Warden for Care	13
Cardiac Health	47	First Aid	13
Cardiac Pacemakers	47	Food Safety	14
Care of the Critically Ill Patient	47	Food Safety for Catering (Level 2)	14
Care of the Ventilated Patient	48	Food Safety for Support Workers	16
Chest X-Ray Demystified	48	Haemodynamic Monitoring	52
Child Protection	8	Handling Medicines in Domiciliary Care	29
Chlamydia	48	Hay Fever	53
Clinical History Taking & Physical Examination Skills	48	Health and Safety Awareness	16
Complaints Handling	10	Health and Safety Legislation	16
Conflict Resolution	10	Heart Failure	53
Continence Management	24	Hepatitis A	53
Control of Substances Hazardous to Health (COSHH)	10	Hepatitis B	53
Core Cardiac Education Programme	49	Infection Control: Basic Microbiology & Routes Of Transmission	29
Cystitis In Women	49	Infection Control: Clostridium Difficile	54
Data Protection	10	Infection Control: Decontamination	54
Dementia Awareness	24	Infection Control: Enteral Feeding	54
Dementia in Care	26	Infection Control for Care Workers	29
Deprivation of Liberty	26	Infection Control for Healthcare Environments	53

Infection Control for Support Workers	31	Reporting of Injuries, Diseases and Dangerous Occurrences Regulations (RIDDOR) 2013	18
Infection Control: Hand Hygiene	54	Respiratory Care Course	60
Infection Control: Intravenous (IV) Therapy	55	Risk Assessment in Care	35
Infection Control: Sharps Management	31	Safe Administration of Medication – Advanced	36
Infection Control: The Use Of Protective Clothing	31	Safe Administration of Medication – Foundation	36
Influenza	31	Safeguarding	38
Interpretation of Coagulation Screen	55	Safeguarding Adults at Risk	38
Interpretation of Full Blood Count	55	Safeguarding Young People for Managers	39
Introduction to Skeletal X-Ray Interpretation	55	Safe Use of Bed Rails	39
IV Fluid & Drug Therapy	55	Skin Antisepsis	60
Lone Worker	17	Spirometry In Practice	61
Making Sense of Blood Results	56	Stable Angina	61
Malaria	56	Stroke Management	61
Managing Distressing Behaviour in the Workplace	17	The Care Act	39
Managing Violence & Aggression	32	The Care Certificate	24
Manual Handling / Moving and Positioning People	32	The Law and the Nurse	61
Manual Handling Objects	17	Tracheostomy Care	62
MAR Charts for LloydsPharmacy	32	Trauma Management	62
Medication Administration	34	Travellers' Diarrhoea	62
Meningitis	56	Typhoid	62
Mental Capacity Act & Deprivation of Liberty		Urinary Catheterisation	39
Safeguards (MCA/DOLS)	34	Vaccination Programmes	64
Mentorship	18	Venepuncture & Peripheral IV Cannulation	64
Minor Injuries Course	57	Verification of Death by Registered Nurses	64
Motion Sickness	57	Wound Care & Tissue Viability	65
Moving and Positioning People	35	Yellow Fever	65
MRSA	57		
Non-Invasive Ventilation	57		
Nutrition Awareness	18		
Nutrition & Malnutrition in Older People	35		
On-Site Bedside Assessment Course	57		
Paediatric Life Support	57		
Paediatric Minor Illness Course	59		
Pain Management	59		
Peripheral Venous Cannulation	59		
Practical Skills for Support Workers	59		
Pressure Ulcer Prevention	35		
Pre-Surgical Assessment	59		
Psoriasis	60		
Rabies	60		

**If any courses you require are not listed in this directory, contact us to discuss your requirements.**



**0345 880 1818**



**sales@careshield.co.uk**

## Contact Us:



0345 880 1818



[info@careshield.co.uk](mailto:info@careshield.co.uk)



CareShield Ltd



[www.careshield.co.uk](http://www.careshield.co.uk)



CareShield Ltd



[@CareShieldLtd](https://twitter.com/CareShieldLtd)



CareShield Ltd Registered Office:  
1st Floor, Bank House, Primett Road  
Stevenage, Hertfordshire, SG1 3EE  
Company Registration No. 07046013

CareShield Clinical Ltd  
Company Registration No. 08997387  
Directory Version No. 010615  
All information correct at time of printing.

'CareShield' is a registered trademark. All content in this document © CareShield Ltd, 2015.