

Alerts

Alert Tools ▲ ✕ 🔄

Layer:

Type:

Date/Range:

Alerts List Updating Counts...

HYUNDAI VOYAGER ▲ 🗑️

Matched

Vessels in Baja **on**

February 26th 2015, 09:28:47 UTC

Alerting

With the ShipView Alerting add-in feature, users have more flexibility for monitoring and tracking ships or areas of interest within any maritime domain. Filters can be set up based on specific rules or groups for ship behaviours and automatic alerts can be triggered to deliver the targeting information directly via email or within the Alerts panel in ShipView.

exactShipDB™

exactShipDB provides information about a vessel's different levels of ownerships, its name history and insurance information, as well as detailed vessel statistics and information regarding the vessel's capabilities, giving greater investigative and analytical information to operators for more streamlined workflows. With this extensive information, organisations will be able to reduce the complexities of correlating different data sources and save money by using a single supplier for complete maritime traffic tracking needs.

exactEarth ShipView™

Vessel Information 🔄

IMO Type	IMO No.	Flag	Class
Other Ship	40000	South Korea	Class 0

Registration

IMO	IMO ICP	IMO ICP
40000	2002040101010	2002040101010

Location

Latitude	Longitude	Name	Status
37.0000	122.0000	Hyundai	Underway

Details

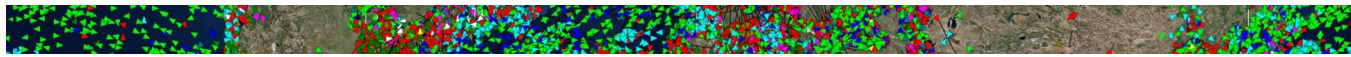
IMO Number	IMO ICP	IMO ICP
40000	2002040101010	2002040101010

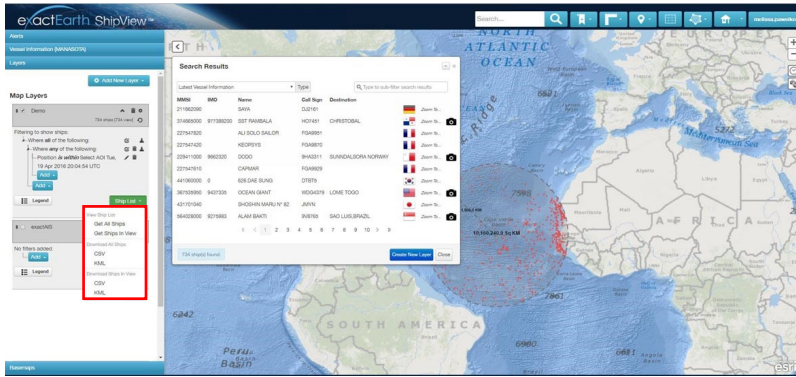
Vessel Capabilities

- Vessel Capabilities
- Name History & Insurance Information
- Ownership
- Ship Image

Layers

Example





Download and Save Data

Users can easily analyse, review or report on ship information while offline. Data sets of ship information, in common formats, can quickly be downloaded for either all ships globally or ships within a current view.

Knowledge Libraries™

Knowledge Libraries give insight into a vessel's Voyage of Life™; its history, its behaviours, its activities, and summarises this vast quantity of information into easy to comprehend facts and figures. The first set of KLS relate to the quality of the data in vessel position reports, providing a streamlined way to assess vessels within an Area of Interest. This service allows an organisation to save time and money by providing the analysis needed for operators to make swift decisions based on a vessel's behaviour and movements, resulting in the most effective use of organisational assets.

