

# The 1<sup>st</sup> to provide a Wandering Resident Solution

Don't Let Your Reputation Walk Out the Door

## 4 & 8 Channel Nurse Consoles



In addition to the distinctive alarm at the exits, a variety of nurse consoles are available to ensure that no alarm goes unnoticed.

- Unique Sound
- Flashing, super-bright LEDs to indicate which exit is in alarm.
- Can be installed at multiple locations
- Interface to remote sounders, strobe lights or other relay-driven devices.

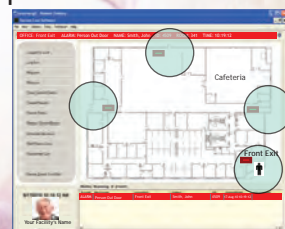


## Door GUARDIAN™ Software:

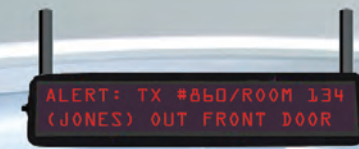


- Quick, straightforward, and easy to use.
- Clear visual display of monitored floor plans and exits
- Near real-time status
- Virtual environment supported
- Simple resident transfers
- Multiple-floor monitoring capabilities

- Displays detailed alarm and alert information including transmitter ID; resident's name, picture and room number; and event location.
- Quick report generation at your fingertips including alarm and alert histories, resident activity logs, staff response times, expired transmitter list, and transmitter reorder information.



Secure Care Products, LLC  
 39 Chenell Drive  
 Concord, NH 03301  
 p: 1.800.451.7917  
 p: +1.603.223.0745  
 f: +1.603.227.0200  
 e: info@securecare.com  
 w: www.securecare.com  
 P/N: P05280690 REV F 08/31/2014







*"...each time Laurel Health Care Company builds a new nursing home facility or acquires an existing nursing home facility, Secure Care is the first vendor we bring on site."*

*~Matt Warren, Manager of PM&R*

### Features & Operation of the 135DE & SC-40DE:



- Allows for normal traffic flow.
- Alarms or locks door when a monitored resident attempts to exit.
- User-programmable escort codes
- Non-volatile memory
- Program to lock/unlock at specified times.
- DE (delayed egress) feature complies with NFPA Life Safety Code 101
- Emergency battery backup
- Reports events to Secure Care's nurse console or PC
- Interfaces with a variety of dry contact driven devices such as magnetic locks, nurse call, pagers, CCTV, Secure Care nurse consoles, fire alarm systems, elevators, etc.

#### Locations Used:

Main entrances with high visitor traffic or exits at which a wanderer/resident may attempt to "tailgate."

### Features & Operation of the 500DE:



- Programmable to lock a door 24/7
- Automatic arm & disarm at specified times
- Does not use transmitters
- Customizable 3-digit codes for easy access and escort
- Reports events to the Secure Care's nurse console or PC
- DE (delayed egress) feature complies with NFPA Life Safety Code 101
- Emergency battery backup
- Interfaces with a variety of dry contact driven devices such as magnetic locks, nurse call, pagers, CCTV, Secure Care nurse consoles/PC, fire alarm systems, elevators, etc.

#### Locations Used:

Doors that are off-limits to residents, such as stairwell doors, employee break areas, and loading docks.

### Features & Operation of the 135ID & SC-40ID:



- Includes all features listed for the 135DE/SC-40DE (above), plus...
- Displays residents by name, location, and transmitter number.
- When used with Door GUARDIAN™ Software, detailed resident and event data can be archived for future report generation.

#### Locations Used:

Ideal for facilities with a large population of residents requiring monitoring. To assist with reducing staff response time, this robust system can identify the resident by name, location, and transmitter number in the event of an alert or alarm. When interfaced with Door GUARDIAN™ Software, the resident's photo will also be displayed.

### Features & Operation of the 135:



- Allows for normal traffic flow
- Alarms when a monitored resident attempts to exit an armed door
- Customizable 3-digit codes for easy access and escort
- Reports events to the Secure Care's nurse console or PC
- Non-volatile memory
- Emergency battery backup
- Interfaces with a variety of dry contact driven devices such as magnetic locks, nurse call, pagers, CCTV, Secure Care nurse consoles/PC, fire alarm systems, elevators, etc.

#### Locations Used:

Doors that do not require our Smartloc magnetic lock, such as automatic doors, elevators, high-traffic staff doors leading to kitchen and laundry areas or a second door in a path of egress that is already locked.



Made in the USA Meets UL Standards

ISO 9001 COMPLIANT FC ® CE