

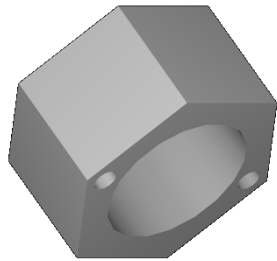


Technical specification

DQ 3.2.1
All. 7 del 26.02.10
Pag. 1 di 1



5 x COS0585
NBR DKAR 00014 V9004
12.42 x 1.68 mm



1 x DMX0007
Stainless steel
Retaining screw



1 x DMX0008
Stainless steel
Sensor housing



Operating recommendations:

Respect the tight torque value, depending on the pressure range.
Run a mechanical stabilization cycle giving twice pressure up to 1.2 times nominal range.

Related document:

Pressure sensors Mounting Proposal (3D_MEM75X-MEM77X.pdf).

| Pressure [bar] | Tight torque [Nm] |
|----------------|-------------------|
| 0.5 to 2 | 0.8 |
| 5 to 20 | 1.5 |
| 50 to 100 | 2.0 |
| 200 to 600 | 2.5 |

| Pagina Seite | Toll. Generale Allgem. | Materiale Mat. | Scala Mass. | | | |
|---|---------------------------|-------------------|----------------|--|---------------|--------------------------|
| 1 di 1 | - | - | - | | | |
| Sensor Housing + Kantseal | | | | A | 07.09.10 | Release |
| | | | | Ind. Zust | Data Datum | Nota Bemerkung |
| Beginner's kit for ME501/505/662/651/75x/77x/780 | | | | Elaborato/bearb. Pietro Satta | | Data/Datum 07.09.2010 |
| | | | | Rilasciato/freigabe L.Salmaso | | Data/Datum 07.09.2010 |
| | | | | Codice Metallux: KIT0400 | | |

The copyright for these drawings and all enclosures personally entrusted to the consignee remains at our company. They are not to be copied, reproduced, shown to third parties and no access can be given to third parties without our approval in writing - METALLUX SA.CH MENDRISIO