

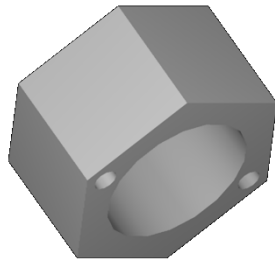


## Technical specification

DQ 3.2.1  
All. 7 del 26.02.10  
Pag. 1 di 1



5 x COS0585  
NBR DKAR 00014 V9004  
12.42 x 1.68 mm



1 x DMX0007  
Stainless steel  
Retaining screw



1 x DMX0008  
Stainless steel  
Sensor housing



### Operating recommendations:

Respect the tight torque value, depending on the pressure range.  
Run a mechanical stabilization cycle giving twice pressure up to 1.2 times nominal range.

### Related document:

Pressure sensors Mounting Proposal (3D\_MEM75X-MEM77X.pdf).

Pressure [bar]	Tight torque [Nm]
0.5 to 2	0.8
5 to 20	1.5
50 to 100	2.0
200 to 600	2.5

Pagina Seite	Toll. Generale Allgem.	Materiale Mat.	Scala Mass.			
1 di 1	-	-	-			
Sensor Housing + Kantseal				A	07.09.10	Release
				Ind. Zust	Data Datum	Nota Bemerkung
Beginner's kit for ME501/505/662/651/75x/77x/780				Elaborato/bearb. Pietro Satta	Data/Datum	07.09.2010
				Rilasciato/freigabe L.Salmaso	Data/Datum	07.09.2010
				Codice Metallux:		
				<b>KIT0400</b>		

The copyright for these drawings and all enclosures personally entrusted to the consignee remains at our company. They are not to be copied, reproduced, shown to third parties and no access can be given to third parties without our approval in writing - METALLUX SA.CH MENDRISIO