

# LABORATORY LABELS

SOLUTIONS & PRODUCTS GUIDE



**Computype**™



## WHO WE ARE

---

Here at Computype, we believe that nothing truly exists without a name. Regardless of your lab size or process, without an accurate tracking system there would be chaos, waste and mistakes. Through the use of barcodes and labels, Computype can assist to accurately and efficiently identify, track and manage your lab assets.

For decades, we've been learning from customers and expanding our lab knowledge so as to best provide dependable, durable labeling solutions for your most demanding applications. As you'll see in the pages to come, we offer a suite of products and services to do just that.

---

## IDENTIFY, TRACK, AND MANAGE LAB ASSETS

### What Do You Want to Label?

Tubes and Vials.....	03
Microwell Plates.....	06
Slides .....	07
Pre-Printed Labels.....	09
Labeling Services .....	10
On-Demand Labels .....	12
Automation .....	15
Integrated Solutions.....	16

# WHAT DO YOU WANT TO LABEL?

## TUBES AND VIALS

Material	Typical Application	CHEMICAL RESISTANCE					ENVIRONMENTAL								
		DMSO	Methanol	Acetone	Isopropyl Alcohol	Xylene	Staining	Oven 500 C	Autoclave 122 C	Incubator 40 C	Refrigerator 4 C	Freezer -20 C	Deep Freeze -80 C	Vapor Phase -120 C	Liquid Nitrogen -196 C
<b>Polypropylene</b>															
TS818	Plastic and glass vials and tubes	✓	✓	✓	✓		✓	✓	✓	✓	✓	✓	✓	✓	✓
TS864	Plastic and glass vials, tubes, and slides	✓	✓	✓	✓		✓	✓	✓	✓	✓				
TS839P	Microwell plates	✓	✓	✓	✓		✓	✓	✓	✓	✓				
<b>Polyolefin</b>															
TS502	Plastic and glass vials and tubes	✓	✓	✓	✓		✓	✓	✓	✓	✓				
<b>Polyester</b>															
TS955	Glass slides	✓	✓	✓	✓	✓	✓	✓	✓	✓	✓	✓	✓	✓	✓
TS526 FLAP	Glass slides	✓	✓	✓	✓	✓	✓	✓	✓	✓	✓	✓	✓	✓	✓
<b>Ceramic</b>															
TS951	Glassware	✓	✓	✓	✓	✓	✓	✓	✓	✓	✓	✓	✓	✓	✓

### CRYO HOLD LIQUID NITROGEN LABELS

For Glass and Plastic Tubes and Vials Exposed to -196°C

- TS818 polypropylene; adheres to frozen glass (wipe off frost before applying)
- Self-adheres and completely wraps around tubes ranging in size from as little as 0.5 ml up to 50 ml
- Withstands both direct and vapor liquid nitrogen exposure and an autoclave
- Resistant to solvents such as DMSO, methanol, isopropyl alcohol, etc.

Kit P/N	Label Size	Image Size	Printer Type	Labels / Roll
1020386-1	0.5" x 1.8"	0.5" x 0.75"	Desktop	1400
1020386	0.5" x 1.8"	0.5" x 0.75"	Industrial / High-Performance	3000
1020388-1	0.68" x 2.5"	0.68" x 1.0"	Desktop	1000
1020388	0.68" x 2.5"	0.68" x 1.0"	Industrial / High-Performance	2000
1020390-1	1" x 2.625"	1.0" x 1.0"	Desktop	950
1020390	1" x 2.625"	1.0" x 1.0"	Industrial / High-Performance	2000
15298936	1" x 2.28"	1.0" x 1.0"	Desktop	1150
15298937	1" x 2.28"	1.0" x 1.0"	Industrial / High-Performance	2400



Blank Cryo Hold Liquid Nitrogen Label



Printed Cryo Hold Liquid Nitrogen Label



Applied Cryo Hold Liquid Nitrogen Label

### YOU SHOULD KNOW

Need something you don't see? Or have an idea that would really help your lab run more efficiently? Let us know. Most of what you'll see in this catalog started as a customer brainstorm!

NOTE: All blank labels are kitted with matched ribbon and cleaning wipe.

# WHAT DO YOU WANT TO LABEL?

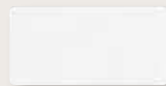
## TUBES AND VIALS

### CRYO HOLD FREEZER LABELS

For Tubes and Vials Exposed to -80°C

- TS502 polyolefin
- Resistant to solvents such as DMSO, methanol, isopropyl alcohol, etc.
- Configured for desktop or industrial thermal transfer printers
- Fits diameters of 0.5 ml to 24 ml

Kit P/N	Label Size	Printer Type	Labels / Roll
1003121	1" x 0.5"	Industrial / High-Performance	9400



Blank Cryo Hold Freezer Label



Printed Cryo Hold Freezer Label

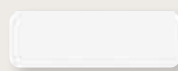


Applied Cryo Hold Freezer Label

For Tubes and Vials Exposed to -80°C

- TS864 polypropylene
- Resistant to solvents such as DMSO, methanol, isopropyl alcohol, etc.
- Configured for desktop or industrial thermal transfer printers
- Fits diameters of 0.5 ml to 50 ml

Kit P/N	Label Size	Printer Type	Labels / Roll
1013646	0.75" x 0.5"	Industrial / High-Performance	9400
1004938-1	1" x 0.5"	Desktop	4400
1004938	1" x 0.5"	Industrial / High-Performance	9400
1020270-1	1.5" x 0.75"	Desktop	2500
1020270	1.5" x 0.75"	Industrial / High-Performance	6700
1004939-1	2" x 1"	Desktop	2500
1004939	2" x 1"	Industrial / High-Performance	5225
1020272	3" x 1"	Industrial / High-Performance	5225



Blank Cryo Hold Freezer Label



Printed Cryo Hold Freezer Label



Applied Cryo Hold Freezer Label

NOTE: All blank labels are kitted with matched ribbon and cleaning wipe.

# WHAT DO YOU WANT TO LABEL?

## TUBES AND VIALS

### CRYO HOLD FREEZER BULLET LABEL

For Microcentrifuge Tubes Exposed to -80°C

- TS864 polypropylene
- Resistant to solvents such as DMSO, methanol, isopropyl alcohol, etc.
- Configured for desktop or industrial thermal transfer printers
- "Bullet" shape to fit 1.5 ml to 2.0 ml centrifuge tubes

Kit P/N	Label Size	Printer Type	Labels / Roll
1004791	1.2" x 1.5"	Industrial / High-Performance	3475
1005234-1	1.2" x 1.5"	Desktop	1700
1005234	1.2" x 1.5"	Industrial / High-Performance	3400



Blank Cryo Hold Freezer Bullet Label



Printed Cryo Hold Freezer Bullet Label



Applied Cryo Hold Freezer Bullet Label

NOTE: All blank labels are kitted with matched ribbon and cleaning wipe.

# WHAT DO YOU WANT TO LABEL?

## MICROWELL PLATES

### PLATE LABELS

Suitable for Automatic Application

- TS839P polypropylene
- Holds up to -80° C freeze / thaw cycles and an autoclave
- Resistant to solvents such as DMSO, methanol, isopropyl alcohol, etc.
- Configured for desktop or industrial thermal transfer printers
- Custom version also available with paper liner

Kit P/N	Label Size	Printer Type	Labels / Roll
1004567-1	2" x 0.25"	Desktop	7000
1004567	2" x 0.25"	Industrial / High-Performance	14,000
1004524-1	2.5" x 0.25"	Desktop	7000
1004524	2.5" x 0.25"	Industrial / High-Performance	14,000
1004522	2.75" x 0.25"	Industrial / High-Performance	14,000



Blank Polypropylene Plate Label



Printed Polypropylene Plate Label



Applied Polypropylene Plate Label

NOTE: All blank labels are kitted with matched ribbon and cleaning wipe.

# WHAT DO YOU WANT TO LABEL?

## SLIDES

### SLIDE LABELS

For Glass Slides Exposed to Chemical Processing

- TS955 polyester slide labels—capable of holding up to direct immersion in xylene, DMSO, methanol, isopropyl alcohol, etc.
- TS526 polyester FLAP labels—the tab is adhered over the image to help protect it throughout the life of the slide

Material	Kit P/N	Label Size	Printer Type	Labels / Roll
TS955	1004781-1	0.875" x 0.875"	Desktop	2800
TS526 FLAP	1020384	0.875" x 0.875"	Industrial / High-Performance	500



Blank Slide Label



Applied Slide Label



Printed Slide Label

NOTE: All blank labels are kitted with matched ribbon and cleaning wipe.



## PRE-PRINTED LABELS

Labels pre-printed and customized for your end-use environment are often the most cost-effective solution available. We maintain sequence integrity to ensure there are no duplicates, no sequence gaps and no missing labels.

### YOU SHOULD KNOW

Depending upon your requirements, we use thermal transfer or digital offset printing to produce pre-printed labels. Our vision-based inspection system, used in conjunction with digital offset printing, allows us to verify that:

- Every symbol on every label set is automatically scanned multiple times
- Each decoded number is within the range of numbers requested and is not duplicated
- All the symbols are in the correct position on the Web
- The symbols are scannable and decode accurately
- There is no gap in the sequence

Ensure labels remain affixed exactly how you need them with our variety of adhesive options:

- Permanent single
- Double "piggyback"
- Removable
- Patterned / deadened
- Custom
- FDA compliant
- Chemical and cold resistant

Custom color and graphics are available:

- Logos
- Warning symbols
- Color coding; sequential and variable color

# LABELING SERVICES

## LABEL EASE™



Many labs would like to entirely avoid the time and costs of labeling, so they turn to our hassle-free Label Ease program. Ready-to-use pre-labeled labware for tubes, vials, slides or other containers can be delivered right to your door. They're even packaged sequentially.

Beyond pre-labeling, some customers ask us to kit all the items they routinely send out to their clients. Any mix of forms, pre-labeled labware and other appropriate items can be packaged in a consistent and professional manner—one less thing for you to think about.

## YOU SHOULD KNOW

### Label Ease with Pressure-Sensitive Labels

- Labels are scannable and packaged sequentially to your specifications
- No duplicates or unreadable barcodes
- Withstands damaging conditions such as cryogenic storage

### Label Ease with Ceramic Labels

- Labels are scannable and packaged sequentially to your specifications
- No duplicates or unreadable barcodes
- Permanently fired onto glass surfaces; most durable identification possible

### Kitting

- Pre-labeled labware + any other associated items
- Packaged in a controlled environment to your specifications



## TARE-WEIGHING

The Tare-Weighing Service pairs with Label Ease to take the time-consuming task out of your lab and into the hands of our labeling experts.

Performed in a focused, controlled environment, the Tare-Weighing Service offers outstanding accuracy and consistent precision. Thanks to state-of-the-art equipment and software, you can expect full traceability to international standards and a spreadsheet data summary.

# ON-DEMAND LABELS

On-demand labels arrive ready to be printed, and are kitted with the optimum ribbon to ensure the best label performance in your environment.

## YOU SHOULD KNOW

- Computype kits label materials with the right ribbon to ensure environmental endurance
- Die-cutting blank label stock must be done precisely for easy removal from liner
- Any thermal transfer printer is only as good as the blank label stock it uses
- Partial pre-prints (logos, color stripes, etc.) can enhance an on-demand printed label

## HOW IT WORKS

Successful on-demand label printing requires a few simple, but important components:



### Blank label stock + Matched ribbon

Kitted in shrink-wrapped rolls, sheets or pads, accompanied by the correct ribbon, our blank label stock enhances your identification system.

### Application-appropriate printer

Based on the needs of your project, we will recommend the best brand and model. The short summary below offers an overview of on-demand label printer options.

#### Desktop printers

- Compact
- Simple to operate
- Budget-friendly
- Good image quality
- Limited to smaller outside diameter label rolls

#### Industrial thermal transfer printers

- Larger
- High-capacity
- Accommodates larger label roll sizes
- Available with high-resolution print-heads (600 dots per inch)
- Best image quality
- Capable of printing linear and 2D barcodes

## PRINTERS



### ZEBRA GX430T

Footprint	6.75" x 6" x 8.25"
Resolution	300 dpi
Cost	\$
Summary	Low cost, small footprint, easy to use



### CAB EOS

Footprint	7.4" x 12.6" x 10"
Resolution	300 dpi
Cost	\$
Summary	Low cost, small footprint, easy to use



### CAB MACH 4

Footprint	12.2" x 17.1" x 9.7"
Resolutions	300, 600 dpi
Cost	\$\$
Summary	Mid-sized footprint, handles larger rolls, easy to use



### CAB A4+

Footprint	10.7" x 17.5" x 9.5"
Resolutions	300, 600 dpi
Cost	\$\$\$
Summary	Mid-sized footprint, handles larger rolls, easy to use



### CAB XC6

Footprint	15.5" x 21.8" x 14.1"
Resolution	300 dpi
Cost	\$\$\$\$
Summary	Two-color thermal transfer printer, ribbon saver for color least used, handles larger rolls, stores many label formats

NOTE: Additional printer models are available.





## AUTOMATION

Whether it's tubes, plates or slides, the manual process of labeling labware can be tedious and time-consuming. Fortunately, Computype offers a range of automation options to assist in automating your sample identification process. Based on the complexity of your needs and your labeling volume, we'll recommend the best unit to increase throughput in your lab.

### COMMON USES

SURFACE	TYPE OF APPLICATION	OPTIONS AVAILABLE
Flat plastic	Microwell plate	Manual present & auto print-and-apply
Flat glass	Microscope slide	Manual present & auto print-and-apply
Cylindrical plastic	Vial	Manual present & auto apply; Walk-away print-and-apply
Cylindrical glass	Tube	Manual present & auto apply; Walk-away print-and-apply
Multiple flat or curved surfaces simultaneously	Slides, tubes	Manual present & auto print-and-apply

*NOTE: Custom applicators are available.*

# INTEGRATED SOLUTIONS

Your lab information system may need help with barcode data collection—that's where we come in. We provide custom interfaces and leverage hardware capabilities to deploy barcode scanning throughout the lab.

From inexpensive hand-held devices, to scanner-equipped PDTs, we have the products and expertise you need to get the results you want.

## SOFTWARE

In addition to custom interface and print station software that Computype develops, we also provide premier off-the-shelf software:

### FreezerWorks

A complete sample management program that eliminates the guesswork from sample identification and location. It's configurable to meet your specific data requirements and features an audit trail that tracks entries, updates and deletions by user.

### NiceLabel

A powerful what-you-see-is-what-you-get (WYSIWYG) software package with label design capabilities, as well as sequence tracking and other database functionality.

## SCANNERS

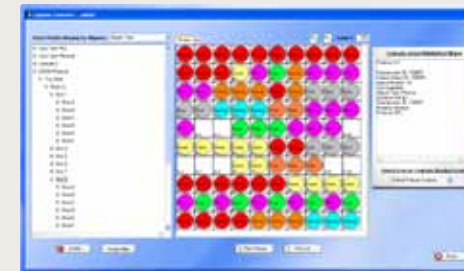
At Computype, we ensure that our labels are scannable, in sequence and not duplicated. That's why we offer a selection of scanners that are as reliable as our labels.

Hand-held linear scanners, both laser and CCD, are robust, reliable and cost-effective. With few (if any) moving parts, these scanners will perform well in any demanding lab environment.

Hand-held 2D scanners will decode two-dimensional symbologies (such as DataMatrix) quickly and reliably. Many are available in wireless models so scanning can be done at the location of the samples, rather than transporting the samples to the scanner.

Portable Data Terminals (PDT's) come with sophisticated features, wireless communication capabilities, and a choice of monochrome or color LCD screens.

## SOFTWARE



### FREEZERWORKS

Maintain complete chain-of-custody for all samples you receive, store, test and ship with FreezerWorks— over 2,000 user-defined fields with search capability on any combination of fields.

## SCANNERS



### DENSEI CCD

Form Factor	Handheld + stand
Symbology Types	Linear only
Cost	\$



### HONEYWELL LASER

Form Factor	Handheld + stand, available corded or cordless
Symbology Types	Linear and stacked; no matrix
Cost	\$



### MOTOROLA IMAGER

Form Factor	Handheld + stand, available corded or cordless
Symbology Types	All stacked & matrix + linear
Cost	\$\$



### MICROSCAN HS-21

Form Factor	Handheld + stand
Symbology Types	2D, stacked and linear
Cost	\$\$\$

NOTE: Additional scanner models are available.

---

## LABELING SOLUTIONS FOR LIFE SCIENCES

In its over 40 years in the barcode identification business, Computype has created high-quality labeling solutions for industries like these:

- Labware / Laboratory Supply
- Instrumentation
- Diagnostic Kits
- Research Organizations
- Biorepositories
- Pharmaceutical
- Biotechnology
- Medical Device

With coverage all over the world, we're sure we can assist your lab to better and more efficiently name, track, and organize your assets and samples. Visit our website to meet your local representative and learn more.

[www.computype.com/lifesciences](http://www.computype.com/lifesciences)



### WE'D LOVE TO HEAR FROM YOU.

---

Computype  
2285 West County Road C  
St. Paul, MN 55113-2567  
Phone: 800-328-0852 | 651-633-0633  
Fax: 651-633-5580  
Email: [sales@computype.com](mailto:sales@computype.com)  
Twitter: [@computype](https://twitter.com/computype)

[www.computype.com](http://www.computype.com)

Computype  
Kingswood Business Park, Connaught Road  
Kingston Upon Hull  
HU7 3AP  
United Kingdom  
Phone: [44] 1482-835366  
Fax: [44] 1482-831152 421-606  
Email: [contactus@computype.com](mailto:contactus@computype.com)

[www.computype.com/en-gb](http://www.computype.com/en-gb)

LS0901.r2.1213