

2593 sq. ft.

*shown in French Country Elevation*



# SUTTON

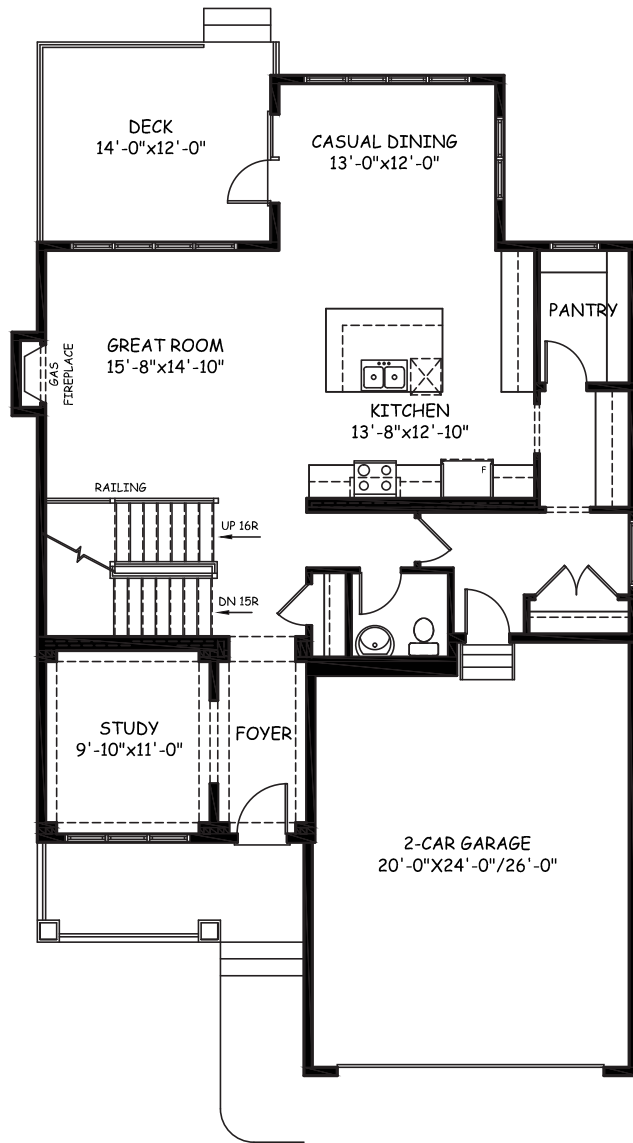
While the effect from the curb is of a proud, elegant manor, you'll find that the Sutton's traditional, timeless architecture gives way to an impressive hub of activity within, perfectly planned for contemporary family life. Visions of the bustling day-to-day and jubilant gatherings are the inspiration behind the open concept, highly efficient floor plan of the Sutton.

Your home is sure to stay tidy and well stocked, thanks to the ample storage space found upon entering via the double car garage. Tucked away from the whirr of the main living space, a well proportioned study

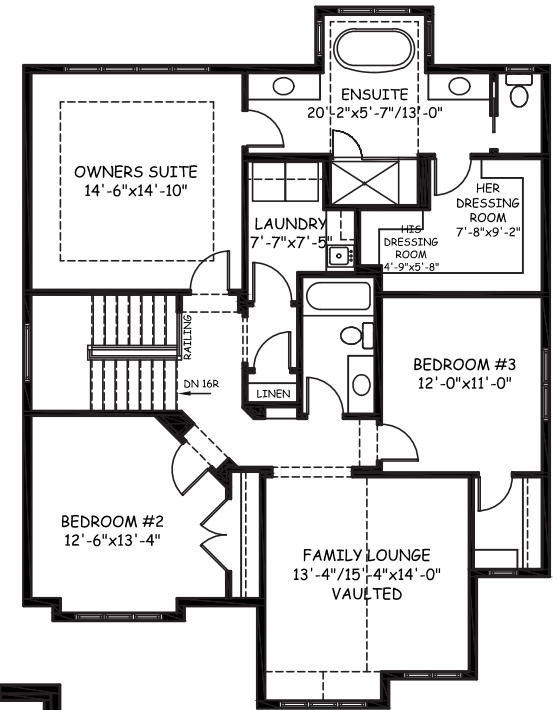
overlooks the front garden. A large, multipurpose central island, charming fireplace and an oversized rear deck complete this idealistic main floor living space.

Upstairs, luxury and sensibility merge with a vaulted lounge, two sizable bedrooms and smart laundry and storage space. The immaculate master suite includes a gorgeous ensuite, as well as his and her dressing rooms. Allow your imagination to run wild with the possibility of a developed basement adding close to another 900 sq. ft. of customized space.

MAIN FLOOR 1221 sq. ft.



UPPER FLOOR 1372 sq. ft.



OPTIONAL BASEMENT DEVELOPMENT 886 sq. ft.

