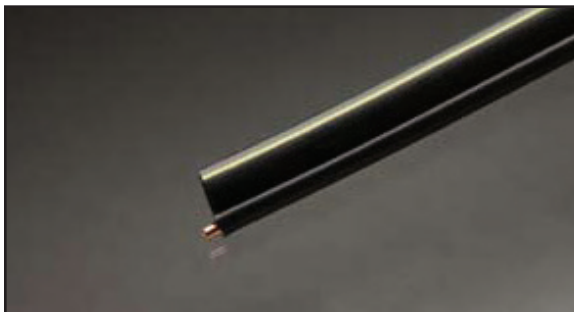


# Aerial Microduct



Aerial Microduct is a self supporting microduct for the routing of cables and optical fibers over aerial routes manufactured with a UV stabilized engineered polymer.

Aerial Microduct has a low-friction lining (DVC™) to assist in pulling, blowing and pushing in fiber or cable.



## Advantages

- Strippable strength member for ease of installation
- Designed for self-supporting aerial routes
- Ultra tough
- DVC™ ultra low friction lining aiding fiber install
- Very high crush and tension resistance
- Compatible with all microduct, fiber and cables
- Class-leading push and blow ability

## Compatibility List

Aerial Microduct is compatible with:

- QuikPush products compatible
- Low friction lining (DVC™) for excellent blow, push and pull properties
- Industry standard push-fit connectors
- Compatible with all microduct, fiber and cables

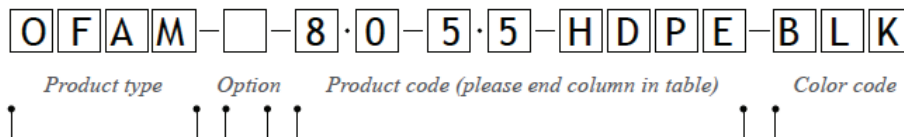
## Applications

- FTTh/FTTx - Outdoor
- Telecoms

Product Specifications			
Material	Property	Best for...	Color
PBT	Hardest & toughest outdoor material, some UV resistance	All general applications	BLK, WHT
PA12	(Nylon) Hardest & toughest indoor material, European LSZH	Frequently accessed ODFs needing extra protection	WHT
MDPE	Standard cable jacket material	Aerial	BLK
HDPE	Harder & denser than MDPE	Direct bury	ORG
PVDF	Used for indoor & outdoor applications. Meets US fire ratings (OFNR)	Indoor use especially building risers	WHT
PP	Basic most cost effective grade	Protecting fiber in cabinets	ALL
PEMX	Specialized LSZH & riser material	Indoor use especially building risers	WHT, BLK

• ISO9001 Production, REACH, ROHS, Certificate of Origin, EN 50411-6-1, IEC 60794-5

## Enquiry Information: Code Builder



Product Type

OFAM = Optical Fiber Aerial Microduct

Option

P = Pullcord

Unique Product Code

e.g. 8.0-5.5-HDPE  
(end column)

Color Code

(check availability)  
BLK = Black

## Pre-fibered Drop Duct Product List

Material	OD	ID	Crush	Tension	Nominal Weight	Bend Radius	Bend Radius	Install Temp	Product Code
	(mm)	(mm)	(n)	(n)	(kg/km)	(Passive)	(Active)	(Celsius)	
HDPE	8.0	5.5	2000	1000	40.9			-10 to +60	8.0-5.5-HDPE

Environmental Conditions:				
Operating Temperature: -40°C / +70°C	Install Temperature: -10°C / +60°C	Wind Speed: 130 km/hr	Ice Loading 5mm radial	Ice & Wind 5mm radial and 80 km/hr

## Contact

World Headquarters: 6176 E. Molloy Rd. East Syracuse, NY 13057 U.S.A.  
Email: [customerservice@ppc-online.com](mailto:customerservice@ppc-online.com) Tel: +1 315-431-7200 Toll Free: 1-800-800-6652