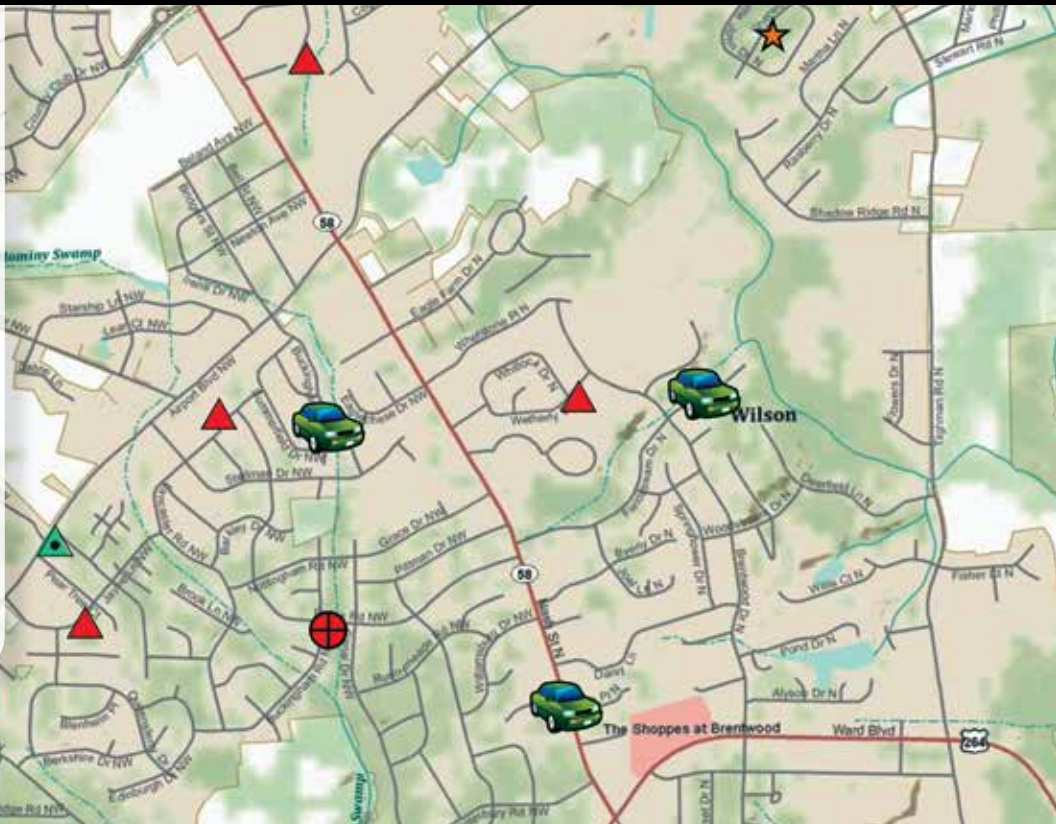




the next generation of  
fiber management and geospatial analytics

Reduce Churn  
Improve Response Time  
Decrease Truck Rolls  
Analyze Capacity  
Boost Revenue  
Predict Demand  
Improve Efficiency  
Streamline Work Force  
Management

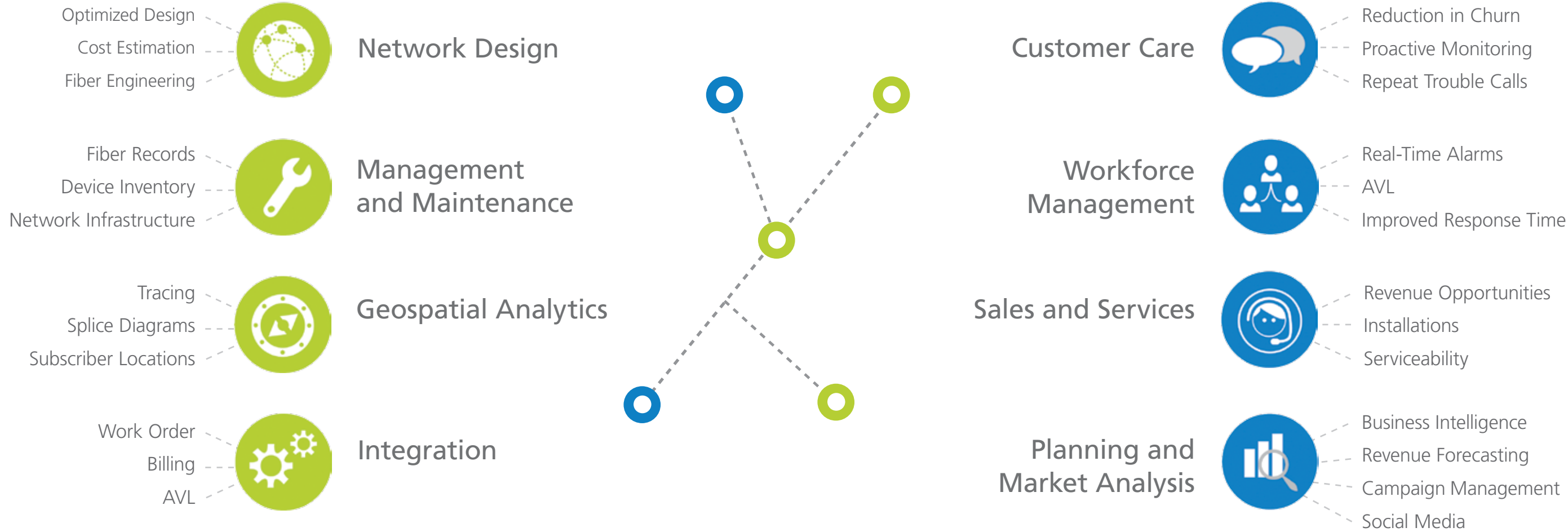


IMPROVE   ENHANCE   INCREASE   PREDICT   BOOST   OPTIMIZE

# An end-to-end telecom mapping solution that integrates to B/OSS systems

## Plan, Design, and Maintain Your Fiber Network.

## Manage, Monitor, and Monetize Your Fiber Network.



From the NOC to the home, Vision360 gives users the ability to design, track, edit, and manage fiber infrastructure. Offers community owned broadband, municipalities, and FTTx providers all the necessary tools to successfully manager their network.

Vision360 is the only solution that integrates real-time subscriber data, billing records, fiber and network element information, and workforce management into one easy-to-use, customizable GIS browser platform.

### Splice Diagram | Enclosure Name: H4003A2.1

(Generated: 8/19/2014 2:23PM)

From FDH stub Strand: 20 to H4003A2.2	Disposition: Available
H4003A2 Strand: 1	Uncut Strand
From FDH stub Strand: 21 to H4003A2.2 <th>Disposition: Available</th>	Disposition: Available
H4003A2 Strand: 2	Uncut Strand
From FDH stub Strand: 22 to H4003A2.2 <th>Disposition: Trayed in NAP</th>	Disposition: Trayed in NAP
H4003A2 Strand: 3	Uncut Strand
From FDH stub Strand: 23 to H4003A2.2 <th>Disposition: Trayed in NAP</th>	Disposition: Trayed in NAP
H4003A2 Strand: 4	Uncut Strand
From FDH stub Strand: 24 to H4003A2.2 <th>Disposition: Trayed in NAP</th>	Disposition: Trayed in NAP
H4003A2 Strand: 5	Uncut Strand
From FDH stub Strand: 25 to H4003A2.2 <th>Disposition: Maintenance Spare</th>	Disposition: Maintenance Spare
H4003A2 Strand: 6	Uncut Strand
From FDH stub Strand: 26 to H4003A2.2 <th>Disposition: Available</th>	Disposition: Available
H4003A2 Strand: 7	Fusion Splice

### Estimation Cost | Scenario One

Feature Type	Item Number	Item Description	Quantity	Unit Cost	Total Cost
Fiber Feeder	725-023-00013	288F sm ADSS Cable	41,409	\$2.23	\$92,532.55
Fiber Feeder	725-023-00050	6F sm ADSS Cable	6,129	\$0.21	\$1,294.44
Fiber Feeder	725-023-00014	48F sm ADSS Cable	734	\$0.51	\$371.18
Fiber Feeder	725-023-00015	12F sm ADSS Cable	363	\$0.33	\$118.41
Fiber Feeder	725-023-00046	24F sm ADSS Cable	376	\$0.37	\$139.83
Fiber Distribution	725-023-00014	48F sm ADSS Cable	2,718	\$0.51	\$1,389.66
Fiber Distribution	725-023-00046	24F sm ADSS Cable	1,408	\$0.37	\$523.64
Fiber Distribution	725-023-00015	12F sm ADSS Cable	474	\$0.33	\$154.62
Fiber Distribution	725-023-00050	6F sm ADSS Cable	1,262	\$0.21	\$266.53
Fiber Drop	725-023-00045	2F sm ADSS Cable, 25G	1,141	\$0.15	\$165.67
Fiber Drop	725-023-00015	12F sm ADSS Cable	481	\$0.33	\$156.90

### Work Orders Assigned to:

Category	Count
NEW WORK	1
NEW WORK - CHANGING	1
NEW WORK - TROUBLE	1
NEW WORK - TROUBLE	1
NEW WORK - TROUBLE	1
NEW WORK - TROUBLE	1
NEW WORK - TROUBLE	1
NEW WORK - TROUBLE	1
NEW WORK - TROUBLE	1
NEW WORK - TROUBLE	1

### Alarms by Type:

Type	Count
ALARM	1
ALARM	1
ALARM	1
ALARM	1
ALARM	1
ALARM	1
ALARM	1
ALARM	1
ALARM	1
ALARM	1

### Sales by Month:

Month	Sales
September - 2013	120
November - 2013	100
March - 2013	80
July - 2013	60
January - 2013	110
December - 2013	150
April - 2013	100

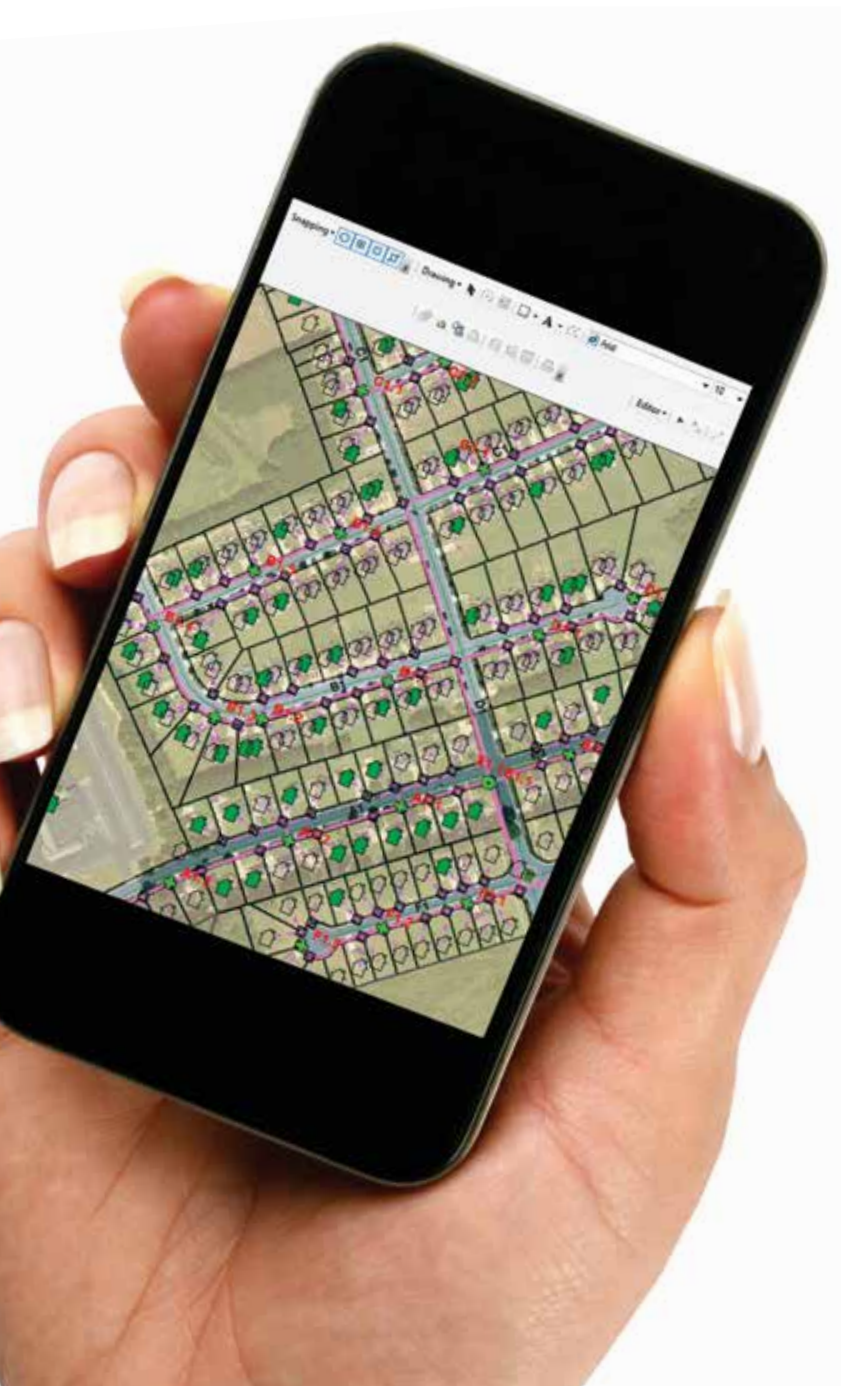


## ABOUT ETI

A global leader in communications technology and services for over 20 years, **ETI Software Solutions** delivers the tools telecom providers need to manage complex systems more efficiently, reduce operating costs and ensure optimal quality of service.

## ABOUT GTG

**Geographic Technologies Group, Inc. (GTG)** is one of the country's leading full service GIS consulting companies. GTG's corporate headquarters is located in North Carolina, with regional offices in Florida and Texas. GTG has secured state, national, and international awards for software solutions and consulting services.



Toll Free: 800.331.1078  
[etisoftware.com](http://etisoftware.com)



GEOGRAPHIC  
TECHNOLOGIES  
GROUP® 



ArcGIS for  
Local Government  
Specialty



ArcGIS Online  
Specialty

