

Enhancing Your Asset Management by Leveraging IBM Maximo Spatial

November 17, 2011



**Cohesive
Information
Solutions Inc.**

IBM

**Premier
Business
Partner**

IBM

Today's Topics

- What is Maximo Spatial
 - High Level Architecture
- Using Spatial
- Configuration Capabilities
- Use Case
- Where can we go?

What is Maximo Spatial?

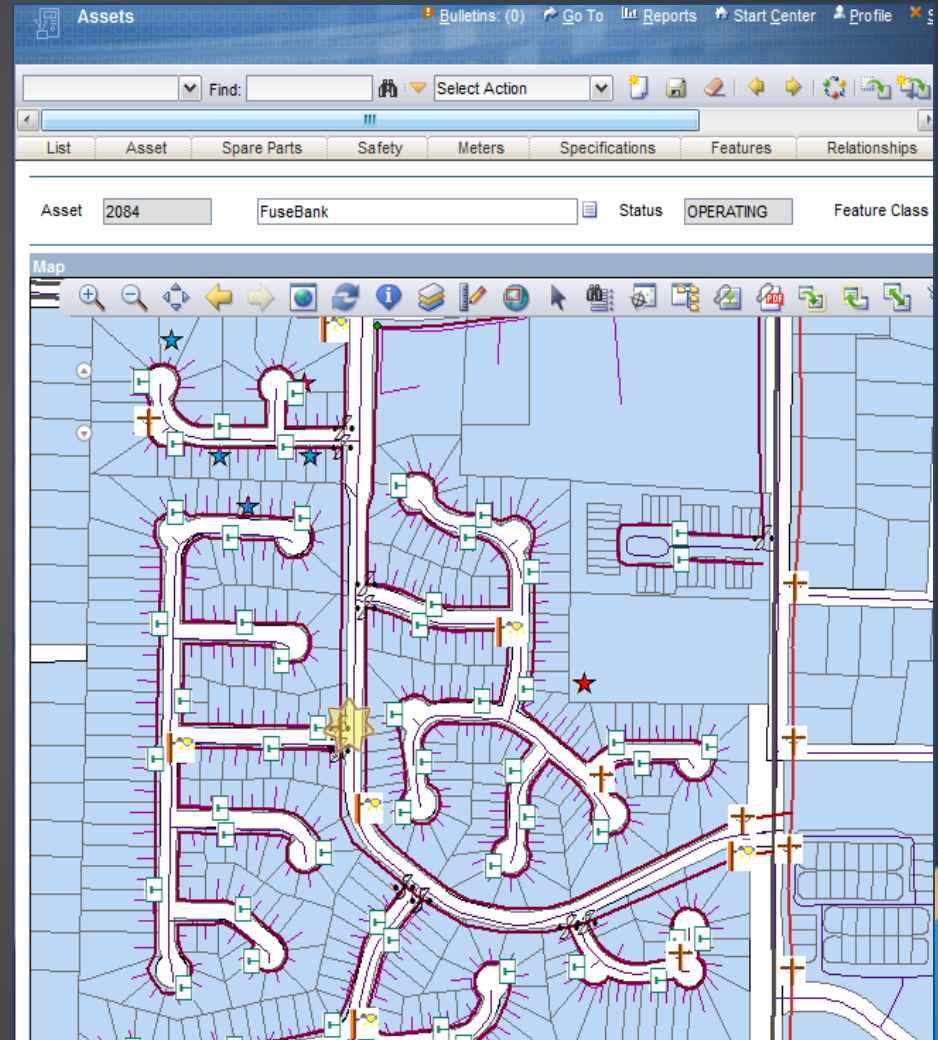
Introduction



**Cohesive
Information
Solutions** Inc.

Spatial: Maximo Asset Management plus ESRI ArcGIS

- Spatial creates a **live** link between Maximo and ESRI GIS.
- Spatial serves organizations who's assets spread over large areas outside the four walls of a factory or plant.
- Maximo screens are enhanced with a **Map Tab** to allow Assets and Work to be plotted on interactive maps.

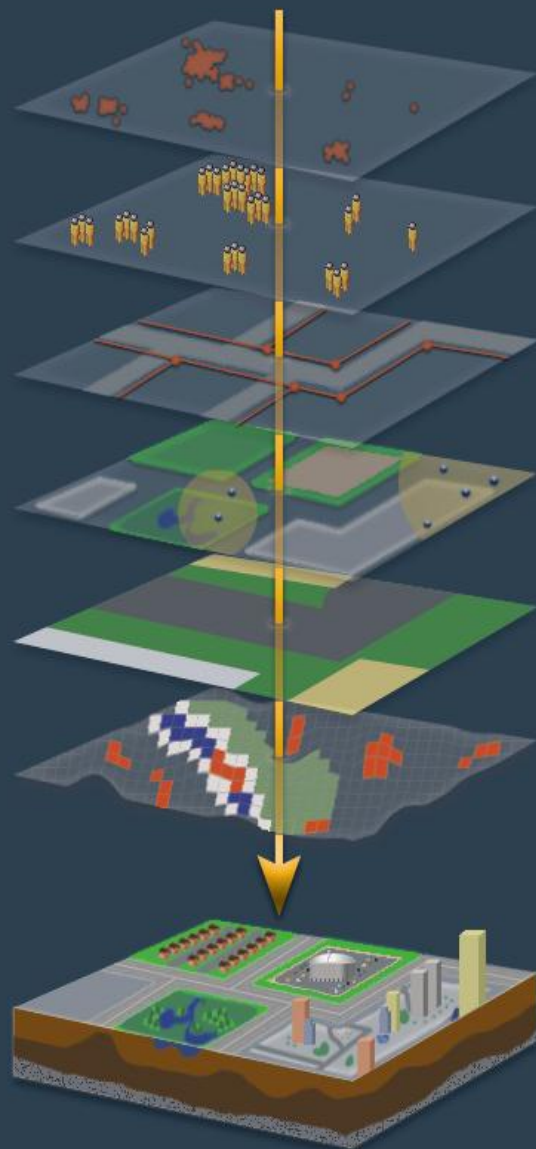


OK. What's the big deal?

- Adding GIS maps to Maximo allows users to see **where** assets are and **where** work gets done.
- Spatial exposes attributes housed in GIS to Maximo for display, use, and editing. (*and vice versa...*)
- One strength of GIS is **analytics**. Now data in Maximo can be analyzed for **geographic relationships** and **trends**.
 - Ex. View failure codes by region.
- For GIS, Maximo adds the ability to **archive** and collect **trending** data that would be difficult for GIS to maintain.

What relates these layers?

Location



Work

Customers

Assets

Crews

Emergency Centers

Hazards

Cohesive Map



Where Does Spatial Fit?

Maximo Desktop User



ArcGIS Desktop User



Maximo
Add Ons
T&D, Nuclear,
ACM

Maximo

SPATIAL

ArcGIS

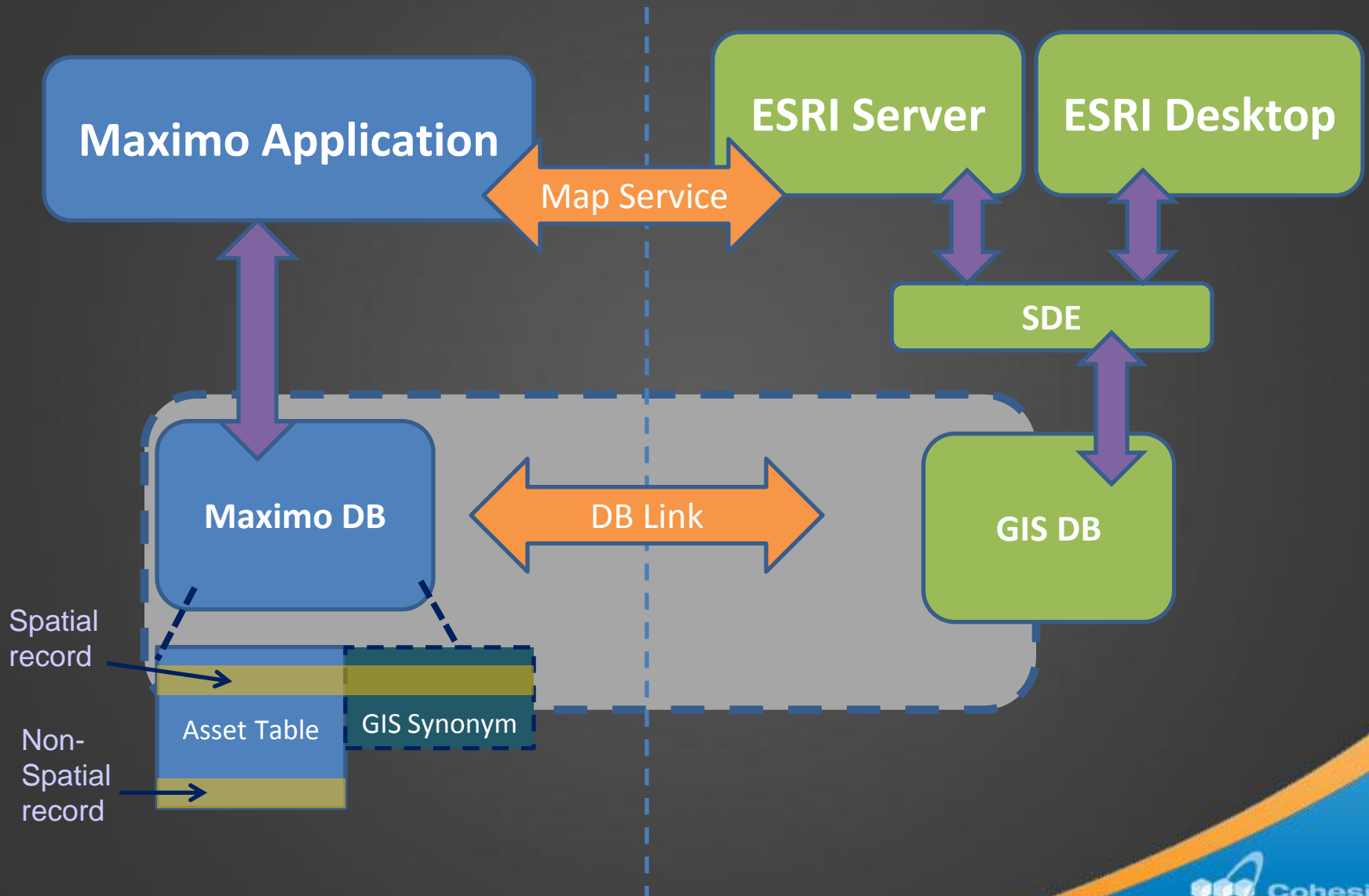
GIS "Add
Ons"
Telvent,
Powell, 3GIS

Mobile Maximo

Mobile ArcGIS

Mobile User

Spatial High Level Architecture



Using Spatial

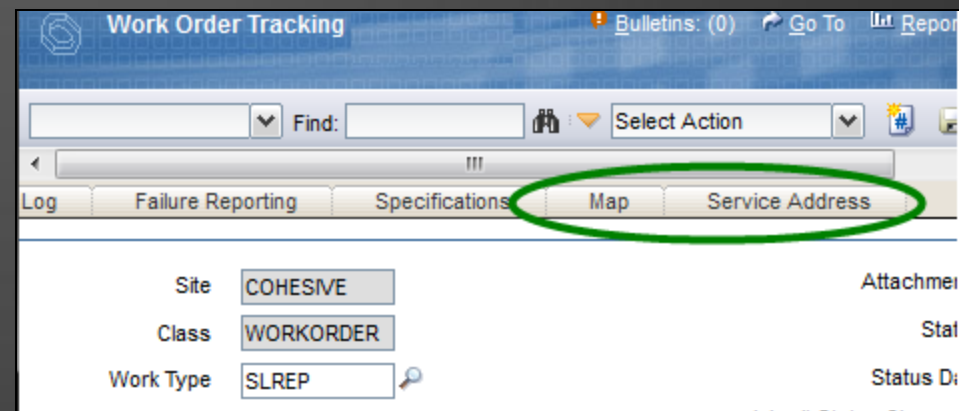
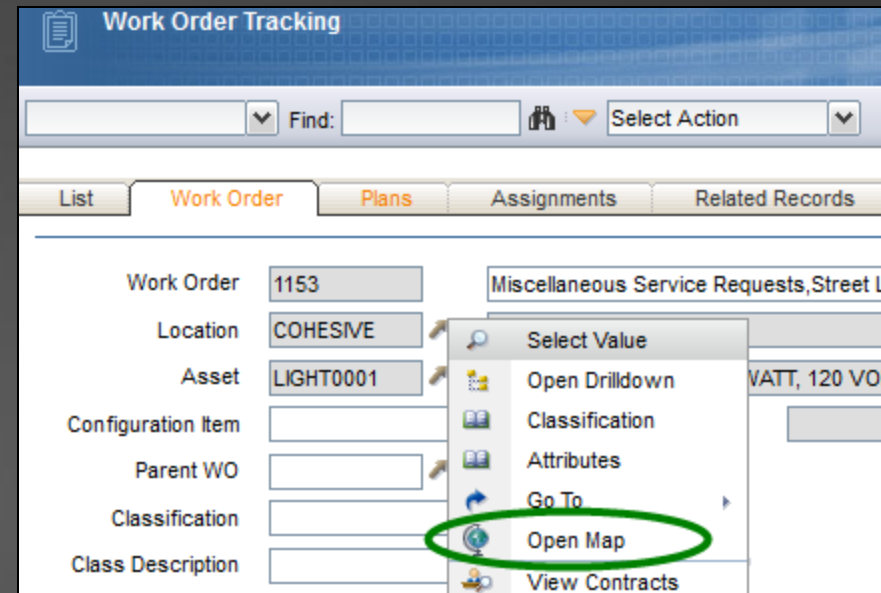
End User Overview



**Cohesive
Information
Solutions Inc.**

Where to Find Spatial in Maximo

- **Contextual Menus** allow users to select a value from a map.
- Some Apps have a **Map Tab**
 - WOTrack, SRs, Locations, and Assets OTB.
- The **Service Address** Tab is also bundled with Spatial



Asset Demo

Overview of Map Functions

Maximo Spatial

New Configuration Capabilities



**Cohesive
Information
Solutions Inc.**

Spatial and the Conditional UI

- Maximo's Conditional UI allows administrators to **add fields** from GIS tables to a Maximo Screen.
- The fields can be Edited in Maximo or made Read Only.
- Field **Security** is controlled with Sig Options.

The screenshot shows the 'Application Designer' window with the 'Workspace' tab active. The application is 'GIS_ASSET' and the screen is 'Assets w GIS changes'. The configuration area includes fields for 'Condition Code', 'Meter Group', and 'Usage'. Below these is the 'GIS Details' section, which contains a field for 'Pole Insp Date'. The 'Linear Referencing Details' section is also visible.

The 'Data Source Properties' dialog box shows the following configuration:

Control ID	1303236012389
Bean Class	
Business Object	
Parent Data Source ID	
Relationship	SPATIAL_POLE
Order By	

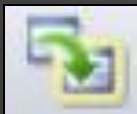
The 'Add/Modify Signature Options' dialog box shows a table of options:

Option	Description
	POLE
▶ PLUSL-1004	GIS Layer /1004/63/SDE.Pole
▶ PLUSL-GISAL	Spatial GIS Object POLE

Advanced Signature Options

Spatial and Searches

- The Maximo List Tab and Advanced Search can be modified to allow search parameters from GIS tables.
- Advanced search comes with a field called “Is GIS” to filter records that are Spatial from core Maximo records.
- The Spatial Toolbar has a **Query By Attribute** function to select GIS features based on attribute values.
- The Spatial Toolbar lets you transfer search **results** To and From the **List Tab**.



Update GIS List



System Logs and Crons

- Spatial has a system log called **PLUSGIS** that can be enabled.
- Spatial provides a Cron task, **PlusSCreateFeatureLinkCronTask**, to create Maximo Asset Records when a new GIS feature is created.
 - The Cron also automatically links the Maximo record to the GIS record.

Scenario...

- Using Maximo Spatial to process a Service Request and convert to a Work Order

Where can we go?



**Cohesive
Information
Solutions Inc.**

Other Scenarios...

- GIS functions introduce new ways to **search** and **select** Maximo data
 - All poles on a feeder (Buffer)
- **Work planning** based on what's closest.
- GIS shows trends and relationships based on **geography**.
- Integration unifies an entity's "**New Asset**" process. No data duplication.
- Analyze **Failure Codes** by region.
- Enhanced Disaster Preparedness / Planning / Response

Possibilities

- Modify Assignment Manager to **Filter Labor by Proximity to Work**. (Spatial query, but no map)
- Allow view to Asset Meters on maps. Click on an asset and see if meters are in proper range. If not create WO.
- Geographic based KPIs.
- Use GIS to create **Maximo Routes**.
- Add Network Trace functions to Maximo.
- .

Cohesive Offering



**Cohesive
Information
Solutions Inc.**

Cohesive Bundled Offerings

- **Offering #1 – Spatial Assessment & Sandbox**

Deliverables:

- Maximo Spatial Readiness Report
- Basic Spatial Roadmap
- Maximo Spatial Training
- Out of the Box Maximo Spatial sandbox environment
- 1 Maximo Server license & 5 Maximo Spatial user licenses

- **Offering #2 – Spatial Enablement & Limited Deployment**

Deliverables:

- Maximo Spatial Readiness Report
- Enhanced Spatial Roadmap
- Maximo Spatial Training
- Fully functioning environment with Maximo Spatial using your GIS data
- Sample screens tailored to your business processes
- 1 Maximo Server license & 5 Maximo Spatial user licenses

For More Info Contact:

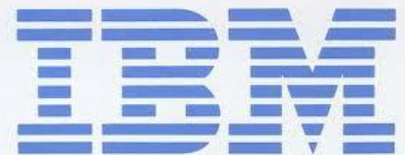
Matt Logsdon Phone: 770-378-5402
mlogsdon@cohesivesolutions.com

Or

Your IBM Maximo Representative



**Cohesive
Information
Solutions Inc.**



Thank You!

34.039698, -84.566081



**Cohesive
Information
Solutions Inc.**

The IBM logo, consisting of the letters 'IBM' in a blue, horizontally-striped font, is displayed on a white background in the bottom right corner.