

BI xPress | Product Overview



**Pragmatic
Works** 



Develop
and manage
SSIS packages
with ease!



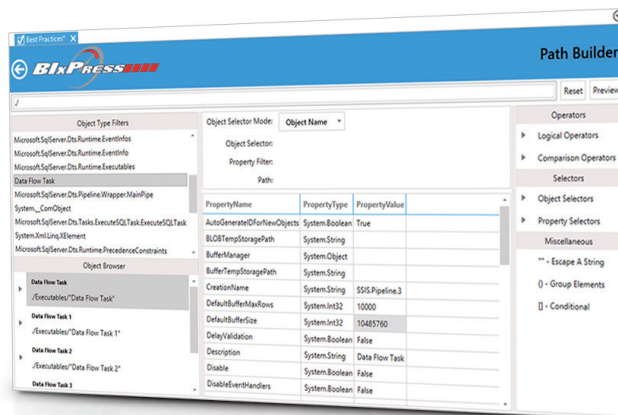
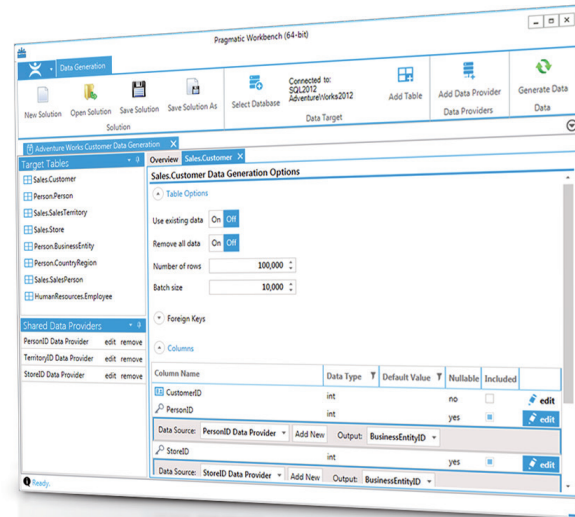
Key Features

- Create a robust auditing and notification framework for SSIS
- Speed BI development with SSAS calculations and SSIS package builder templates
- Standardize SSIS package development and code sharing for your team
- Create secure configurations and deploy SSIS environment in few clicks
- **Hundreds of other features!**

NEW

Data Generation

The data generation feature in BI xPress will give users the ability to generate random data into a table or group of tables, and populate tables using existing sources of data.

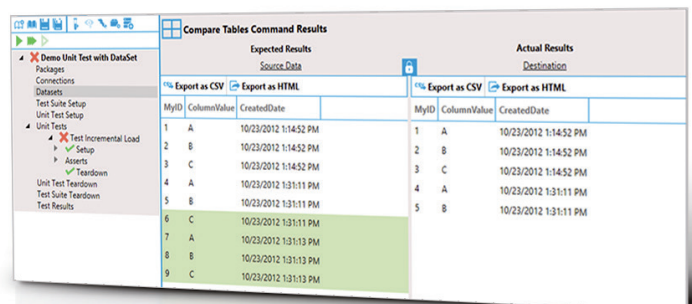


User Defined Best Practices

BI xPress now has the ability to accept user defined best practices. This can be used to ensure developers are adhering to not only common best practices, but also to specific rules defined only for specific groups.

BI Data Testing

Data Testing allows developers to compare the contents of their data match known values at any step in the unit testing flow. Data Testing is integrated into Pragmatic Workbench's Unit Testing Framework and can easily be set up with a data connection and a data query.

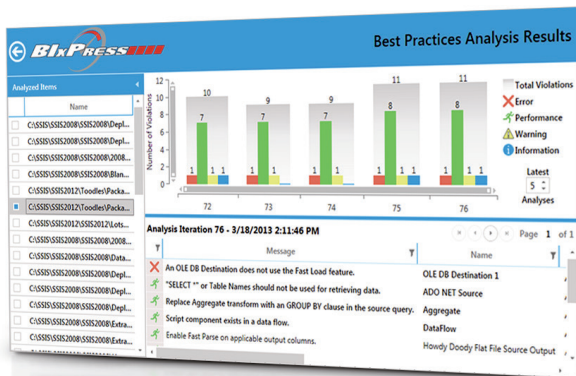


SSIS Unit Testing

Unit testing allows developers, users, and package lifecycle administrators to ensure that a package is performing exactly what the developer implemented and handling unexpected circumstances with predefined behavior. Unit testing allows specified inputs to be used as “source” data and evaluates the task output with expected task output thereby ensuring the package behaves correctly.



| Status | Name | Result | Timestamp |
|--------|------------------------|---|--------------------|
| ✓ | Test Incremental Load | Setup succeeded. | 6/17/2013 11:17 AM |
| ✓ | Test Incremental Load | Task Completed: Actual result (Success) was equal to the expected result (Success). | 6/17/2013 11:17 AM |
| ✗ | Check Rows | The actual result (9) did not match the expected result (11). | 6/17/2013 11:17 AM |
| ✓ | Average Length of Rows | The actual result (0) matched the expected result (0). | 6/17/2013 11:17 AM |
| ✓ | Test Incremental Load | All asserts were completed. | 6/17/2013 11:17 AM |
| ✓ | Test Incremental Load | Teardown succeeded. | 6/17/2013 11:17 AM |



BI xPress Best Practices Analyzer

The initial phase implementation of the Best Practices analyzer allows users to investigate SSIS packages for adherence to best practices as defined by Pragmatic Works. These best practices analyzer can investigate packages for violations of various severities such as “Warning”, “Error”, “Performance”, and “Informational”. The best practices analyzer can be started via a command line, within Pragmatic Workbench, or SSDT 2012 for SSIS 2012 packages.

SSIS 2012 Catalog Import

The new BI xPress SSIS 2012 Catalog Import feature allows organizations import native SSIS 2012 Catalog logging data into the BI xPress repository. Users can then view their packages within BI xPress’ SSIS Monitoring Console just as if they had instrumented their packages with BI xPress’ Auditing Framework. Quite simply, users no longer have to invasively alter their SSIS packages just to view them like they would within SQL Server Data Tools (SSDT). Also, users can schedule the new SSIS 2012 Catalog Import feature to import data at regular intervals so they can “set-it-and-forget-it” and watch packages appear in the SSIS Monitoring Console.”



Pragmatic Workbench

SSIS Monitoring Console

Package Executions

| Name | Start Time | Runtime |
|------------------------|---------------------|-----------|
| Success | 1/4/2013 1:39:45 PM | 0.4 sec |
| Failure and Completion | 1/4/2013 1:39:45 PM | 0.5 sec |
| Success | 1/4/2013 1:39:45 PM | 0.5 sec |
| Failure and Completion | 1/4/2013 1:39:45 PM | 0.5 sec |
| DoBunchOS | 1/3/2013 5:45:50 PM | 26.5 secs |
| DoBunchOS | 1/3/2013 5:45:50 PM | 28.7 secs |
| DoBunchOS | 1/3/2013 5:45:48 PM | 28.7 secs |
| Lots Of Stuff | 1/3/2013 3:23:53 PM | 41.1 secs |

Errors and Warnings

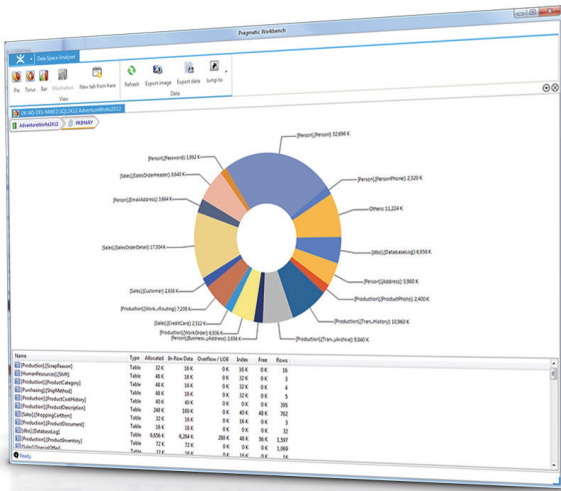
| Source Name | Message | Date |
|----------------|------------|---------------------|
| Data Flow Task | The output | 1/3/2013 3:23:53 PM |
| Data Flow Task | The output | 1/3/2013 3:23:53 PM |
| Data Flow Task | The output | 1/3/2013 3:23:53 PM |

Parameters and Variables

| Name | Value |
|-------------------|-------|
| User:Counter/var | 5 |
| User:Counter/var2 | 0 |
| User:Counter/var3 | 0 |

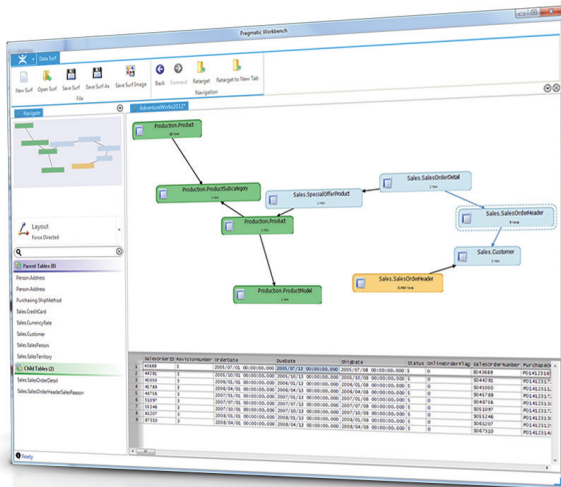
Connections

| Name | Data Source | Connection |
|-------------|------------------|---------------|
| Adventure W | FL-WS-DEV-J-N215 | Data Source F |
| Bye Bye Job | Bye Bye Job | C/Temp/Clean |
| FL-WS-DEV-J | FL-WS-DEV-J-N215 | Data Source F |



Pragmatic Workbench

The Pragmatic Workbench is an application that contains all the features of BI xPress and DBA xpress. It provides easy access to these features outside of the BIDS environment.



Schema Surf

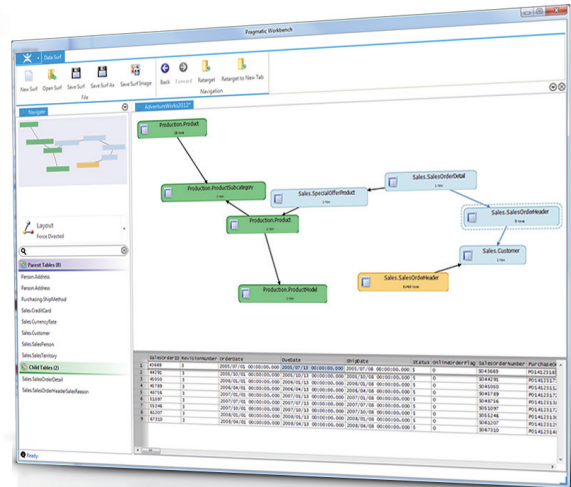
A live view of SQL Server object dependencies.

Allows database architects, system admins, and application developers discover the way tables and other objects were created. Generate an entity view of tables, views, etc.

Data Space Analyzer

A tool for making capacity judgments in SQL Server.

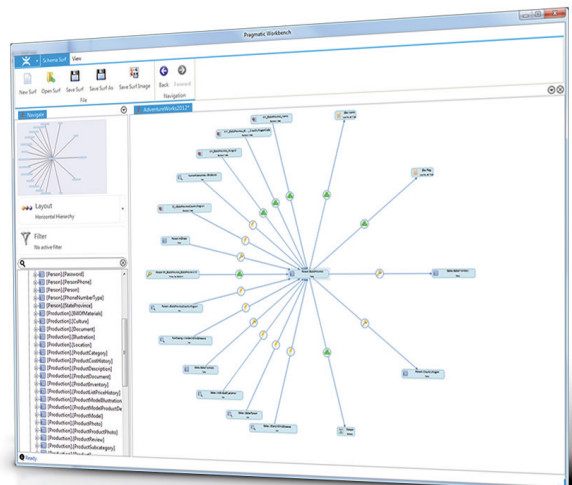
Helps database admins address disk space and manage SQL Server Instances



Data Surf

A graphically rich database schema visualization tool.

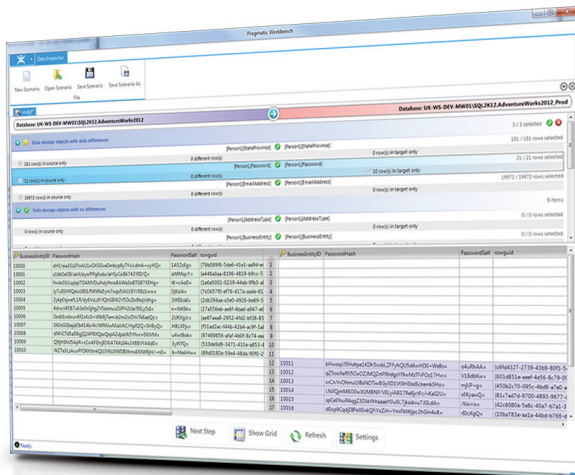
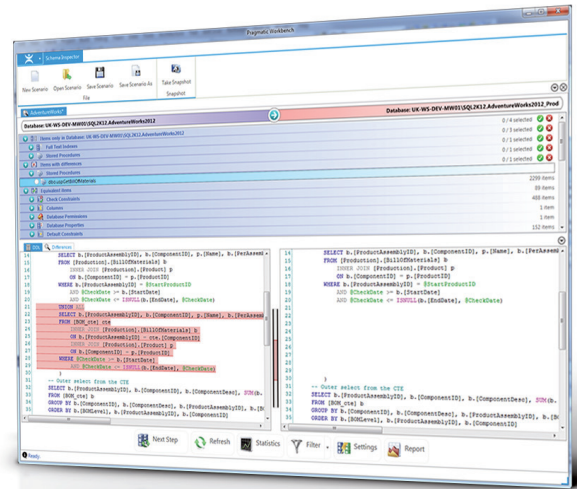
Allows database architects, system admins, and application developers discover the data within a database. Easily dive into table definitions, foreign key properties, generate SQL statements, and much more.



Schema Inspector

A SQL Server synchronization tool that can generate SQL Scripts to alter tables, views, foreign keys, etc. to match an existing database.

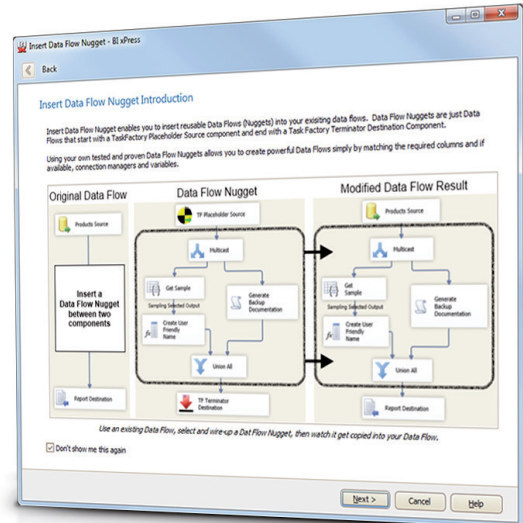
Allows database admins and application developers to keep databases “in sync”. For instance, keep the production database up to date with the latest development or staging database.



Data Inspector

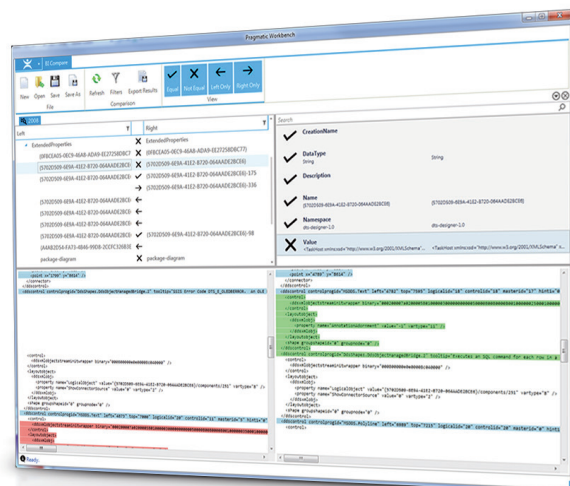
A SQL Server data synchronization tool that allows users to compare the data within the database.

Allows auditing of backups and creation of scripts to synchronize database content.



Insert Data Flow Nugget

Easily insert tested, reusable, and customizable Data Flow “Flowlets” into existing data flows. Users can insert “write once” functionality into existing data flows by simply mapping inputs, outputs, connections, and variables.

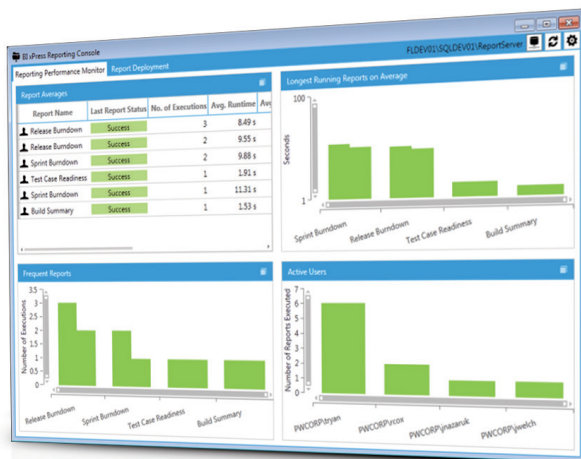


BI Compare

A tool for performing meaningful comparisons between 2 BI objects. The first release supports comparing SSIS packages.

SQL Server Integration Services 2012 Support

Users can now manipulate packages using many of BI xPress' features from within SQL Server Data Tools 2012 or using the stand-alone BI xPress application. The Auditing Framework, Notification Framework, Package Builder, Snippet Wizard, and the Monitoring Console have all been updated and tweaked for SQL Server 2012 and performance gains.

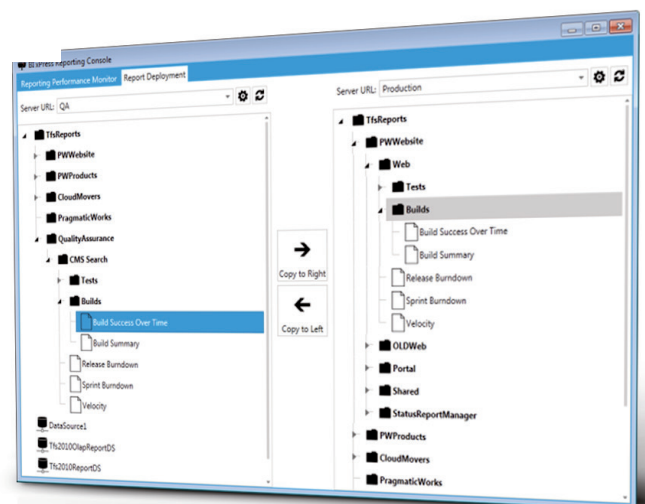


SQL Server Reporting Services Performance Monitor (SSRS Reporting Performance Monitor)

Included with BI xPress 3.5.0. Users can now quickly view stats for their SQL Server Reporting Services (SSRS) 2008 and later to see what reports are taking the longest to run, who is running the most reports, and also see the memory and data usage for each report.

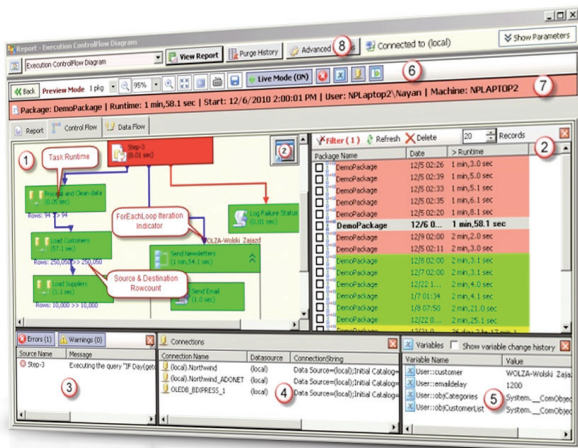
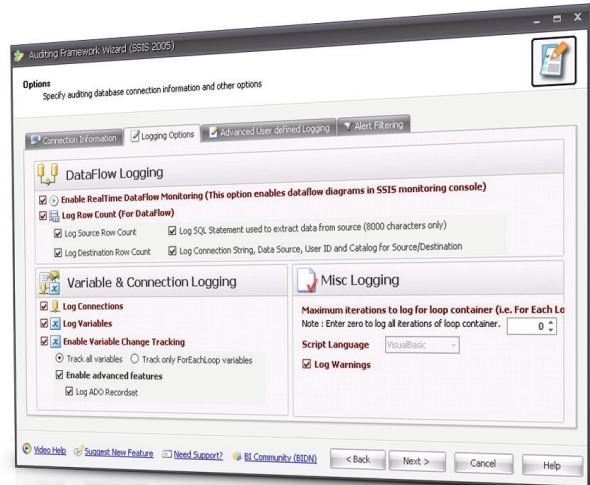
SQL Server Reporting Services Report Deployment Tool (SSRS Report Deployment Tool)

Provides a way for users to move reports from one Reporting Services instance to another within their domain allowing easy-as-pie deployment of reports from a QA server to a production server simply by dragging-and-dropping reports.



Robust and Easy SSIS Logging & Auditing Framework

Quickly employ an auditing framework of best practice SSIS patterns to detect failures and performance problems in your SSIS packages. With it's reports, you'll surely pass any Sarbanes-Oxley audit.

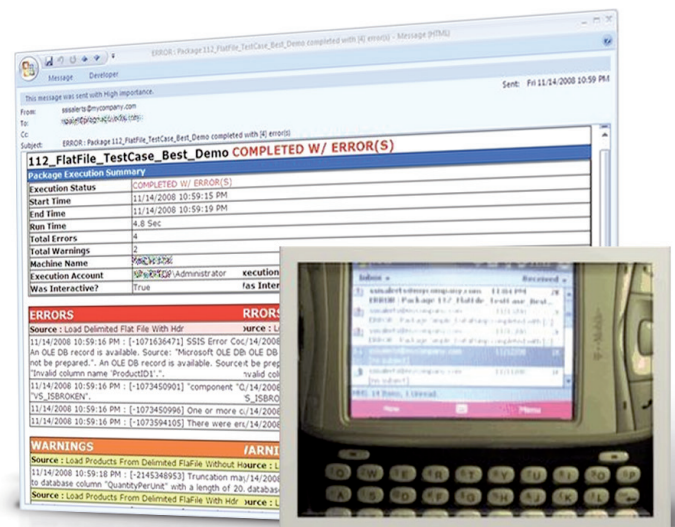


Amazing Operational Reports

Easily breakdown your business intelligence environment's performance problems and diagnose outages visually. Find where you have capacity issues coming before they cause a system issue.

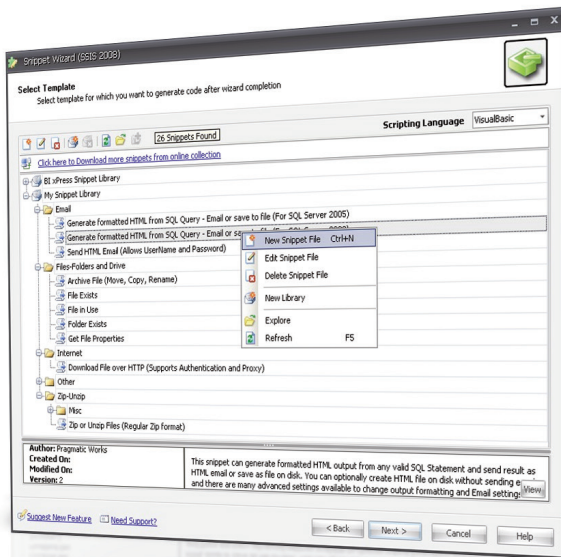
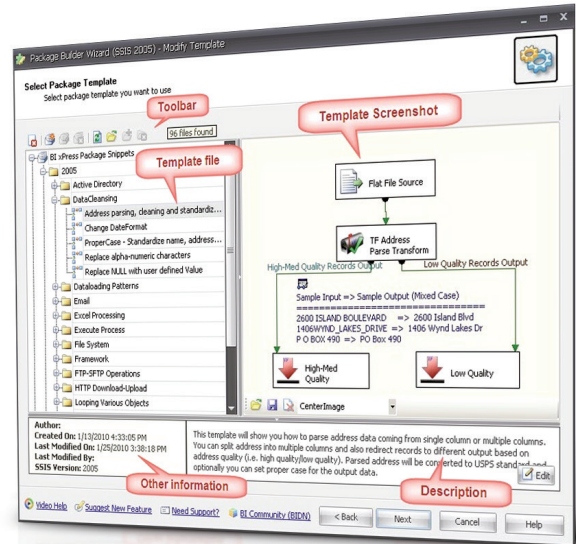
Quickly Catch Errors with the SSIS Notification Framework

The notification framework will notify you through easy to read emails or SMS text messages when a package completes or fails. Translate complex error messages into an easy to read email to help you diagnose your problem faster. You can setup HTML Email or Plain Text email and many advanced settings.



Develop Faster with the SSIS Template and Package Builder

Create SSIS packages in seconds with the Package Builder. Share patterns of code with other developers or use our pre-built templates to help you learn SSIS faster.

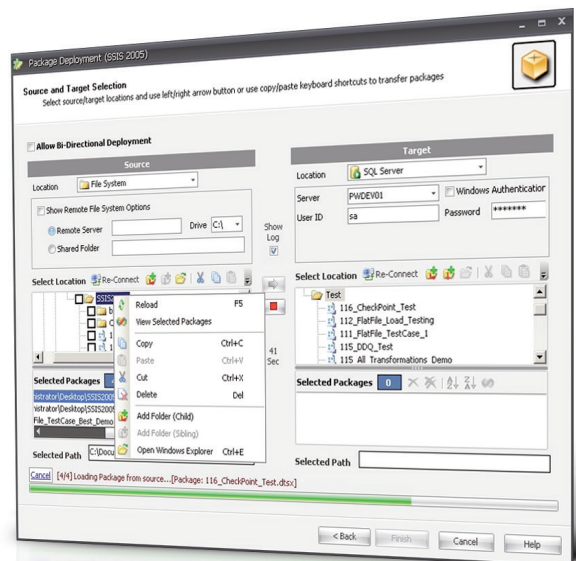


Create SSIS Scripts in Seconds with Snippets

Do you find IS Script Snippet feature in BI xPress will allow you to create SSIS Script Task code from our extensive library of scripts with two clicks. If you want more, you can create and share more of the scripts.

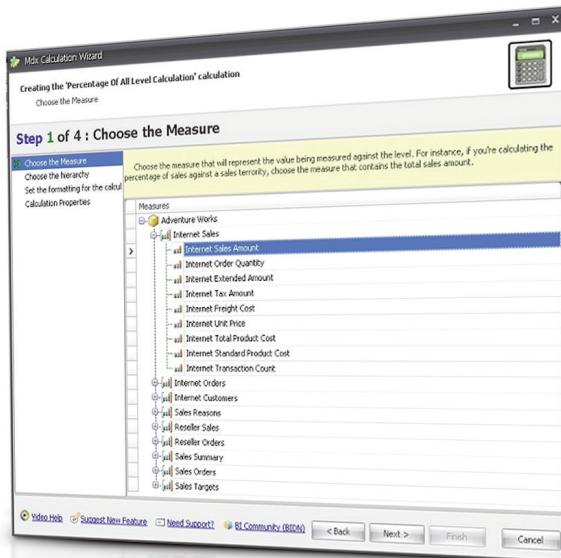
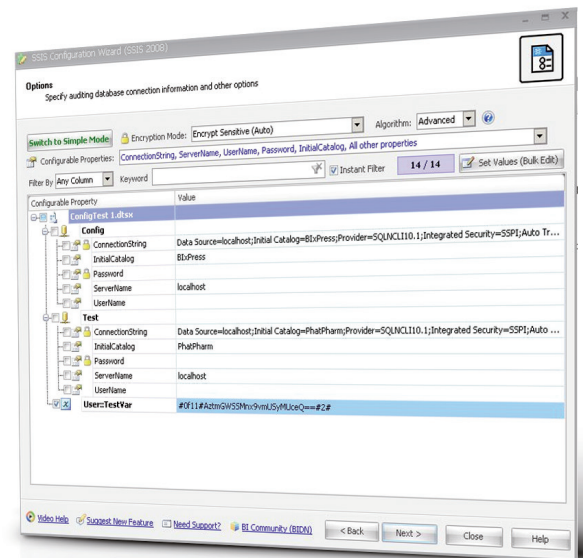
Deploy SSIS Packages at the Speed of Click

Deploy hundreds of SSIS packages and their config files in seconds with BI xPress. You can also change the location of the configuration file easily and change the protection of any package. With the new Quick Deploy feature, you can save your favorite servers to deploy even faster to.



Advanced SSIS Configuration (Encryption, Bulk Edit and Smart-Rename)

Secure your most valuable SSIS assets and seamlessly migrate packages from development to production. The Advanced SSIS configuration manager allows you to encrypt private information like connection strings and variables. Rename connection in hundreds of packages to match your company standard or create new configurations for many packages in few clicks.

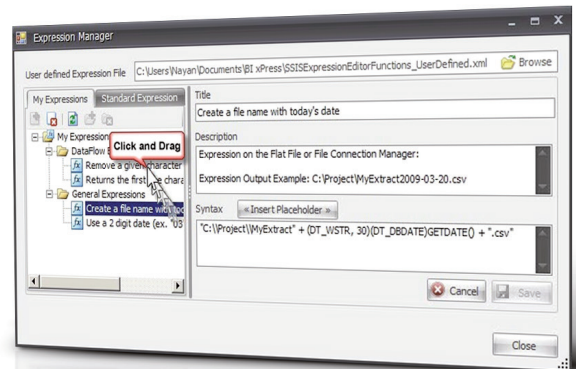


MDX is a Breeze with Calculation Builder

Hate writing MDX? BI xPress can create MDX calculations in seconds with the Calculation Builder. Color code your measures and shave days off your project.

Dozens of Other Features

There are dozens of other features in BI xPress to help you code and manage Microsoft BI faster and easier. BI xPress will show you easily where your package is made dynamic and help you write expressions. It will also help you move variables to new packages.



FEATURES

NEW SQL SERVER INTEGRATION SERVICES 2012 SUPPORT USERS CAN NOW MANIPULATE

Users can now manipulate packages using many of BI xPress' features from within SQL Server Data Tools 2012 or using the stand-alone BI xPress application. The Auditing Framework, Notification Framework, Package Builder, Snippet Wizard, and the Monitoring Console have all been updated and tweaked for SQL Server 2012 and performance gains.

NEW SQL SERVER REPORTING SERVICES 2012 PERFORMANCE MONITOR (SSRS REPORTING PERFORMANCE MONITOR)

Included with BI xPress 3.5.0. Users can now quickly view stats for their SQL Server Reporting Services (SSRS) 2008 and later to see what reports are taking the longest to run, who is running the most reports, and also see the memory and data usage for each report.

NEW SQL SERVER REPORTING SERVICES REPORT DEPLOYMENT TOOL (SSRS REPORT DEPLOYMENT TOOL)

Provides a way for users to move reports from one Reporting Services instance to another within their domain allowing easy-as-pie deployment of reports from a QA server to a production server simply by dragging-and-dropping reports.

SSAS MDX CALCULATION BUILDER

This feature allows you create complex MDX Calculations in few clicks from several available MDX templates. This option is available when you are in SSAS Cube Designer and Calculations tab is active.

SSIS AUDITING FRAMEWORK WIZARD

The Add/Update and Remove Auditing Framework command will open the Auditing Framework Wizard. The Auditing Framework Wizard will allow you to add, remove, or edit the auditing framework for each of the packages in the solution your are currently working in. You can specify Auditing Database Connection Information, generate Configuration Files for the packages, and specify logging options.

SSIS MONITORING CONSOLE

The SSIS Monitoring Console allows you to monitor current or past SSIS executions. You can use control flow diagrams to see package execution visually just like BIDS while you debug packages. You can also view pre defined reports that will display extraction and load details/trends, recent executions, any packages that may be currently running, package execution trends, execution dashboards, and execution alerts. The data in the reports can be filtered in a variety of way including by date, package, machine, execution account, and execution mode.

SSIS NOTIFICATION FRAMEWORK WIZARD

The Add/Update and Remove Notification Framework command will open the Notification Framework Wizard. The Notification Framework Wizard will allow you to create notification event handlers on events such as OnError, OnWarning, OnSuccess, and OnComplete for any of the packages in the current solution. You can also choose to be notified on your mobile device by specifying a phone number and service provider.

SSIS SNIPPETS WIZARD

The Add Snippet command will open the Snippet Wizard. The Snippet Wizard will allow you to add script code (VB.net/C#) from reusable code library.

SSIS PACKAGE DEPLOYMENT WIZARD

The Deploy SSIS Package command will launch the Package Deployment wizard. The Package Deployment Wizard will allow you to quickly and easily deploy any of the packages in the current solution.

SSIS QUICK PACKAGE DEPLOYMENT WIZARD (BIDS ONLY)

The Quick Deploy SSIS Package command allows you to deploy selected packages in one click using predefined target location selection. Unlike other wizards this wizard runs in a separate thread so you can work with BIDS while deployment is in progress.

SSIS EXPRESSION HIGHLIGHTER

The Expression highlighter will automatically highlights various SSIS objects with expressions or external configuration with unique icons. You can highlight on demand by clicking this icon or enable auto highlighting by selecting "Auto Highlight" option found on "Expression List" plug-in window.

SSIS PACKAGE BUILDER/ TEMPLATE WIZARD

Package builder option helps you to build packages quickly from existing templates. There are 6 different options on the package builder wizard screen. You can create/modify templates or packages using this option.

SSIS SECURE CONFIGURATIONS MANAGER

Using this option you can create secure configurations and add/edit configuration values easily in few clicks for one or multiple packages. You can also generate multiple shared configurations for selected connections and adjust naming convention using smart rename feature.

EXPRESSION LIST AND EXPRESSION EDITOR

The Expression List plugin lists all objects with expressions along with object name, property name and expression. You can edit each expression with by clicking edit link. BI xPress has custom expression editor which has all features from standard expression editor and reusable expression snippet library (more than 25 snippets provided).

VARIABLE EDIT

Variable Edit Plugin opens Value Expression. If variable is set to EvaluateAsExpression then BI xPress expression editor is displayed. With value editor you can easily edit multiple line text which is not easily possible with standard BIDS functionality.

VARIABLE COPY/MOVE TO NEW SCOPE

Variable copy/move feature allows to copy variables from one scope to another within the same or other packages with single click.

EXPRESSION MANAGER

Using this option you can add/edit user defined expressions. User defined expressions are listed under "Snippets->My Expressions" node in the expression editor.

SORT PACKAGES

With this option you can sort packages listed under "SSIS Packages" node in solution explorer. You can sort packages by name, size and date modified.

COMPILE SCRIPT TASKS/ COMPONENTS

This command generates compiled code for all script tasks and script components (inside DataFlow) for single or all packages of your SSIS Project.

CONFIG EDIT

Using this option you can easily edit XML or SQL Configurations.

A photograph of three business professionals in a meeting. A man in a white shirt and dark trousers is pointing at a laptop screen. A woman in a blue sleeveless top and jeans is looking at the screen. Another man in a light blue shirt is leaning over, also looking at the laptop. They are in a bright, modern office setting with large windows in the background.

***Audit, Notify,
Deploy and
Manage
SSIS Packages***

***Pragmatic
Works*** 

400 College Dr., Suite 216
Middleburg, FL 32068
(904) 638-5743
support@pragmaticworks.com
sales@pragmaticworks.com
www.pragmaticworks.com