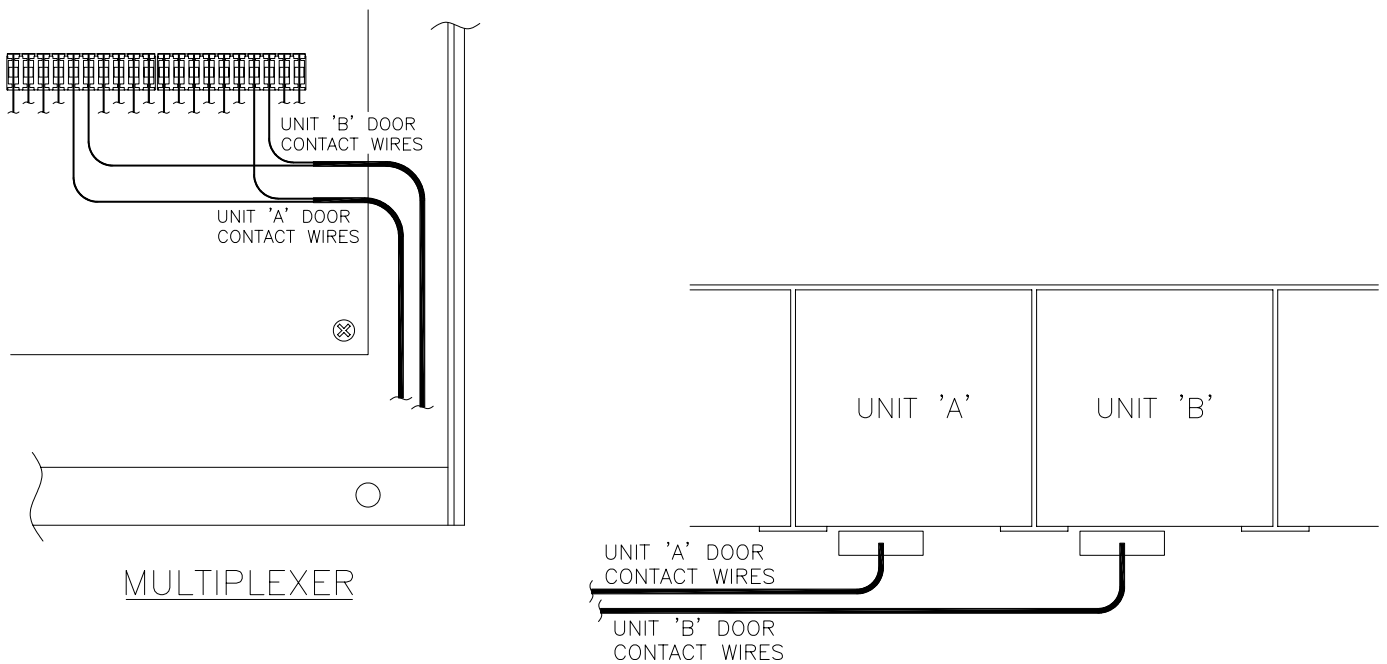




Combining Alarmed Units

Often, Self Storage sites combine multiple smaller units together into one larger unit. Use the steps below to combine two alarm switches so that it only reports as one unit on the event log, no matter which door that is opened to access the unit. If you have questions or need assistance, please contact your local PTI Office Technical Support.

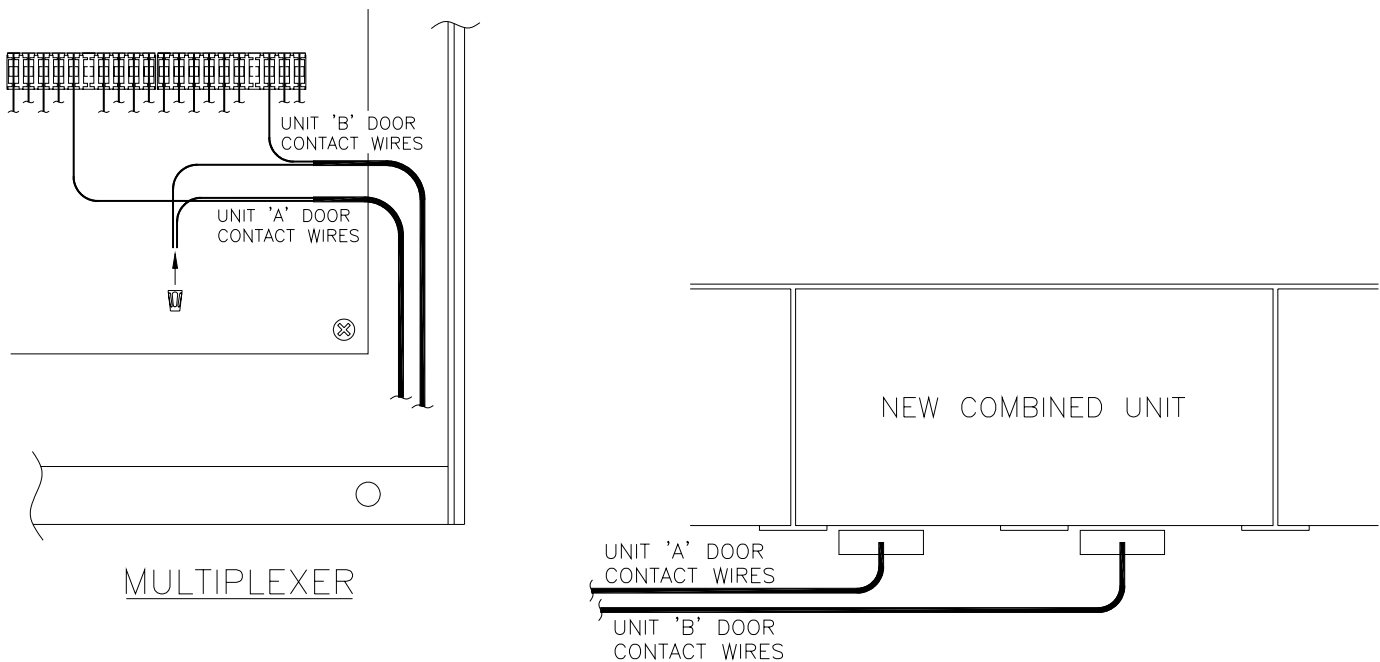
1. The Example below shows the door alarm contact switches coming from two separate units ('A' and 'B') into a PTI remote multiplexer. Each door alarm contact switch has two wires, one going to a separate multiplexer door channel, and the other going to a multiplexer grounded channel.





Combining Alarmed Units (Page 2)

- The Example below shows how to combine the door alarms when Unit 'A' and Unit 'B' are combined into one unit. The door alarm channel for Unit 'A' remains punched down in the same door alarm channel on the multiplexer. The ground wire for Unit 'A' and the door alarm channel wire for Unit 'B' are removed from the board and spliced together using a 3M UY2 connector or wire nut. The ground wire for Unit 'B' remains punched down to the ground channel on the multiplexer board.
- Finally, go into the alarm.alm file in the computer and remove Unit 'B'. This can also be done in the Protected Site Setup of Falcon 2000. For more information on this, refer to the Falcon Installers Manual or the Falcon 2000 manual. By following these directions, both units are now combined into one and will be alarmed as Unit 'A'. Either door that the tenant opens will display as Unit 'A'.



We strongly recommend that installation and setup of any PTI equipment be done by a certified, licensed, qualified, and competent person. PTI Integrated Systems can recommend local dealers and installers, but it is up to the customer to verify their qualifications and negotiate any pricing or contracts unless PTI has been specifically contracted in writing to do so for the customer. These guidelines are subject to change without notice. With any setup or configuration, some troubleshooting and adjustment of the configuration may be required. This will differ with every installation depending on many outside and site-specific variables. This troubleshooting and configuration may include purchasing additional equipment. In no circumstances will PTI Integrated Systems be responsible for any damages either incidental or consequential based on these recommendations. All installation of electronics and electrical systems must be in compliance with local, municipal, state, and National Electrical Code.