

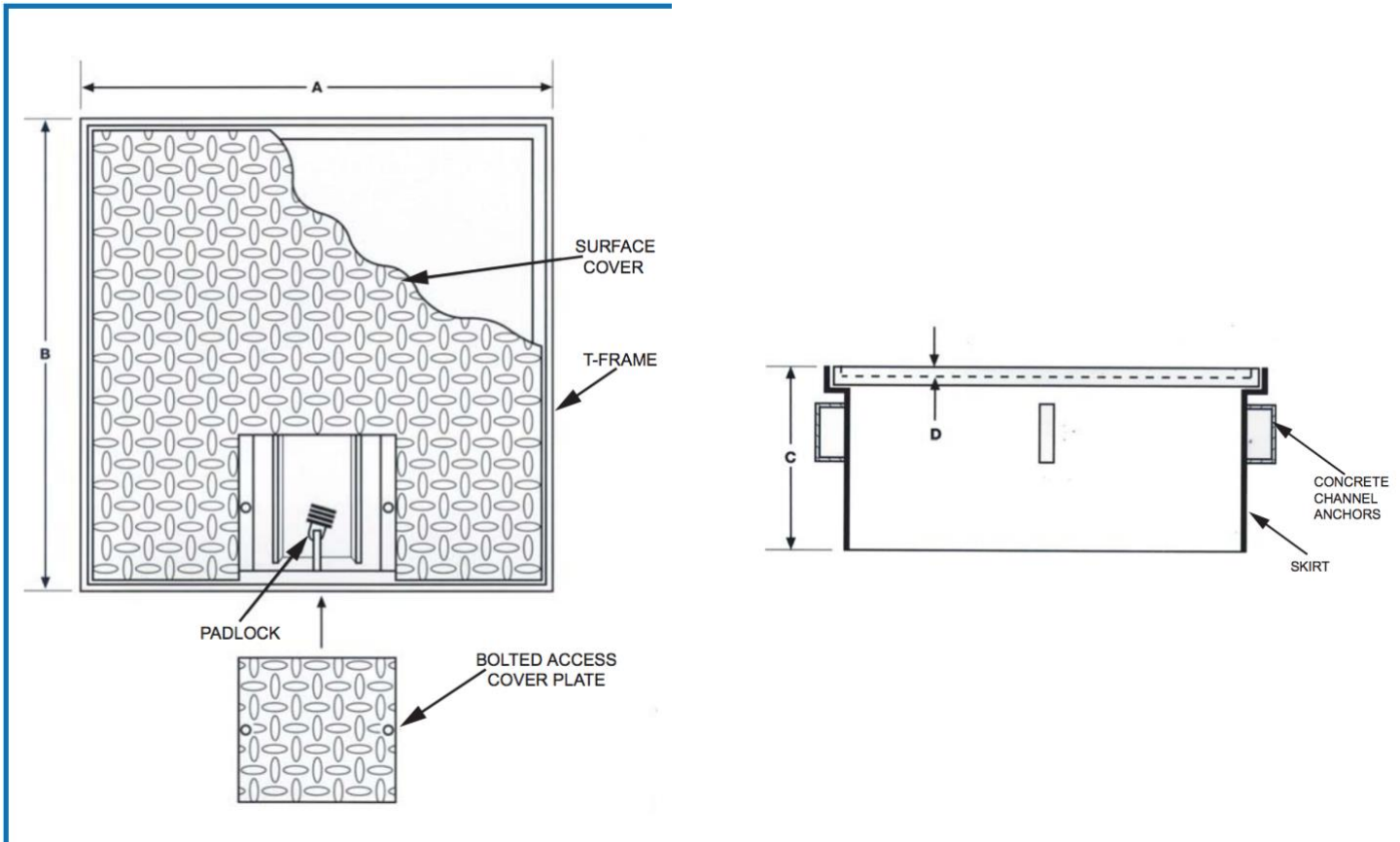


TOWN & COUNTRY PLASTICS

Customized For Precision

10B Timber Lane, Marlboro, NJ 07746 • (732) 780-5300 • FAX: (732) 294-0001 • www.tandcplastics.com

T&C Model 36SL Lockable Steel Manhole & Frame



FEATURES

- 3/8" DIAMOND PLATE SURFACE COVERS FOR H-20 TRUCK-LOAD RATING.. 30" AND LARGER MODELS ARE REINFORCED WITH 4" CHANNEL.
- RECESSED PICKING HANDLE(S) ON MANHOLES 30" AND LARGER.
- 14 GAUGE STEEL FORMED FRAMES ON 24" AND 30" UNITS.
- CHANNEL-STYLE CONCRETE ANCHORS FOR ANCHORING TO CONCRETE ON 30" AND LARGER.
- ALL STEEL IS COATED WITH PROTECTIVE PAINT.
- REMOVABLE BOLTED ACCESS COVER PLATE OVER RECESSED LOCKING DEVICE KEEPS DIRT, DEBRIS AND DIRECT WATER OUT.
- PADLOCK BY OTHERS.
- 11 GAUGE STEEL FORMED FRAMES ON 36" AND LARGER.