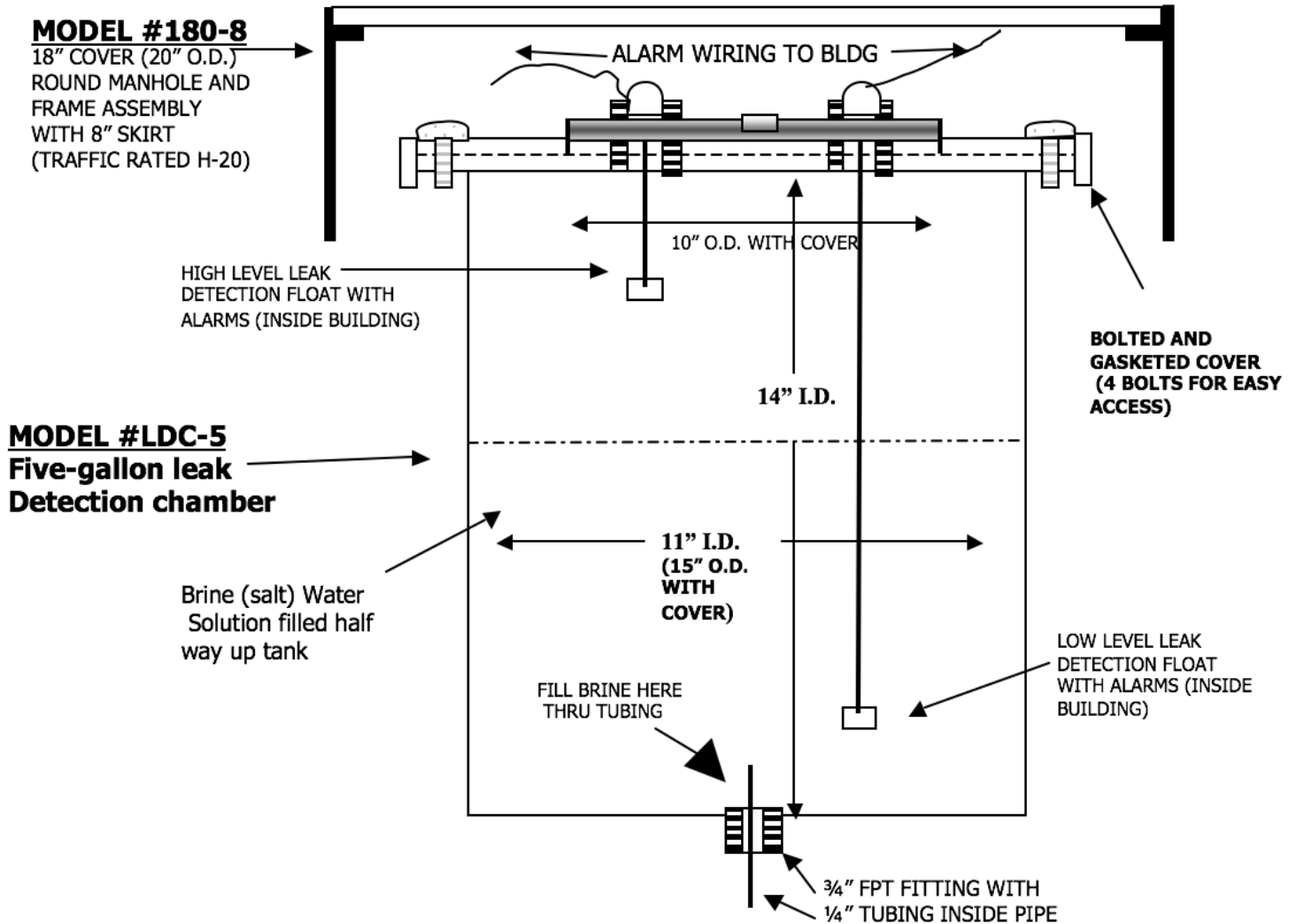




**LEAK DETECTION MONITORING CHAMBER**



**NOTE:** PLUMBING CONTRACTOR TO INSTALL 3/4" PIPING FROM 3/4" FPT ON BOTTOM OF THIS CHAMBER TO 3/4" FPT LEAK DETECTION CONNECTON ON TOP SIDEWALL OF UNDERGROUND TANK.

**NOTE:** THE TWO SETS OF ALARMS (LIGHTS & BUZZERS) WITH SWITCH BOXES ARE THE SAME AS THE ONE UNDERGROUND TANK HIGH LEVEL FLOAT AND ALARMS THAT WE ARE ALREADY PROVIDING.



# TOWN & COUNTRY PLASTICS

Customized For Precision

10B Timber Lane, Marlboro, NJ 07746 • (732) 780-5300 • FAX: (732) 294-0001 • www.tandcplastics.com

