



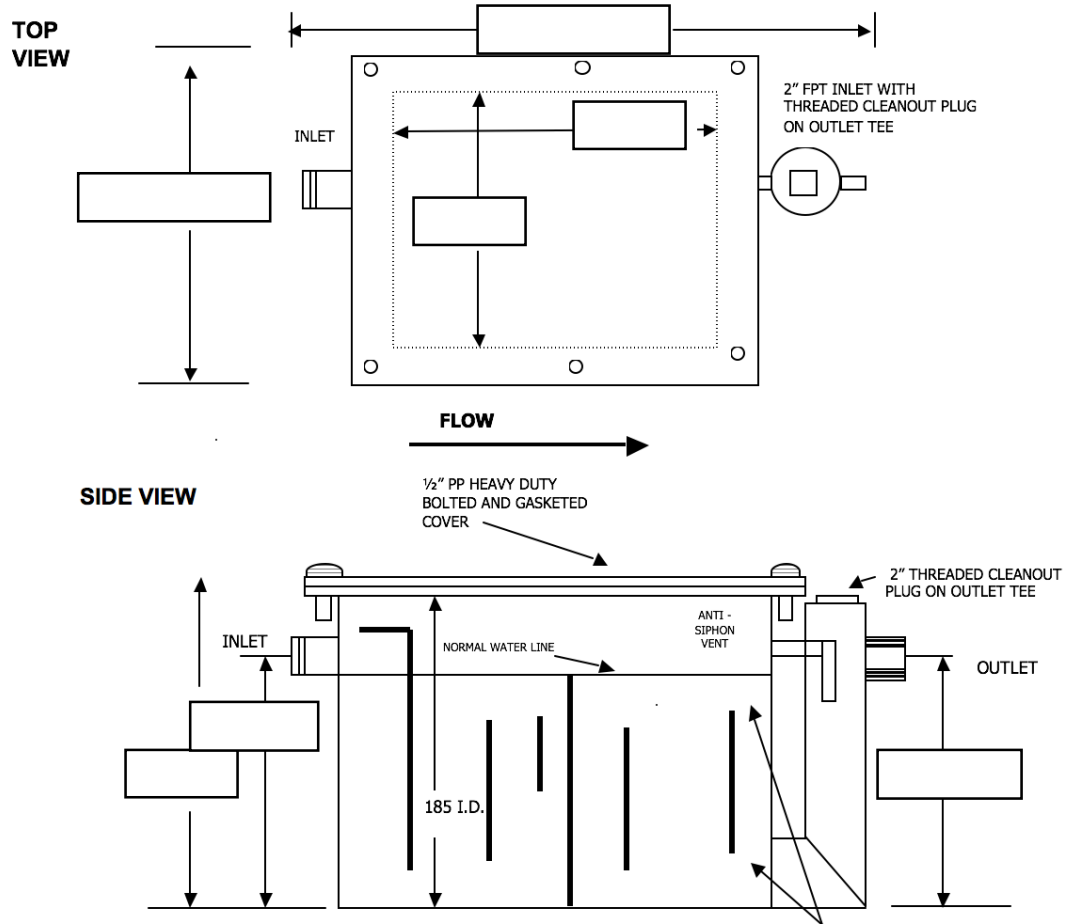
TOWN & COUNTRY PLASTICS

Customized For Precision

10B Timber Lane, Marlboro, NJ 07746 • (732) 780-5300 • FAX: (732) 294-0001 • www.tandcplastics.com

Molded Seamless Grease Interceptor Submittal Sheet

MODEL NUMBER _____



TANK HEIGHT _____

TANK DIAMETER _____

NOTE: SEPARATE 2" FLOW CONTROL TEE FURNISHED WITH RESTRICTOR PLATE.

FITTING SIZE

FITTING TYPE

FITTING CENTERLINE LOCATIONS

INLET _____

OUTLET _____
