



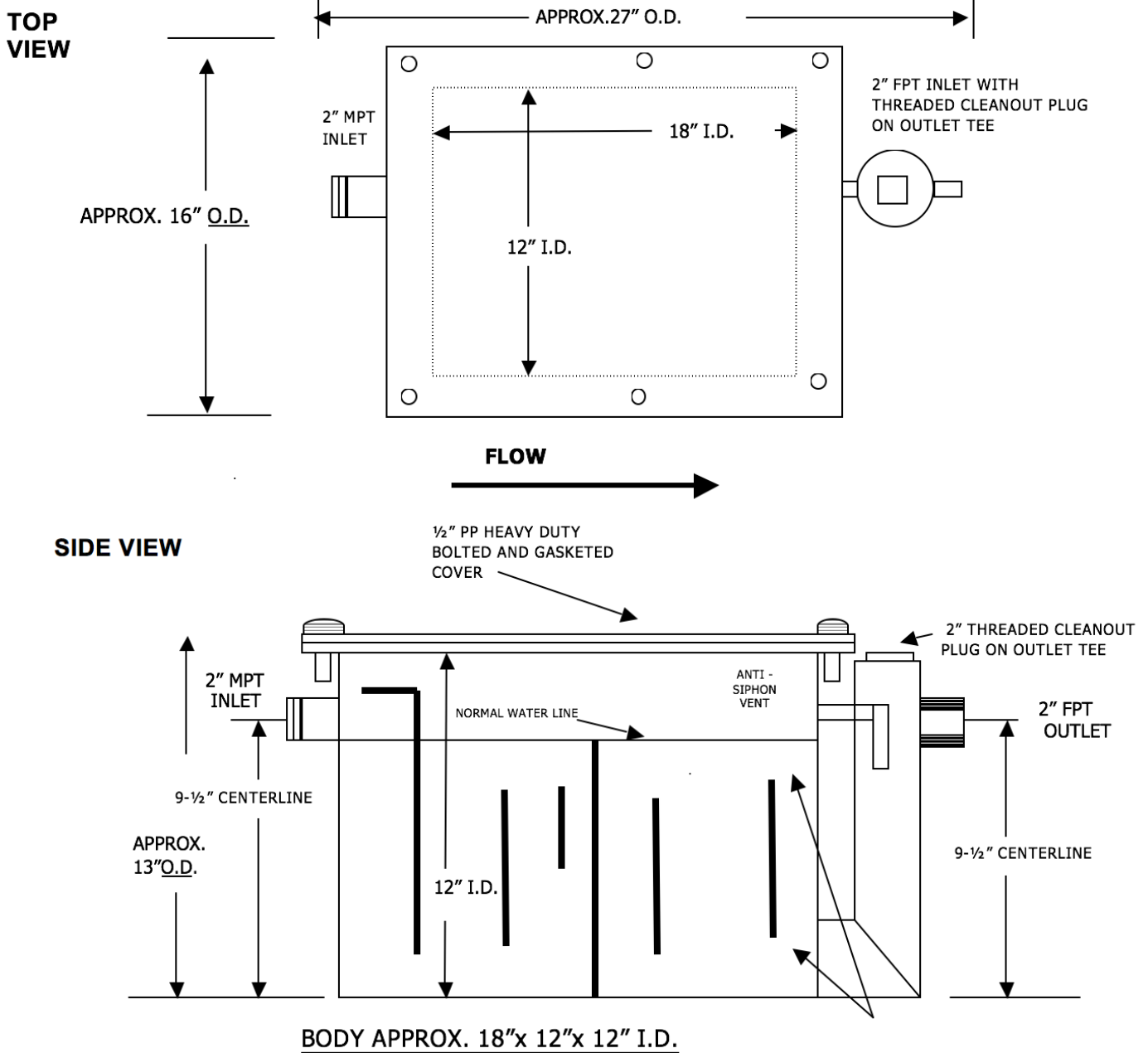
TOWN & COUNTRY PLASTICS

Customized For Precision

10B Timber Lane, Marlboro, NJ 07746 • (732) 780-5300 • FAX: (732) 294-0001 • www.tandcplastics.com

MODEL# GI-10 / HDPE

MOLDED SEAMLESS GREASE INTERCEPTOR



Model #GI-10 / HDPE- 10 GPM, 20 LB. CAPACITY

NOTE: SEPARATE 2" FLOW CONTROL TEE FURNISHED WITH RESTRICTOR PLATE