



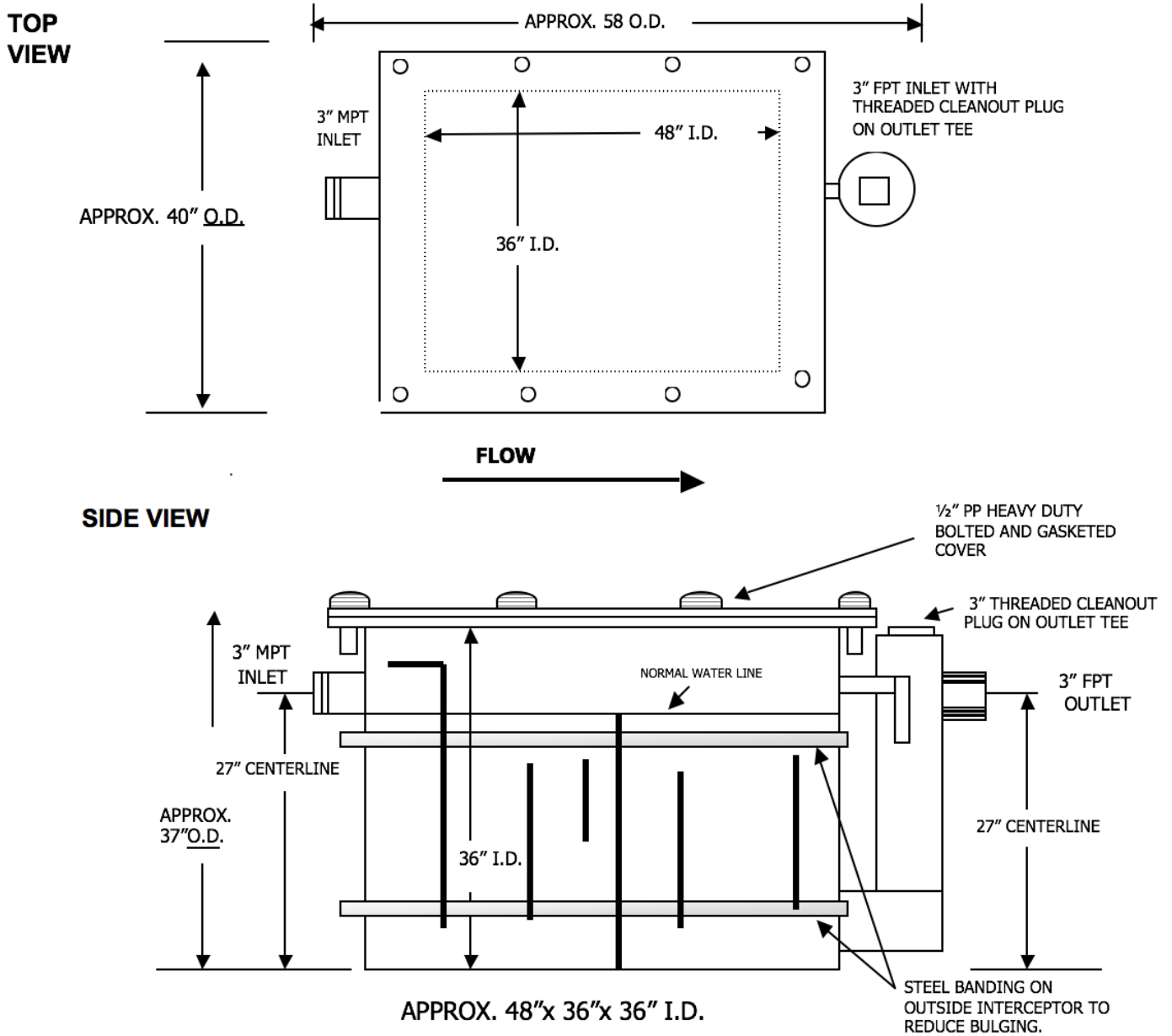
TOWN & COUNTRY PLASTICS

Customized For Precision

10B Timber Lane, Marlboro, NJ 07746 • (732) 780-5300 • FAX: (732) 294-0001 • www.tandcplastics.com

MODEL# GI-100 / HDPE

MOLDED SEAMLESS GREASE INTERCEPTOR



NOTE: SEPARATE 3" FLOW CONTROL TEE FURNISHED WITH RESTRICTOR PLATE
3" CONNECTIONS ARE STANDARD ON THIS UNIT.
(4" CONNECTIONS ARE AVAILABLE, ONLY IF NEEDED.)