



TOWN & COUNTRY PLASTICS

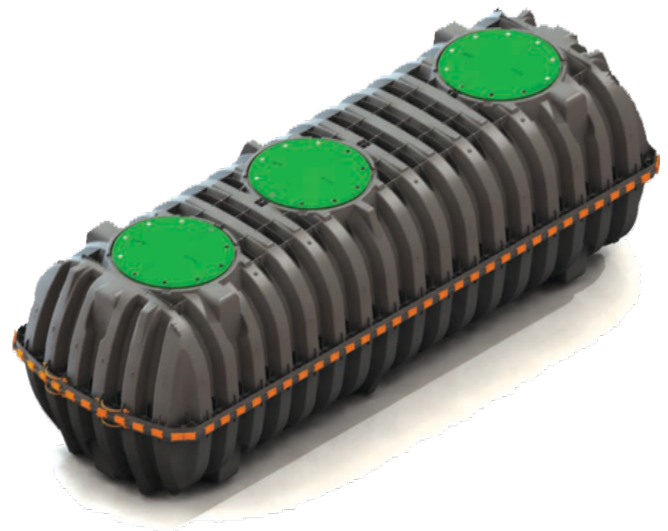
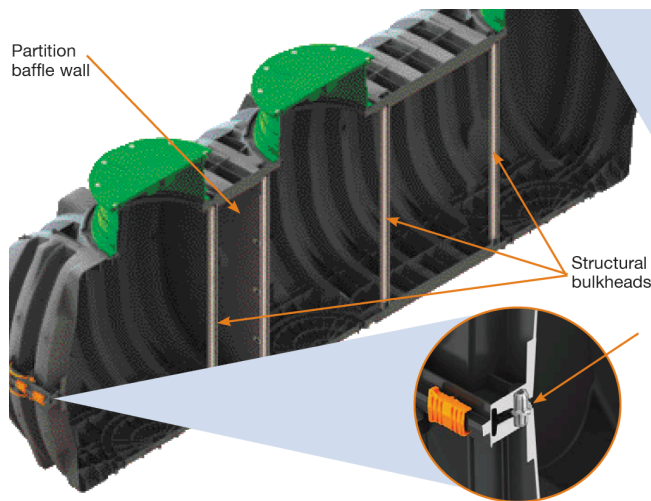
Customized For Precision

10B Timber Lane, Marlboro, NJ 07746 • (732) 780-5300 • FAX: (732) 294-0001 • www.tandcplastics.com

Below Ground Grease Oil Interceptor

Model # HGI-1500 / HDPE

This TC Model #HGI-1500 is a lightweight strong and durable below ground interceptor. This watertight tank design is offered with custom-fit risers and heavy-duty lids. T&C's injection molded tanks provide a revolutionary improvement in plastic tank design, offering long term exceptional strength and watertightness.



Features & Benefits

- Strong injection molded polypropylene (pp) construction
- Lightweight plastic construction and inboard lifting lugs allow for easy delivery and handling
- Integral heavy-duty green lids that interconnect with TW™ risers and pipe riser solutions
- Structurally reinforced access ports eliminate distortion during installation and pump-outs
- Reinforced structural ribbing and fiberglass bulkheads offer additional strength
- Can be installed with 6" to 48" of cover
- Can be pumped dry during pump-outs
- Has Internal Partition and Internal Tee Assemblies
- No special installation, backfill or water filling procedures are required

NOTE:

- Use 1, 2 or 3 access manholes
- Suitable for use as a septic tank, sump tank, or rainwater non-potable tank



TOWN & COUNTRY PLASTICS

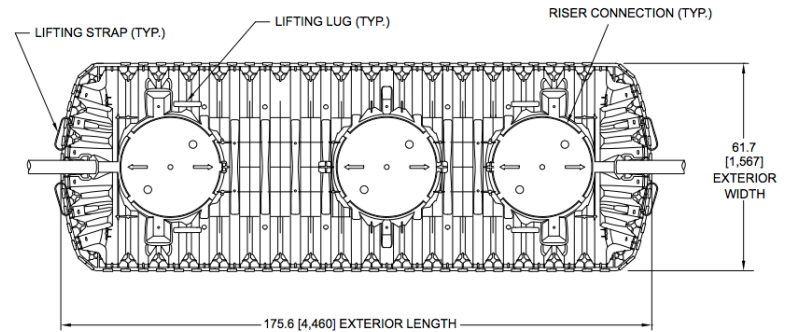
Customized For Precision

10B Timber Lane, Marlboro, NJ 07746 • (732) 780-5300 • FAX: (732) 294-0001 • www.tandcplastics.com

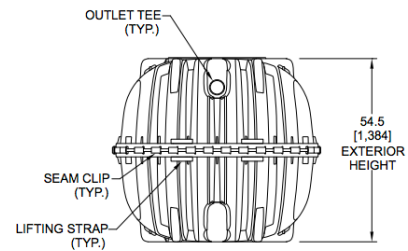
Model #HGI-1500

General Specifications and Illustrations

This grease trap is an injection molded two piece mid-seam plastic tank. The injection molded plastic design allows for mid-seal joint that has precise dimensions for accepting an engineering EPDM gasket. T&C's gasket design utilized technology from the water Industry to delivery proven means of maintaining a watertight seal. The two-piece design is permanently fastened using a series of non-corrosive please alignment dowels and locking seam clips.

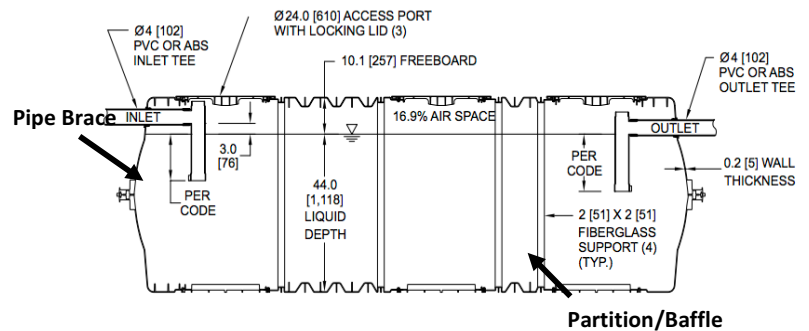


TOP VIEW

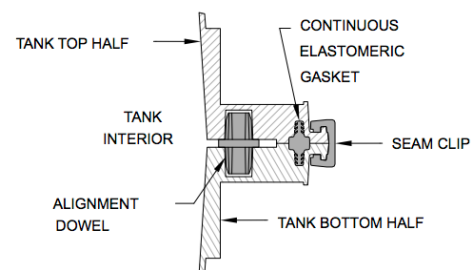


Model HGI-1500

Working Capacity	1537 gal (5818 L)
Total Capacity	1787 gal (6765 L)
Airspace	16.9%
Length	176" (4460 mm)
Width	62" (1567 mm)
Length-to-Width Ratio	2.8 to 1
Height	55" (1384 mm)
Liquid Level	44" (1118 mm)
Invert Drop	3" (76 mm)
Fiberglass Supports	4
Compartments	1 or 2
Maximum Burial Depth	48" (1219 mm)
Minimum Burial Depth	6" (152 mm)
Maximum Pipe Diameter	4" (100 mm)
Weight	501 lbs (228 kg)



SIDE VIEW



MID-HEIGHT SEAM SECTION