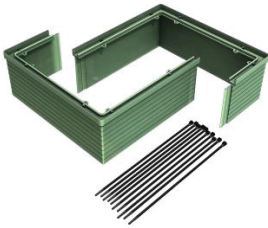


EXTENSION INSTALLATION INSTRUCTIONS



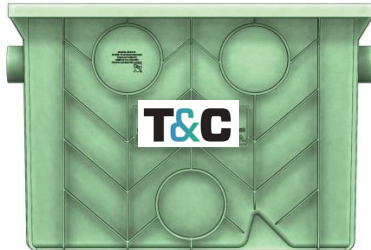
Each extension provides up to 9" of height extension. If more than 9" of extension is required, stack multiple extension assemblies.

Includes:

- (2) Extension components
- (1) Roll of gasket
- (10) Zip ties

Equipment Required

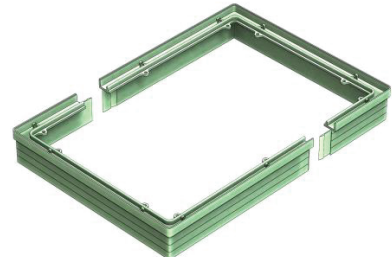
- Silicone sealant
- Saw



STEP 1 Measure the height from the top of the interceptor to the desired ground level



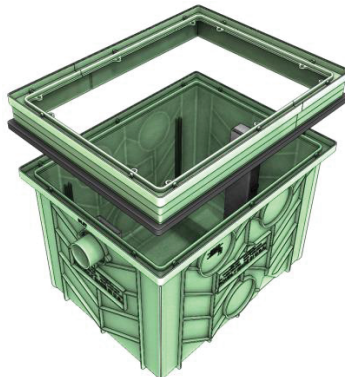
STEP 2 Cut off the bottom of each extension component to the desired height



STEP 3 Apply silicone sealant in the groove between each body component push them together



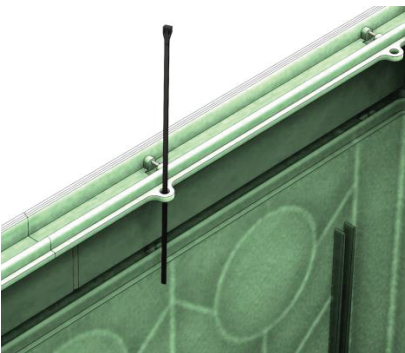
STEP 4 Apply the gasket to the bottom outer edge of the extension



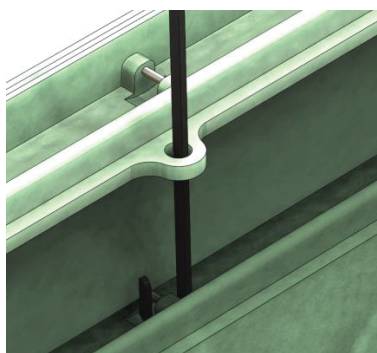
STEP 5 Remove the lid and place the extension onto the Little Max interceptor



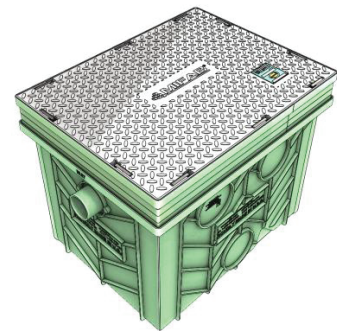
STEP 6 Check around the edges to see if the gasket is installed correctly



STEP 7 Place the zip ties through the holes in the extension. There are 10 zip ties, one for each hole.



STEP 8 Tighten the zip ties around the pins of the interceptor or through the next hole if using more than one extension



STEP 9 Place the interceptor lid onto the extension