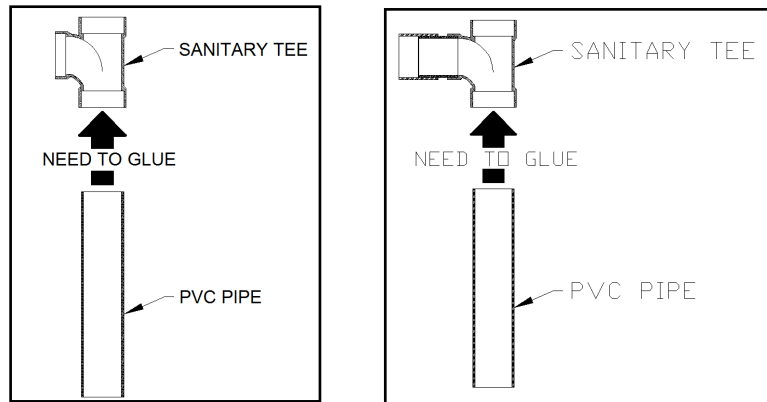


### XL System Assembly

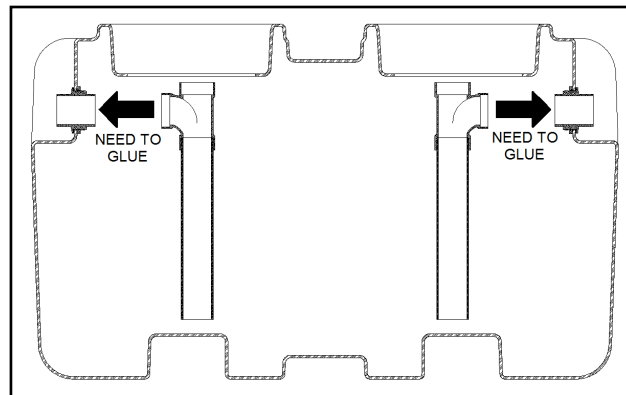
#### Assembly:

The grease interceptor should be installed as close as physically possible to the fixture that is intended to drain into it. This will help protect the incoming lines from becoming clogged with grease.

1. Install the Internal Inlet and Outlet Assemblies in the interceptor.
  - a. Use PVC primer and cement to install the straight piece of PVC pipe to the sanitary tee



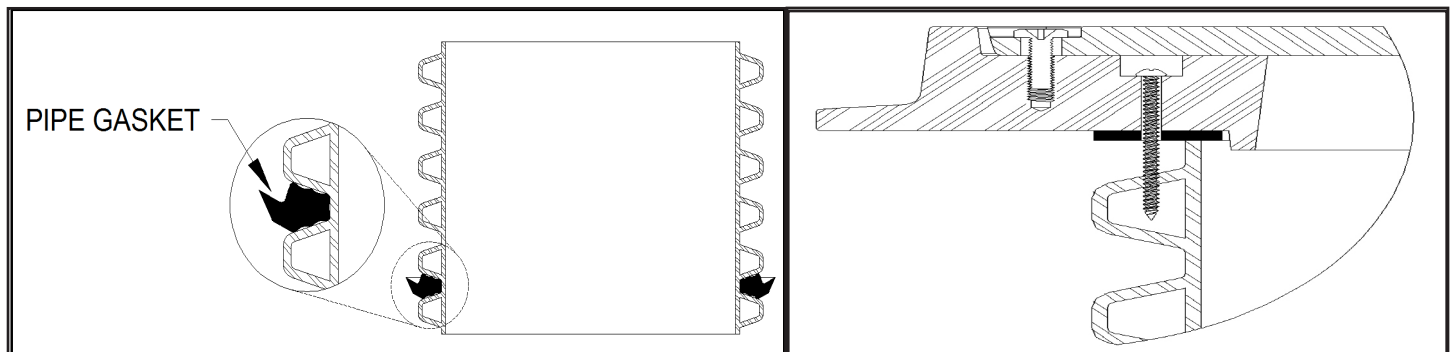
- b. Then install them onto the internal connection of the installed bulk head fitting using PVC primer and cement.



2. Install the 18" diameter corrugated pipe onto the top opening(s) of the body, set the lid on top to measure the finishing height from the top of the lid to the drain pipe connections. The pipe can be cut with a saw to get a correct finishing height.
3. Next, install the pipe gasket onto the bottom of the pipe as shown on the next page.

## XL Extension Collar Installation

- 1) Set the Unit height to grade by installing the 18" diameter corrugated pipe onto the top opening(s) of the body, then insert the lid on top to measure and adjust the finished height from the top to grade. If less extension is need measure the required dimension, mark the extension and cut to fit with a Saw. The extension system is ADS pipe and is designed to be field cut as needed. If a lon-ger extension is required to meet grade, new ADS pipe can be purchased and cut to length in order to equal grade.
- 2) Install the Pipe Gasket onto the bottom of the pipe as shown. Then firmly press the 18" diameter pipe into the top opening(s) of the interceptor. It will bottom out at the pipe stop. The Gasket is designed to fit tightly around the extension collar. Prying the gasket into place with a pry tool can save time and make this process easier.
- 3) Insert the extension collar and pipe gasket onto the opening of the Unit. Press firmly until the extension is seated inside provided recessed channel. The Unit is designed to fit tightly, and installation can be made easier by wetting the receiving area with mild soapy water. This will reduce the friction and allow the extension to side more easily into place.
- 4) Remove the cover from the lid assembly and this will expose predrilled screw holes. Affix the lid gasket with the self adhesive onto the underside of the collar. Place lid assembly onto the top of the corrugated pipe. Connect the lid assembly collar to the pipe with the 6 self tapping screws into the countersunk holes. Replace lid back onto the lid assembly collar.
- 5) When installing the collar on concrete roads, an 8 inch-width concrete ring beam with a 16 inch-width guard circle around it should be poured between the collar and brick setting to make the surrounding compaction level and unmovable.
- 6) When installing the collar on a bituminous road, the collar must be installed AFTER the road is paved. Roller compaction by construction equipment around the collar must be avoided. A hole that is slightly larger than the collar should be inserted before pouring the pavement. The reserved hole can help ensure the installation quality and prolong the usefulness of the installation.



**Extension Collar and Gasket Assembly**

**Lid and Extension Collar Installation**