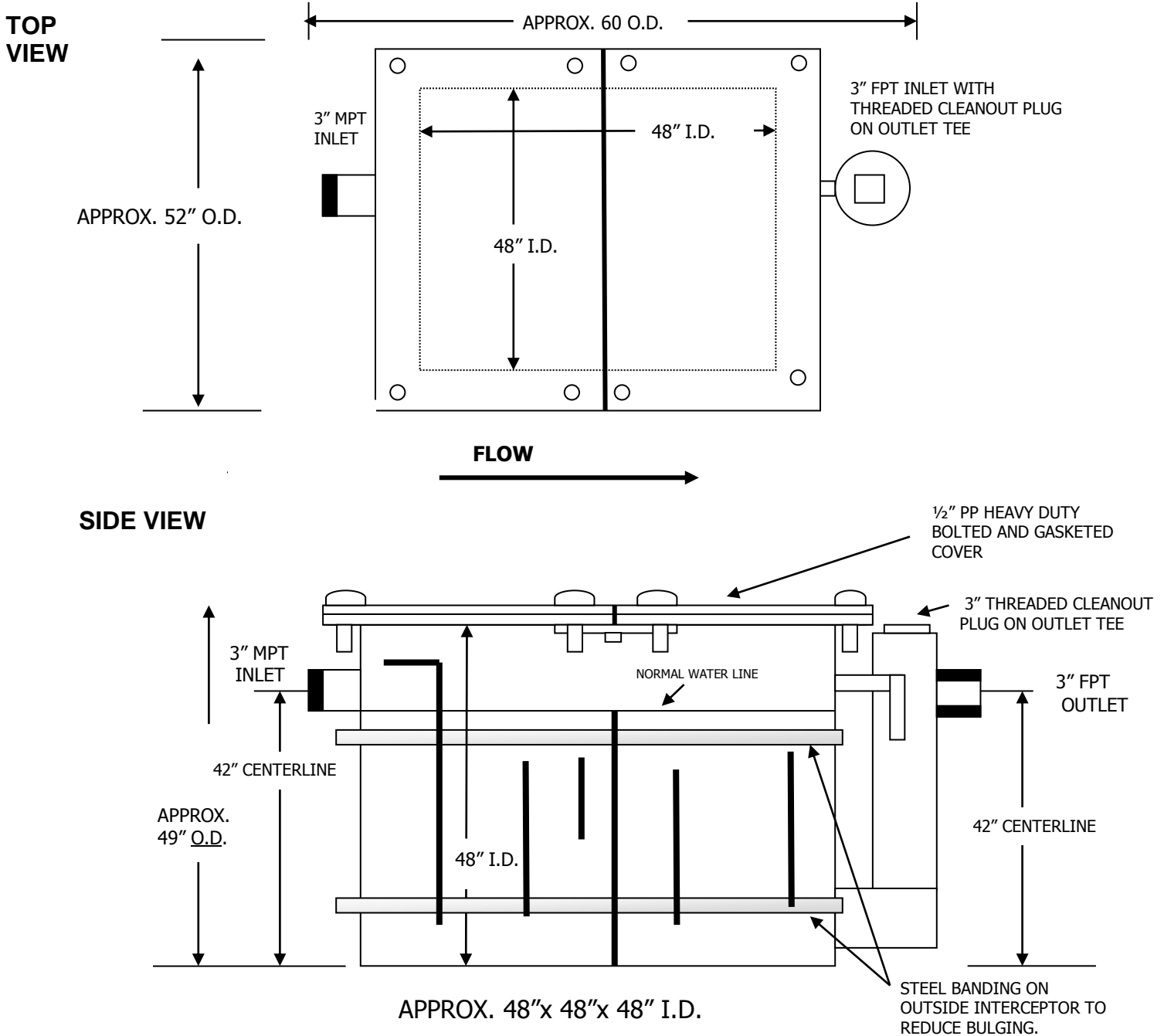




MOLDED SEAMLESS GREASE INTERCEPTOR – Model GI-200 / HDPE



NOTE: SEPARATE 3" FLOW CONTROL TEE FURNISHED WITH RESTRICTOR PLATE
3" CONNECTIONS ARE STANDARD ON THIS UNIT.
(4" CONNECTIONS ARE AVAILABLE, ONLY IF NEEDED.)