



TOWN & COUNTRY PLASTICS

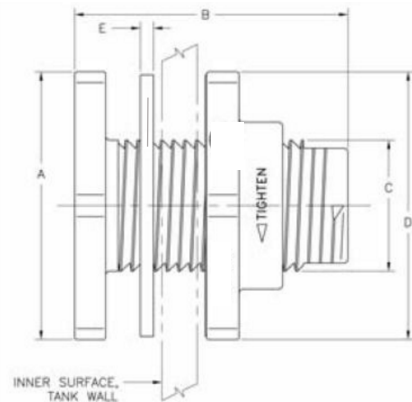
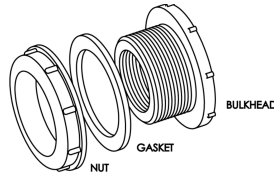
Customized For Precision

10B Timber Lane, Marlboro, NJ 07746 • (732) 780-5300 • FAX: (732) 294-0001 • www.tandcplastics.com

BULKHEAD FITTINGS

- Quickest and easiest method for attaching pipe to tanks.
- Sizes: 1/2"-4"
- Material: PVC / CPVC / Polypropylene
- End Connection: Threaded or Socket*

*PVC and CPVC only



FEATURES:

- The easy way to connect plastic or metal pipe to a tank.
- Installs in just minutes (in the field, on sides or top of tanks).
- Seal tension is adjustable without stopping the flow.
- Easily replaceable.
- EPDM gasket compensates for irregular or curved tank surfaces.
- Special Viton gaskets available, at extra cost.

NOTE: "Hole" in tank wall or cover (manhole) must be smaller than "A" dimensions and larger than "C" dimensions. The fitting hole should be as close to the "C" dimension as possible, so gasket can best seal around fitting hole in tank wall.

NOTE: For use in field mounting of fitting connections on any tanks.