



# HEAVY DUTY SQUARE MANHOLES

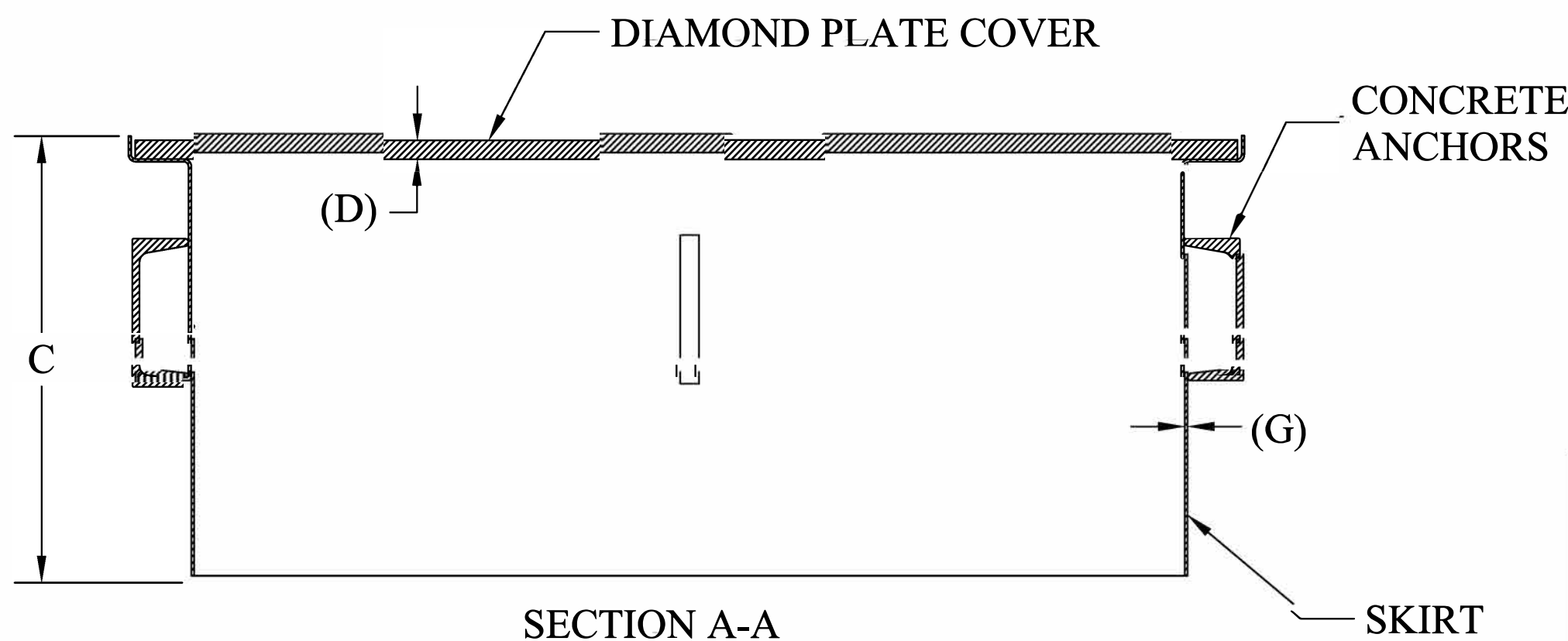
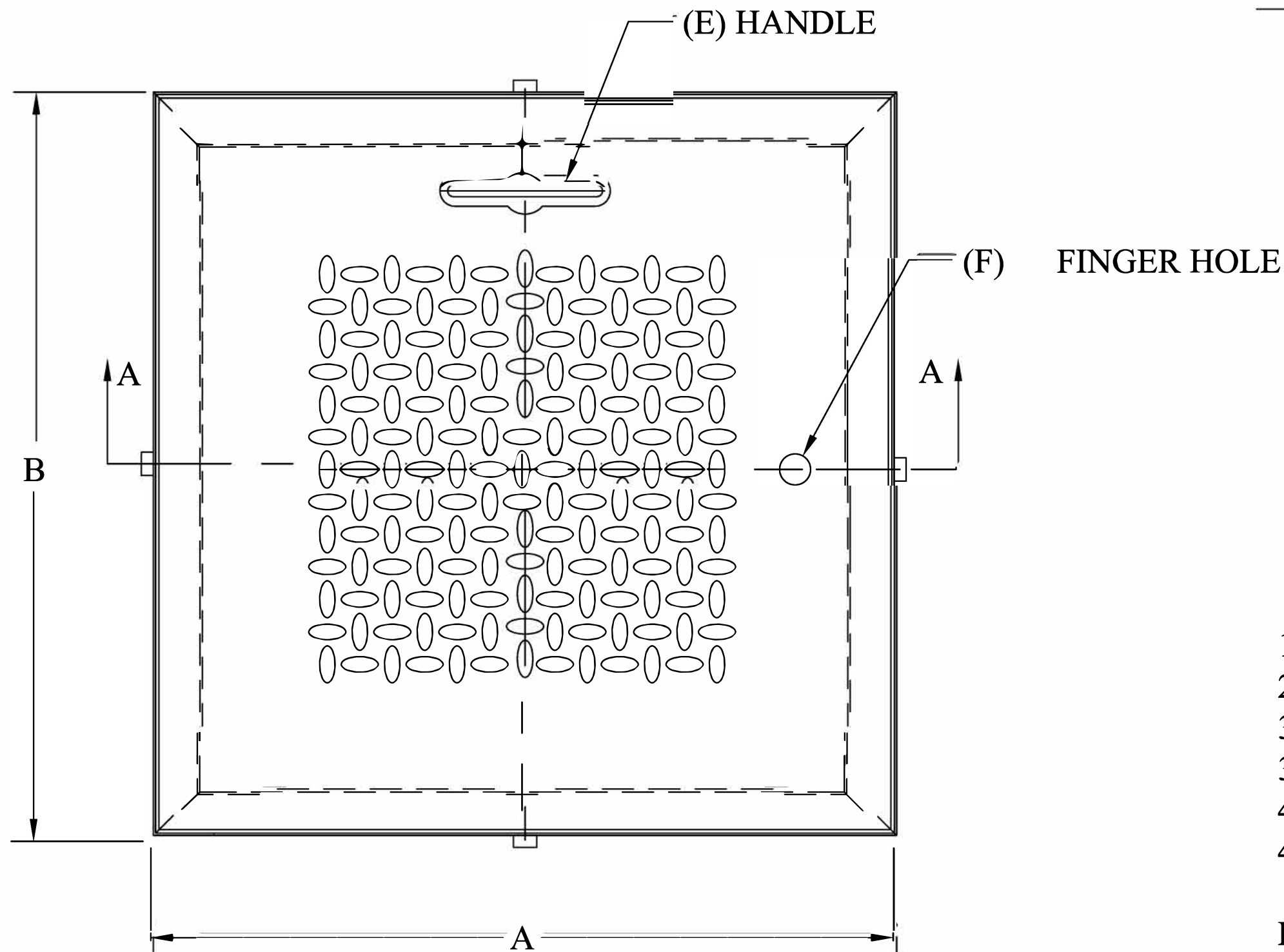
## H-20 TRAFFIC

**FEATURES:**

- 3/8" DIAMOND PLATE COVERS, H-20 TRUCK LOAD RATING, 30" AND LARGER MODELS ARE REINFORCED.
- 1/2" DIAMOND PLATE COVER FOR MANHOLES 42" AND LARGER
- RECESSED PICKING HANDLE(S) ON MANHOLES 30" AND LARGER. FINGER HOLE ON 18" and 24" SIZE.
- 14 GAUGE STEEL FORMED FRAME ON SIZES 18",24" AND 30"
- 11 GAUGE STEEL FORMED FRAME ON 36 AND LARGER SIZES.
- CHANNEL STYLE CONCRETE ANCHORS ON 30" AND LARGER SIZES.
- ALL STEEL IS COATED WITH PROTECTED PAINT.

- 18" diameter round for smaller units only: (weighs approximately 100 lbs.)
- 24" square for #NT-5 only: (weighs approximately 100 lbs.)
- 30" square or diameter for #NT-15 to #NT-30 (weighs approximately 150 lbs.)
- 36" square or diameter for #NT-55 (weighs approximately 200 lbs.)
- 42" square or diameter for #NT-100 to #NT-175 (weighs approximately 300 lbs.)
- 48" square or diameter for #NT-200 & NT-300 (weighs approximately 400 lbs.)

Larger and water tight manholes are available, check with factory.  
Square manholes recommended in most cases



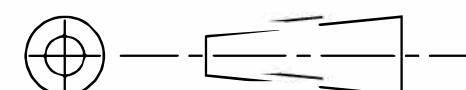
HEAVY DUTY SQUARE MANHOLES							
MODEL	A	B	C	D	E	F	G
18S	18"	18"	10"	3/8"	NA	1	14GA.
24S	24"	24"	10"	3/8"	NA	1	14GA.
30S	30"	30"	10"	3/8"	1	NA	14GA.
36S	36"	36"	12"	3/8"	2	NA	11GA.
42S	42"	42"	12"	1/2"	2	NA	11GA.
48S	48"	48"	12"	1/2"	2	NA	11GA.

**DO NOT SCALE DRAWING**  
UNLESS OTHERWISE SPECIED  
DIMENSIONS ARE IN INCHES.  
TOLERANCES ON ANGLES: ± 1°  
FRACTIONAL: ± 1/16  
2-PLACE DECIMALS: ± 0.062  
3-PLACE DECIMAL: ± 0.032

(10B Timber Lane, Marlboro, NJ 07746 •  
732) 780-5300 • FAX: (732) 294-0001 • www.tandcplastics.com

This document is proprietary and confidential. No part of this document may be disclosed in any manner to a third party without the prior written consent of Fairfield Industries

THIRD ANGLE PROJECTION



SIZE	SCALE	D110118-3	REV.
C	NTS		1
DATE 11/01/18		SHT. 1 OF 1	