

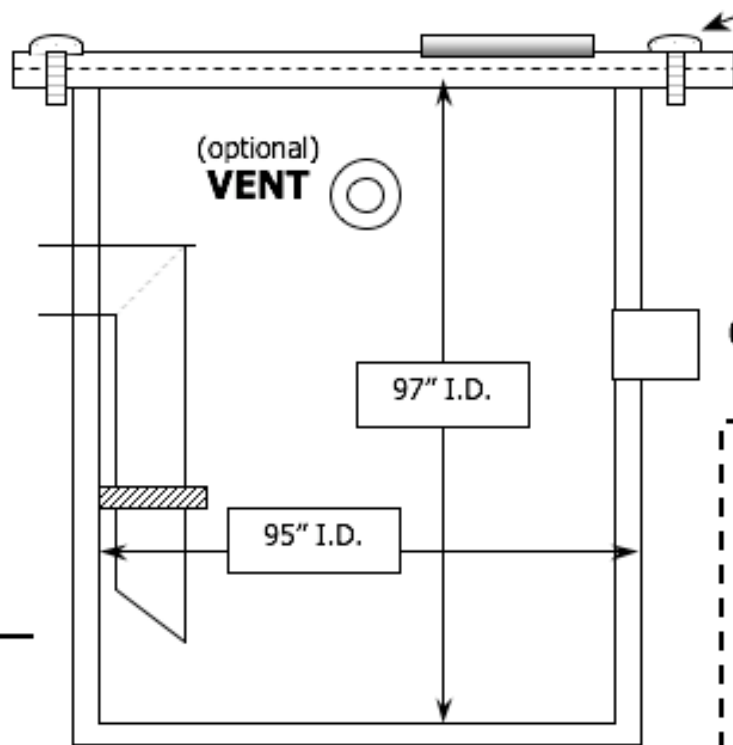


# TOWN & COUNTRY PLASTICS

*Customized For Precision*

10-B Timber Lane, Marlboro, NJ 07746 • (732) 780-5300 • FAX: (732) 294-0001 • www.tandoplastics.com

**MODEL NUMBER**  
**NT-3000 / HDPE**



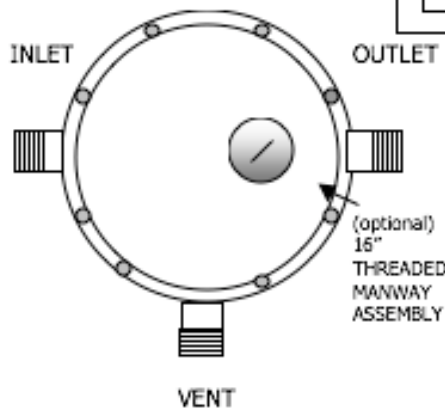
STANDARD MOLDED  
BOLTED & GASKETED  
REINFORCED  
COVER WITH (optional)  
16" THREADED MANWAY  
ASSEMBLY

If tank is to be filled with limestone chips, then we will furnish steel banding for extra support

**TOP VIEW**

NOTE: PLAIN END PIPE FITTING CONNECTIONS AVAILABLE ONLY FOR MECHANICAL JOINT (M/J) FITTINGS!

NOTE: THE VENT CONNECTION IS OPTIONAL. PLEASE ADVISE IF YOU NEED IT FOR THIS JOB?



**TANK HEIGHT 97" I.D.**

**TANK DIAMETER 95" I.D.**

FITTING POSITIONS, HEIGHTS (CENTERLINES) AND SIZES CAN BE CHANGED PRIOR TO MANUFACTURING (PER ENGINEERS NEEDS OR FIELD CONDITIONS). IF CHANGE DESIRED, MARK UP THIS DRAWING ACCORDINGLY.

	FITTING SIZE	FITTING TYPE	FITTING CENTERLINE LOCATION	FITTING CENTERLINES
INLET	4" or 6"	MALE THREADS, OR PLAIN END PIPE	87"	
OUTLET	4" or 6"		83"	
VENT	?		91"	

6" PLAIN END PIPE CONNECTIONS ALSO AVAILABLE, (M/J) COUPLINGS OR FLANGED CONNECTIONS AVAILABLE, AT ADDITIONAL COST.