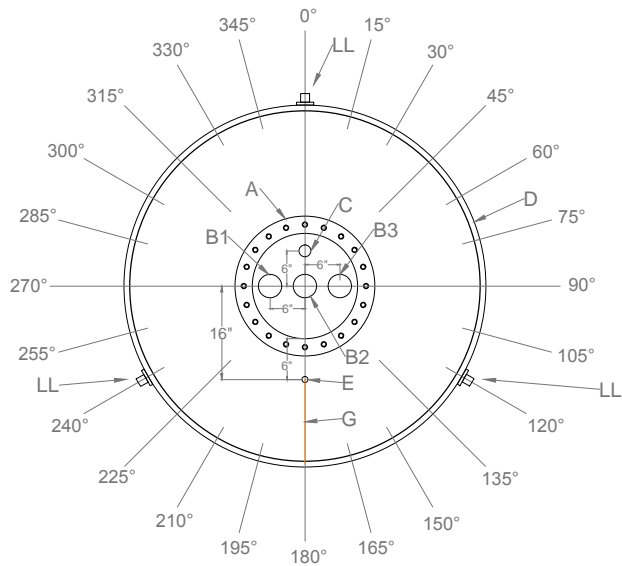
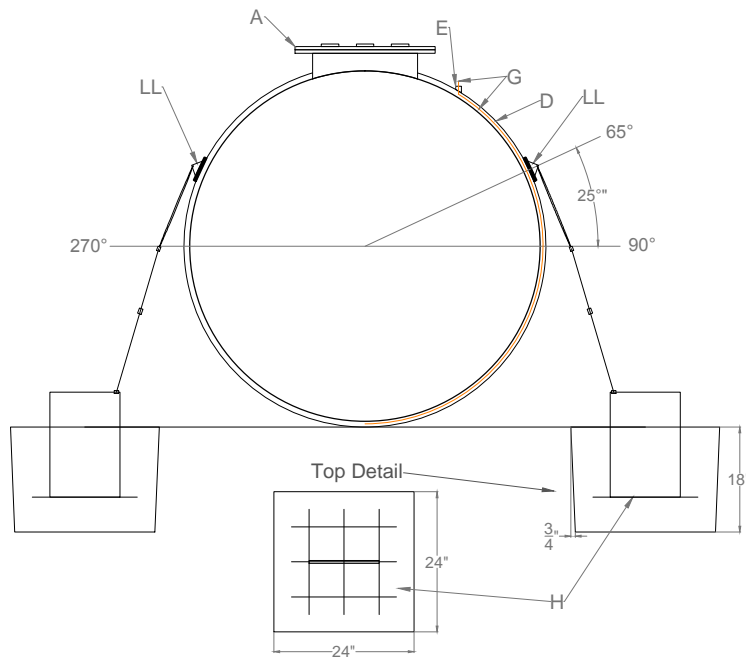


Top View shows degree placement/orientation. Side View shows height placement (orientation may look inaccurate for clarity of height).



Model SPH-550 TW



MARK	QTY	DESCRIPTION	DEGREE	RAD/HT	SERV
A	1	18" Manway	Center	Top	-
B1	1	4" Connection	270°	Rad- 6" (on Manway Cover)	-
B2	1	4" Connection	Center	Center (on Manway Cover)	-
B3	1	4" Connection	90°	Rad- 6" (on Manway Cover)	-
C	1	2" Connection	0°	Rad- 6" (on Manway Cover)	-
D	-	Double Wall	-	-	-
E	1	Connection for Leak Detector	180°	Rad- 16"	-
G	-	Copper Tube -runs to bottom of tank	Runs through E	See Drawing	Leak Detector
H	3	3/8"x18" Rebar Construction	See Drawing	See Drawing	-
LL	-	Lifting Lug/Hold Down	0° 120° 240°	See Drawing	-

GENERAL NOTES:

1. Tank to be fabricated according to standards which are in accordance with ASTM-4097.
2. All dimensions are in inches.
3. External gel coat to be white in color and 5 mil thick. No field painting to be provided by Edwards FRP Tank & Repair.
4. All flanged nozzles bolt hole are to straddle principle tank center lines. Nozzles are to project 5" from structural wall unless otherwise noted. All flanges 4" and smaller will be gusseted.
5. Tank must be vented properly. If vent screens are used, clean frequently.
6. Tank is designed for atmospheric pressure storage only. Failure to observe this could result in tank failure and void warranty.
7. Hardware to be Zinc.
8. Anchor bolts to be supplied by customer.
9. Anything not listed in this drawing will not be provided by Edwards FRP Tank & Repair.

FOR APPROVAL

DATE APPROVED: _____

APPROVED BY(sign and print name legibly): _____

PLEASE CHECK ALL LOCATIONS & MEASUREMENTS SHOWN
NOTE ALL CHANGES IN RED

TANK	TANK DIA.	62"
	TANK ST. WALL/HEIGHT	Spherical
	TANK TOP	-
	TANK BOTTOM	-
	TANK THICKNESS	1/4"
GENERAL	NO. REQ'D	1
	VESSEL CONTENT	Bio Water
	CONCENTRATION	-
	VESSEL CAPACITY	550 Gallons
	EMPTY WEIGHT	-
DESIGN	BOLTING MATERIAL	Zinc
	GASKET MATERIAL	EPDM
	EXT. SURFACE	Clear
	DESIGN CODE	ASTM 4097
	SPECIFIC GRAVITY:	1.2
	DESIGN PRESSURE:	Atmospheric
	DESIGN TEMPERATURE:	Ambient
	LINER VEIL:	C-Veil
	LINER RESIN:	8301 Premium Vinyl Ester
	TOTAL LINER THICKNESS:	125 mils (1/8")
STRUCTURE RESIN:	Isophthalic	
CATALYST RESIN:	MEKP	



DRAWING TITLE: Spherical Tank

Town & Country Plastics, LLC 10B Timber Lane Marlboro, NJ 07746	P.O. #
	QUOTE # 18-3576
DRAWN BY:	
FOR:	DATE DRAWN/REV DATE 04-02-2018 -
	DRAWING # REV: 3169 A