

TOWN & COUNTRY PLASTICS, INC.

P.O. BOX 269, MORGANVILLE, N.J. 07751 USA

732-780-5300 • FAX: 732-294-0001

WWW.TANDCPLASTICS.NET • E-mail: tandcplastics@aol.com

LEAK DETECTION SYSTEM FOR TRIPLE AND DOUBLE WALL SPHERICAL FRP UNDERGROUND TANKS**

Model #VLDS

T&C VACUUM LEAK DETECTION may be used with most double wall containers, but it is specifically designed for use with T&C double wall fiberglass tanks.

Caution: If this unit is to be installed for a double wall tank other than a T&C fiberglass tank, a suction line must be installed between the inner and outer walls to the bottom of the tank. It should also be noted that some welds on steel tanks may become porous over a period of years. The product in the tank might not leak out, but a few molecules at a time, will leak in and eventually set off the alarm.



TOWN & COUNTRY PLASTICS, INC.

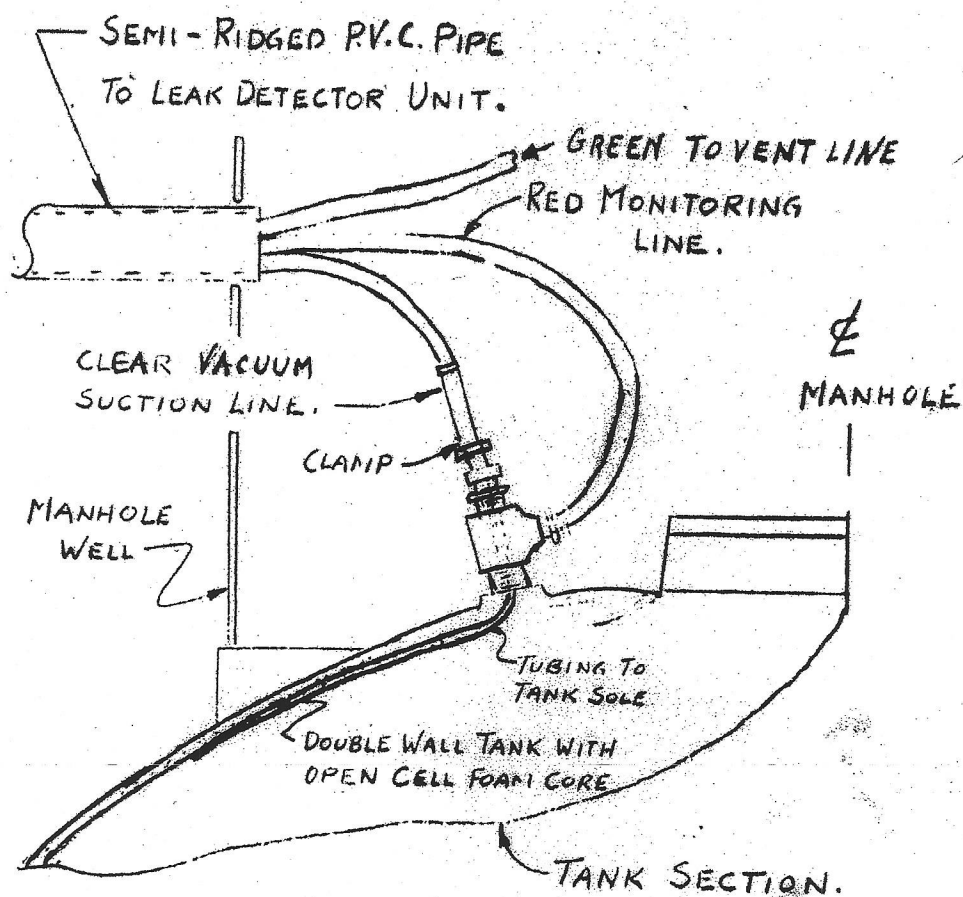
P.O. BOX 269, MORGANVILLE, N.J. 07751 USA

732-780-5300 • FAX: 732-294-0001

WWW.TANDCPLASTICS.NET •

E-mail: tandcplastics@aol.com

PAGE 2



INSTALLATION OF VACUUM & MONITORING
LINES TO TANK PROPER.



TOWN & COUNTRY PLASTICS, INC.

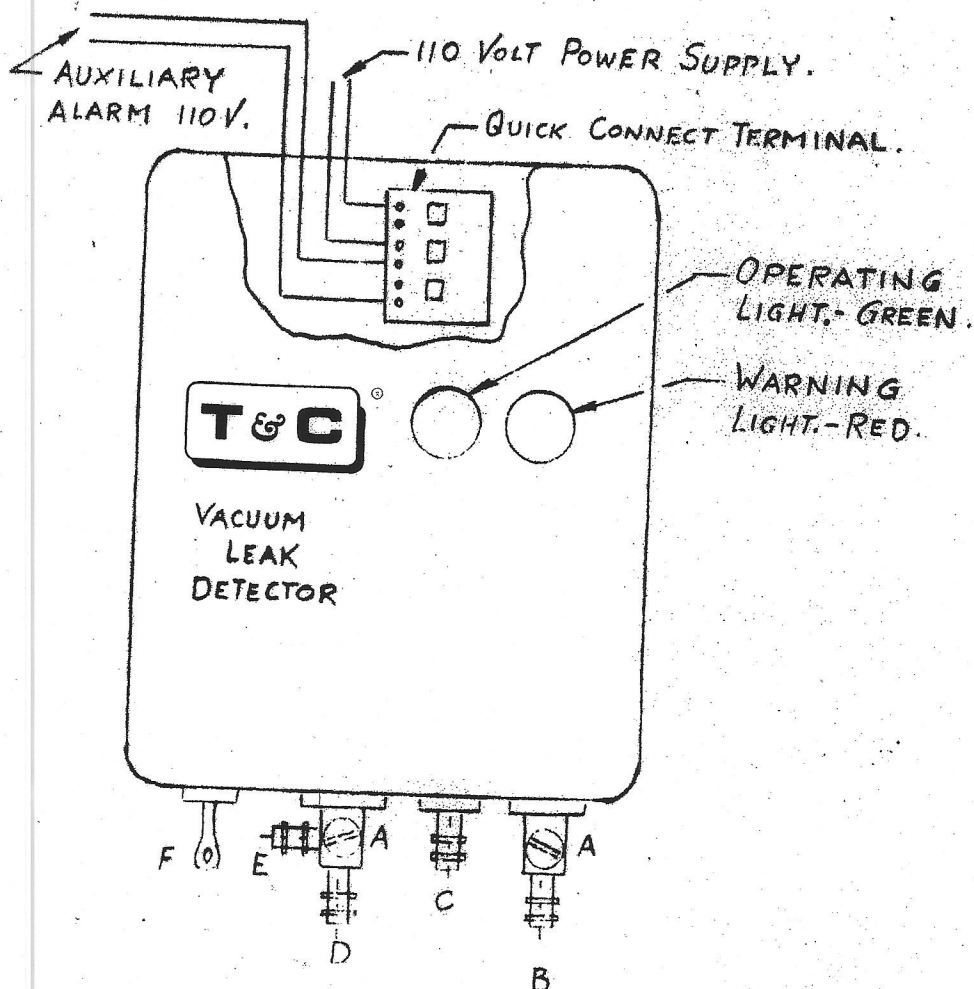
P.O. BOX 269, MORGANVILLE, N.J. 07751 USA

732-780-5300 • FAX: 732-294-0001

WWW.TANDCPLASTICS.NET •

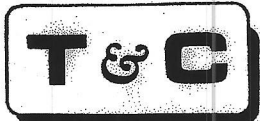
E-mail: tandcplastics@aol.com

PAGE 3



- A = TEST VALVES.
- B = SUCTION. - CLEAR P.V.C. TUBING.
- C = EXHAUST. - GREEN P.V.C. TUBING.
- D = MONITORING. - RED P.V.C. TUBING.
- E = VAC. GAUGE. - RED P.V.C. TUBING.
- F = ALARM BUZZER W/SEAL.

LEAK DETECTOR UNIT.



TOWN & COUNTRY PLASTICS, INC.

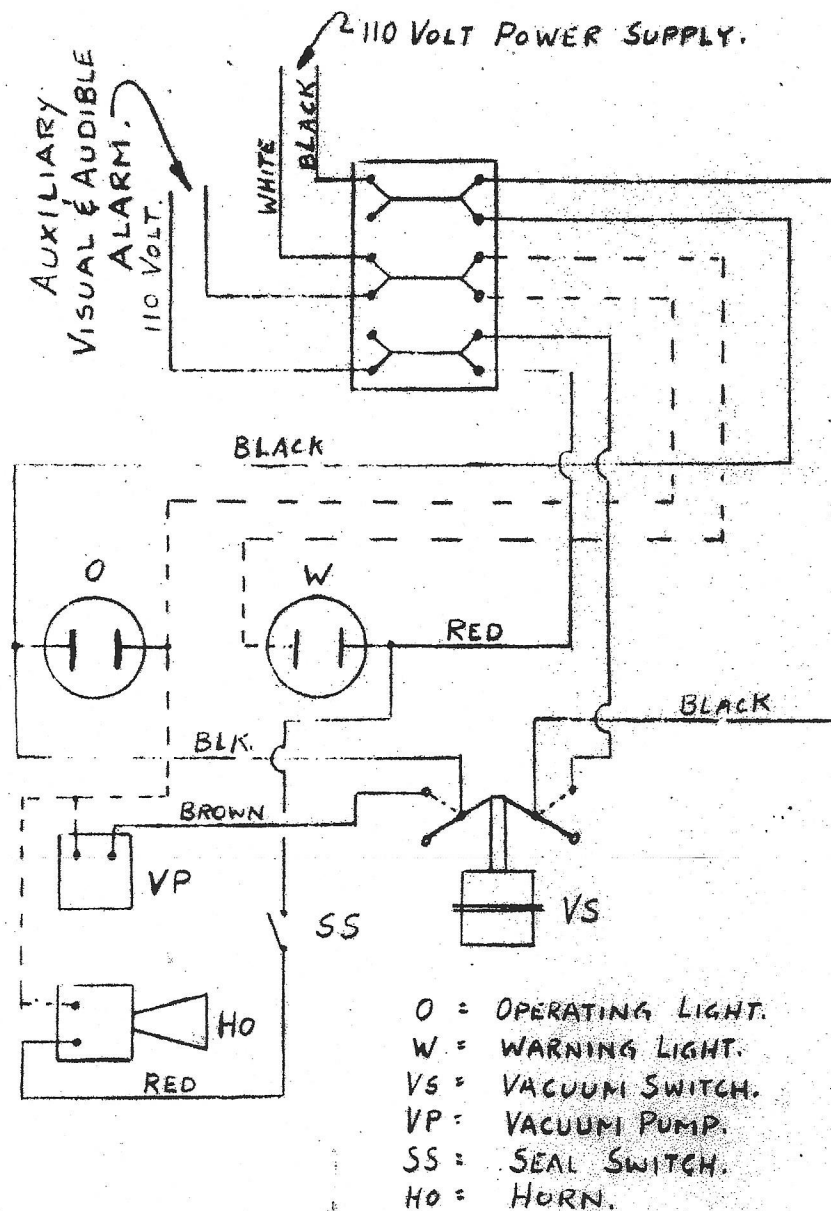
P.O. BOX 269, MORGANVILLE, N.J. 07751 USA

732-780-5300 • FAX: 732-294-0001

WWW.TANDCPLASTICS.NET •

E-mail: tandcplastics@aol.com

PAGE 4



WIRING DIAGRAM.

VACUUM LEAK DETECTOR.



TOWN & COUNTRY PLASTICS, INC.

P.O. BOX 269, MORGANVILLE, N.J. 07751 USA

732-780-5300 • FAX: 732-294-0001

WWW.TANDCPLASTICS.NET •

E-mail: tandcplastics@aol.com

PAGE 5

VACUUM LEAK DETECTORS are furnished with the following:

- (1) 100 ft. clear P.V.C. tubing (suction)
- (2) 100 ft. green P.V.C. tubing (vent or pump exhaust)
- (3) 105 ft. red P.V.C. tubing (monitoring & gauge line)
- (4) 2 screws & shields (fastening control to wall)
- (5) Secondary visual & audible alarm
- (6) Vacuum gauge
- (7) Fittings and inserts
 - A. 1/4" female I.P.S. to tubing (gauge)
 - B. 1/4" s.s. tubing clamp (suction line at tank)
 - C. 3/8" male I.P.S. to tubing (red monitor at tank)
 - D. 1/4" male I.P.S. to tubing (connection to vent line)
- (8) Condensate trap (suction line)



TOWN & COUNTRY PLASTICS, INC.

P.O. BOX 269, MORGANVILLE, N.J. 07751 USA

732-780-5300 • FAX: 732-294-0001

WWW.TANDCPLASTICS.NET •

E-mail: tandcplastics@aol.com

PAGE 6

INSTALLATION INSTRUCTIONS:

VACUUM LEAK DETECTORS come with all items.

- (1) Cut a 5-ft. length off the red P.V.C. tubing and set aside for gauge connection.
- (2) Mount the main control on a wall as close to the tank as possible using screws provided.
- (3) Mount the auxiliary visual and audible alarm on the same wall, or remotely in the supervisor's office.
- (4) Snake the small (red, green and clear) tubing through a 1" semi-rigid P.V.C. tube (not furnished), pipe or electrical tubing, being sure that there are no sharp edges. Allow small tubing to protrude 2 to 5 ft. past encasement tube on each end.
- (5) Lay completed tube (above) in a trench from the area of the control panel to the tank, making sure the line pitches down 3 or 4 degrees toward the tank.
- (6) At the tank:
 - a. Connect the small green tubing to the vent line with the fitting provided. Tank installer is to provide suitable tee in vent line for this purpose.
 - b. Connect the small red tubing to the "bull" of the tee mounted on the tank. This is the vacuum monitoring line.
 - c. Connect the small clear tubing to the tubing projecting out of the small tee. This clear tubing is marked "**TANK END**", and this end is reamed slightly to fit over the tubing coming out of the tank. Secure the soft clear tubing the semi-rigid tubing with the clamp provided.



TOWN & COUNTRY PLASTICS, INC.

P.O. BOX 269, MORGANVILLE, N.J. 07751 USA

732-780-5300 • FAX: 732-294-0001

WWW.TANDCPLASTICS.NET •

E-mail: tandcplastics@aol.com

PAGE 7

(7) Control Panel:

- a. Connect the small green tubing to the outlet on the bottom of the control marked exhaust. The tubing need only be pushed onto this connection- no clamps required.
- b. Connect the small red tubing onto the vertical outlet marked gauge.
- c. With the spare red tubing you cut off in item 1 of these instructions, connect this red tubing to the horizontal outlet of the same fittings mentioned in 7b. The other end of this short red tubing should be attached to the gauge using the fitting provided.
- d. Cut approximately 12" off the end of the clear tubing. Attach one end of this short section to the condensate trap. Attach the other end to the connection on the control marked suction. Attach the clear tubing coming from the tank to the tank to the other connection on the condensate trap.

- (8) Mount the gauge with the tubing already attached to the panel board using an electrician's cable or tubing strap.



TOWN & COUNTRY PLASTICS, INC.

P.O. BOX 269, MORGANVILLE, N.J. 07751 USA

732-780-5300 • FAX: 732-294-0001

WWW.TANDCPLASTICS.NET •

E-mail: tandcplastics@aol.com

PAGE 8

GENERAL INSTRUCTIONS

When the electric switch is on, audible and visual alarms will also be on.

The external switch on the lower left corner of the control box will shut off the control box buzzer and light only. If the auxiliary visual and audible alarm is connected, it will continue to operate.

Within 10 minutes, 2.5" of vacuum should be pulled and both alarms should shut off.

IF THE ALARM DOES NOT SHUT OFF:

- A. The screw or valve that the 2 red hoses are connected to should be in a full counter-clockwise (open) position.
- B. The screw or valve on the control where the clear plastic tubing is connected To should be in full clockwise (closed) position.
- C. Check all fittings and connection for leaks.

TO PERIODICALLY CHECK THE FUNCTION AND INTEGRITY OF THE CONTROL

Insert a screwdriver in the screw (valve) where the clear small tubing is connected at the bottom of the control. Turn this screw slowly counter-clockwise to open the valve. This will let air in and break the vacuum. The alarms will turn on as the vacuum goes down. When the vacuum reaches zero, turn the screw clockwise to shut the valve. The vacuum will increase to approximately 2.5" and the pump and alarms will shut off.



TOWN & COUNTRY PLASTICS, INC.

P.O. BOX 269, MORGANVILLE, N.J. 07751 USA

732-780-5300 • FAX: 732-294-0001

WWW.TANDCPLASTICS.NET • E-mail: tandcplastics@aol.com

Page 9

T&C Warranty

T&C warrants that our vacuum leak detector, when properly installed in accordance with our instructions, will meet our published specifications and be free from material defects in materials and workmanship for a period of one year following date of original shipment.

T&C sole liability for any defect will be repair or replacement of vacuum leak detector control only, F.O.B. the factory. In no event will T&C liability under this warranty extend to labor, installation costs, or consequential damages or losses suffered on incurred in connection therewith.