



TOWN & COUNTRY PLASTICS

Customized For Precision

10-B Timber Lane, Marlboro, NJ 07746 • (732) 780-5300 • FAX: (732) 294-0001 • www.tandcplastics.com

T&C CUSTOM TRENCH DRAINS AND GRATES

Made of:

PP (Polypropylene) or HDPE (High Density Polyethylene)



SEE MODELS AND OPTIONS AVAILABLE IN THIS CATALOGUE.



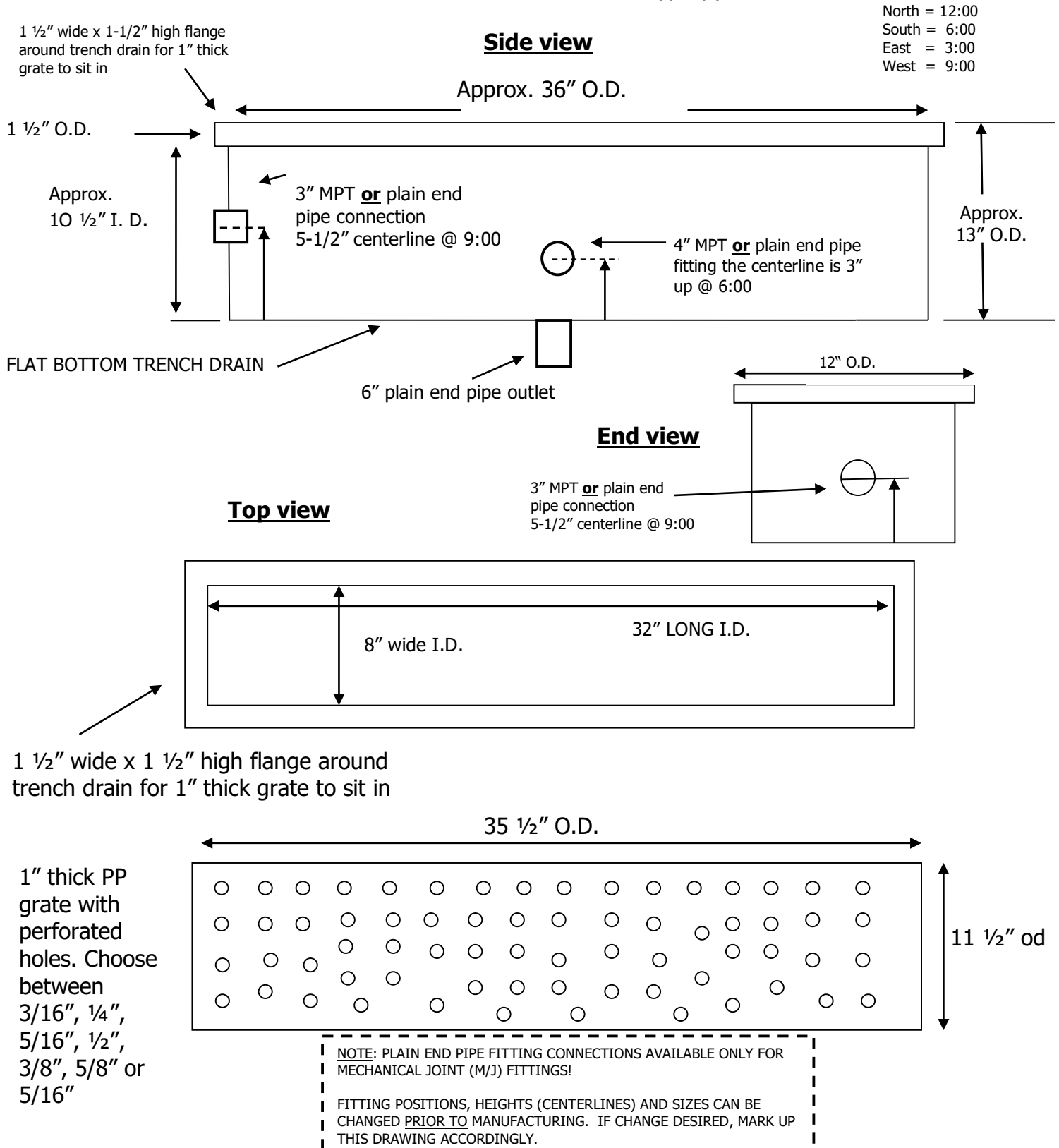
TOWN & COUNTRY PLASTICS

Customized For Precision

10-B Timber Lane, Marlboro, NJ 07746 • (732) 780-5300 • FAX: (732) 294-0001 • www.tandoplastics.com

Polypropylene flat bottom trench drain with bottom outlet

Fabricated from 1/2" thick white Polypropylene





TOWN & COUNTRY PLASTICS

Customized For Precision

10-B Timber Lane, Marlboro, NJ 07746 • (732) 780-5300 • FAX: (732) 294-0001 • www.tandcplastics.com

Polypropylene sloped trench drain with bottom outlet

Fabricated from 1/2" thick white Polypropylene

Side view

1 1/2" wide x 1" high flange
around trench drain for 1"
thick grate to sit in

Approx.
I.D. OR O.D.

Approx. 96" O.D.

Approx. 6"
I.D. OR O.D.

Sloped to outlet

welded

4" Plain End Pipe
Bottom Outlet

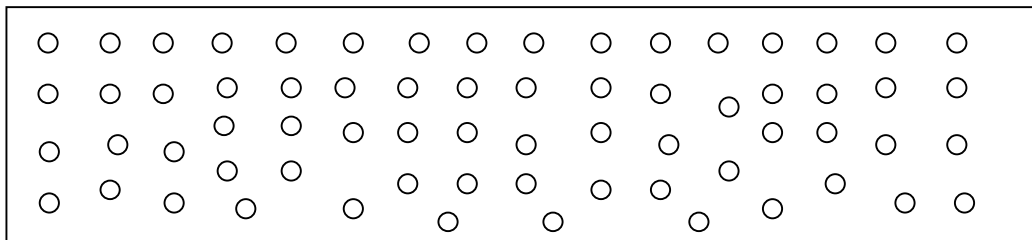
1 1/2" wide x 1/2" high flange around
trench drain for 1/2" thick grate to sit in

Top view

6" wide I.D. OR O.D.

1/2" thick PP
grate with
perforated
holes.

Choose
between
3/16", 1/4",
5/16", 1/2",
3/8", 5/8" or
5/16"





TOWN & COUNTRY PLASTICS

Customized For Precision

10-B Timber Lane, Marlboro, NJ 07746 • (732) 780-5300 • FAX: (732) 294-0001 • www.tandcplastics.com

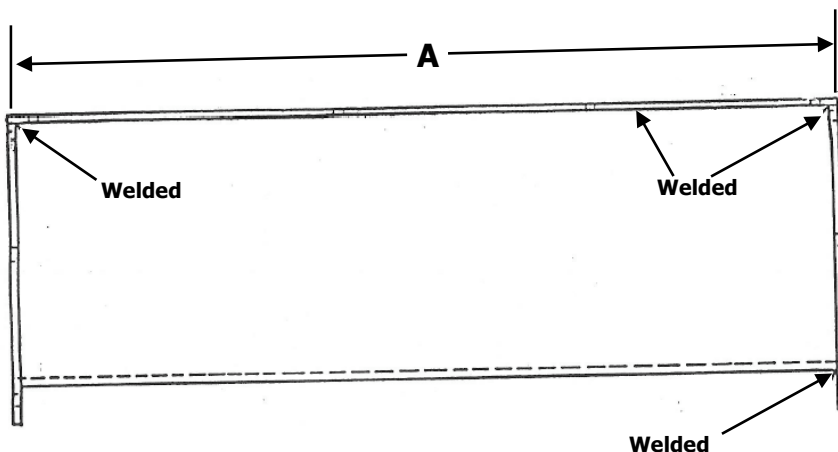
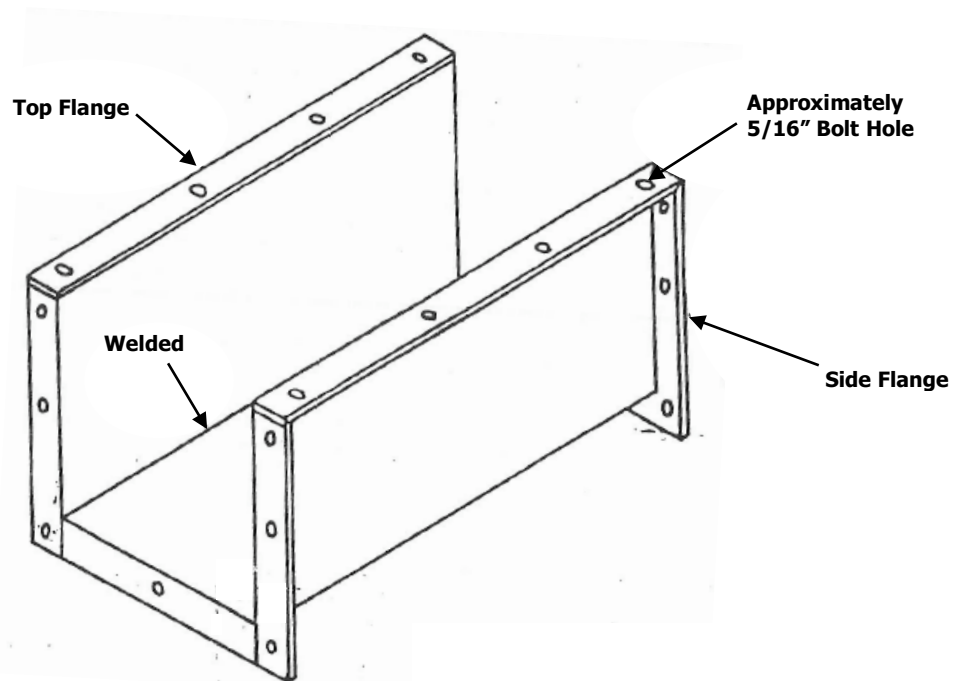
RUNNING (IN-LINE) TROUGH

Model #PPT-200

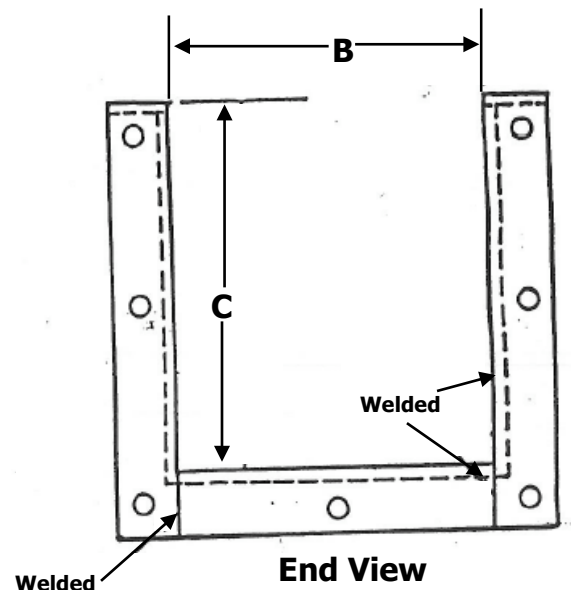
Color: White Polypropylene

Wall Thickness: 1/4" throughout (including flanges)

Flange Width: 1 1/4" throughout (includes 1/4" wall thickness)



Side View



End View



TOWN & COUNTRY PLASTICS

Customized For Precision

10-B Timber Lane, Marlboro, NJ 07746 • (732) 780-5300 • FAX: (732) 294-0001 • www.tandcplastics.com

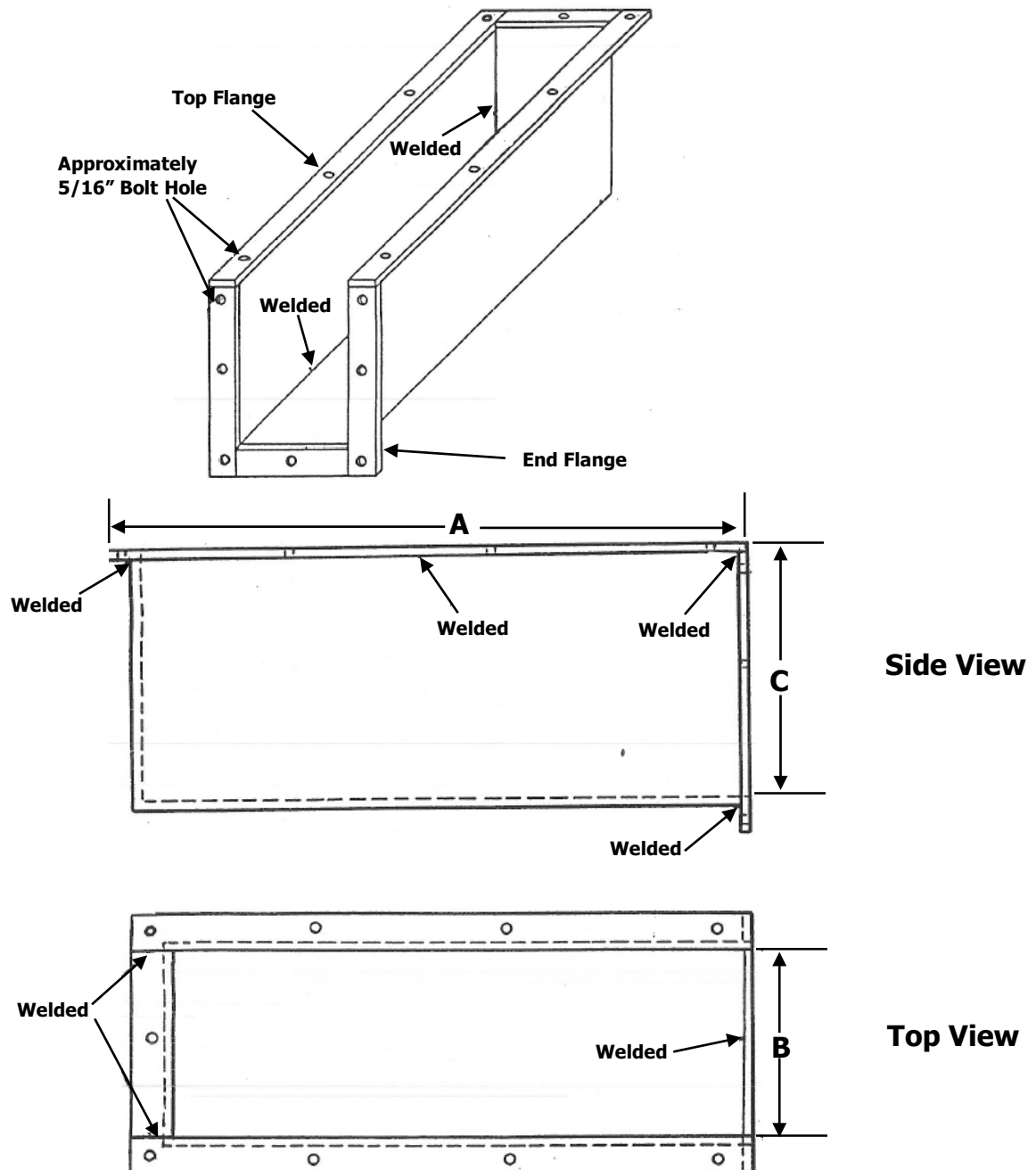
END TROUGH

Model #PPT-100

Color: White Polypropylene

Wall Thickness: 1/4" throughout (including flanges)

Flange Width: 1 1/4" throughout (includes 1/4" wall thickness)





TOWN & COUNTRY PLASTICS

Customized For Precision

10-B Timber Lane, Marlboro, NJ 07746 • (732) 780-5300 • FAX: (732) 294-0001 • www.tandcplastics.com

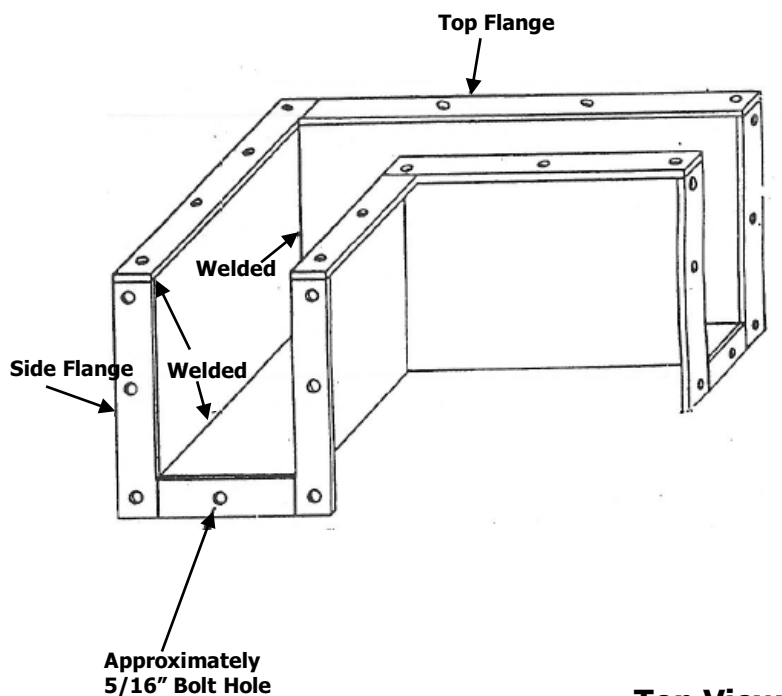
CORNER TROUGH

Model #PPT-300

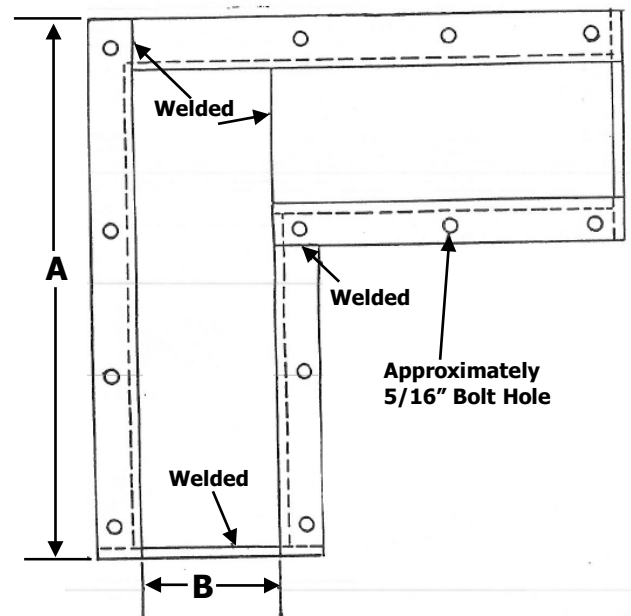
Color: White Polypropylene

Wall Thickness: $\frac{1}{4}$ " throughout (including flanges)

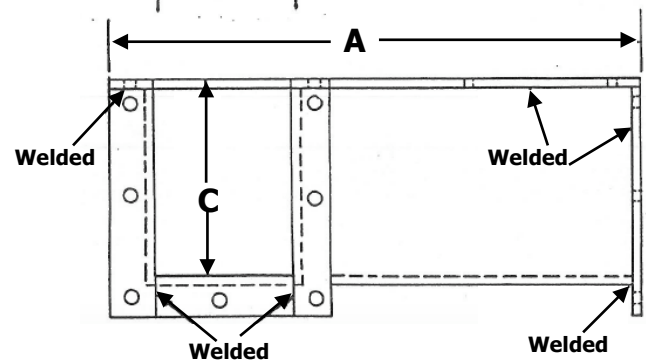
Flange Width: $1 \frac{1}{4}$ " throughout (includes $\frac{1}{4}$ " wall thickness)



Top View



Side View





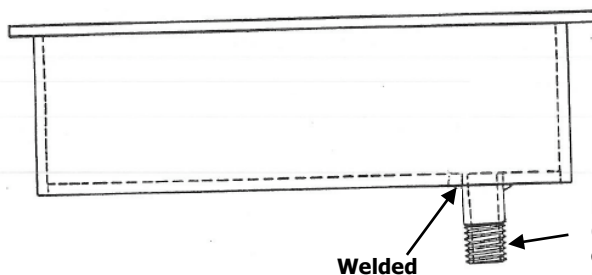
TOWN & COUNTRY PLASTICS

Customized For Precision

10-B Timber Lane, Marlboro, NJ 07746 • (732) 780-5300 • FAX: (732) 294-0001 • www.tandcplastics.com

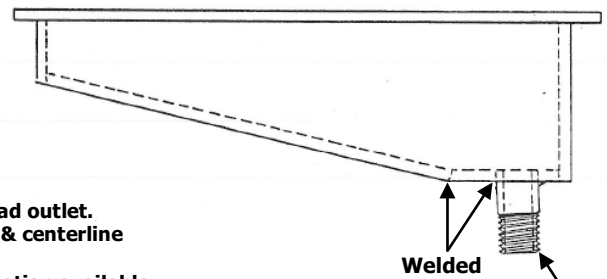
OPTIONAL TROUGH OUTLETS (Side Views)

**Bottom Outlets
Any Flat Bottom Troughs**



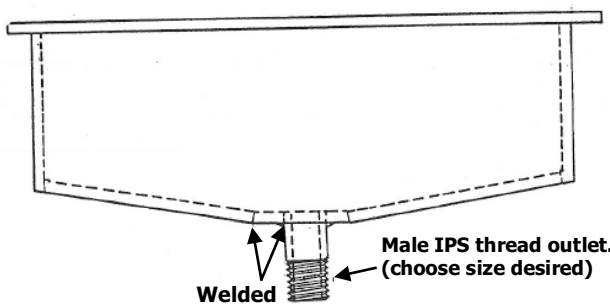
Male IPS thread outlet.
(choose sizes & centerline
desired)
NOTE: Any location available.

**End Outlets
Sloped Bottom Troughs**



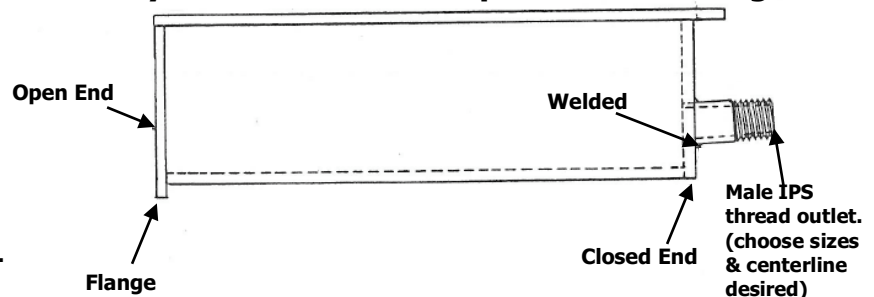
Male IPS
thread outlet.
(choose sizes
& centerline
desired)

**Center Outlets
Sloped Bottom Troughs**



Male IPS thread outlet.
(choose size desired)

**End Wall Outlets
Any Flat Bottom OR Sloped Bottom Troughs**



Male IPS
thread outlet.
(choose sizes
& centerline
desired)

NOTE: Standard outlet connections are male IPS threads. However, other connections and adaptors available, at extra cost & possibly delivery times. Check with T&C for details.



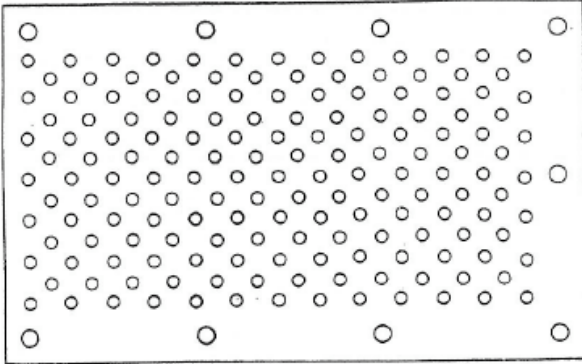
TOWN & COUNTRY PLASTICS

Customized For Precision

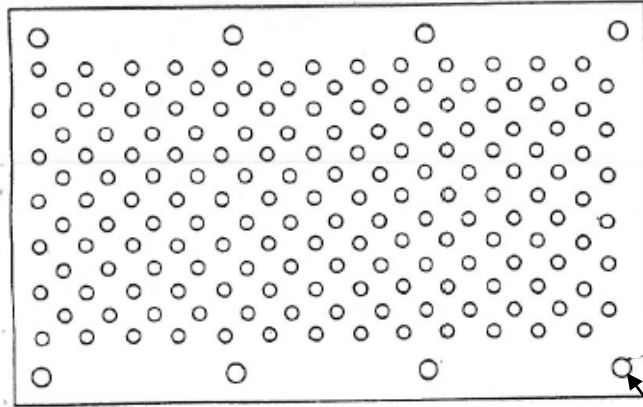
10-B Timber Lane, Marlboro, NJ 07746 • (732) 780-5300 • FAX: (732) 294-0001 • www.tandoplastics.com

CUSTOM MADE (Top Views)

**Grate for End Troughs
Model #PPG-100**



**Grate for Running (in-line) Troughs
Model #PPG-200**



Approximately
5/16" recessed
or regular bolt
holes (choose).

Choose between the following hole sizes:

- ☐ 3/16"
- ☐ 5/16"
- ☐ 1/2"
- ☐ 3/4"
- ☐ 1/4"
- ☐ 3/8"
- ☐ 5/8"
- ☐ Other size (specify) _____

BOLT HOLES:

- ☐ Recessed
- ☐ Regular

GRATE THICKNESS: 1" or 1/2"
(other thicknesses available)

COLOR: White polypropylene for 1/2" thickness.
Natural (translucent) polypropylene for 1"
thickness.

Other colors available, upon request.

NOTE: Hole spacing, quantities and sizes may
vary somewhat on actual finished grates.

**Grate for Corner Troughs
Model #PPG-300**

