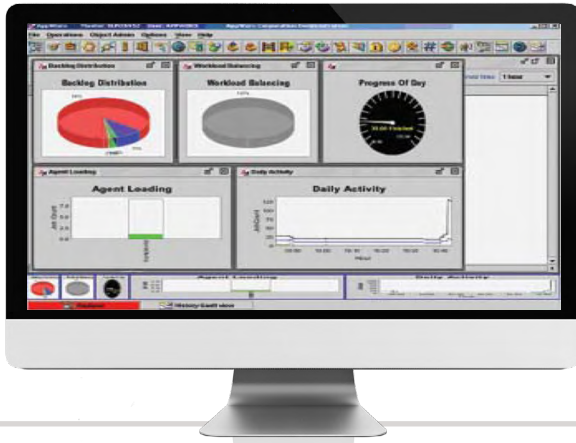


# Graphical Analysis Package

Optimize Your Environment



The Automatic platform offers several powerful graphical analysis tools providing a clear view of your scheduling environment, allowing you to reduce development effort while minimizing response times to errors. This results in increased end user satisfaction levels, and an overall optimization of your enterprise.

The Graphical Analysis Package includes the following tools:

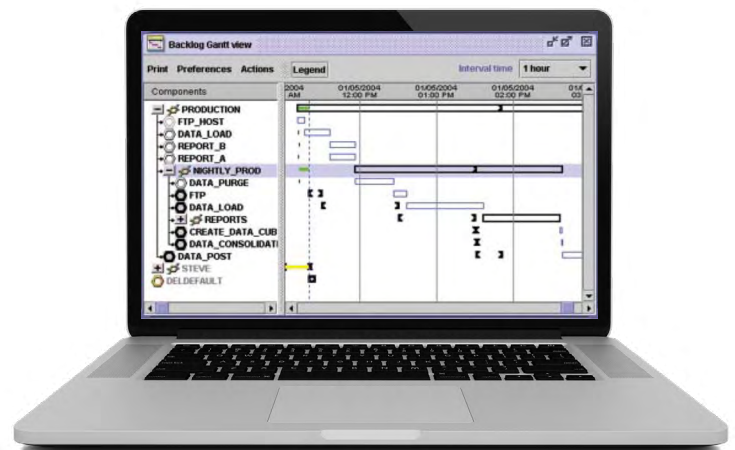
**Gantt Charts** – Gantt charts provide a graphical illustration of a schedule that helps you to plan, coordinate, and track specific tasks in a project. In Automatic, the project is a chain (or job stream) and the charting capability provides visibility to expected run times for processes within the job stream. Automatic does more than simply display expected run-times however, showing the actual run time of running jobs plotted against the expected run time. In this way you can view at a glance modules that are running longer than the expected run time, so you can investigate a possible problem before it becomes an incident.

**Backlog Gantt Chart** – Displays jobs that are currently being processed. Provides full range of actions on jobs including holding, killing, and resetting.

**History Gantt Chart** – Provides expected and actual run times for jobs that have completed. Chain Gantt View – Provides developers a quick way to preview the expected run time of a chain and each of its components. Useful for planning production schedules.

## Benefits

- **Graphical Forecast** – Provides a convenient method of previewing the jobs that will be running over the next 24-hour period.
- **Chain Simulation** – Quickly preview the execution of jobs in a job stream to ensure they will execute in the expected sequence. Check the consequences of failed jobs by setting fail flags on selected jobs.
- **History Reports** – Use an extensive set of history reports to review statistics about how jobs completed. Look at such information as run times, maximum load by hour and day, missed jobs, and jobs sorted by application.
- **Custom Report Writer** – Get the exact information you want by quickly creating custom reports for the Automatic database as well as any other database in your enterprise.



Gantt charts show average run time for jobs, allowing you to quickly predict the day's processing run and easily distribute server load for maximum efficiency.

For more information or product demonstration please visit [www.automic.com](http://www.automic.com)