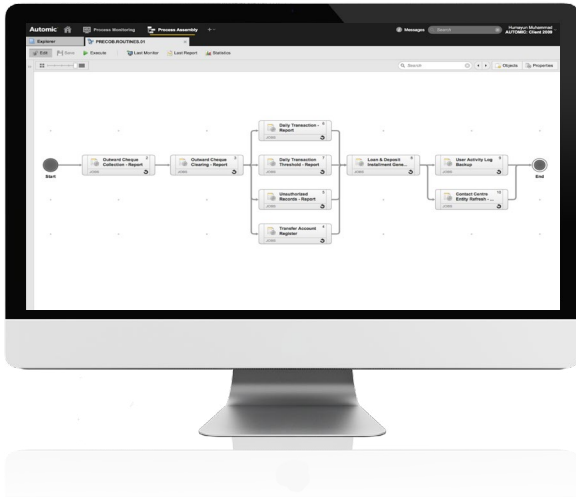


Automatic Workload Automation for Temenos T24



The challenge:

What if you could automate the manual procedures involved in the Temenos T24 workload, to reduce the risk of errors and cut down on delays? What if you could make it easier for your skilled operators to:

- Start/Stop various T24 processes with a click of a button
- Trigger all Pre/Post COB related processes at once – with correct dependencies in a streamlined order
- See the status and progress of T24 batches without having to comb through log files
- Spot issues proactively rather than reactively when they've already become problems
- Improve T24 Security via refraining users from having direct access to powerful Operating System and/or T24 commands
- Manage T24 agents centrally instead of using multiple console windows

Business Challenge:

You are well aware of how time-consuming and fraught with potential delays your COB process can be. Ensuring timely completion in order not to affect the start of the next business day is critical to banking operations and customer service. However this can be a struggle if you don't have enough visibility and control over all your T24 related processes.

And as your bank's business grows, you could be faced with a COB process that takes even longer to execute, and hard to predict.

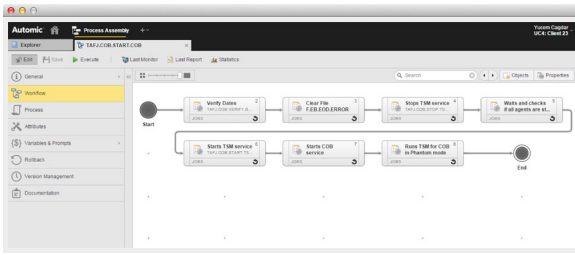
And how much more efficient would all your operations be if your COB process was integrated with other processes, such as file transfers, backups and reporting, or any other utility that may depend on the T24 COB processes or need to run alongside it.

Key Benefits: T24 Automation and Monitoring

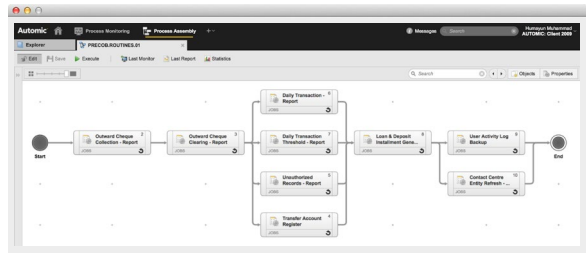
- Simplify Management of T24 Workload & Lower Maintenance Overhead: Intuitive GUI eliminates need for highly qualified T24 staff to use command line or web interface when managing COB processing
- Improved Security Controls: Restrict IT Operations use of powerful Operating System or T24 commands improving T24 security
- Real-time Monitoring: Dynamic web-page dashboard monitor COMOs/phantoms/ services/queues/joblists... and automates interacting with back-end files
- Pre & Post: Automate execution of Pre and Post COB tasks creating the time to add even more steps making T24 workload simpler and less time consuming
- Seamless Integration: Include T24 workload in an integrated enterprise automation framework, connecting all your business applications

How it works

Initiate the COB from Automatic Workload Automation



Initiate the Pre/Post COB from Automatic Workload Automation



Customizable monitoring of COB via Automatic Real-time Dashboards include:

COB.MONITOR of T24

- Execution Progress of T24 stages
- Number of batches in each stage and statuses
- Completion status Percentage bars

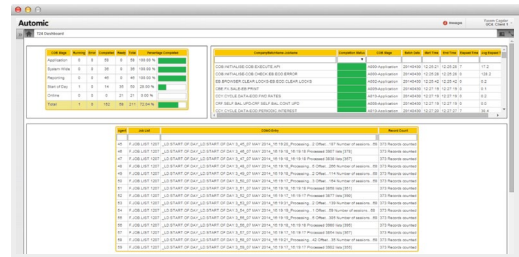
Job Monitor: Individual entry for each Job

- Company and batch information
- Precise COB stage information
- Status of each job (Ready, Running, Completed or Error/Hold)
- Batch date, start time, and end time for each Job
- Average execution time for each Job

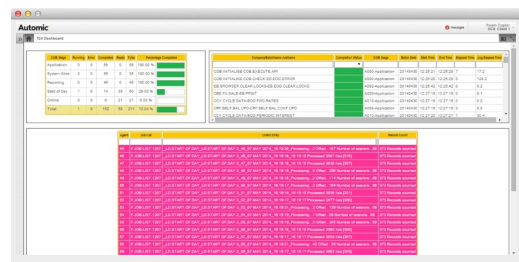
Lock Monitor: Individual entry for each Agent

- Agent Number
- Most recent locking Job List
- Last message from the COMO log
- Number of records from the locking Job

COB Activity Monitoring Dashboard - Overview

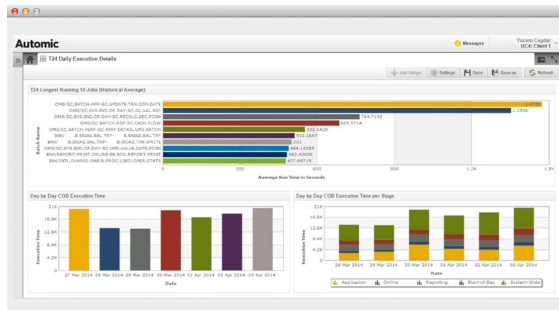


COB Activity Monitoring Dashboard - Errors and Lock Alerts

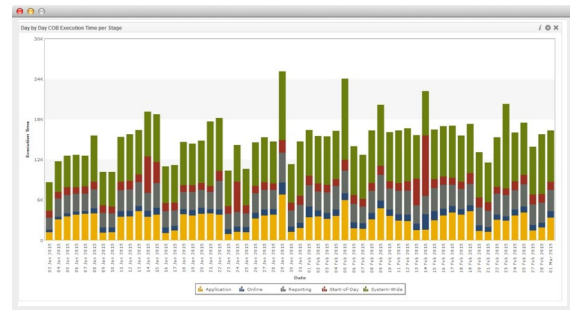


Customizable Automatic COB Reporting Dashboards:

Most Time Consuming Jobs & the Weekly Analysis



Trends & Deviation Analysis of Last 2 Months Execution Duration



For more information or product demonstration please visit www.automic.com