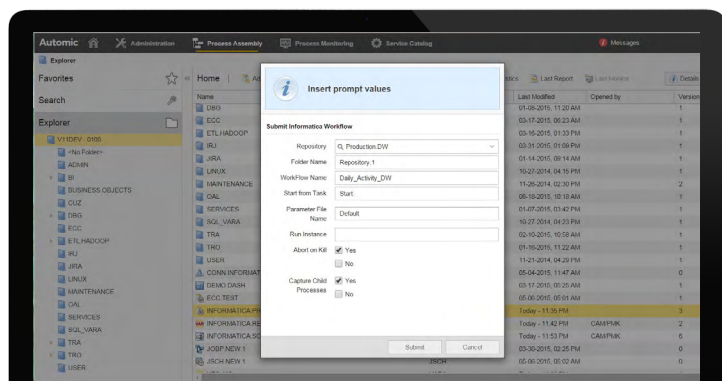


Automic Workload Automation for Informatica



The Challenge

How to distribute the right data at the right time to the right individual

Where you are in the process - has the Extract, Transform, and Load Data (ETL) process run yet?

How to coordinate ETL and Reporting processes

How to coordinate data from different sources (collect data from subsidiaries, different operating systems, legacy systems, different applications, etc.)

How to prevent query overload, accelerate the data loading processes and restart workflows in case of failure

Integrate your ETL into end-to-end process automation

For businesses to make better strategic, tactical, and operational decisions, they need the right information delivered in the right format, at the right time, to the right person. End-to-end automation helps you to accelerate and control data integration and distribution.

The Automic Solution

The best way to standardize and accelerate the refresh of your Data Warehouse and BI Reports is to orchestrate, automate, execute, and control the entire process from end to end. An essential part of this overall process is the ETL process.

Automic Workload Automation for Informatica connects to Informatica Web Services and enables you to automatically execute, control and monitor Informatica Workflows, Tasks, and Sessions with a few clicks. It also allows you to build dependencies to operating system tasks, file transfers, database tasks, web services, and other application tasks.

For example: You can build an automated process that waits until a backup is finished or a file has arrived from a mainframe system, then starts the Informatica workflow. As soon as it is finished, it triggers your Business Intelligence system to refresh the reports with the new data and send out emails to the managers that subscribe to the specific report. Additionally, you can tune how many workflows are executed in parallel to prevent overloading your production systems. In case of exceptions or failures, Automic Workload Automation for Informatica enables you to keep the overview and quickly restart the workflow at the point of failure. Intelligent Automation also prevents business users from constantly querying your data warehouse as they get their reports delivered to the front door when all the new data has arrived.

Key Benefits

With Automic Workload Automation for Informatica you can:

- Run Informatica Workflows, Tasks, and Sessions
- Pick parameters from a list while defining jobs
- Start a workflow from a task
- Manage (abort and stop) tasks
- Recover tasks by running the same task with the Recovery parameter activated
- Restart Workflows, Tasks, and Sessions
- Report status
- Monitor which Automic Workload Automation initiated tasks and sessions are running, which workflows they belong to, and display it
- Register and scan output of the executed Workflows, Sessions, and Tasks

Part of a Unified Business Automation Platform

Automic Workload Automation for Informatica is an application integration component of Automic's platform, an enterprise business automation solution that integrates the management of all critical processes from a single point of control. With Automic's platform, businesses are able to automate both run and build operations in parallel dramatically reducing the cost of ownership and risk typically associated with automated tasks.

For more information or product demonstration please visit www.automic.com