



# DATACOR NEWSBREAKS

The "Chempax Product Features" Resource

## CHEMPAX VB: BARCODING

Barcoding is no longer a technology used only by retailers or large organizations. The cost of implementing barcoding into your operations is now very affordable. It can be used to receive purchase orders, pick and ship orders, record inter and intra warehouse transfers, and take physical inventories. Barcoding improves accuracy and speeds up transactions throughout your operations.

### OVERVIEW

No matter what business you're in, you most likely have inventory – items for sales, raw materials, finished goods, etc. Barcoding is a proven technology that has been effectively used by many industries, including the chemical and process industries, to better manage their inventory. It allows you to capture data faster and more accurately, therefore, saving you more time and preventing costly errors. Additionally, barcoding is a cost effective way to optimize the use of Chempax in your warehouse.



### HOW IT WORKS

- The barcode device connects via RDP to your Chempax Server
- Runs a simplified version of Chempax designed for barcode devices.



## UPCOMING TRADE SHOWS

Meet Datacor Representatives at upcoming industry trade shows.

### February

2 - 4: InformEx 2016

### March

20 - 22: 2016 AFPM - International Petrochemical Conference

20 - 22: PPC Spring Meeting 2016

## SAVE THE DATE

interAXions  
CHEMPAX User Conference

May 11 - 13, 2016  
Wyndham Hamilton Park  
Hotel & Conference Center  
Florham Park, NJ

## WHAT YOU NEED

In order to implement Barcoding into your operations, you will need the following items:

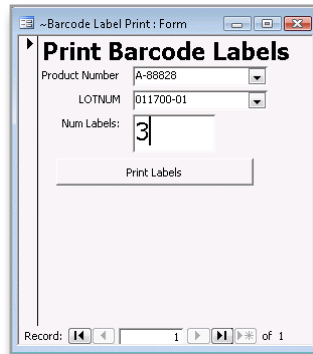
- Barcode Scanner
  - Recommended Scanners: Motorola, Datalogic, Intermetec
- 100% Wireless Coverage in Warehouse (Required)
- Barcode Labels on Products
- Barcode Labels on Locations (Optional)
- Barcode Label Printer

Wifi



## BARCODE LABELS

Barcode labels can be printed from Chempax on demand.



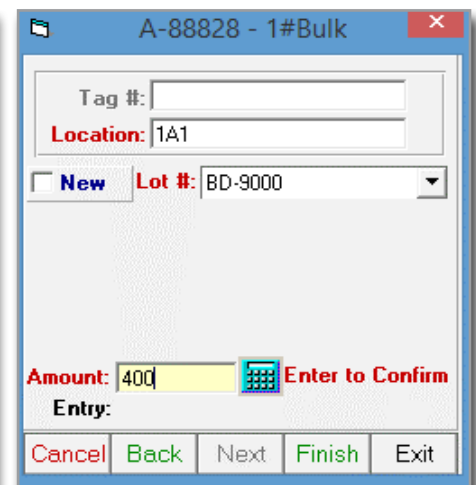
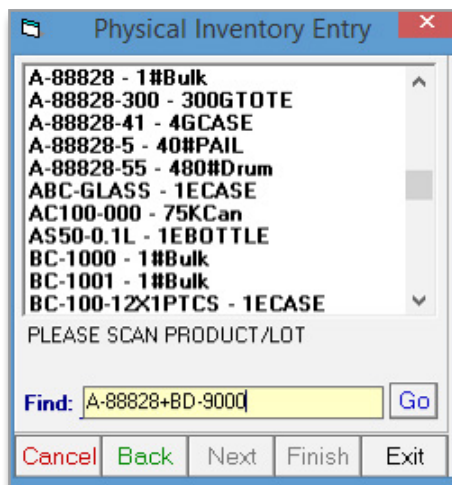
## WHAT'S AVAILABLE IN CHEMPAX

There are various operational areas where barcode scanning is incorporated into Chempax including Physical Inventory, Receiving, Shipping, Location Transfer, and Batch Workflow. The basic process is shown below, but there are many customer options available.

### PHYSICAL INVENTORY (PW3)

Physical inventory is a good place to start utilizing barcoding. The process is shown below:

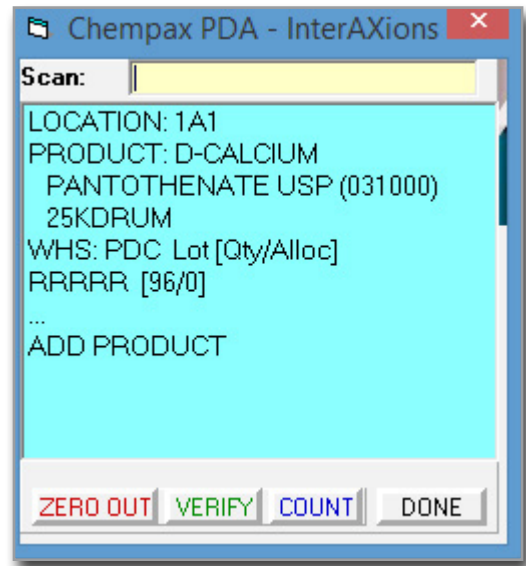
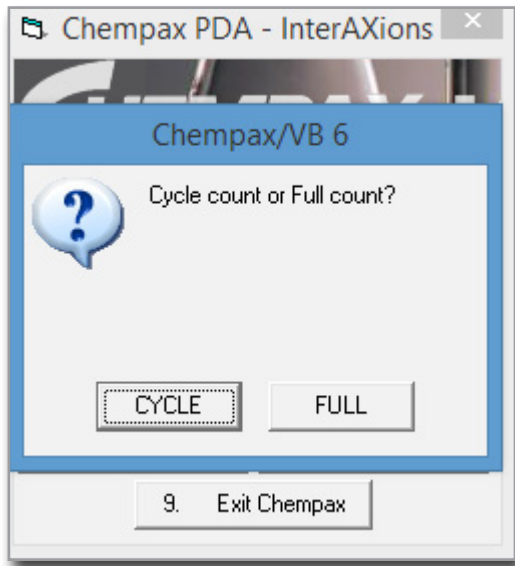
- Scan the Product (+Lot)
- Scan Location (If Applicable)
- Enter Quantity and Confirm





## CYCLE COUNTING OPTION

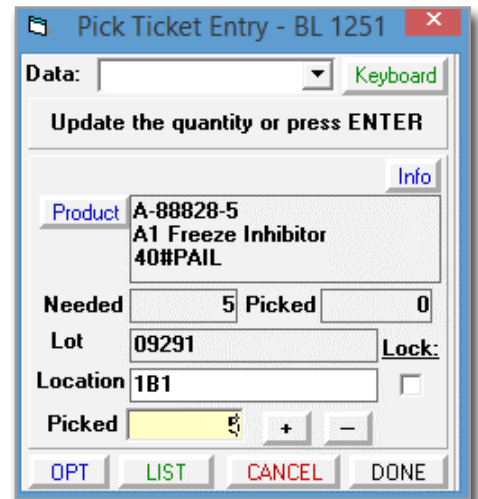
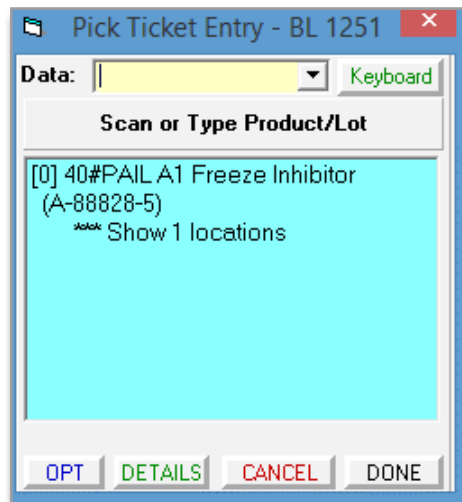
- Location Control required - Counts done by location
- Inventory is updated immediately
- Variance report can be run after-the-fact



## ORDER PICKING (PW 5)

Barcoding will simplify and streamline the Order Picking process for your business. As items are picked, they are automatically moved to a staging location. Therefore allowing for physical separation of actual inventory vs. allocated inventory. The steps to do this are shown below:

- Scan BL # from Pick Ticket or select from dropdown
- Scan the Product (+Lot) from the barcode
- Scan Location (If Applicable)
- Enter Quantity and Confirm
- Custom options available



## PO RECEIVING (PW 6)

Keep your inventory updated as items are received. Simply scan the PO, scan the Product/Lot, and enter the quantity received. Once each receipt is processed the inventory will be available.

Receipt for PO 400083

Data: [ ] Keyboard

Scan first Product and/or Lot

No products entered Info

Product [ ]

Loc: [ ]

Lot [ ] Details

Ordered [ ] Rec'd [ ]

Count [ ] + -

# Labels [ ]

OPT LIST CANCEL DONE

Receipt for PO 400083

Data: [ ] Keyboard

Scan Next Product and/or Lot

250 1EBOTTLE OCD T-1 AS59218 (A&E  
250 items for Lot: IAXtest, Loc:  
1B1

40 1EBOTTLE OCD T-7 12000-T (1200  
40 items for Lot: IAX, Loc: 1B1

OPT DETAILS CANCEL DONE

## LOCATION TRANSFER (PW7)

One of the best reasons to invest in barcode scanners is the ability to immediately transfer inventory between locations within a warehouse.

Location Transfer

Scan: [ ] Keyboard

Update Quantity or Press Enter/DONE

WHS PDC Date

From Loc. 1A1

To Loc. 1B2

Product 031000  
D-CALCIUM  
PANTOTHENATE USP

Lot 25KDRUM RRRRR

Quantity 2 + -

OPT CANCEL DONE

## BATCH WORKFLOW (PW 8)

Barcoding can also be incorporated in the manufacturing process by using Batch Workflow. The process is shown below:

- Scan or select the batch number
- Scan the component Product/Lot from the barcode label
- Enter the quantity consumed
- Optionally, enter the yield amount and labor usage
- Data is pre-loaded into Batch Ticket Receipt (BT 3)

Batch Workflow

Scan: [ ] Keyboard

Press ENTER again to confirm quantity

Batch 195 Info

WHS CCI

Component:

Product 0090-00  
Toluene

Lot 20130101

Location 1C1

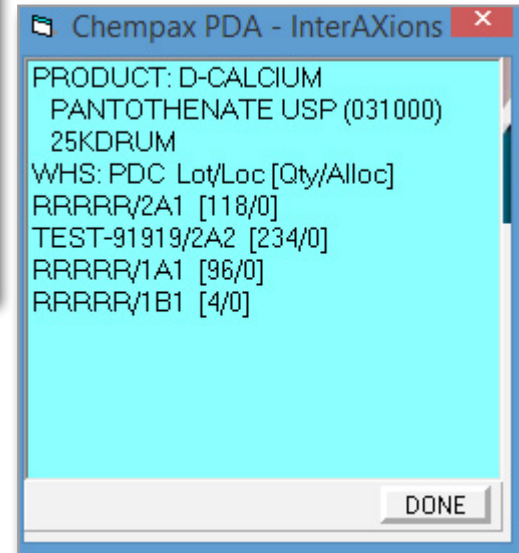
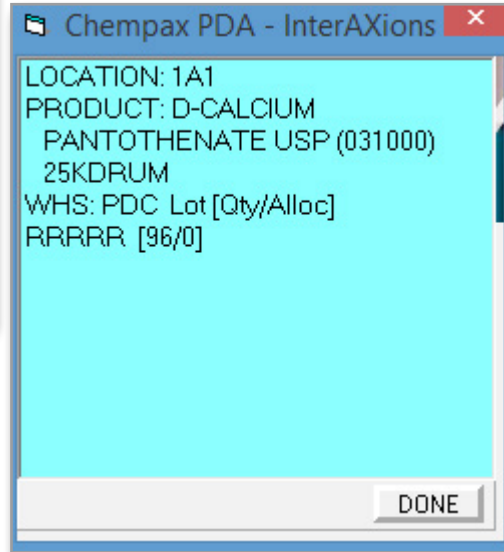
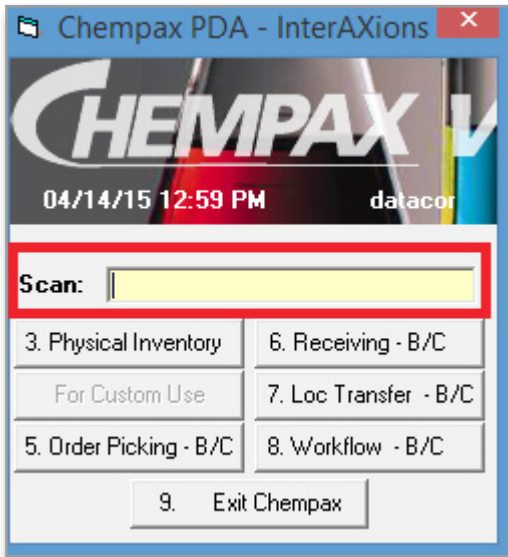
Quantity 100 # G

OPT LIST CANCEL DONE



## STOCK INQUIRIES (PW MENU)

Utilizing barcoding provides users the ability to easily check stock levels by location or product. This can be achieved by scanning or entering a product code or warehouse location in the PW Menu Quick Scan bar.



## HOW TO GET STARTED

If you are interested in incorporating barcoding technology into your business, please contact your primary support representative or e-mail [vbssupport@datacor.com](mailto:vbssupport@datacor.com) before starting the process. We will be able to assist you with all questions or concerns that you may have.

## CONTACT US

**Datacor, Inc.**  
25 Hanover Road, Bldg. B, Ste. 300  
Florham Park, New Jersey 07932  
T: (973) 822-1551 | F: (973) 822-3976  
[marketing@datacor.com](mailto:marketing@datacor.com) | [www.datacor.com](http://www.datacor.com)

## ANY QUESTIONS?

If you have any questions regarding Barcoding in Chempax VB, please contact your primary support representative or e-mail [vbssupport@datacor.com](mailto:vbssupport@datacor.com).

Follow Us:

