

Ekaru

Connecting People With Technology



Technology Workshop Travelling with Technology

June 25, 2015
Lunch & Learn Webinar

Microsoft®
Small Business
Specialist

Microsoft®
CERTIFIED
Partner



Welcome!

- Thank you for joining us today.
- In today's call we will cover security tips for **Travelling with Technology**. The call will last approximately 20 minutes
- If you want to follow from your office, go to www.ekaru.com / Go to "What's New" near the bottom of the page. Presentation will open in a browser, click the down arrow in nav bar to advance slides.

Format

- For call clarity, this is a “listen only” call.
 - (Reason, cut down on ambient noise, avoid “call on hold music” – a bit tough though, because I can’t hear you!)
- If you have questions, please eMail to info@ekaru.com and we will try to include Q&A at the end of the call – we will be reviewing email live during the call or follow up after.
- Call 978-692-4200 for help.

Workshop Mission

- Help you get more from the technology you already have.
- Introduce you to new technologies you need to know about.

Overview – Travelling with Technology

- *How do you stay secure on public networks?*
- *When is it smart to encrypt your portable data and when is it required by law?*
- *What can you do if your laptop, tablet, or smart phone is lost or stolen?*
- *How can you keep your mobile data costs from ballooning when you travel?*
- *What happens when your electronics get too hot?*

Ask Questions: info@ekaru.com

Going Mobile!





Things to think about...

- Security vs. Convenience
- Regulations

Things to think about...

- According to the U.S. Department of Homeland Security, 31% of all cyberattacks are directed at businesses with less than 250 employees

Where is your information?

- Where is your company information?
- What data is entering and leaving your network every day?

Data Losses

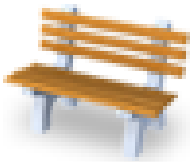
- **Lost /Stolen laptops:**
 - BCBS - 39,000 MA physicians notified of breach at BCBS (estimate 850,000 nationwide!)
 - Coca Cola - said data belonging to 74,000 individuals, including thousands of former and current employees
- **Viruses / Malware**
 - “Ransomware” type attacks up 115% last year
- **Hackers**
- **Device Damage**

Security with public WI-FI

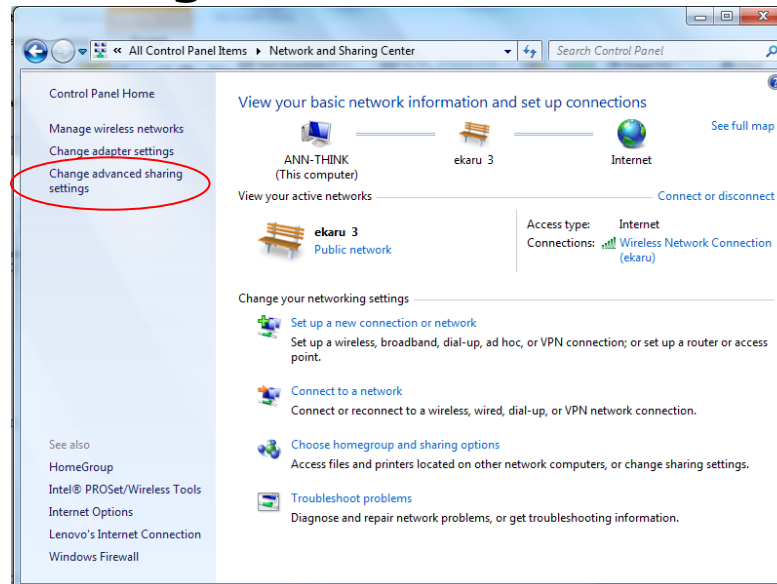
- Router that connects to Internet has a firewall to protect users from outsiders
- BUT, on a local network, you are basically trusting everyone there unless you use precautions.

Set your security to "Public Network"

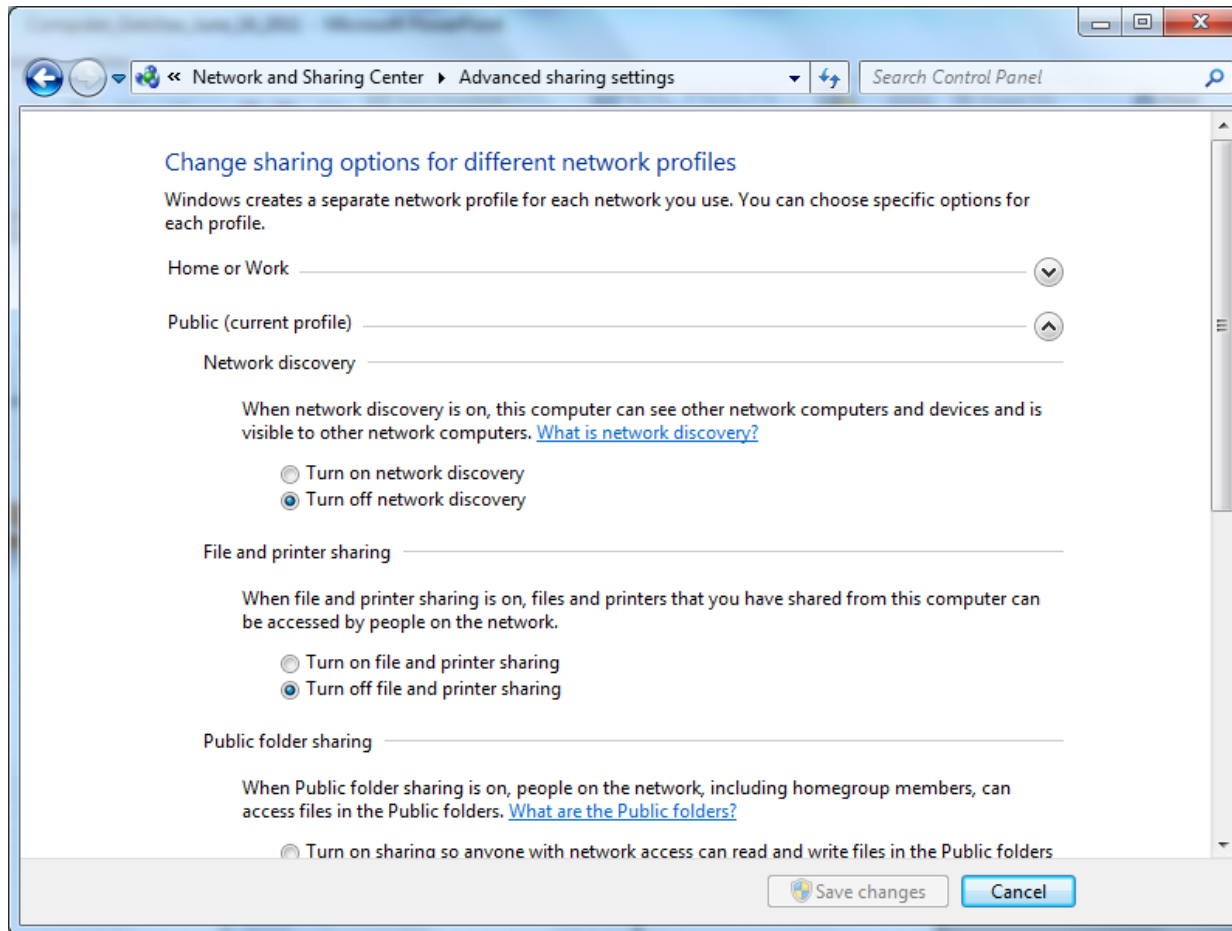
- To see what your current settings are and to change them, go to **Control Panel, Network & Sharing Center**. For a Public Network, the icon is a Park Bench. To see the individual settings, click on "Change Advanced Sharing Settings".



- Home
- Work
- Public



Public Security Settings



Public Security Settings

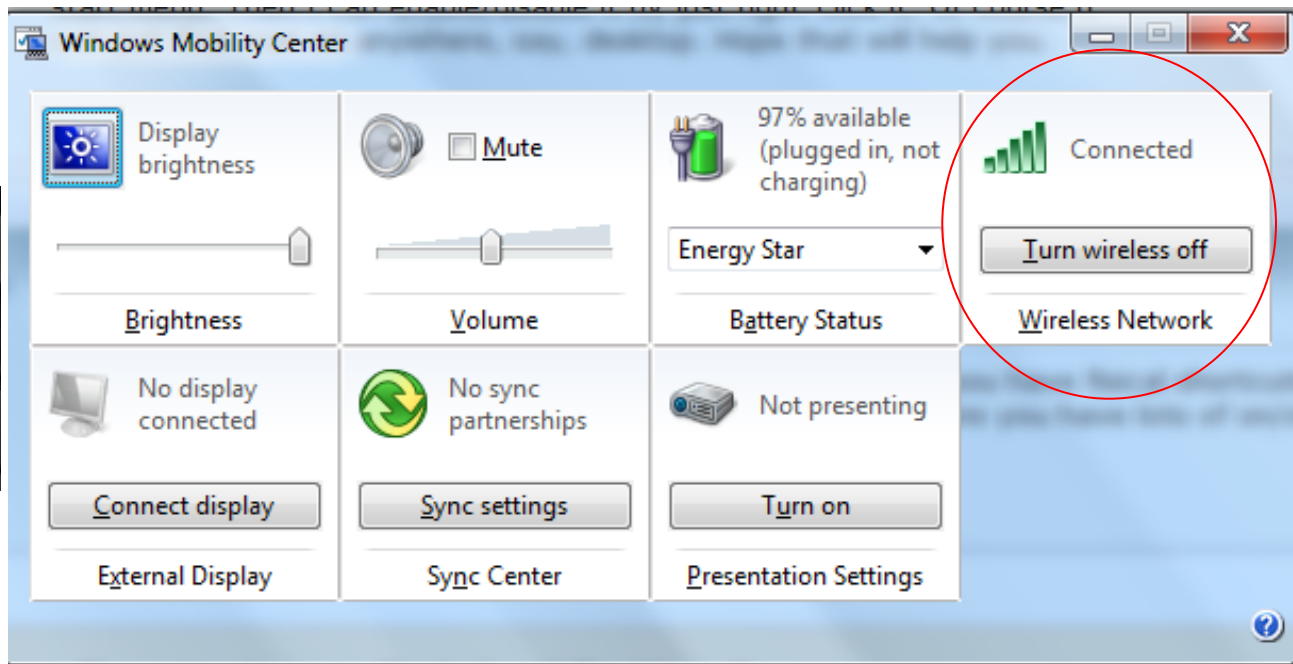
- 1) **Turn OFF Network Discovery** - When Network Discovery is ON, your computer can see other computers and devices on the network and they can see you.
- 2) **Turn OFF File and Printer Sharing** - When File and Printer Sharing is ON, files and printers you have shared on this computer can be accessed by other people on the network.
- 3) **Turn OFF Public Folder Sharing** - When public Folder Sharing is ON, people on the network can access Public Folders.
- 4) **Turn ON Password Protected Sharing** - *if you are going to share files and folders, make sure Password Protected Sharing is ON so that only users with a user name and password for your system could access the files.*
- 5) **Additionally, Turn ON Windows Firewall.** Go to Control Panel, Windows Firewall and check that its ON. The firewall helps prevent other systems on the network (all the people you don't know in the coffee shop) from potentially spreading malicious software or accessing your system.

Additional Options

- Use a **VPN (Virtual Private Network)**
- Web browsing - Use **SSL encryption** Look for "**HTTPS**" in the web address.
- Turn off WIFI

Turn of Wireless if you don't need it!

- Hit "Windows Key" + X – Lots of on/off switches



Overview – Travelling with Technology

- *How do you stay secure on public networks?*
- **When is it smart to encrypt your portable data and when is it required by law?**
- *What can you do if your laptop, tablet, or smart phone is lost or stolen?*
- *How can you keep your mobile data costs from ballooning when you travel?*
- *Temperature Effects*

Ask Questions: info@ekaru.com

Encryption of Portable Devices

- **Required by the MA Data Security Law**: “Encryption of all *personal information** stored on laptops or *other portable devices***;”

* *Personal Information = (First name or initial) + last name + (SSN or Financial Account Number or Drivers License, etc).*

** *If technically feasible*

Encryption of Portable Devices

- Think of all the data that walks out the door of your office each day
- What are employees storing on personal devices?
- What would you do if all your customer contacts were released?
- Encryption of portable devices is a smart idea above and beyond the law.
- Hard Drive Password is better than the Windows password, BUT Password \neq Encryption !!!

Security for Mobile Users

- Get Full Disk Encryption!
 - PGP
 - TrueCrypt (open source)
 - Self Encrypting Drives
- DO NOT FORGET YOUR ENCRYPTION KEY! There is no “back door”!!
- MA Data Protection Law

Overview – Travelling with Technology

- *How do you stay secure on public networks?*
- *When is it smart to encrypt your portable data and when is it required by law?*
- **What can you do if your laptop, tablet, or smart phone is lost or stolen?**
- *How can you keep your mobile data costs from ballooning when you travel?*
- *What happens when your electronics get too hot?*

Ask Questions: info@ekaru.com

What to do – stolen laptop

- Change all your online passwords – banking, credit cards, amazon, etc
- Change your email password
- File a police report
- *Develop a company policy*

You can prepare

- **Before**: Make model, serial number (“service tag” for Dells)
- Full disk encryption
- Make sure your data is backed up!
- LoJack for laptops

Smart phones

- With Exchange, your phone can be deleted and locked remotely.
- With “Pop mail”, plan ahead about how much mail you want to keep on your phone.
- Consider Mobile Device Management (MDM)

Overview – Travelling with Technology

- *How do you stay secure on public networks?*
- *When is it smart to encrypt your portable data and when is it required by law?*
- *What can you do if your laptop, tablet, or smart phone is lost or stolen?*
- ***How can you keep your mobile data costs from ballooning when you travel?***
- *What happens when your electronics get too hot?*

Ask Questions: info@ekaru.com

Travelling – Cell Plans

- Call your provider before you travel to review / temporarily change your plan.

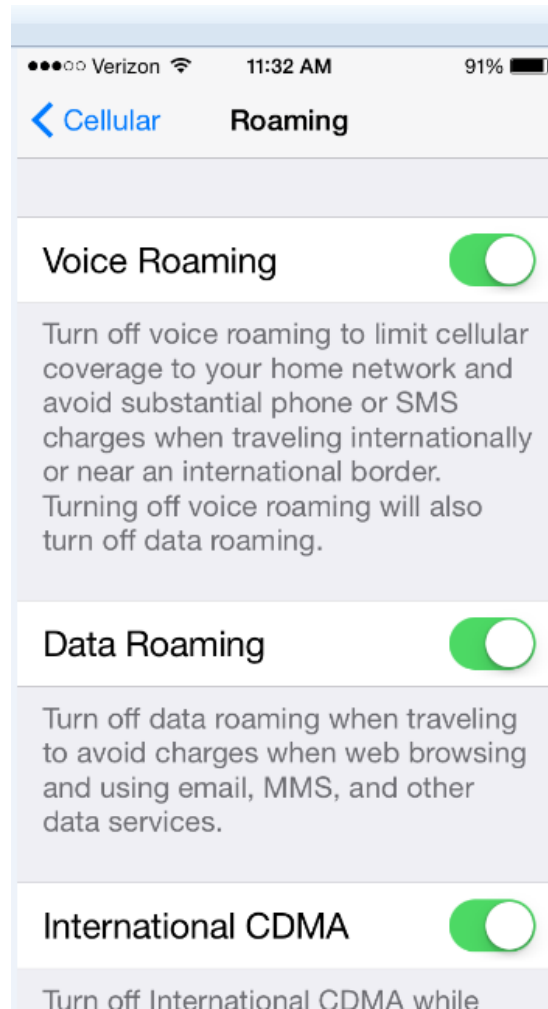
Turn off Data Roaming?

<http://support.apple.com/kb/HT4203>

Turning off Cellular Data does not affect your ability to make or receive phone calls or to use Wi-Fi networks for Internet connectivity, but you will be unable to:

- See the Cellular Data icon in the status bar: , , or .
- Send or receive MMS messages. However, SMS and iMessages can still be sent and received.
- Retrieve or listen to new Visual Voicemail messages. To retrieve these messages, enable Cellular Data.
- Use Personal Hotspot.
- You can adjust this setting from **Settings > General > Network**

iPhone – Shut off data roaming



Get to know your settings.

iPhone Security

- PIN Lock
 - Option to wipe after 10 failed attempts

- “Find my iPhone”

If you misplace your iPhone, iPad, iPod touch, or Mac, the Find My iPhone app will let you use another iOS device to find it and protect your data. Simply install this free app on another iOS device, open it, and sign in with your Apple ID. Find My iPhone will help you locate your missing device on a map, play a sound, display a message, remotely lock

- Keep OS updated





Backup Services –

- May want to pause backup
- What else is synching?

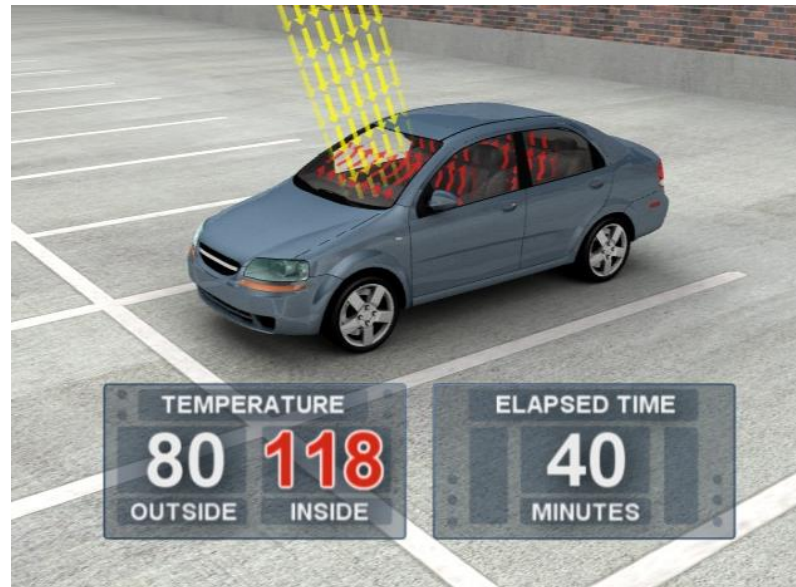
Overview – Travelling with Technology

- *How do you stay secure on public networks?*
- *When is it smart to encrypt your portable data and when is it required by law?*
- *What can you do if your laptop, tablet, or smart phone is lost or stolen?*
- *How can you keep your mobile data costs from ballooning when you travel?*
- ***What happens when your electronics get too hot?***

Ask Questions: info@ekaru.com

Temperature Effects

- On a hot day (80 degrees F), your inside car temperature can go up to 123 - 140 degrees F !



Temperature Effects

- iPhones and iPADS have operating temperature ranges of 32-95 degrees F, and a safe storage range of only up to 113 degrees F.
- Hard drives generally have operating ranges up to 122 degrees F.
- Digital camera specs typically call for storage below 120 degrees F
- Allow electronics to return to room temperature before use.
- Don't leave electronics in the car or in direct sunlight.

Summary

- Careful on public networks
- Encrypt your portable devices
- Protect yourself from theft
- Don't let your mobile data roam
- Find a way to securely access your data

Prepare in advance!

We hope you found at least one suggestion that will make a difference for you!

More Questions?

- We love to hear from you! Send us questions/topics for future blog posts or webinars.
- If there are any questions that didn't get answered today, email us at info@ekaru.com or call us at 978-692-4200.

Ekaru Blog

- Get training every week: www.ekaru.com/blog
- Suggest a topic!



Thank You!:

For more information:

www.ekaru.com



www.twitter.com/EkaruIT



www.ekaru.com/blog



www.facebook.com/ekaru



www.linkedin.com/in/AnnWesterheim

978-692-4200