

SHARP®

ESSENTIALS SERIES COLOR DOCUMENT SYSTEMS



MX-3050N MX-3550N MX-4050N

The Sharp Essentials Series color document systems deliver strong value, enhanced integration, and powerful productivity.

THE NEW BENCHMARK OF INNOVATION

essentials

The Sharp MX-3050N, MX-3550N, and MX-4050N Essentials Series color workgroup document systems offer stunning color output with exceptional ease of use. These new models are designed to provide customers with a seamless, intuitive experience, and the confidence in knowing their jobs will come out right the first time, every time. The new color Essentials Series focuses on value as well as user operability, and draws inspiration from the latest networking and imaging technologies available today, all to create a document system that delivers the productivity you need, with the reliable performance you want.

Key Features

- **Ease of Use** – Sharp's customizable touchscreen display offers a user-friendly graphical interface with a clean design, simplified Easy Modes, and integrated operation guide.
- **Integration** – Available Sharp OSA[®] modules enable easy integration with network applications and cloud services, which can unlock advanced capabilities to help you better manage your workflow.
- **Productivity** – Standard full multifunction capability out-of-box, including copying, PCL[®] 6 network printing and color network scanning, combines with an easy-to-use graphical interface and a 10-second warm up time to offer unmatched value.

The MX-3050N, MX-3550N, and MX-4050N color Essentials Series offer customers powerful multitasking features enabling them to quickly execute the ever-changing workflow tasks of today's busy office environments. And with Sharp's industry-leading security features, you can rest assured that your intellectual property is protected from the first day of operation to the time of trade-in.



DESIGNED TO DELIVER PERFORMANCE AND PRODUCTIVITY



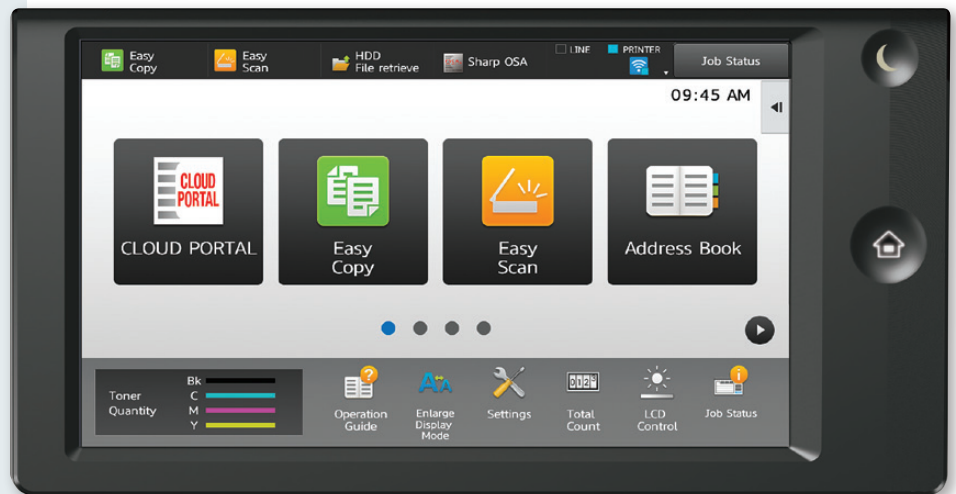
A flexible design plus multifunctional capability allow you to meet tomorrow's document needs today.

- Network-ready **PCL 6** and available **true Adobe® PostScript® 3™** printing systems combined with available **DirectOffice technology** lets you direct print PDFs, select Microsoft Office formats, and more!
- Available **wireless networking** feature can connect directly to your network or to mobile devices for convenient printing and scanning with the **Sharpdesk® Mobile App**.
- Large 10.1" (diagonally measured) **customizable touchscreen display** with a clean design enables easy access to features and functions when setting up jobs.

EASY-TO-USE

ENHANCED INTEGRATION

VERSATILE PRODUCTIVITY



- **Easily access popular cloud applications**, including Microsoft® OneDrive™ for Business, SharePoint® Online, and Google Drive™ with Sharp's available Cloud Connect features.
- **Cloud Portal Office**, an available content management software service from Sharp for storing and sharing scanned documents and other electronic files, helps keep your whole team connected.
- Standard **100-sheet reversing single-pass document feeder** scans documents at speeds up to **80 images per minute (ipm)**.
- Sharp's **Color Consistency System** with next generation image process control delivers high-quality color output and maintains optimum color balance and toner density page after page.
- Available **Compact PDF** feature dramatically reduces the file size of scanned color documents, resulting in decreased network traffic and more efficient use of disk and cloud storage.
- Flexible paper handling system supports media up to **110 lb. cover (300 gsm)** and up to **12" x 18"** through the paper trays, allowing you to print on a wide variety of media.
- **600 x 600 dpi** printing provides clear, crisp images and enhanced clarity for fine details such as small text and graphics.



Provides up to six paper sources with available 550 + 2,100-sheet split tandem paper drawers and 3,000-sheet large capacity cassette.



ENHANCED FUNCTIONALITY – INTUITIVE DESIGN



Easy Copy Screen offers the most commonly used settings.



Standard Copy Screen offers more advanced features.



Available wireless network interface for convenient scanning and printing from mobile devices.

From paper handling to networking, the MX-3050N, MX-3550N, and MX-4050N color Essentials Series will exceed your expectations.

Simple and Intuitive Operation

From the most basic of copy functions, to the most complex scan jobs, the color Essentials Series will perform them with ease and efficiency. Use one of the **Easy Modes** for fast, simple operation, with basic functions displayed in **large, clearly-labeled tiles** and keys. And for more advanced features, just touch the “Details” button—it’s that easy.

A “Well-connected” Device

Connecting a multifunction printer (MFP) to your wireless network and accessing it from mobile devices has never been so easy with the color Essentials Series’ available wireless networking features. Print from or scan to popular cloud services such as **Microsoft OneDrive for Business**, **SharePoint Online**, and **Google Drive** with Sharp’s **Cloud Connect** features.* **Single Sign-on (SSO)** support for accessing these services makes scan-to-folder and scan-to-email operations simpler than ever. Even printing from your desktop is made easier with Sharp’s standard **serverless Print Release** function. **Easily send a job to one device, and print it on another** where it’s most convenient for you.

The Productivity You Need, the Performance You Want

When it’s time to get the job done, the Essentials Series color document systems are outstanding performers. Quickly scan documents at speeds up to **80 images per minute**. Then use the **manual stapling feature** on select finishers to restaple your originals. **Multiple finishing options** give you the output you require, be it stacked, stapled, or saddle-stitched. There’s even an available built-in **stapleless staple** feature, which can bind up to five sheets of paper by adding a crimp to the corner of the set, saving regular staples for larger sets.



MX-4050N shown with compact inner finisher.



MX-4050N shown with 3K saddle stitch finisher and large capacity cassette.

*Some features require optional equipment.

HIGH IMPACT VERSATILITY AND SCALABILITY

The MX-3050N/3550N/4050N Essentials Series color document systems provide high-performance functionality adaptable to your business needs.

innovative features

Reversing Single Pass Feeder (RSPF)

Standard 100-sheet reversing document feeder scans up to 80 ppm.

Advanced Network Scanning

Sharp's ImageSEND™ feature provides one-touch distribution to email, network folders, cloud applications and more.

Easy-to-Use Smart Touchscreen

Tablet-style menu provides quick access to features and functions.

High Quality Printing

600 x 600 dpi resolution produces razor-sharp documents. Available true Adobe® PostScript® 3™ drivers offer extensive job control.

In-line Stapling

Produce professional-looking corner-staple or edge-staple documents up to 65 pages.

On-board Document Storage

Sharp's easy-to-use Document Filing System enables users to store frequently used files.

Manual Stapler

Manual stapling feature makes it easy to re-staple originals after scanning.

Enhanced Security Features

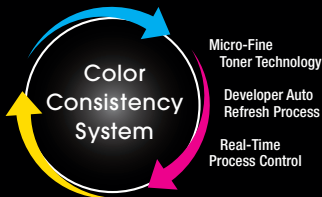
256-bit data encryption with up to 10-times data overwrite, as well as Sharp's convenient End-of-Lease feature.

Saddle Stitch Finishers

Make high quality booklets up to 80 pages.

Large Capacity Cassette

Large capacity cassette option adds an additional 3,000 sheets of paper for a total on-line capacity of up to 6,300 sheets.



Sharp's Color Consistency System combines Micro-fine Toner with Developer Refresh and advanced Image Process Control. These processes help ensure color output is always at peak performance.

Advanced Finishing

Sharp gives you a choice of five high-performance finishers to give your documents a professional look. Choose from a compact inner finisher to a high capacity, floor-standing saddle stitch finisher.

Flexible Paper Handling

Paper drawers feed up to 12" x 18" and support media up to 300 gsm. 550-sheet capacity makes it easy to reload a full ream of paper. A high capacity split tandem drawer is also available.

ENHANCED COLLABORATION FOR STREAMLINED WORKFLOWS



Direct print to popular file formats seamlessly with Sharp's available direct print expansion kit.¹



Distribute, access and print documents more easily.



With serverless Print Release technology you can securely print a job and release it from any of five color Essentials Series models.

Powerful document workflow solutions help you work more efficiently.

Simplify Printing Your Files with Direct Printing

With the available Direct Print Expansion Kit, you can print popular file formats including **Microsoft Word, PowerPoint, and Excel**, as well as a variety of PDF formats from thumb drives, cloud applications, and mobile devices.¹ This function is enabled via **DirectOffice™** technology. With this much flexibility, you can speed through your workflow tasks faster than ever!

Distribute, Access and Print Your Documents with Ease

Sharp makes it easy to send documents to the destinations you need and goes beyond traditional network scanning with standard **Cloud Connect** features. Easily **scan documents** to **Microsoft OneDrive for Business, SharePoint Online, and Google Drive** without additional middleware. You can also print from these cloud applications. With **Single Sign-On** capability, accessing them is virtually seamless! Sharp also makes it easy to **collaborate and share documents** with available **Cloud Portal Office** document storage and sharing service. Capture, index, and archive your documents easily and securely.

Scan and Print Files Easily from Mobile Devices

The Essentials Series color document systems also make it easy to scan and print files from tablets and smart phones using **Sharpdesk® Mobile**, a free downloadable app available for most common mobile devices.² The color Essentials Series also supports popular mobile technologies such as **Mopria™, Android™ printing framework** and **Google Cloud Print™**.³ You can print locally from your device or download files from supported cloud applications. Since the color Essentials Series can connect to mobile devices through a **point-to-point wireless connection**, there is no interference with your corporate network!¹

Flexible Printing Solutions Help Speed Up Your Office Productivity

The color Essentials Series offer standard **PCL® 6** and optional **true Adobe® PostScript® 3™** printing systems to help you speed through all of your output needs with accuracy. To help streamline your jobs, these powerful performers include **serverless Print Release technology**, enabling you to securely print a job and release it from up to five color Essentials Series models on your network. And with Google Cloud Print web printing service, you can print from Chromebook™ notebook computers, PCs and more from virtually anywhere.

Simplify Complex Business Workflows

Sharp OSA® technology can help your business leverage the power of your network applications, back-end systems and cloud services.¹ Easily automate complex processes and help eliminate redundant tasks. Create your own custom integrations or take advantage of the growing portfolio of Sharp OSA applications available from Sharp Partner Program members.



¹ Some features require optional equipment and/or software/services.

² Go to www.sharpsusa.com for a list of supported devices and operating systems.

³ Available early 2016.

TAKING CARE OF BUSINESS SAFELY AND SECURELY

Manage your device, help safeguard your data, help protect your business.

Businesses require that the devices on their networks are properly managed and closely monitored to ensure their data remains uncompromised. To help achieve this, the MX-3050N/3550N/4050N Essentials Series offer powerful device management utilities, web-based customer training, and advanced, **multi-layered security features**.

With the **Sharp Remote Device Manager (SRDM)***, administrators can take control of system features and simplify installation and management. SRDM makes it easy to view service logs, click counts, history reports and more. Its event-driven service alerts help you monitor the device and maximize uptime. The **Remote Front Panel** feature allows administrators to view and control the machine's LCD panel from a PC to troubleshoot issues and train operators remotely. Sharp also offers both **built-in** and additional **auditing hardware and software to control, access, and track usage** of each device on the network.* And with **My Sharp™**, you get a dedicated training website customized to your model and configuration to help you understand and utilize all of the advanced features of your Sharp product, including those for security.



To help protect employees' privacy and intellectual property, the color Essentials Series is armed with a variety of security measures, including features such as **data encryption, data overwrite protection, and data erase**. Multiple **security protocols** help restrict access to the device while in operation, and a convenient **End-of-Lease** feature overwrites all data at time of trade-in. **Authority Groups** help manage and restrict specific copying, printing, scanning, and fax features to safeguard data and control costs. The **Admin Audit Log** feature allows IT administrators to track activity on the device. **Confidential Printing** and **Secure Fax Release** help ensure that sensitive documents are kept safe by requiring users to enter a PIN code in order to print them.



These scalable security offerings aim to **protect your intellectual property**, preserve confidential information and help your business meet regulatory requirements including the Health Insurance Portability and Accountability Act (HIPAA) and the Family Educational Rights and Privacy Act (FERPA). For additional information visit: www.sharppusa.com/security.

**Some features require optional equipment and/or software.*



ENVIRONMENTAL COMMITMENT



An Environmentally Responsible Approach to Product Design

Sharp is committed to environmental sustainability and corporate responsibility including planning, design, manufacturing, distribution and product end-of-life management. Sharp adheres to Green Products Guidelines in pursuit of these commitments. These guidelines include designing products that consume less power, using recycled materials, reducing the amount of material used in products and packaging, and labeling the type of materials used. Sharp also aims to design products that are upgradable, easy to repair, and easy to take apart for recycling.

The MX-3050N/3550N/4050N document systems are ENERGY STAR® qualified and RoHS compliant to restrict the use of hazardous substances. These products also have the lowest TEC value among competitive models, at time of this printing. Sharp MFPs are EPEAT® registered.



Toner Recycling Program

As part of our commitment to helping preserve the environment, Sharp offers our customers zero-waste-to-landfill recycling for Sharp consumables, including cartridges, bottles, toner collection containers and drum units. Sharp encourages customers to recycle their used Sharp toner cartridges in bulk by providing a pre-paid recycling kit for their return to our facility.

Environmental Leadership

As a testament to our commitment to the environment, Sharp is a multi-year winner of the ENERGY STAR annual Excellence in Energy Proficiency Product Design. Sharp is also a multi-year winner of the SmartWay® Excellence Award which recognizes companies for conserving energy and lowering greenhouse gas emissions in logistics and transportation.

For more information about Sharp's environmental leadership including information about energy efficient products, electronics or toner cartridge recycling, please visit www.sharppusa.com/environment.

MX-3050N/3550N/4050N SPECIFICATIONS

Main Specifications

| | | | |
|--------------------------------|---|-----------------|-----------------|
| MX-3050N/3550N/4050N | Base models include multitasking controller, 100-sheet RSPF and PCL 6 printing system, network scanning, auto duplexing, 1 x 550-sheet paper drawer, 100-sheet bypass tray. Black and color developer is included. | | |
| Type | Color multi-function digital document system | | |
| Display | 10.1" (diagonally measured) color dot matrix high-resolution touch panel tilting display. 1024 x 600 dots (W-SVGA) | | |
| Functions | Copy, print, network print, network scan, document filing and fax ¹ | | |
| Copy System | Dry electrostatic transfer/Dual component developer/Magnetic brush development/OPC drums/Belt fusing/white LED exposure | | |
| Originals | Sheets and bound documents | | |
| Max. Original Size | 11" x 17" | | |
| Copy Size | Min. 5½" x 8½", Max. 11" x 17" + 12" x 18" | | |
| Copy Speed | 30/35/40 ppm B&W/Color (8½" x 11") | | |
| Multiple Copy | Max. 9,999 copies | | |
| First Copy Time | MX-3050N | MX-3550N | MX-4050N |
| Seconds² | Platen Glass | Mono 4.7 | Mono 4.7 |
| | | Color 6.7 | Color 6.7 |
| | RSPF | Mono 7.6 | Mono 7.6 |
| | Color 9.7 | Color 9.7 | Color 9.7 |
| Warm Up Time | 10 seconds or less | | |
| Magnification | 25% to 400% in 1% increments (with document feeder 25%-200%) | | |
| Original Feed | 100-sheet RSPF with original size detection. | | |
| Scan Speed | Copy: Up to 80 ipm (B&W)/41 ipm (Color) Scan: Up to 80 ipm (B&W/Color) | | |
| Original Sizes | 5½" x 8½", 8½" x 11", 8½" x 11" R, 8½" x 14", 11" x 17" | | |
| Paper Capacity | Standard: 650 Sheets/Maximum: 6,300 Sheets | | |
| Paper Feed System | Standard: (1) 550-sheet paper drawer (letter/legal/ledger/statement size) and 100-sheet bypass tray (letter/legal/ledger/statement/envelope size). Optional: Single, double, or triple drawer paper deck (550, 1,100, or 1,650 sheets), split tandem paper drawer (2,100 sheets letter only) plus (1) 550-sheet paper drawer (letter/legal/ledger/statement size). | | |
| Paper Weights and Types | Paper drawers: 18 lb. bond to 110 lb. cover. Split Tandem Tray: 18 lb. bond to 28 lb. bond. Other paper types include plain, pre-printed, recycled, pre-punched, letterhead and color paper. Bypass tray: 16-28 lb. bond (plain paper), 13-16 lb. bond (thin paper), 28 lb. bond-110 lb. cover (heavy paper), 20-24 lb. bond (Monarch/Com-10 envelope), tab paper (letter). Also label paper, gloss paper, pre-printed, recycled, pre-punched, letterhead, color paper and OHP film. | | |
| Duplexing | Standard automatic duplex copying and printing | | |
| CPU | Up to 1.75 GHz multi-processor design | | |
| Interface | RJ-45 Ethernet (10/100/1000 Base-T), USB 2.0: 2 host ports (front and rear), 1 device port (rear) | | |
| Memory | Standard 5 GB copy/print (shared)/Hard Disk Drive: 250 GB | | |
| Hard Disk Drive | 250 GB | | |
| Copy Resolution | Scan: 600 x 600 dpi (B&W/Color) Copy Output: Up to 600 x 600 dpi | | |
| Color Modes | Auto Color Selection (ACS), Full Color Mode, Monochrome (B/W) | | |
| Exposure Control | Modes: Automatic, Text, Text/Photo, Text/Printed-Photo, Printed-Photo, Photo, Map, Pale-Color Document. Settings: Auto or 9 step manual | | |
| Halftone | 256 gradations/2 levels (monochrome) | | |
| Copy Features | Scan-Once Print-Many, electronic sorting, offset-stacking, Auto Color Selection (ACS), Auto Paper Selection (APS), Auto Magnification Selection (AMS), Auto Tray Switching (ATS), black-white reversal, blank page skip, book copy, book divide, card shot, center erase, centering, cover pages, dual page copy, edge erase, image edit, image preview, insert pages, job build, job programs, margin shift, mirror image, mixed size original, multi-page enlargement, original count, pamphlet style, proof copy, repeat layout, reserve copy, rotated copy, stamp, stamp custom image, suppress background, tab copy, tab-paper insertion, tandem copy, toner save mode, transparency inserts, watermark, 2-in-1 / 4-in-1 / 8-in-1 multi shot | | |
| Account Control | Up to 1,000 users. Supports user-number authentication, login name/password or login name/LDAP password | | |
| Output Tray Capacity | Center Exit Tray (Main): 250 sheets (face down) Job Separator (Upper Tray): 100 sheets (face down) Right Side Exit Tray: 100 sheets (face down) | | |

Main Specifications (continued)

| | |
|--------------------------------|--|
| Firmware | Flash ROM with local (USB), network update capability and firmware update 1 to N with SRDM (Sharp Remote Device Manager) |
| Device Setup | Web-based management/cloning with user/administrator level login |
| Service/Functions | Remote Front Panel, remote access to service logs and click counts |
| Accessibility Features | Free stop tilting front panel, adjustment of key touch sound and speed, concave key, document feeder free stop, job programs, remote front panel, universal grip for paper trays, and disable screen timeout |
| Environmental Standards | International Energy Star Program Ver. 2.0, European RoHS, Blue Angel (RAL-UZ171) |
| Power | AC 110-127 VAC, 60 HZ, 12 Amps |
| Power Consumption | 1.44 kW or less |
| Weight | Approx. 173 lbs. |
| Dimensions | Approx. 24" (w) x 26" (d) 33" (h) |

Network Printing System

| | |
|----------------------|---|
| PDL | Standard PCL [®] compatible 6, optional Adobe [®] PostScript [®] 3 [™] |
| Resolution | 600 x 600 dpi |
| Print Speed | 30/35/40 pages per minute (8½" x 11") |
| Print Drivers | Windows Server [®] 2008, Windows Server 2008 x64, Windows Vista [®] , Windows Vista x64, Windows 7, Windows 7 x64, Windows 8.1, Windows 8.1 x64, Windows Server 2012 x64, Windows 10, Windows PPD, MAC OS [®] (including 10.4 to 10.11), all MAC PPD |

Features

Auto configuration, serverless print release, bar code font printing, carbon copy print, chapter inserts, color adjustment settings, color mode, confidential print, continuous printing, custom image registration, different cover page/last page/other page, document control, document filing, duplex printing, electronic sorting, folding, form overlay, hidden pattern print, image rotation, image stamp, image type, job bypass print, job retention, layout print, margin shift, multiple pamphlet, network tandem print, N-up printing, offset stacking, page interleave, pamphlet style, poster print, proof print, print and send, punching, stapling, tab paper print, tab printing, toner save mode, transparency inserts, tray status, user authentication, watermarks, zoom print

Resident Fonts

80 outline fonts (PCL), 139 fonts (PS)

Interface

RJ-45 Ethernet 10/100/1000 Base-T, USB 2.0, Wireless

Operating Systems

Windows Vista, Windows Server 2008, Windows Systems 7, Windows 8, Mac OS X10.4-10.11, Novell[®] NetWare[®], UNIX[®], Linux[®] and Citrix[®] (XenApp 5.0, 6.0, 6.5, 7.5, 7.6) and Windows Terminal Services, SAP device types¹

Network Protocols

TCP/IP (IPv4, IPv6, IPSEC) SSL (HTTP, IPP, FTP), SNMPv3, SMTP, POP3, LDAP, 802.1x for Windows and Unix. LPD and LPR for Unix. AppleTalk[®] for Macintosh[®] environments.¹

Printing Protocols

LPR, IPP, IPPS, PAP, Raw TCP (port 9100), FTP, POP3, HTTP, and Novell Pserver/Rprinter

Network Security

IP/MAC address filtering, protocol filtering, port management, user authentication and document administration¹

Security Standards

IEEE-2600[™]-2008, DoD (NSTISSP) #11

Network Scanning System

| | |
|-------------------------------|---|
| Scan Modes | Standard: Color, monochrome, grayscale |
| Max. Original Size | 11" x 17" |
| Optical Resolution | 600 dpi |
| Output Modes | 600 dpi, 400 dpi, 300 dpi, 200 dpi, 150 dpi, 100 dpi |
| Image Compression | Monochrome Scanning: Uncompressed, G3 (MH), G4 (MR/MMR) Color/Grayscale: JPEG (high, middle, low) Internet Fax mode: MH/MMR (option) ¹ |
| Image Formats | Monochrome: TIFF, PDF, PDF/A, Encrypted PDF, and XPS Color/Grayscale: TIFF, JPEG, PDF, PDF/A, Compact PDF, Encrypted PDF, and XPS. Internet Fax: TIFF-FX, TIFF-F, and TIFF-S ¹ |
| Scan Destinations | Email, Desktop, FTP, Folder (SMB), USB, Internet fax (option), Super G3 fax (option) |
| One-touch Destinations | Up to 2,000 (combined scan destinations) |
| Group Destinations | Up to 500 |
| Programs | 48 (combined) |

Network Scanning System (continued)

| | |
|--------------------------|---|
| Max. Jobs | Up to 100 |
| Network Protocols | TCP/IP and SSL (includes HTTP, SMTP, LDAP, FTP, POP3), SMB, ESMTMP and 802.1x |
| Network Security | Email server user authentication for LDAP and Active Directory |
| Software | Sharpdesk [®] desktop personal document management software (1 user license included), Sharpdesk Mobile (download) |

Direct Print Expansion Kit (Option)

| | |
|-------------------|---|
| File Types | TIFF, JPEG, PCL, PRN, TXT, PNG, DOCX, XLSX, and PPTX |
| Methods | Optional: PDF, Compact PDF, Encrypted PDF, and PostScript FTP, SMB, Web page, Email and USB memory |

Optional Equipment

| | |
|-----------------|--|
| MX-60ABD | Deluxe Copier Cabinet Base (with front door) |
| MX-DE25 | Stand/1 x 550-sheet Paper Drawer |
| MX-DE26 | Stand/2 x 550-sheet Paper Drawers |
| MX-DE27 | Stand/3 x 550-sheet Paper Drawers |
| MX-DE28 | Stand/1 x 550 + 2,100-sheet Split Tandem Paper Drawers |
| MX-LC17 | 3,000-sheet Large Capacity Cassette (letter, requires MX-DE25/26/27/28) ⁵ |
| MX-LT10 | Long Paper Feeding Tray |
| MX-FN27 | 50-sheet Staple Inner Finisher |
| MX-FN28 | 1K Stacking 50-sheet Staple Finisher |
| MX-FN29 | 1K Stacking 50-sheet Staple/Saddle Stitch Finisher |
| MX-FN30 | 3K Stacking 65-sheet Staple Finisher ⁵ |
| MX-FN31 | 3K Stacking 65-sheet Staple/Saddle Stitch Finisher ⁵ |
| MX-RB25 | Paper Pass Unit (required for MX-FN28/29/30/31) |
| MX-PN14B | 3-Hole Punch Unit (requires MX-FN27) |
| MX-PN15B | 3-Hole Punch Unit (requires MX-FN28/29) |
| MX-PN16B | 3-Hole Punch Unit (requires MX-FN30/31) ⁵ |
| MX-SCX1 | Staple Cartridge for MX-FN27/28/29 |
| AR-SC2 | Saddle-stitch Staple Cartridge for MX-FN29 |
| MX-SC11 | Staple Cartridge for MX-FN30/31 |
| MX-SC12 | Saddle-stitch Staple Cartridge for MX-FN31 |
| MX-TR19 | Right Side Exit Tray |
| MX-TR20 | Job Separator Tray |
| MX-TU16 | Center Exit Tray |
| MX-EB11 | Compact PDF Kit |
| MX-EB18 | Wireless LAN |
| MX-FX15 | Fax Expansion Kit |
| MX-FWX1 | Internet Fax Kit |
| MX-PF10 | Bar Code Font Kit |
| MX-PK13 | Adobe [®] PostScript [®] 3 [™] Expansion Kit |
| MX-PU10 | Direct Print Expansion Kit |
| AR-SU1 | Stamp Unit (requires AR-SV1 Stamp Cartridge) |
| AR-SV1 | Stamp Cartridge |
| MX-AMX1 | Application Integration Module |
| MX-AMX2 | Application Communication Module |
| MX-AMX3 | External Accounting Module |
| MX-FR51U | Commercial Data Security Kit (not available at time of launch) |
| DVENDFS | Generic Vendor Interface Kit |

Supplies

| | |
|------------------|-------------------------------|
| MX-60NTBA | Black Toner Cartridge |
| MX-60NTCA | Cyan Toner Cartridge |
| MX-60NTMA | Magenta Toner Cartridge |
| MX-60NTYA | Yellow Toner Cartridge |
| MX-60NVBA | Black Developer |
| MX-60NVSA | Cyan/Magenta/Yellow Developer |
| MX-60NRSA | Drum |
| MX-607HB | Toner Collection Container |

¹ Some features require optional equipment. See your local dealer.

² May vary depending on product configuration, machine settings and operating and/or environmental conditions.

³ Actual transmission time will vary based on line conditions.

⁴ Based on Sharp Standard Test Chart with approximately 700 characters, letter size in standard resolution.

⁵ Available early 2016.



SHARP ELECTRONICS CORPORATION
1 Sharp Plaza, Suite 1
Mahwah, NJ 07495-1123
1-800-BE-SHARP • www.sharpsusa.com

Design and specifications subject to change without notice. Sharp, Sharp OSA, Sharpdesk, My Sharp, and all related trademarks are trademarks or registered trademarks of Sharp Corporation and/or its affiliated companies. Windows, Windows Server, Excel, PowerPoint, OneDrive, and SharePoint are trademarks or registered trademarks of Microsoft Corporation. Android, Google Drive, Google Cloud Print, and Chromebook are trademarks or registered trademarks of Google, Inc. Mopria is a trademark of the Mopria Alliance. Adobe, PostScript 3 are trademarks or registered trademarks of Adobe Systems Inc. DirectOffice is a trademark of CSR Imaging US, LP, registered in the United States and other countries, used with permission. All other trademarks are the property of their respective owners.