

AIP Applications Overview

March 2015

Content

- **What are AIP applications?**
- **What's New?**
- **AIP Applications Key Features**
 - My Folder Connector
 - E-mail Connector
 - Portal Connector
 - MX-SW100 Print Release Software
- **Reference**
 - AIP Program (What it is and How to Enroll)
- **Appendix**
 - Supported Models
 - System Requirements

Why AIP Applications?

Customer's Challenge:

IT department wants structured document sending and printing solutions in their Microsoft® environment:

- ▶ Send files to trusted network folders, like home folders, or Active Directory® secured folders
- ▶ Add scan to e-mail security integrating with Microsoft® Exchange
- ▶ Send and print files to/from Microsoft® SharePoint®
- ▶ Release print jobs from any connected MFPs and printers with control

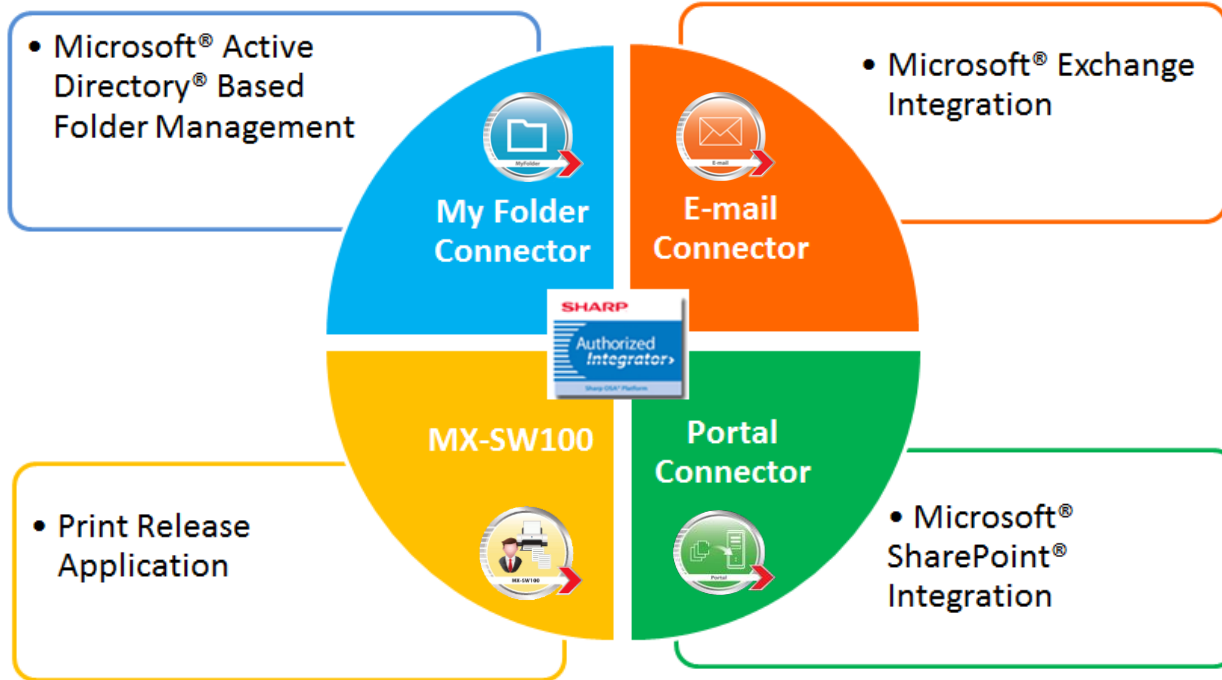


AIP Applications Can Help:

AIP applications are designed around the popular Microsoft environment. Centrally managed, AIP applications provide IT departments and end customers with secure, integrated and productive document scanning and printing experience for their existing IT infrastructure.

AIP Applications

Centrally managed, AIP applications to extend Sharp MFP product capabilities.



AIP Applications Positioning

Requirements

Complex

Simple

Other Market Apps

Sharp Partner
Program Member Apps

AIP Applications

MFP Device Features

Small

Mid

Enterprise/Global

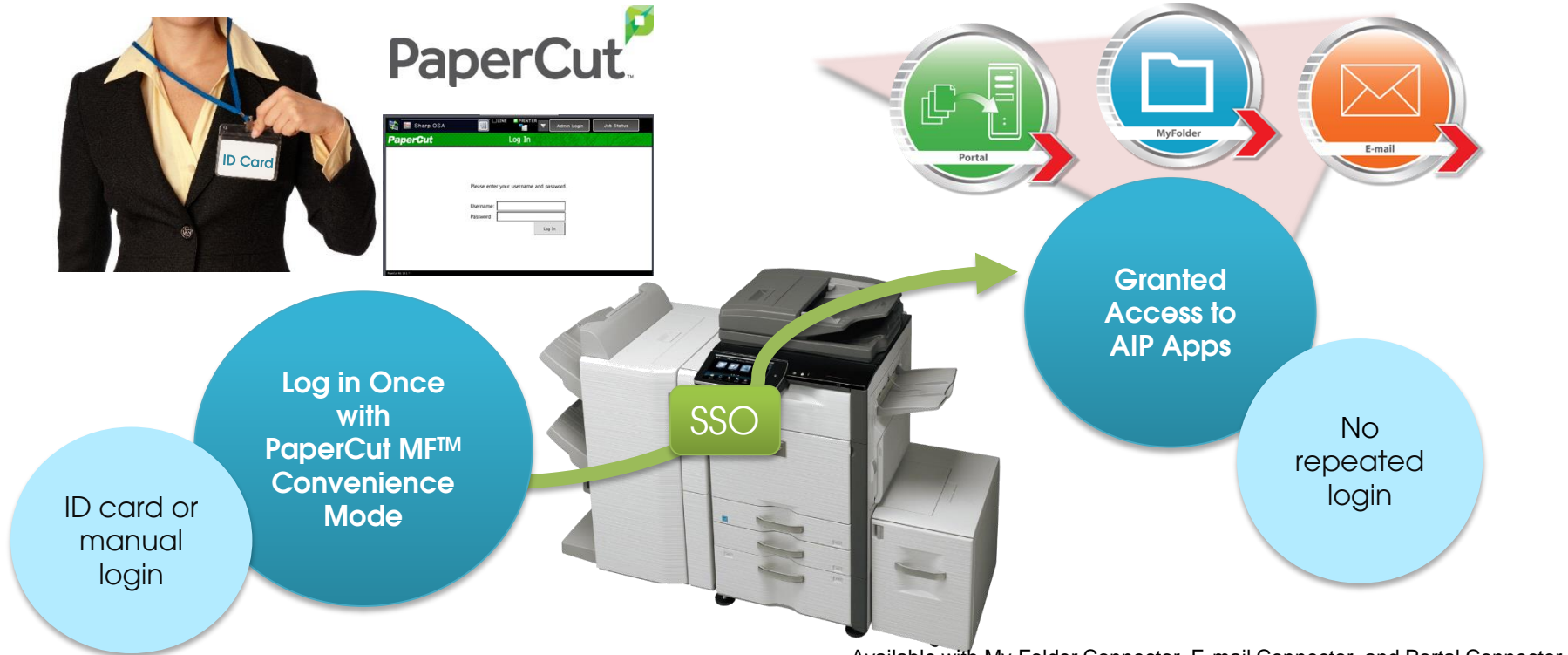
Size
Of
Organization

What's New?

- Single-Sign-On with PaperCut MF™ for greater convenience and improved user experience
- Microsoft® SQL Server® Express and SQL Server® with improved scalability and stability
- Windows® 8.1, Windows Server® 2012 and 2012 R2 support
- Added Sharp MFP model support* including MX-M654N and MX-M754N

*Please see Appendix (A) for a complete supported model list.

New! PaperCut MF™ Single-Sign-On (SSO) with AIP Apps



New! PaperCut MF™ Single-Sign-On (SSO) with AIP Apps

PaperCut MF with AIP to deliver controlled document scanning and printing with convenience.

PaperCut™

- User authentication (ID card or manual)
- Authorization
- Accounting and tracking
- Scan to home and secure network folder(s)
- Microsoft Exchange integration
- Microsoft SharePoint integration





My Folder Connector

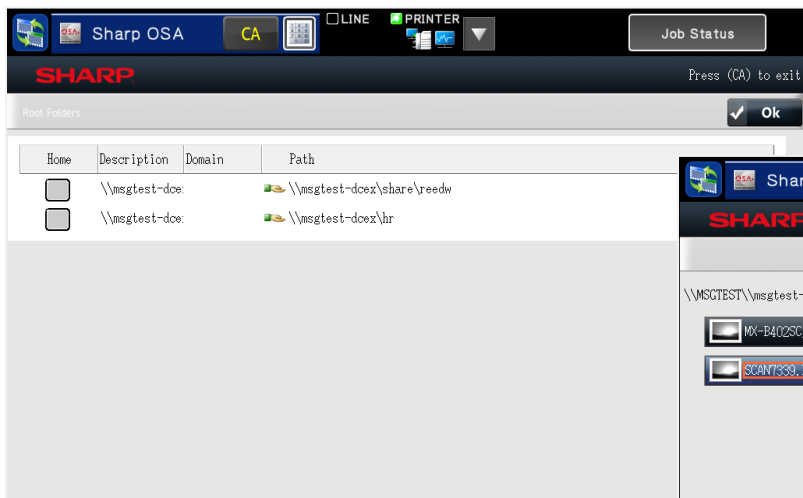
Scan to Secured Folder(s)

Scanning documents become easier with Sharp My Folder Connector. Integrated with customers' Microsoft security policy, My Folder Connector helps IT managers control information security by allowing end customers to scan to their home folder or secured network folders with simplified user interface.

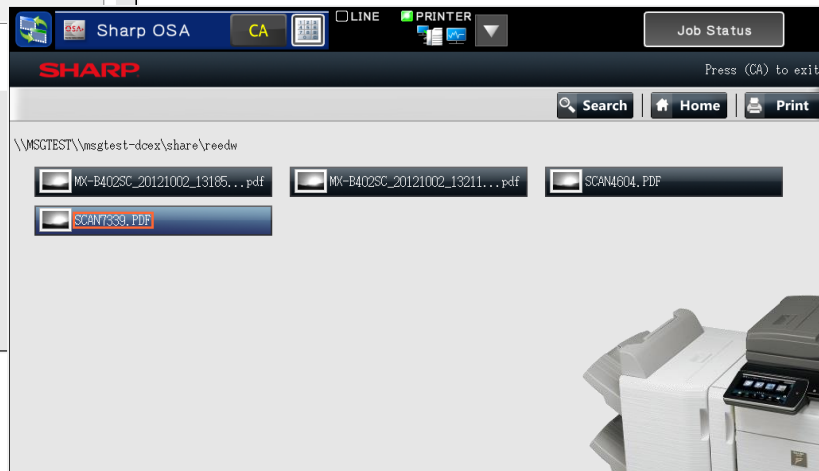
At-A-Glance

- Scan directly to your home folder
- Browse network shares to locate folders
- Browse-to-print supported files
- Make new subfolders on demand and rename files
- Supports active directory login and Windows security policy
- Force end customers to scan only select destinations
- Convenient Single-Sign-On (SSO) with PaperCut MFTM
- Support for Microsoft SQL Express and SQL server®

My Folder Connector MFP User Interface



My Folder Connector Folder Location View



My Folder Connector File Selection for Print





E-mail Connector

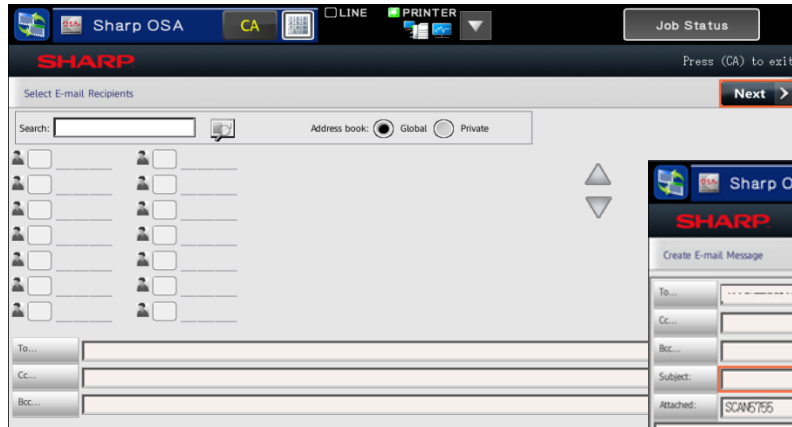
Microsoft® Exchange Integration

Seamless integration with corporate e-mail is becoming more important for efficient communication. Sharp e-mail connector allows end customers to easily access Microsoft® Exchange address book and securely send mission critical documents.

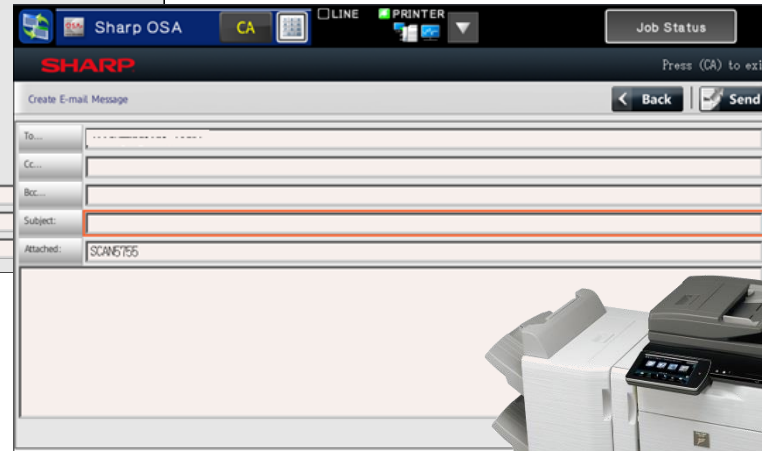
At-A-Glance

- Designed to work with Microsoft® Exchange Server 2003, 2007, and 2010
- Send e-mail messages addressed from logged in user
- Store sent e-mails on the “Sent Items” folder
- Access to Microsoft® Outlook® contacts and global address lists
- Enter addresses to multiple e-mail recipients, subject line and message body text right from the MFP panel
- Supports a global e-mail signature
- Force end customers to scan only to logged in user’s e-mail address
- Convenient Single-Sign-On (SSO) with PaperCut MF™
- Support for Microsoft SQL Express and SQL server®

E-mail Connector MFP User Interface



E-mail Connector Sender Selection



E-mail Connector E-mail Body





Portal Connector

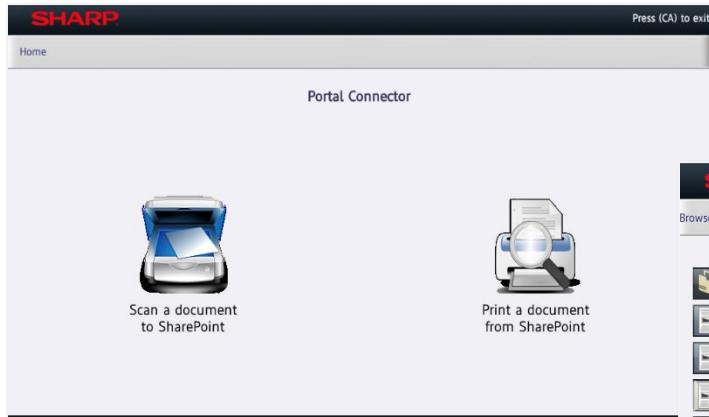
Microsoft® Exchange Integration

Sharp's Portal Connector delivers a straightforward and seamless user experience for printing and scanning with Microsoft® SharePoint®. The application is designed to help your customers' business processes and workflows be more productive and integrated.

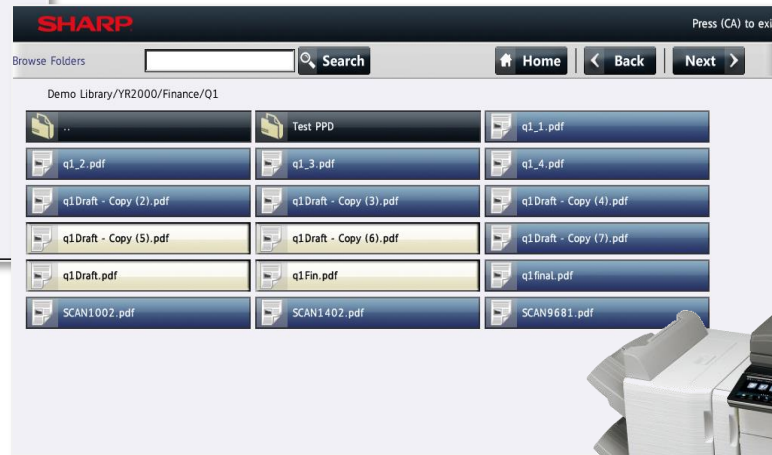
At-A-Glance

- Designed to work with Microsoft SharePoint Server 2010 and 2013
- Print from Microsoft SharePoint
- Scan to Microsoft SharePoint
- Cross firewall support
- Integrated security and flexibility
- Convenient Single-Sign-On with PaperCut MF™
- Support for Microsoft SQL Express and SQL server®

Portal Connector MFP User Interface



Portal Connector Scan and Print Selection



Browsing SharePoint Document Library





MX-SW100 Print Release Software

Print Flexibility, Control and Security, as well as Reduced Waste

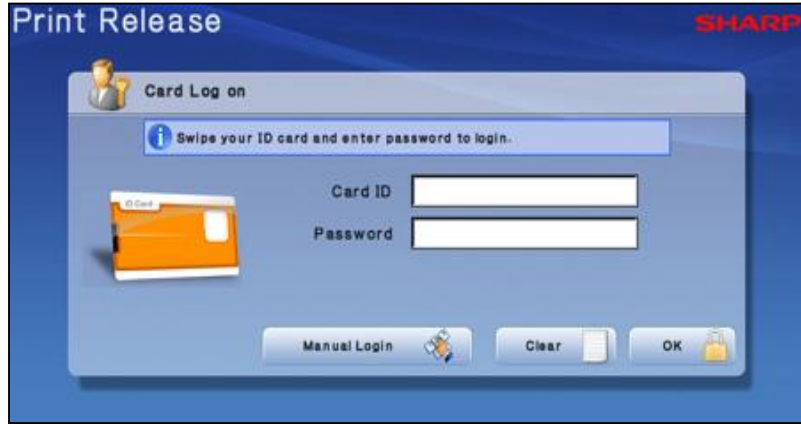
The MX-SW100 Print Release Software, gives IT administrators and end customers a control in how they print. It works by storing documents on a server until required, rather than printing them out immediately.

At-A-Glance

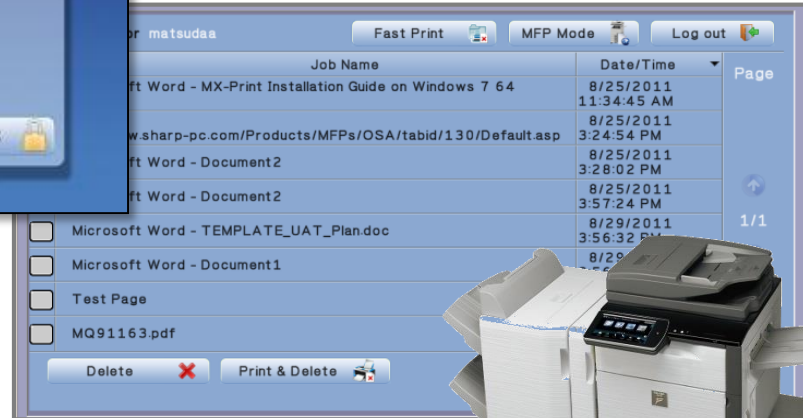
- Centrally managed print release solution for the SMB environment
- Walk-up print release available from any supported Sharp MFPs/printers on the network
- Supports quick and easy login using ID cards on to the device and the application (Both EAM and ACM mode supported*)
- On-demand finishing and print quantity right from the MFP/printer operation panel
- Integrated Active Directory® or local user list
- Reduces waste by virtually eliminating lost jobs and unwanted outputs
- Print job log and basic reporting capability

Applications Communication Module (ACM) = MX-AMX2
External Accounting Module (EAM) = MX-AMX3

MX-SW100 MFP User Interface



MX-SW100 Login Screen



MX-SW100 Print Job List



Appendix

Appendix (A)

My Folder, E-mail, Portal Connector Supported Models

	Sharp OSA Platform Support	Sharp OSA Technology
Mono	MX-M264N/314N/354N	3.5
	MX-B402SC/B402	3.5
	MX-M283N/M363N/M453N/M503N*	3.5/4.1 Lite
	MX-M364N/M464N/M564N	4.5 Lite
	MX-M365N/M465N/M565N	4.5
	MX-M654N/M754N	4.5
	MX-M623N/M753N*	3.5/4.1 Lite
	MX-M904/M1054/M1204	4.5
Color	MX-C301W	4.5 Lite
	MX-C312	3.5
	MX-C402SC	3.5
	MX-2310U/3111U	3.5
	MX-2615N/3115N	4.5 Lite
	MX-2640N/3140N/3640N	4.5
	MX-2610N/3110N/3610N	4.0
	MX-4140N/4141N/5140N/5141N	4.5
	MX-4110N/4111N/5110N/5111N	4.0
	MX-6240N/7040N	4.5
	MX-6500/7500 (Without Fiery®)	4.5

* Requires a special firmware update for Sharp OSA 4.1 Lite Technology

Appendix (B)

MX-SW100 Supported Models

Sharp OSA Platform Support		Sharp OSA Technology Version
Mono	MX-M264N/314N/354N	3.5
	MX-B402SC/B402	3.5
	MX-M283N/M363N/M453N/M503N	3.5/4.1 Lite
	MX-M364N/M464N/M564N	4.5 Lite
	MX-M365N/M465N/M565N	4.5
	MX-M623N/M753N	3.5/4.1 Lite
	MX-M904/M1054/M1204	4.5
Color	MX-2310U/3111U	3.5
	MX-2615N/3115N	4.5 Lite
	MX-2640N/3140N/3640N	4.5
	MX-2610N/3110N/3610N	4.0
	MX-2600N/3100N	3.5
	MX-C312	3.5
	MX-C402SC	3.5
	MX-4140N/4141N/5140N/5141N	4.5
	MX-4110N/4111N/5110N/5111N	4.0
	MX-6240N/7040N	4.5
	MX-6500/7500 (Without Fiery®)	4.5

Design and specifications are subject to change without notice.

Sharp and Sharp OSA are trademarks or registered trademarks of Sharp Corporation. and/or its affiliated companies. Microsoft, Windows, Windows Server, Active Directory, Outlook, SQL Server are trademarks or registered trademarks of Microsoft Corporation. Fiery is a trademark or registered trademark of Electronics For Imaging, Inc. All other company names, products, services and logos used herein are trademarks or registered trademarks of their respective owners.

SHARP ELECTRONICS CORPORATION

Sharp Plaza, Mahwah, NJ 07495-1163

1-800-BE-SHARP • www.sharpusa.com

Document Number 15009

©2015 Sharp Electronics Corporation. All rights reserved.

SHARP[®]

 **Alliance**
ACT. ACHIEVE. ASPIRE.