

Ordering Information

Product Name	50 Tests - i6000/manual	50 Tests - Xmatrx
Acid-Fast Bacteria (AFB) Blue Stain	N/A	SS025-50X
Acid-Fast Bacteria (AFB) Green Stain	N/A	SS059-50X
Alcian Blue/PAS Stain	SS020	SS026-50X
Alcian Blue pH 2.5 Stain	SS012	SS027-50X
Alizarin Red Stain (manual use only)	SS052-50K	N/A
Amyloid (Congo Red) Stain	SS003	SS028-50X
Azure A Stain	SS038	SS038-50X
Colloidal Iron Stain	SS054	SS054-50X
Elastic Stain	N/A	SS029-50X
Giemsa Stain	SS016	SS049-50X
Gomori's Trichrome Blue Stain	SS033	SS033-50X
Gomori's Trichrome Green Stain	SS034	SS034-50X
Gram Stain	SS015	SS037-50X
Grocott's Methenamine Silver (GMS) Stain	SS017	SS042-50X
Iron Stain	SS010	SS030-50X
Jones' Basement Membrane Stain	N/A	SS058-50X
Masson's Trichrome Stain	SS008	SS035-50X
Mucicarmine Stain	SS006	SS036-50X
Oil Red O Stain	SS021	SS043-50X
Periodic Acid-Schiff (PAS) Diastase Stain	SS001	SS039-50X
Periodic Acid-Schiff (PAS) for Fungi Stain	SS022	SS053-50X
Periodic Acid-Schiff (PAS) Stain (without Diastase)	SS002	SS032-50X
Renal Masson's Trichrome Stain	SS050	SS050-50X
Reticulin/No Counterstain	SS046	SS046-50X
Reticulin/Nuclear Fast Red Stain	SS011	SS047-50X
Safranin O Stain	SS040	SS040-50X
Sudan Black B Stain	SS019	SS041-50X
Toluidine Blue Stain	SS057	SS057-50X
Van Gieson Stain	SS044	SS044-50X
von Kossa Stain (manual use only)	SS045-50K	N/A

* IVD Products: Unless specified otherwise, all Special Stains listed in this section are for In Vitro Diagnostics Use.



Xmatrx[®] ELITE

Elegance on the Glass Slide...
...from Microtome to Microscope

Xmatrx[®] ELITE assures accurate reagent dispensing using liquid level sensor, even distribution of reagents on the specimen and up to 90% reduced reagent consumption via coverslip micro-chamber, precise temperature control on each slide by eXACT™ and eliminates cross contamination through the use of disposable pipette tips.

Xmatrx[®] ELITE maximizes the testing capacity, minimizes hands-on time, reduces errors and produces consistent and accurate results. This under-scores our commitment to provide a system to meet the needs of molecular pathology laboratory of today, tomorrow and beyond...

Contact Information:

USA: 49026 Milmont Drive, Fremont, CA 94538, USA

T: +1-800-421-4149
F: +1-510-824-1490

India: SEZ Unit, Plot No.4, APIIC SEZ for Aerospace & Precision Engineering Adibatla, R. R. Dist. - 501510, Telangana State, India

T: +91-40-27185500
F: +91-40-27185511/21

China: Unit 511B, 5F Front Hall, Shanghai Exhibition Center No.1000 Middle Yan An Road, Shanghai 200041, PRC, China

T: +86-21-2220-6860
F: +86-21-2220-6679

Italy: Via Savoldini, n.73, 24057, Martinengo, Bergamo, Italy

T: +39-036-398-6463

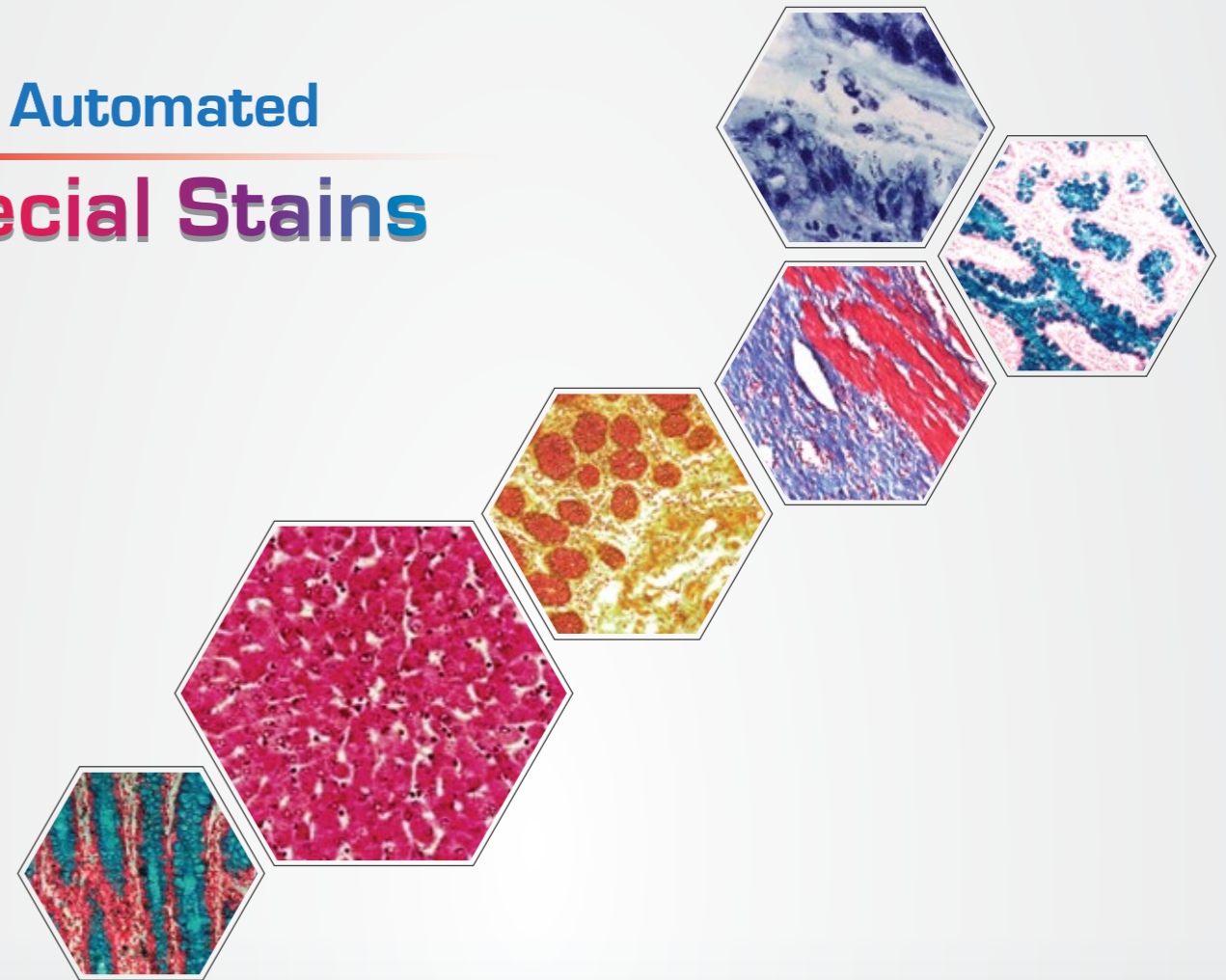


www.biogenex.com
e-mail: customer.service@biogenex.com



NEW

Fully Automated Special Stains



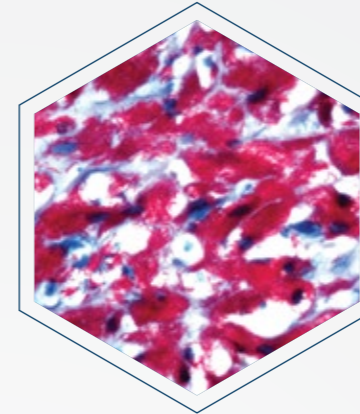
30 Stains
GMS, Trichrome
Reticulin and...

Xmatrx[®] ELITE

Elegance on the Glass Slide...
...from Microtome to Microscope



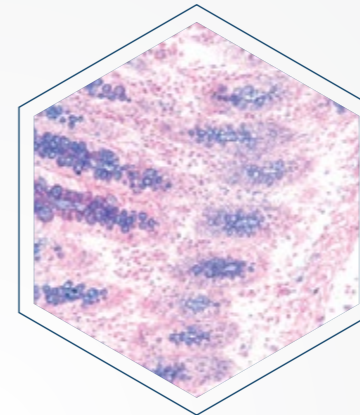
© 2016 BioGenex Laboratories, Inc. All Rights Reserved. Doc. No. 8074DB4.0 Rev. D



Acid-Fast Bacteria (AFB) Blue Stain

Acid-fast stain is used for demonstration of Mycobacterium tuberculosis in tissue sections and smears. Acid-fast bacilli (Mycobacteria) stain red while background & non Acid-fast bacteria stain blue.

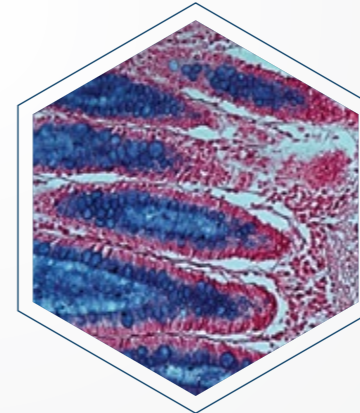
Catalog No.	: SS025 (Xmatrix)
Acid-fast bacilli	: Red
Non Acid-fast bacteria	: Blue
Positive Control	: AFB infected tissue & Smears



Alcian Blue /PAS Stain

Alcian Blue/PAS stain utilizes the properties of both, the PAS and Alcian Blue methods. Acidic mucosubstances are stained with the Alcian Blue technique and neutral mucosubstances are stained by the PAS stain.

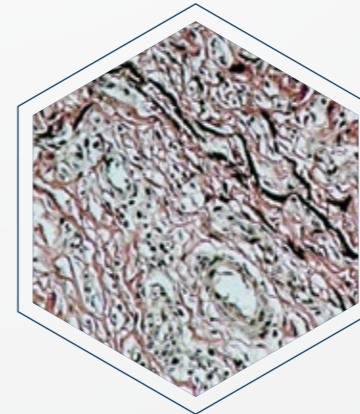
Catalog No.	: SS026-50X (Xmatrix), SS020 (i6000)
Acidic mucins	: Blue
Neutral mucins	: Magenta
Mixtures of above	: Blue/Purple
Nuclei	: Deep blue
Positive Control	: Intestine



Alcian Blue pH 2.5 Stain

Alcian Blue pH 2.5 stains both sulfated and carboxylated acid mucopolysaccharides as well as sulfated and carboxylated sialomucins (glycoproteins) to blue color. Nuclear fast red counter stains the nuclei in red color.

Catalog No.	: SS027-50X (Xmatrix), SS012 (i6000)
Acidic sulfated mucosubstances	: Blue
Nuclei	: Pink to Red
Cytoplasm	: Pale Pink
Positive Controls	: Small Intestine, Appendix, or Colon



Elastic Stain

Elastic staining procedure can demonstrate elastic fibers which stain dark blue to black, whereas nuclei, collagen and other tissue elements stain blue, red and yellow, respectively.

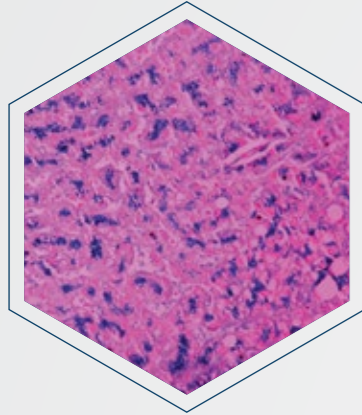
Catalog No.	: SS029-50X (Xmatrix)
Elastic fibers	: Blue-Black to Black
Nuclei	: Blue to Black
Collagen	: Red
Other tissue elements	: Yellow
Positive Controls	: Skin

Three Simple Steps:



Key Features:

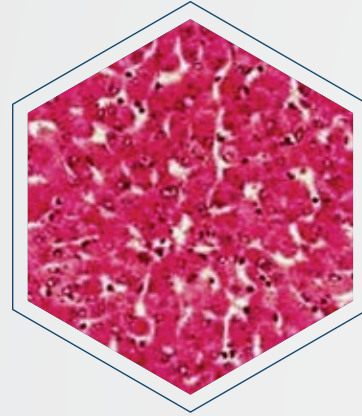
- Fully Automated – baking through final coverslip
- High capacity & High Throughput system
- Fast turnaround
- Broadest menu available from any where - over 30 SS
- Crisp, intense, reliable and reproducible stains
- Ability to optimize protocols for customized intensity
- Eco-friendly - up to 75% reduced
 - Reagent consumption
 - Waste generation
- Easy inventory management with RFID driven system
- Reports for inventory management and regulatory compliance



Iron Stain

In Iron staining method ferric iron, loosely bound in protein complexes, reacts with acidic potassium ferrocyanide producing a blue color.

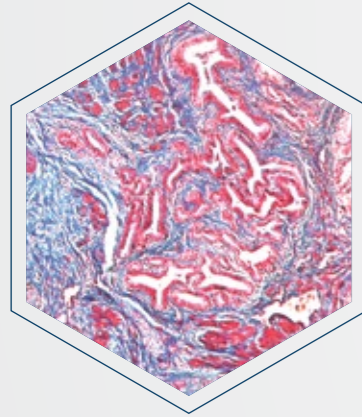
Catalog No.	: SS030-50X (Xmatrix), SS010 (i6000)
Iron (ferric form)	: Bright blue
Nuclei	: Red
Cytoplasm	: Pink
Positive Controls	: Liver & Spleen



Periodic Acid-Schiff (PAS) Stain

PAS staining is mainly used for staining structures containing a high proportion of carbohydrate macromolecules such as glycogen, glycoprotein, & proteoglycans typically found in connective tissues, mucus, glycocalyx, and basal laminae.

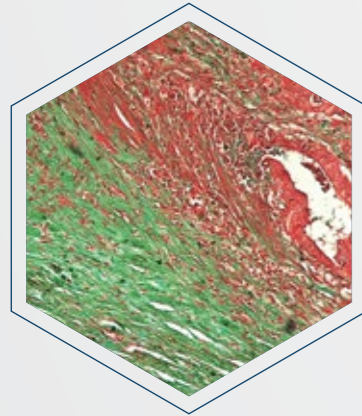
Catalog No.	: SS032-50X (Xmatrix), SS002 (i6000)
Glycogen & Mucin	: Red/Purple
Background	: Blue
Positive Controls	: Liver, Cardiac and Skeletal Muscle



Gomori's Trichrome Blue Stain

Gomori's trichrome stain is useful in the study of diseases of connective tissue and muscles characterized by fibrotic and dystrophic changes, and to differentiate between collagen and smooth muscles.

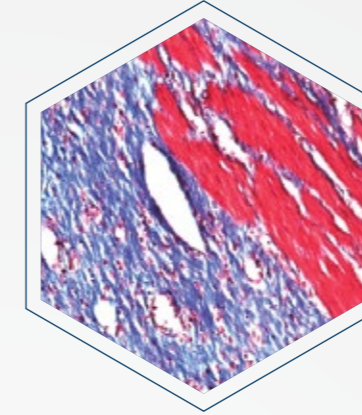
Catalog No.	: SS033-50X (Xmatrix), SS033 (i6000)
Muscle fibres	: Red
Collagen	: Blue
Nuclei	: Blue Black
Positive Controls	: Uterus, Striated Muscle, Small Intestine or any other Connective tissue



Gomori's Trichrome Green Stain

Gomori's trichrome stain is useful in the study of diseases of connective tissue and muscle characterized by fibrotic and dystrophic changes and to differentiate between collagen and smooth muscles.

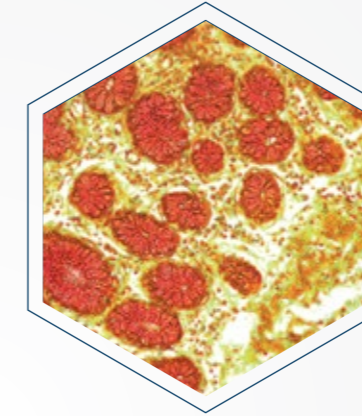
Catalog No.	: SS034-50X (Xmatrix), SS034 (i6000)
Muscle fibres	: Red
Collagen	: Green
Nuclei	: Blue black
Positive Controls	: Uterus, Striated Muscle, Small Intestine or any other Connective tissue



Masson's Trichrome Stain

Masson's Trichrome, a mixture of three stains, is useful in the study of diseases of connective tissue and muscle characterized by fibrotic and dystrophic changes. It also differentiates between collagen and smooth muscles.

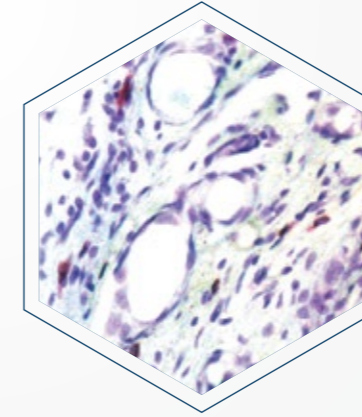
Catalog No.	: SS035-50X (Xmatrix), SS008 (i6000)
Collagen	: Blue
Nuclei	: Black
Muscle, Cytoplasm, Keratin	: Red
Positive Controls	: Skin, Lung, Stomach & Intestine



Mucicarmine Stain

Mucicarmine preferentially stains mucin and is used to identify primary tumor sites, distinguishing mucin-negative undifferentiated squamous cell lesions from mucinpositive adenocarcinomas.

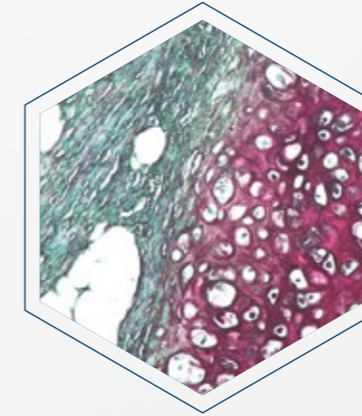
Catalog No.	: SS037-50X (Xmatrix), SS006 (i6000)
Mucins	: Deep Rose
Nuclei	: Black
Other Tissue elements	: Yellow
Positive Controls	: Colon



Azure A Stain

Mast cells normally present in the connective tissue of all organs are increased in many pathological conditions. Mast cell granules which are refractile and not readily identified in H&E stained sections are well demonstrated by Azure A method.

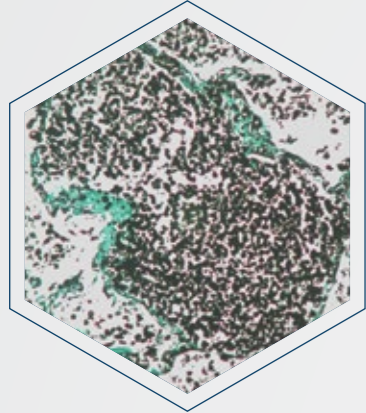
Catalog No.	: SS038-50X (Xmatrix), SS038 (i6000)
Mast cell granules	: Purple
Nuclei	: Blue
Background	: Pale blue
Positive Controls	: Skin



Safranin O Stain

Safranin O staining method is used for the detection of cartilage, mucin and mast cell granules on FFPE and frozen sections. The cartilage and mucin will be stained orange to red, and the nuclei will be stained black.

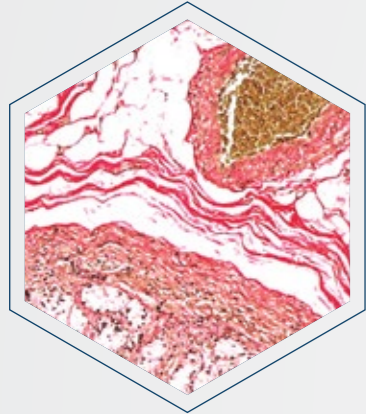
Catalog No.	: SS040-50X (Xmatrix), SS040 (i6000)
Nuclei	: Black
Cytoplasm	: Grey Green
Cartilage, Mucin & Mast cell granules	: Orange to Red
Positive Controls	: Cartilage



Grocott's Methenamine Silver (GMS) Stain

GMS staining is specific for demonstrating fungi in tissue sections. Fungi stain grey to black with a light green background.

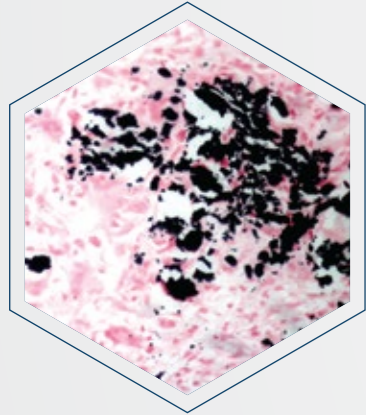
Catalog No.	: SS042-50X (Xmatrx), SS017 (i6000)
Fungi, <i>P. carinii</i> ,	
Histoplasma spp	: Black
Mucin	: Dark grey
Background	: Pale green
Positive Controls	: Fungi in tissue sections



Van Gieson Stain

Van Gieson Stain is used to differentiate between collagen and smooth muscles in tumors and to demonstrate the increase of collagen in diseases.

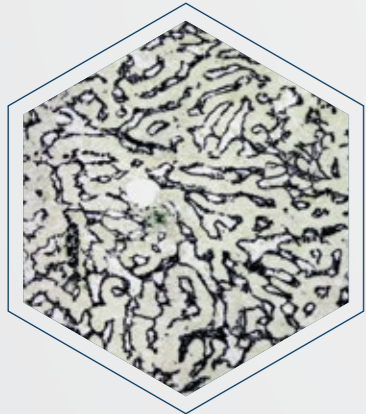
Catalog No.	: SS044-50X (Xmatrx), SS044 (i6000)
Collagen	: Bright red
Nuclei	: Blue black
Cytoplasm, Muscle,	
Fibrin & RBC's	: Yellow
Positive Controls	: Stomach



von Kossa Stain

Abnormal deposits of calcium may be found in any area of the body. von Kossa staining is used to demonstrate deposits of calcium.

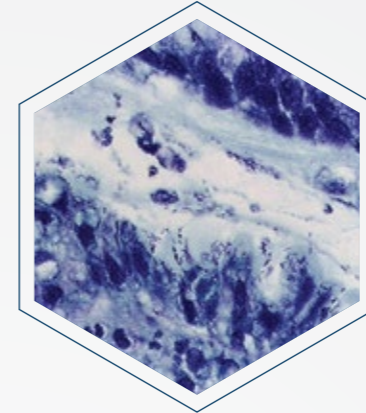
Catalog No.	: SS045-50K (manual use only)
Nuclei	: Red
Cytoplasm	: Pink
Calcium salts	: Black or brown black
Positive Controls	: Tissue containing known positive calcium deposits, or undecalcified bone



Reticulin/No Counterstain Stain

Reticulin staining is used to visualize reticular fiber and used extensively in liver. Reticulin staining may be used for the differential diagnosis of tumors such as carcinomas, sarcomas and lymphomas.

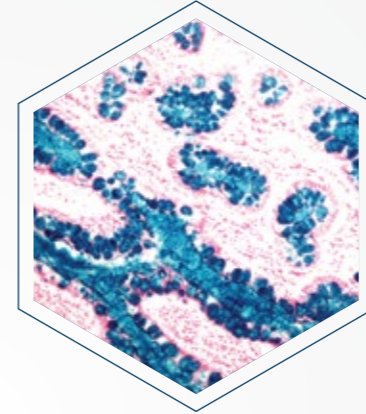
Catalog No.	: SS046-50X (Xmatrx), SS046 (i6000)
Reticulin fibers	: Black
Nuclei	: Black
Positive Controls	: Liver & Spleen



Giemsa Stain

Giemsa staining is useful for detecting *Helicobacter pylori*, the causative agent of most stomach and duodenal ulcers.

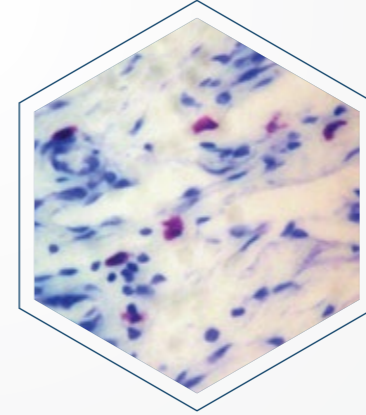
Catalog No.	: SS049-50X (Xmatrx), SS016 (i6000)
Helicobacter pylori	
& Nuclei stain	: Dark blue
Cytoplasm	: Pink
Positive Controls	: Helicobacter pylori in tissue sections



Colloidal Iron Stain

Colloidal Iron stain is used to identify carboxylated, sulfated mucopolysaccharides and glycoprotein mucins which at low pH absorb colloidal ferric ions present in the tissues. The Prussian blue reaction demonstrates iron bound to the tissue.

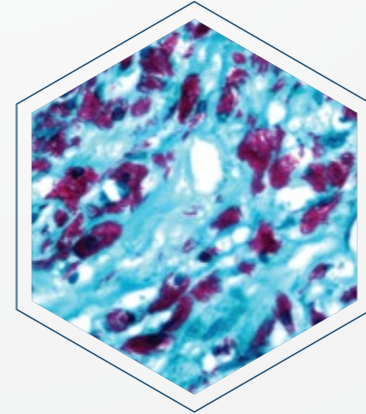
Catalog No.	: SS054-50X (Xmatrx), SS054 (i6000)
Acid mucins	: Deep blue
Nuclei	: Pink-Red
Cytoplasm	: Pink
Positive Control	: Small Intestine Tissue



Toluidine Blue

Mast cells normally present in the connective tissue of all organs are increased in many pathological conditions. Mast cell granules which are refractile and not readily identified in H&E stained sections are well demonstrated by Toluidine blue staining method.

Catalog No.	: SS057-50X (Xmatrx), SS057 (i6000)
Mast cell granules sulphated	
& carboxylated mucins	: Purple
Nuclei	: Blue
Background	: Pale Blue
Positive Control	: Skin



Acid-Fast Bacteria (AFB) Green Stain

Acid-fast stain is used for demonstration of *Mycobacterium tuberculosis* in tissue sections and smears. Acid-fast bacilli [Mycobacteria] stain red while background & non Acid-fast bacteria stain green.

Catalog No.	: SS059-50X (Xmatrx)
Acid-fast bacilli	: Red
Non Acid-fast bacteria	: Green
Positive Control	: Mycobacterium infected tissues