



FARMHOUSE

LVXSM

Preferred
HOTELS & RESORTS

WHY SONOMA?

Sonoma is home to more than 400 wineries.

Just 30 minutes from the Napa Valley.

San Francisco and Oakland Airports are 60 miles from Farmhouse - shuttles and transfers available.

Santa Rosa Airport (10 minutes from Farmhouse) has direct flights from Los Angeles, San Diego, Orange County, Portland and Seattle.

Diversity - redwoods, coast, vineyards, farms, small towns, shopping.

WHY FARMHOUSE INN?

We offer 25 luxurious rooms and suites

Unrivalled level of authentic service

No resort fees, complimentary parking and property-wide WiFi

Michelin-starred dining on-site Thursday through Monday

New 3000 sq. ft. spa with a farm-to-table menu

Complimentary VIP access to 12 of Sonoma's best wineries

Unique local immersion packages

ROOM CATEGORIES AND SIZE

King Standard (entry level): 350 sq feet

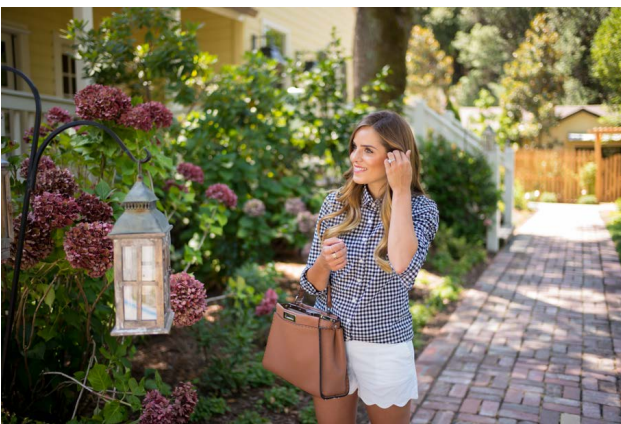
King Suite (similar to Standard but bigger): 600 sq feet

King Deluxe (new rooms): 650 sq feet

King Luxury (largest and most private): 850 sq feet



#8 ON TRAVEL AND LEISURE'S WORLD'S BEST LIST!



Rack Rates Start At \$695 USD

ROOM AMENITIES

Gas or wood burning fireplaces

Private outdoor spaces

In-room Sommelier Program

Saunas or steam showers, Jetted Tubs



FARMHOUSE

Siblings Catherine and Joe Bartolomei and their families call Sonoma their home, as did the 4 generations that came before them. As 5th generation Russian River Valley farmers, their vision and leadership have transformed Farmhouse Inn into the most luxurious boutique hotel in wine country. The Farmhouse Inn is at the center of the Russian River Valley, surrounded by vineyards, redwoods and is minutes from the coast.

PACKAGES AND PARTNERSHIPS

BEST OF BOTH VALLEYS: FARMHOUSE INN AND MEADOWOOD NAPA VALLEY

Meadowood Napa Valley and the Farmhouse Inn are delighted to present the Best of Both Valleys - this package allows wine country visitors to explore Napa and Sonoma while staying at two of wine country's most iconic luxury hotels. The package includes breakfast each morning, spa, welcome wine and a custom wine country itinerary.

For more details please visit <http://www.farmhouseinn.com/hotel/specials-packages/best-of-both-valleys>

THE CITY AND SONOMA: A TOWN AND COUNTRY GETAWAY

The St. Regis San Francisco and the Farmhouse Inn have partnered up to offer a Northern California dream getaway package - 2 nights at each property, breakfast, spa and much more all in one package!

EXPERIENTIAL PACKAGES

Sommelier-led Wine Tours: Starting at \$1500

Work with our Estate Wine Director to create a wine tour customized for your clients. Our Wine Director will join your clients for a day of wine tasting in beautiful Sonoma. Package also includes lunch and luxury car transportation.

A Day in the Life of a Michelin-starred Chef: Starting at \$3000

Ever wonder how a Michelin-starred chef spends his day? This package will allow your clients to find out, as they spend the day visiting farms to pick out produce, join him for lunch at his favorite spot, and come back to Farmhouse to help him prepare a stunning dinner.

Private Winery Dinner: Starting at \$1500

Wine caves, vineyards, stunning views and vistas - the options for a fantastic private dinner at a winery are truly endless. Let us plan a memorable experience with our Estate Chef that is sure to delight your clients.

Have clients interested in a California vacation? Why not make it a road trip? <https://preferredhotels.com/offers/california-road-trip>

